

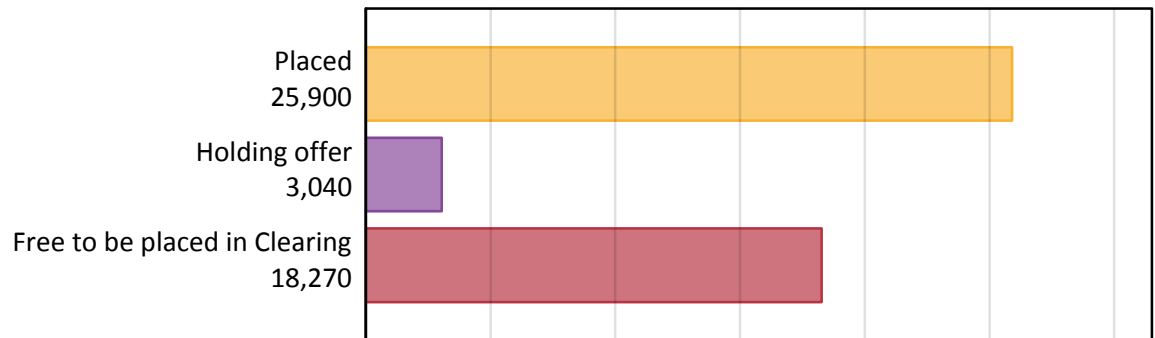
# Daily Clearing Analysis: Overview

**B7 Nursing analysis at 00:05 on Friday 1 September 2017 (15 days after A level results day)**

## AB.1 Placed applicants to nursing from all domiciles, 2017 cycle

Applicant type	Status	2017
Main scheme	Placed (Clearing)	1,490
	Placed (Adjustment)	20
	Placed (Firm)	22,430
	Placed (Insurance)	510
	Placed (Other)	1,090
	Holding offer	3,040
	Free to be placed in Clearing	18,270
Direct to Clearing	Placed (Direct to Clearing)	380
	Other (Direct to Clearing)	340
All applicants	Placed	25,900

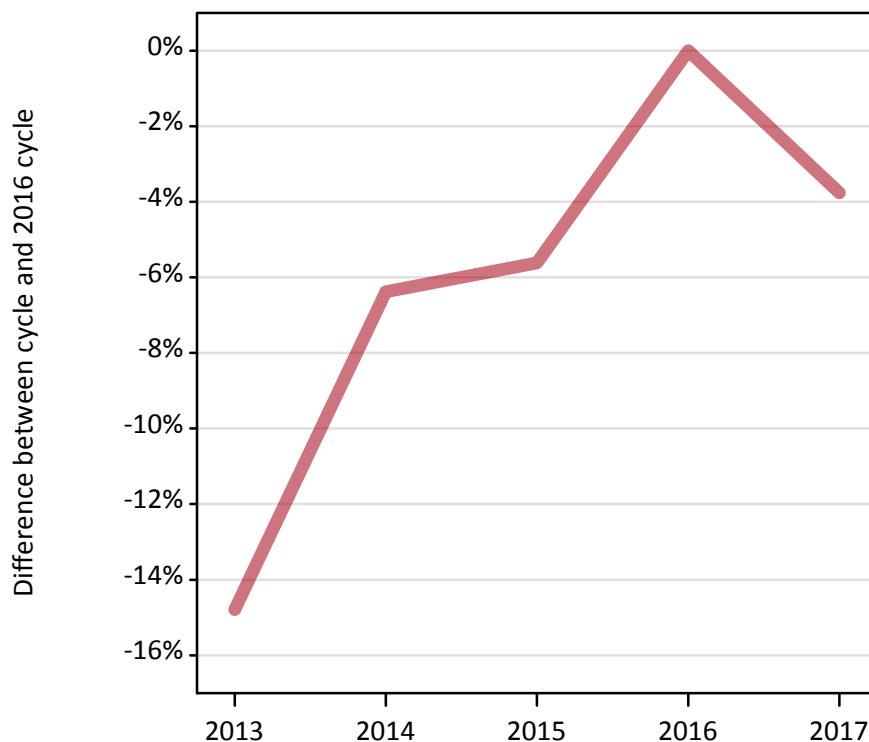
## AB.2 Summary of nursing applicants who are placed, holding offers or free to be placed in Clearing ( all domiciles )



### AB.3 Placed applicants to nursing from all domiciles: 15 days after A level results day

Placed applicants to nursing: difference between cycle and 2016 cycle

Placed



### AB.4 Placed applicants to nursing from all domiciles: 15 days after A level results day

Placed applicants to nursing: applicants at 15 days after A level results day

Applicant type	Status	2013	2014	2015	2016	2017
All applicants	Placed	22,940	25,200	25,400	26,920	25,900

### AB.5 Placed applicants to nursing from all domiciles: 15 days after A level results day

Placed applicants to nursing: difference between cycle and 2016 cycle

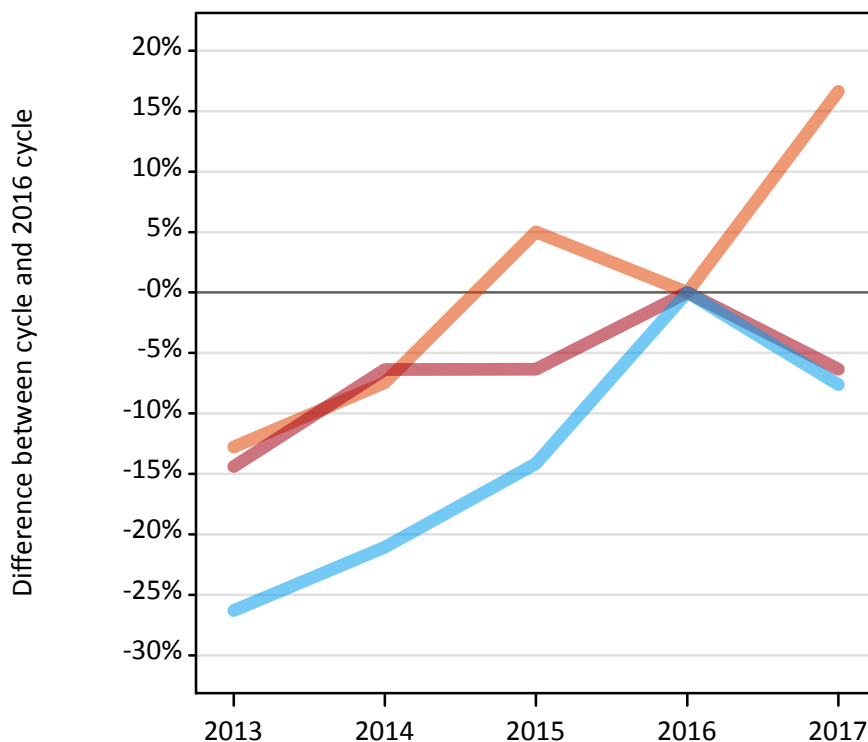
Applicant type	Status	2013	2014	2015	2016	2017
All applicants	Placed	-15%	-6%	-6%	0%	-4%

Note: Percentage changes are not plotted for lines with, on average, fewer than 30 applicants per year. As a result, lines for some, or all, of the states may be missing.

**AB.6 Placed main scheme applicants to nursing from all domiciles: 15 days after A level results day**

Selected placed routes: difference between cycle and 2016 cycle

- Placed (Clearing)
- Placed (Firm)
- Placed (Insurance)



**AB.7 Placed main scheme applicants to nursing from all domiciles: 15 days after A level results day**

All Main scheme placed routes (excluding Adjustment): applicants at 15 days after A level results day

Applicant type	Status	2013	2014	2015	2016	2017
Main scheme	Placed (Clearing)	1,110	1,180	1,340	1,280	1,490
	Placed (Firm)	20,500	22,420	22,420	23,940	22,430
	Placed (Insurance)	410	440	470	550	510
	Placed (Other)	710	1,020	950	920	1,090

**AB.8 Placed main scheme applicants to nursing from all domiciles: 15 days after A level results day**

Selected placed routes: difference between cycle and 2016 cycle

Applicant type	Status	2013	2014	2015	2016	2017
Main scheme	Placed (Clearing)	-13%	-7%	5%	0%	17%
	Placed (Firm)	-14%	-6%	-6%	0%	-6%
	Placed (Insurance)	-26%	-21%	-14%	0%	-8%

Note: Percentage changes are not plotted for lines with, on average, fewer than 30 applicants per year. As a result, lines for some, or all, of the states may be missing.

**AB.9 Main scheme applicants placed to nursing through adjustment: 15 days after A level results day**  
Placed through adjustment: difference between cycle and 2016 cycle

**[This chart is not part of this report]**

**AB.10 Main scheme applicants placed to nursing through adjustment: 15 days after A level results day**  
Placed through adjustment: applicants at 15 days after A level results day

Applicant type	Status	2013	2014	2015	2016	2017
Main scheme	Placed (Adjustment)	10	10	10	0	20

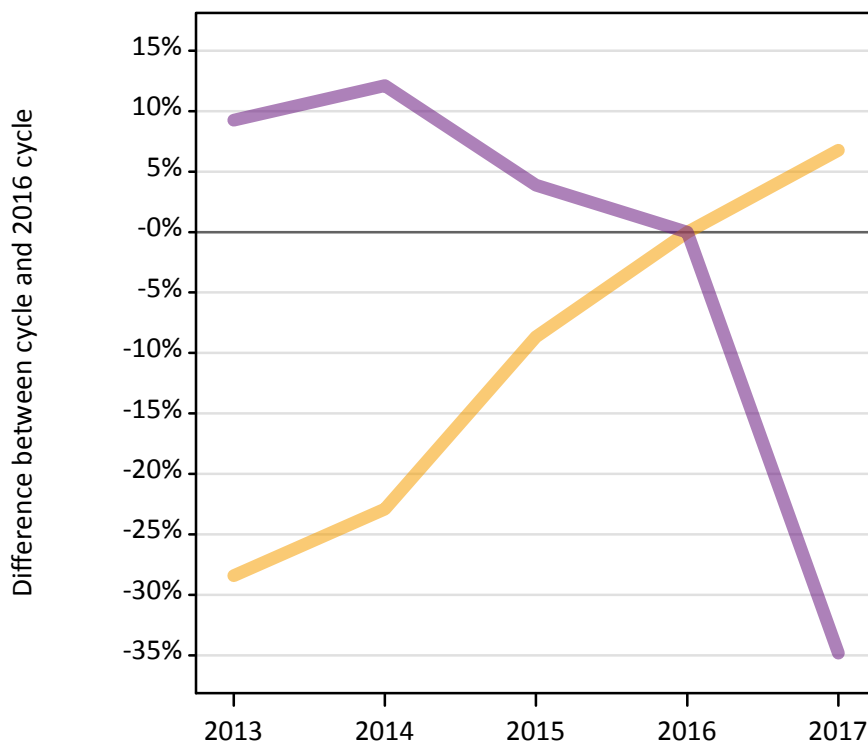
**AB.11 Main scheme applicants placed to nursing through adjustment: 15 days after A level results day**  
Placed through adjustment: difference between cycle and 2016 cycle

**[This table is not part of this report]**

**AB.12 Main scheme applicants to nursing not currently placed from all domiciles: 15 days after A level results day**

Applicants in unplaced states: difference between cycle and 2016 cycle

— Holding offer  
— Free to be placed in Clearing



**AB.13 Main scheme applicants to nursing not currently placed from all domiciles: 15 days after A level results day**

Applicants in unplaced states: applicants at 15 days after A level results day

Applicant type	Status	2013	2014	2015	2016	2017
Main scheme	Holding offer	2,040	2,200	2,600	2,850	3,040
	Free to be placed in Clearing	30,620	31,420	29,110	28,030	18,270

**AB.14 Main scheme applicants to nursing not currently placed from all domiciles: 15 days after A level results day**

Applicants in unplaced states: difference between cycle and 2016 cycle

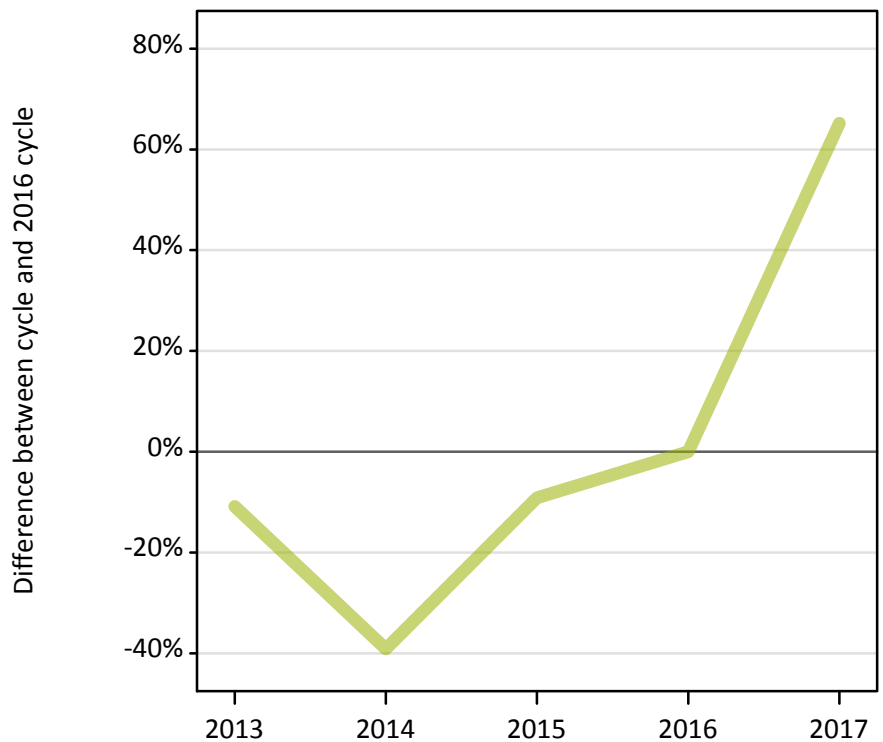
Applicant type	Status	2013	2014	2015	2016	2017
Main scheme	Holding offer	-28%	-23%	-9%	0%	7%
	Free to be placed in Clearing	9%	12%	4%	0%	-35%

Note: Percentage changes are not plotted for lines with, on average, fewer than 30 applicants per year. As a result, lines for some, or all, of the states may be missing.

**AB.15 Direct to Clearing applicants from all domiciles: 15 days after A level results day**

Placed (Direct to Clearing): difference between cycle and 2016 cycle

Placed (Direct to Clearing)



**AB.16 Direct to Clearing applicants from all domiciles: 15 days after A level results day**

Direct to Clearing 15 days after A level results day

Applicant type	Status	2013	2014	2015	2016	2017
Direct to Clearing	Placed (Direct to Clearing)	210	140	210	230	380
	Other (Direct to Clearing)	170	130	240	220	340

**AB.17 Direct to Clearing applicants from all domiciles: 15 days after A level results day**

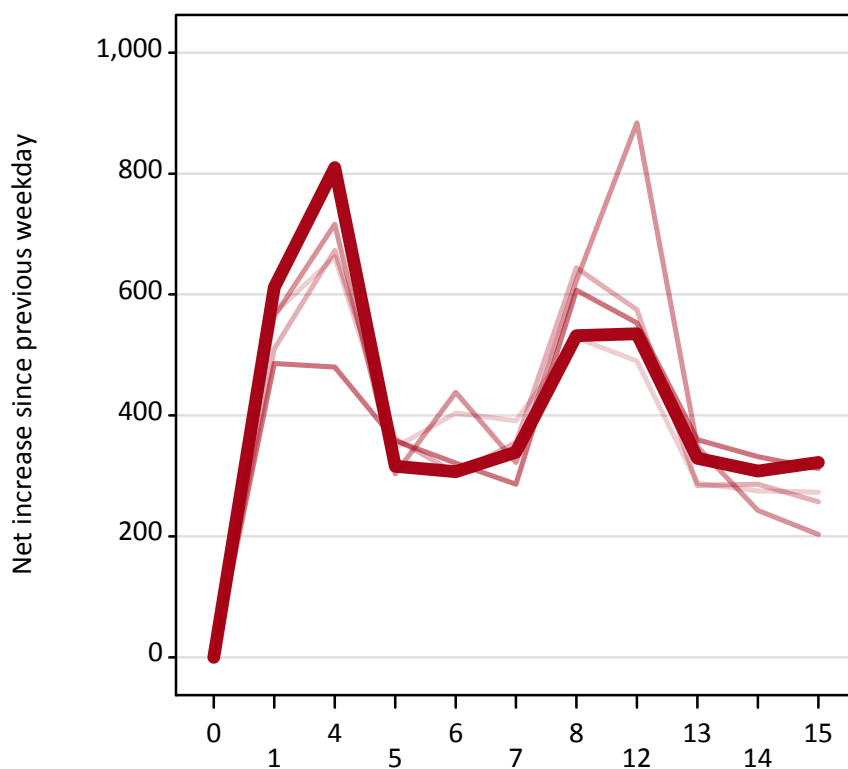
Placed (Direct to Clearing): difference between cycle and 2016 cycle

Applicant type	Status	2013	2014	2015	2016	2017
Direct to Clearing	Placed (Direct to Clearing)	-11%	-39%	-9%	0%	65%

Note: Percentage changes are not plotted for lines with, on average, fewer than 30 applicants per year. As a result, lines for some, or all, of the states may be missing.

**AB.18 All Placed: Daily net change (from all domiciles)**

Net increase since previous weekday (2017 cycle up to 15 days after A level results day)



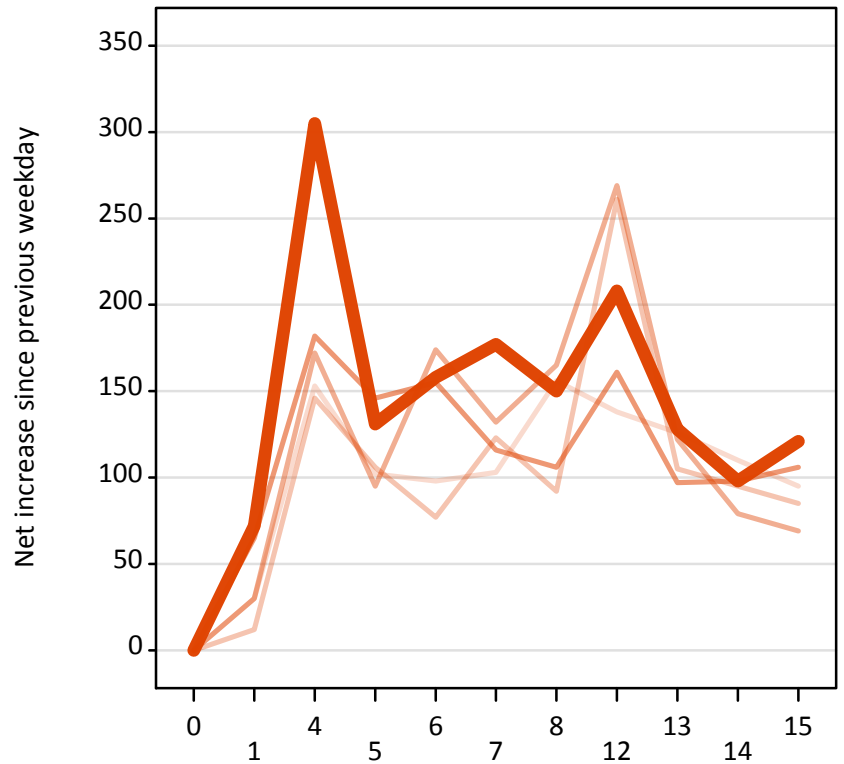
**AB.19 All Placed: Daily net change (from all domiciles)**

Net increase since previous weekday (2017 cycle up to 15 days after A level results day)

Applicant status, days since A level results day		2013	2014	2015	2016	2017
All Placed	0	0	0	0	0	0
	1	570	510	560	490	610
	4	660	670	720	480	810
	5	350	360	300	360	320
	6	400	310	440	320	310
	7	390	360	320	290	340
	8	530	640	620	610	530
	12	490	580	880	550	540
	13	290	280	350	360	330
	14	280	290	240	330	310
	15	270	260	200	310	320

**AB.20 Placed through Clearing only: Daily net change (from all domiciles)**

Net increase since previous weekday (2017 cycle up to 15 days after A level results day)



**AB.21 Placed through Clearing only: Daily net change (from all domiciles)**

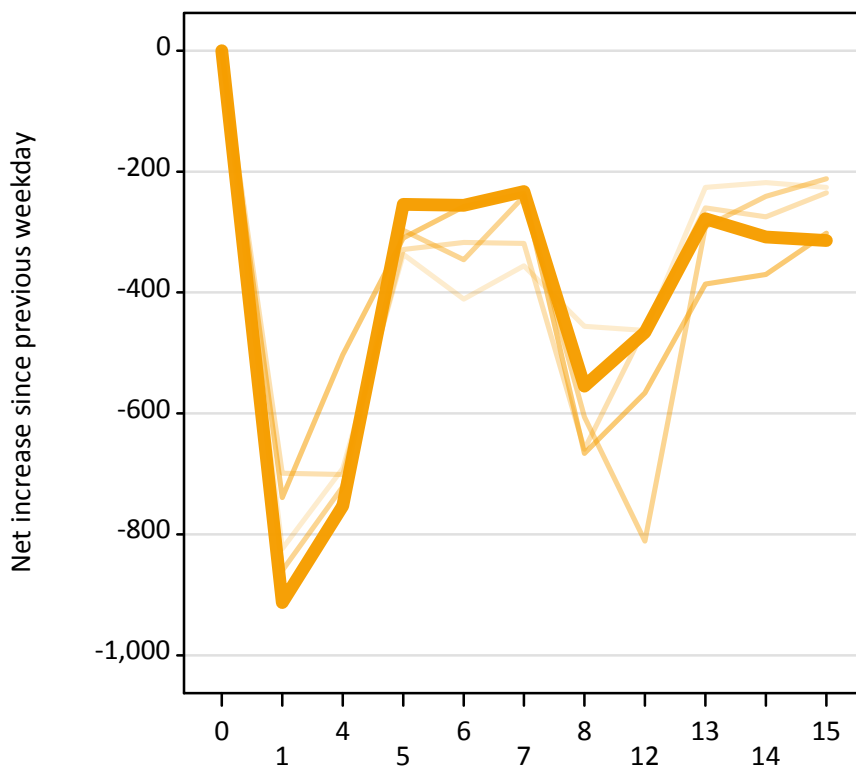
Net increase since previous weekday (2017 cycle up to 15 days after A level results day)

Applicant status, days since A level results day		2013	2014	2015	2016	2017
Placed through Clearing only	0	0	0	0	0	0
	1	30	10	30	70	70
	4	150	150	170	180	310
	5	100	110	100	150	130
	6	100	80	170	160	160
	7	100	120	130	120	180
	8	160	90	170	110	150
	12	140	260	270	160	210
	13	130	110	120	100	130
	14	110	100	80	100	100
	15	100	90	70	110	120



### AB.22 Holding Offer: Daily net change (from all domiciles)

Net increase since previous weekday (2017 cycle up to 15 days after A level results day)



### AB.23 Holding Offer: Daily net change (from all domiciles)

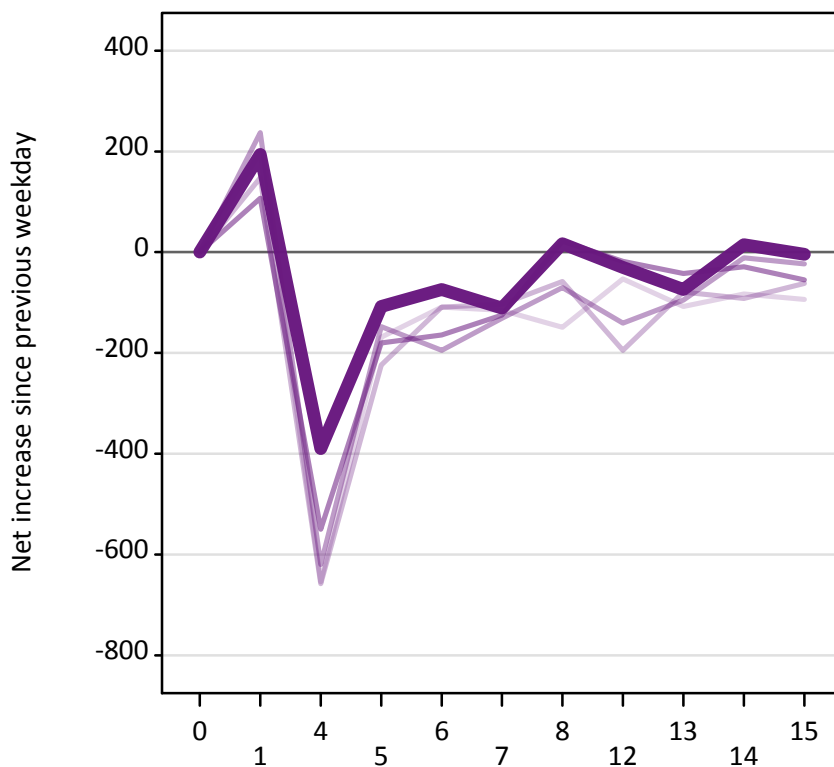
Net increase since previous weekday (2017 cycle up to 15 days after A level results day)

Applicant status, days since A level results day		2013	2014	2015	2016	2017
Holding Offer	0	0	0	0	0	0
	1	-820	-700	-860	-740	-910
	4	-690	-700	-720	-500	-750
	5	-340	-330	-300	-310	-250
	6	-410	-320	-350	-260	-260
	7	-360	-320	-240	-240	-230
	8	-460	-660	-610	-670	-560
	12	-460	-460	-810	-570	-470
	13	-230	-260	-290	-390	-280
	14	-220	-280	-240	-370	-310
	15	-230	-240	-210	-300	-310

**AB.24 Free to be placed in Clearing: Daily net change (from all domiciles)**

Net increase since previous weekday (2017 cycle up to 15 days after A level results day)

- 2013
- 2014
- 2015
- 2016
- 2017



**AB.25 Free to be placed in Clearing: Daily net change (from all domiciles)**

Net increase since previous weekday (2017 cycle up to 15 days after A level results day)

Applicant status, days since A level results day		2013	2014	2015	2016	2017
Free to be placed in Clearing	0	0	0	0	0	0
	1	200	150	240	110	190
	4	-650	-660	-620	-550	-390
	5	-170	-220	-150	-180	-110
	6	-110	-110	-200	-160	-70
	7	-120	-100	-130	-130	-110
	8	-150	-60	-70	20	20
	12	-50	-200	-140	-20	-30
	13	-110	-80	-100	-40	-70
	14	-80	-90	-10	-30	20
	15	-90	-60	-20	-60	0