

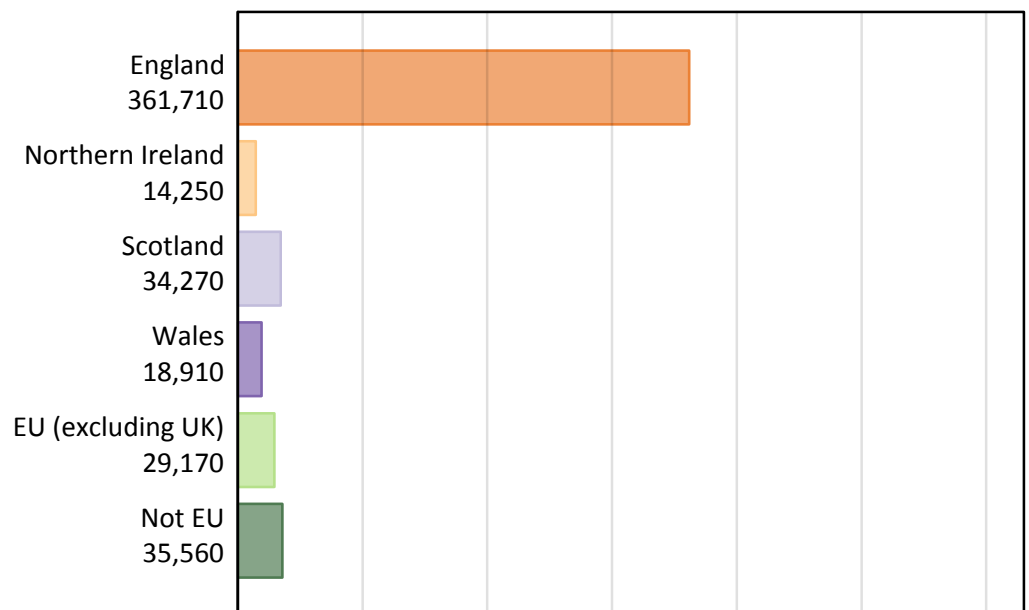
Daily Clearing Analysis: Country

Analysis at 00:05 on Friday 1 September 2017 (15 days after A level results day)

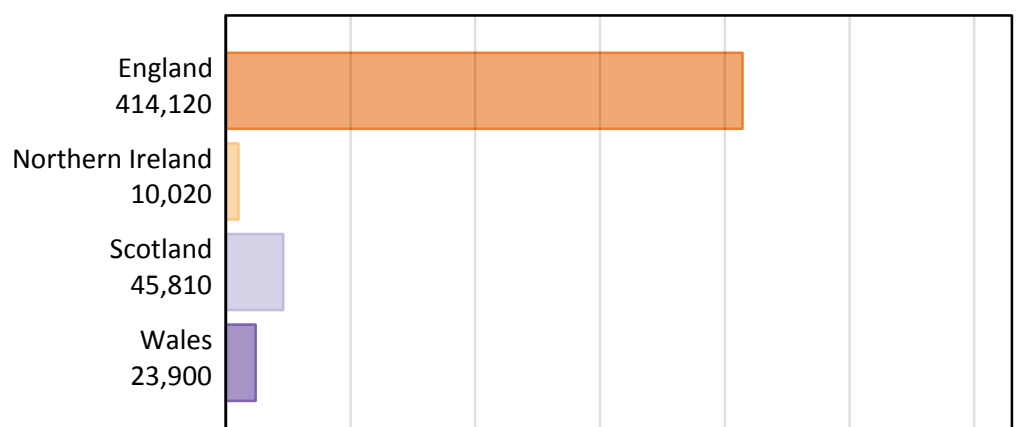
B.1 Placed applicants by country of provider and domicile, 2017 cycle

Domicile of applicant	Country of provider				
	England	Northern Ireland	Scotland	Wales	UK
England	345,930	340	5,010	10,430	361,710
Northern Ireland	3,910	9,060	1,110	170	14,250
Scotland	1,580	30	32,620	50	34,270
Wales	8,040	20	130	10,730	18,910
EU (excluding UK)	23,340	370	4,040	1,420	29,170
Not EU	31,330	220	2,910	1,090	35,560
All	414,120	10,020	45,810	23,900	493,860

B.2 Placed applicants by domicile group

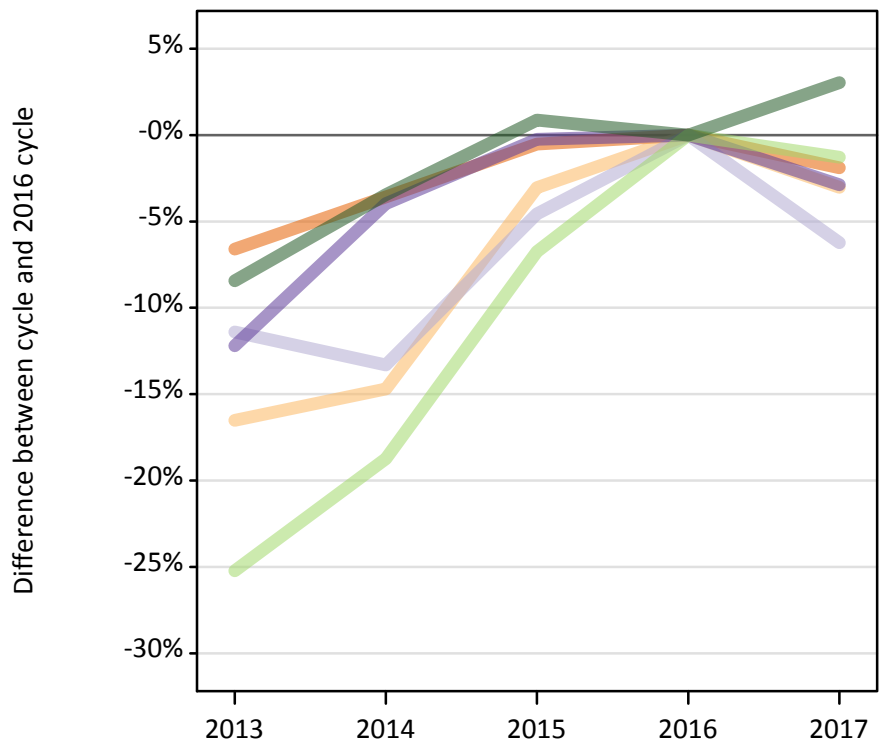
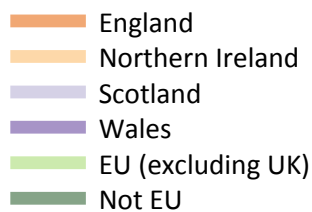


B.3 Placed applicants by country of provider



B.4 Placed applicants at 15 days after A level results day: providers in England

Selected applicant domiciles: difference between cycle and 2016 cycle (at 15 days after A level results day)



B.5 Placed applicants at 15 days after A level results day: providers in England

Placed applicants by domicile (at 15 days after A level results day)

Domicile of applicant	2013	2014	2015	2016	2017
England	329,350	339,980	350,810	352,630	345,930
Northern Ireland	3,370	3,440	3,910	4,030	3,910
Scotland	1,490	1,460	1,610	1,680	1,580
Wales	7,260	7,950	8,250	8,270	8,040
EU (excluding UK)	17,680	19,210	22,050	23,640	23,340
Not EU	27,850	29,360	30,670	30,410	31,330

B.6 Placed applicants at 15 days after A level results day: providers in England

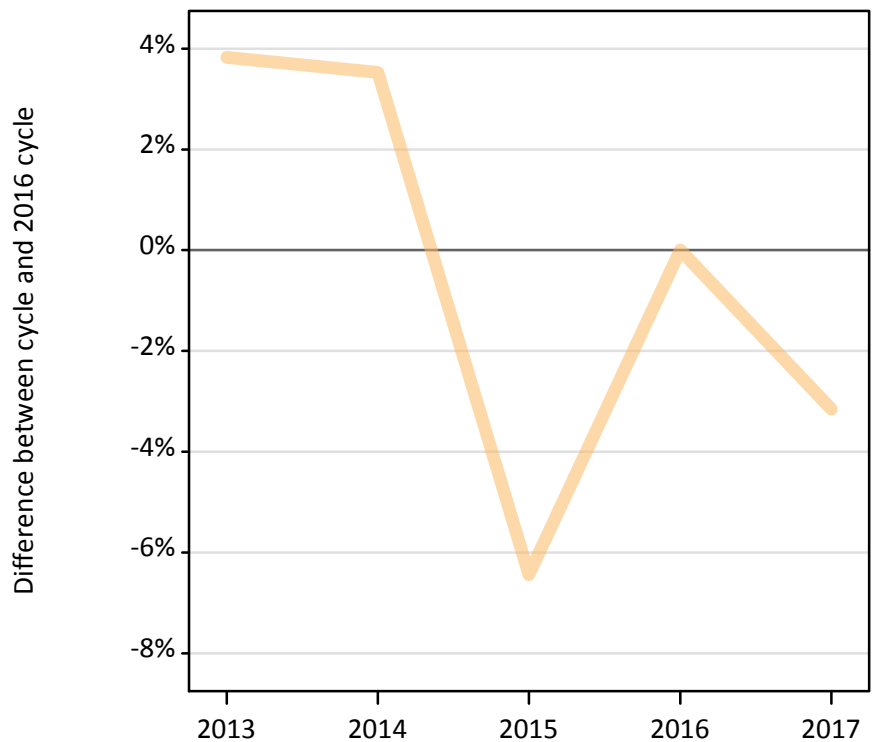
Selected applicant domiciles: difference between cycle and 2016 cycle (at 15 days after A level results day)

Domicile of applicant	2013	2014	2015	2016	2017
England	-7%	-4%	-1%	0%	-2%
Northern Ireland	-17%	-15%	-3%	0%	-3%
Scotland	-11%	-13%	-5%	0%	-6%
Wales	-12%	-4%	-0%	0%	-3%
EU (excluding UK)	-25%	-19%	-7%	0%	-1%
Not EU	-8%	-3%	1%	0%	3%

B.7 Placed applicants at 15 days after A level results day: providers in Northern Ireland

Selected applicant domiciles: difference between cycle and 2016 cycle (at 15 days after A level results day)

— Northern Ireland



B.8 Placed applicants at 15 days after A level results day: providers in Northern Ireland

Placed applicants by domicile (at 15 days after A level results day)

Domicile of applicant	2013	2014	2015	2016	2017
England	260	440	570	320	340
Northern Ireland	9,710	9,680	8,750	9,350	9,060
Scotland	20	20	20	20	30
Wales	10	10	10	10	20
EU (excluding UK)	440	470	400	350	370
Not EU	180	200	170	230	220

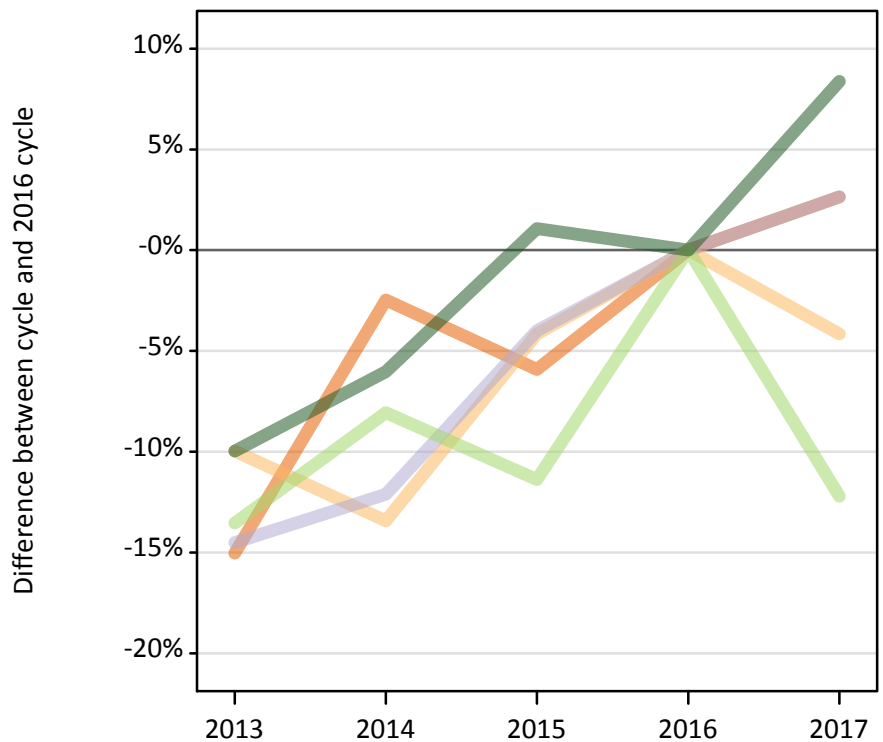
B.9 Placed applicants at 15 days after A level results day: providers in Northern Ireland

Selected applicant domiciles: difference between cycle and 2016 cycle (at 15 days after A level results day)

Domicile of applicant	2013	2014	2015	2016	2017
Northern Ireland	4%	4%	-6%	0%	-3%

B.10 Placed applicants at 15 days after A level results day: providers in Scotland

Selected applicant domiciles: difference between cycle and 2016 cycle (at 15 days after A level results day)



B.11 Placed applicants at 15 days after A level results day: providers in Scotland

Placed applicants by domicile (at 15 days after A level results day)

Domicile of applicant	2013	2014	2015	2016	2017
England	4,150	4,760	4,600	4,880	5,010
Northern Ireland	1,040	1,000	1,110	1,150	1,110
Scotland	27,170	27,930	30,510	31,780	32,620
Wales	110	110	120	140	130
EU (excluding UK)	3,980	4,230	4,080	4,600	4,040
Not EU	2,420	2,530	2,720	2,690	2,910

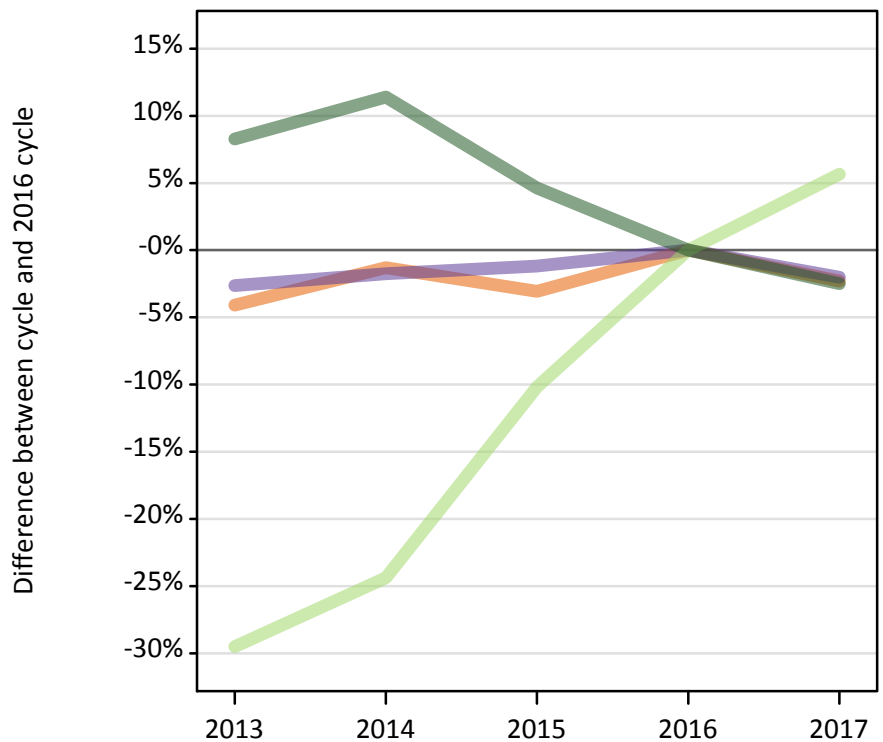
B.12 Placed applicants at 15 days after A level results day: providers in Scotland

Selected applicant domiciles: difference between cycle and 2016 cycle (at 15 days after A level results day)

Domicile of applicant	2013	2014	2015	2016	2017
England	-15%	-2%	-6%	0%	3%
Northern Ireland	-10%	-13%	-4%	0%	-4%
Scotland	-15%	-12%	-4%	0%	3%
EU (excluding UK)	-14%	-8%	-11%	0%	-12%
Not EU	-10%	-6%	1%	0%	8%

B.13 Placed applicants at 15 days after A level results day: providers in Wales

Selected applicant domiciles: difference between cycle and 2016 cycle (at 15 days after A level results day)



B.14 Placed applicants at 15 days after A level results day: providers in Wales

Placed applicants by domicile (at 15 days after A level results day)

Domicile of applicant	2013	2014	2015	2016	2017
England	10,240	10,540	10,350	10,680	10,430
Northern Ireland	160	150	170	180	170
Scotland	60	60	50	50	50
Wales	10,670	10,760	10,830	10,950	10,730
EU (excluding UK)	950	1,020	1,210	1,350	1,420
Not EU	1,220	1,250	1,170	1,120	1,090

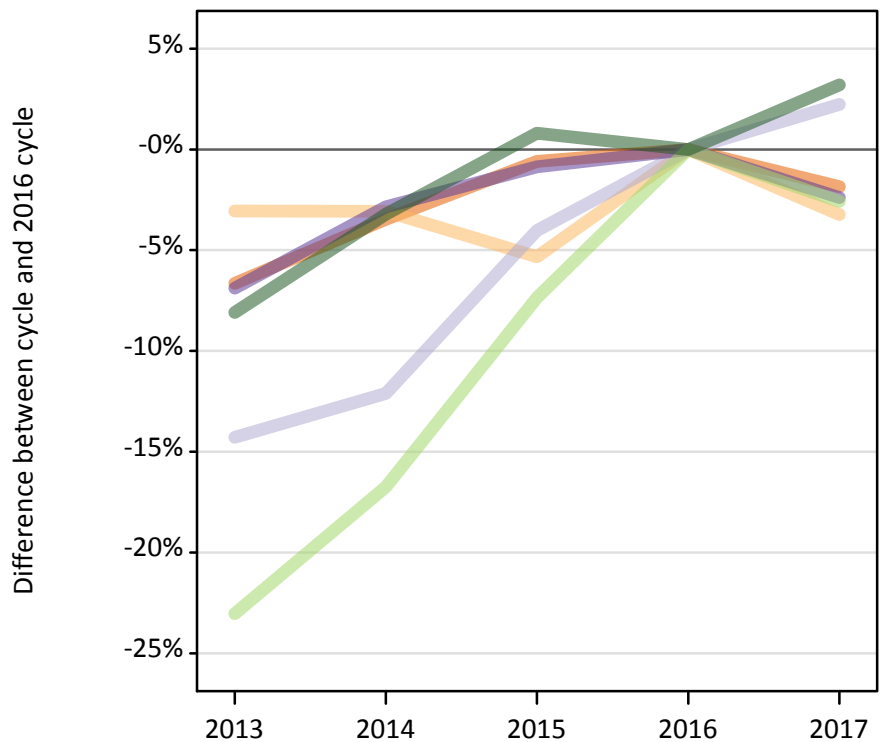
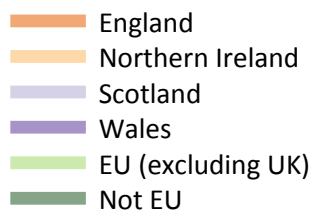
B.15 Placed applicants at 15 days after A level results day: providers in Wales

Selected applicant domiciles: difference between cycle and 2016 cycle (at 15 days after A level results day)

Domicile of applicant	2013	2014	2015	2016	2017
England	-4%	-1%	-3%	0%	-2%
Wales	-3%	-2%	-1%	0%	-2%
EU (excluding UK)	-30%	-24%	-10%	0%	6%
Not EU	8%	11%	5%	0%	-2%

B.16 Placed applicants at 15 days after A level results day: providers in the UK

Selected applicant domiciles: difference between cycle and 2016 cycle (at 15 days after A level results day)



B.17 Placed applicants at 15 days after A level results day: providers in the UK

Placed applicants by domicile (at 15 days after A level results day)

Domicile of applicant	2013	2014	2015	2016	2017
England	344,000	355,720	366,320	368,510	361,710
Northern Ireland	14,270	14,270	13,940	14,720	14,250
Scotland	28,740	29,470	32,180	33,520	34,270
Wales	18,040	18,820	19,210	19,370	18,910
EU (excluding UK)	23,040	24,930	27,740	29,940	29,170
Not EU	31,660	33,340	34,730	34,450	35,560

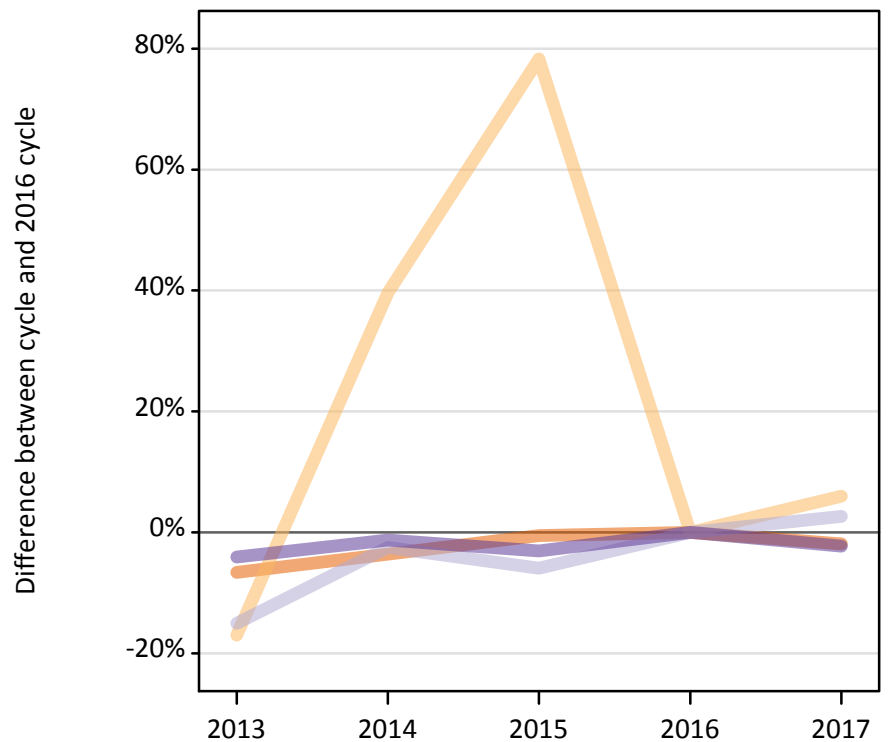
B.18 Placed applicants at 15 days after A level results day: providers in the UK

Selected applicant domiciles: difference between cycle and 2016 cycle (at 15 days after A level results day)

Domicile of applicant	2013	2014	2015	2016	2017
England	-7%	-3%	-1%	0%	-2%
Northern Ireland	-3%	-3%	-5%	0%	-3%
Scotland	-14%	-12%	-4%	0%	2%
Wales	-7%	-3%	-1%	0%	-2%
EU (excluding UK)	-23%	-17%	-7%	0%	-3%
Not EU	-8%	-3%	1%	0%	3%

B.19 Placed applicants at 15 days after A level results day: domiciled in England

Selected provider countries: difference between cycle and 2016 cycle (at 15 days after A level results day)



B.20 Placed applicants at 15 days after A level results day: domiciled in England

Placed applicants by provider country (at 15 days after A level results day)

Country of provider	2013	2014	2015	2016	2017
England	329,350	339,980	350,810	352,630	345,930
Northern Ireland	260	440	570	320	340
Scotland	4,150	4,760	4,600	4,880	5,010
Wales	10,240	10,540	10,350	10,680	10,430

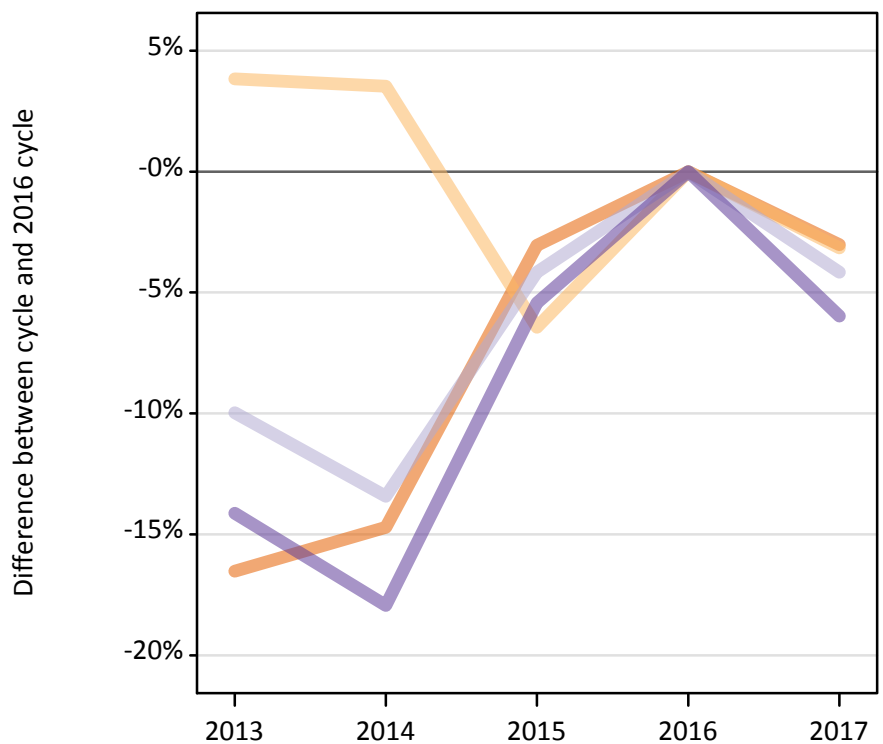
B.21 Placed applicants at 15 days after A level results day: domiciled in England

Selected provider countries: difference between cycle and 2016 cycle (at 15 days after A level results day)

Country of provider	2013	2014	2015	2016	2017
England	-7%	-4%	-1%	0%	-2%
Northern Ireland	-17%	40%	78%	0%	6%
Scotland	-15%	-2%	-6%	0%	3%
Wales	-4%	-1%	-3%	0%	-2%

B.22 Placed applicants at 15 days after A level results day: domiciled in Northern Ireland

Selected provider countries: difference between cycle and 2016 cycle (at 15 days after A level results day)



B.23 Placed applicants at 15 days after A level results day: domiciled in Northern Ireland

Placed applicants by provider country (at 15 days after A level results day)

Country of provider	2013	2014	2015	2016	2017
England	3,370	3,440	3,910	4,030	3,910
Northern Ireland	9,710	9,680	8,750	9,350	9,060
Scotland	1,040	1,000	1,110	1,150	1,110
Wales	160	150	170	180	170

B.24 Placed applicants at 15 days after A level results day: domiciled in Northern Ireland

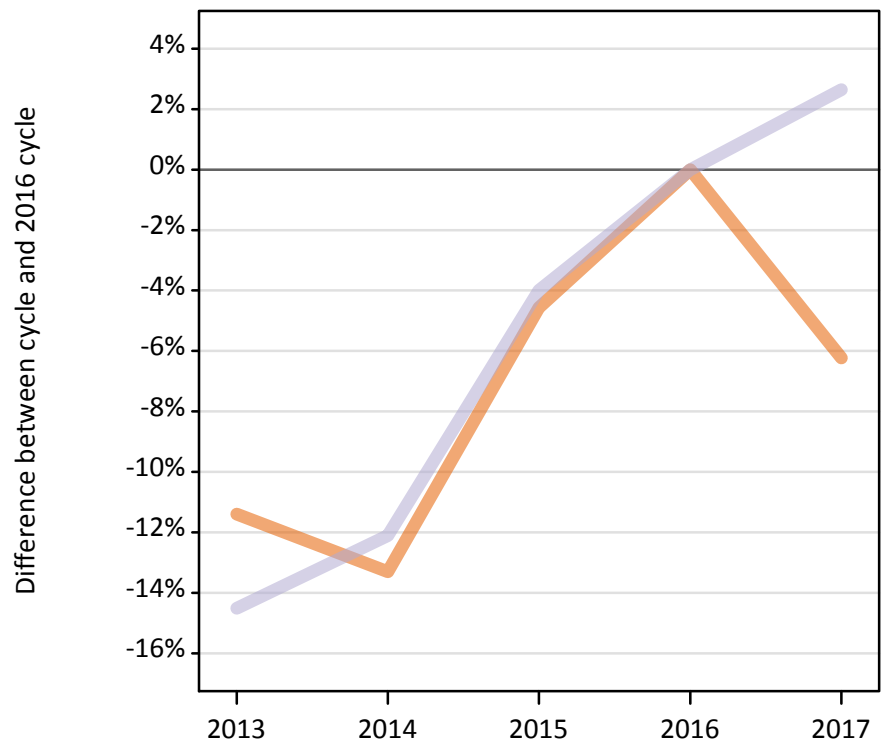
Selected provider countries: difference between cycle and 2016 cycle (at 15 days after A level results day)

Country of provider	2013	2014	2015	2016	2017
England	-17%	-15%	-3%	0%	-3%
Northern Ireland	4%	4%	-6%	0%	-3%
Scotland	-10%	-13%	-4%	0%	-4%
Wales	-14%	-18%	-5%	0%	-6%

B.25 Placed applicants at 15 days after A level results day: domiciled in Scotland

Selected provider countries: difference between cycle and 2016 cycle (at 15 days after A level results day)

England
Scotland



B.26 Placed applicants at 15 days after A level results day: domiciled in Scotland

Placed applicants by provider country (at 15 days after A level results day)

Country of provider	2013	2014	2015	2016	2017
England	1,490	1,460	1,610	1,680	1,580
Northern Ireland	20	20	20	20	30
Scotland	27,170	27,930	30,510	31,780	32,620
Wales	60	60	50	50	50

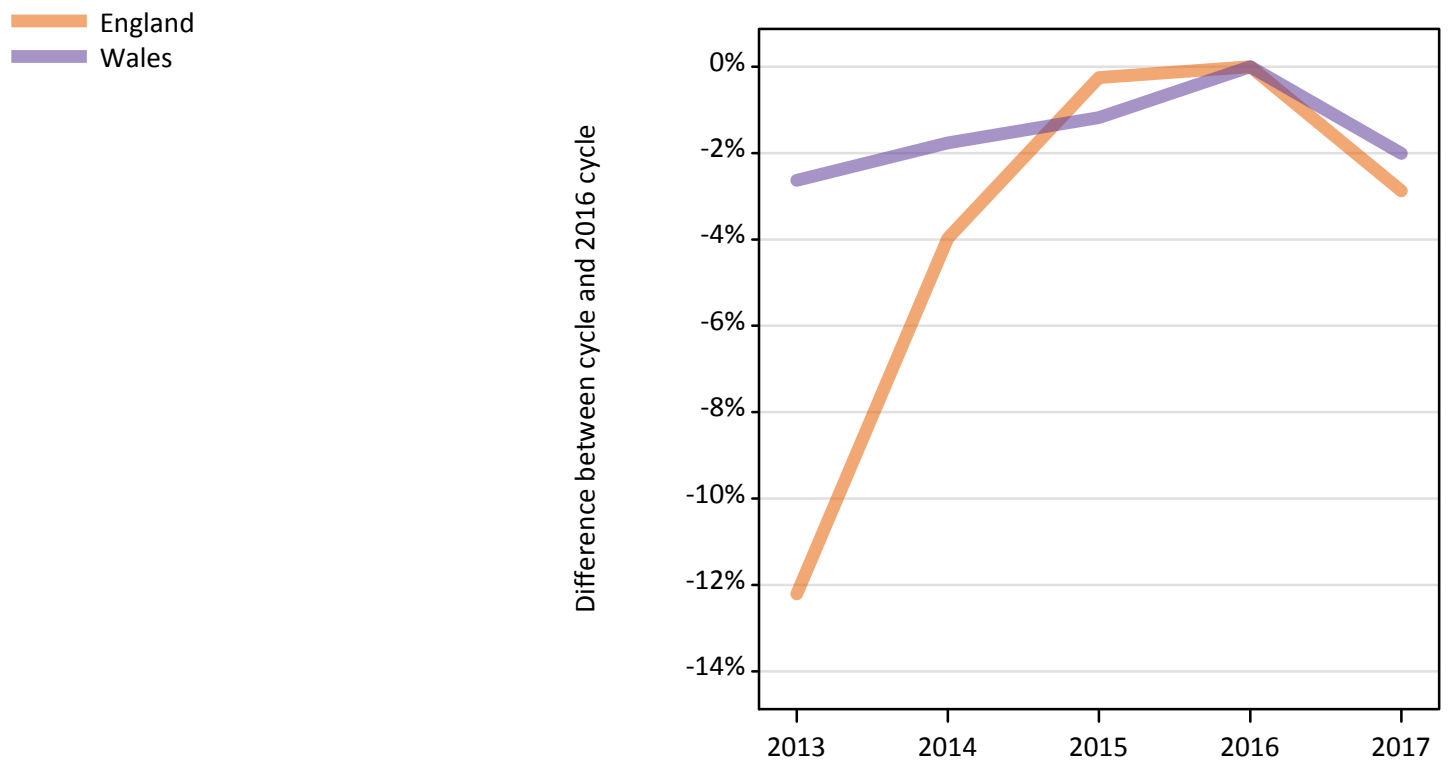
B.27 Placed applicants at 15 days after A level results day: domiciled in Scotland

Selected provider countries: difference between cycle and 2016 cycle (at 15 days after A level results day)

Country of provider	2013	2014	2015	2016	2017
England	-11%	-13%	-5%	0%	-6%
Scotland	-15%	-12%	-4%	0%	3%

B.28 Placed applicants at 15 days after A level results day: domiciled in Wales

Selected provider countries: difference between cycle and 2016 cycle (at 15 days after A level results day)



B.29 Placed applicants at 15 days after A level results day: domiciled in Wales

Placed applicants by provider country (at 15 days after A level results day)

Country of provider	2013	2014	2015	2016	2017
England	7,260	7,950	8,250	8,270	8,040
Northern Ireland	10	10	10	10	20
Scotland	110	110	120	140	130
Wales	10,670	10,760	10,830	10,950	10,730

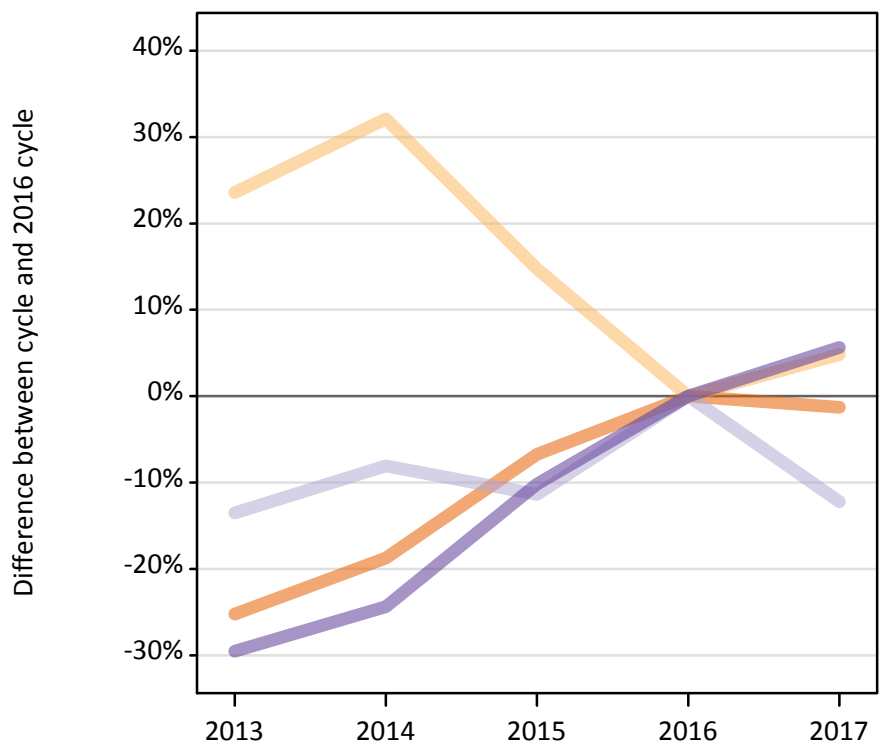
B.30 Placed applicants at 15 days after A level results day: domiciled in Wales

Selected provider countries: difference between cycle and 2016 cycle (at 15 days after A level results day)

Country of provider	2013	2014	2015	2016	2017
England	-12%	-4%	-1%	0%	-3%
Wales	-3%	-2%	-1%	0%	-2%

B.31 Placed applicants at 15 days after A level results day: domiciled in EU (excluding UK)

Selected provider countries: difference between cycle and 2016 cycle (at 15 days after A level results day)



B.32 Placed applicants at 15 days after A level results day: domiciled in EU (excluding UK)

Placed applicants by provider country (at 15 days after A level results day)

Country of provider	2013	2014	2015	2016	2017
England	17,680	19,210	22,050	23,640	23,340
Northern Ireland	440	470	400	350	370
Scotland	3,980	4,230	4,080	4,600	4,040
Wales	950	1,020	1,210	1,350	1,420

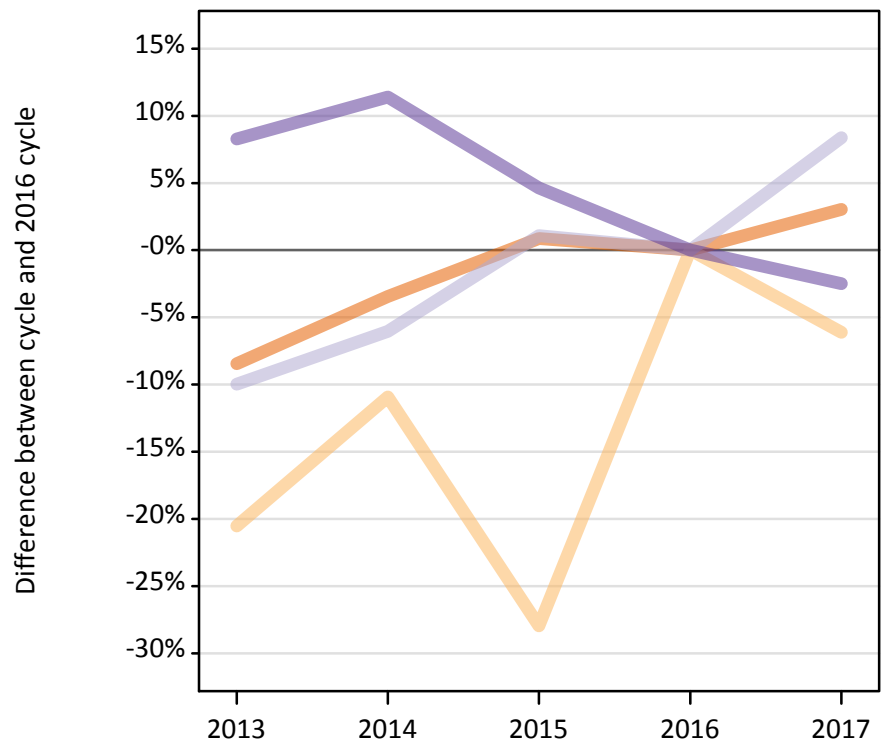
B.33 Placed applicants at 15 days after A level results day: domiciled in EU (excluding UK)

Selected provider countries: difference between cycle and 2016 cycle (at 15 days after A level results day)

Country of provider	2013	2014	2015	2016	2017
England	-25%	-19%	-7%	0%	-1%
Northern Ireland	24%	32%	15%	0%	5%
Scotland	-14%	-8%	-11%	0%	-12%
Wales	-30%	-24%	-10%	0%	6%

B.34 Placed applicants at 15 days after A level results day: domiciled in Not EU

Selected provider countries: difference between cycle and 2016 cycle (at 15 days after A level results day)



B.35 Placed applicants at 15 days after A level results day: domiciled in Not EU

Placed applicants by provider country (at 15 days after A level results day)

Country of provider	2013	2014	2015	2016	2017
England	27,850	29,360	30,670	30,410	31,330
Northern Ireland	180	200	170	230	220
Scotland	2,420	2,530	2,720	2,690	2,910
Wales	1,220	1,250	1,170	1,120	1,090

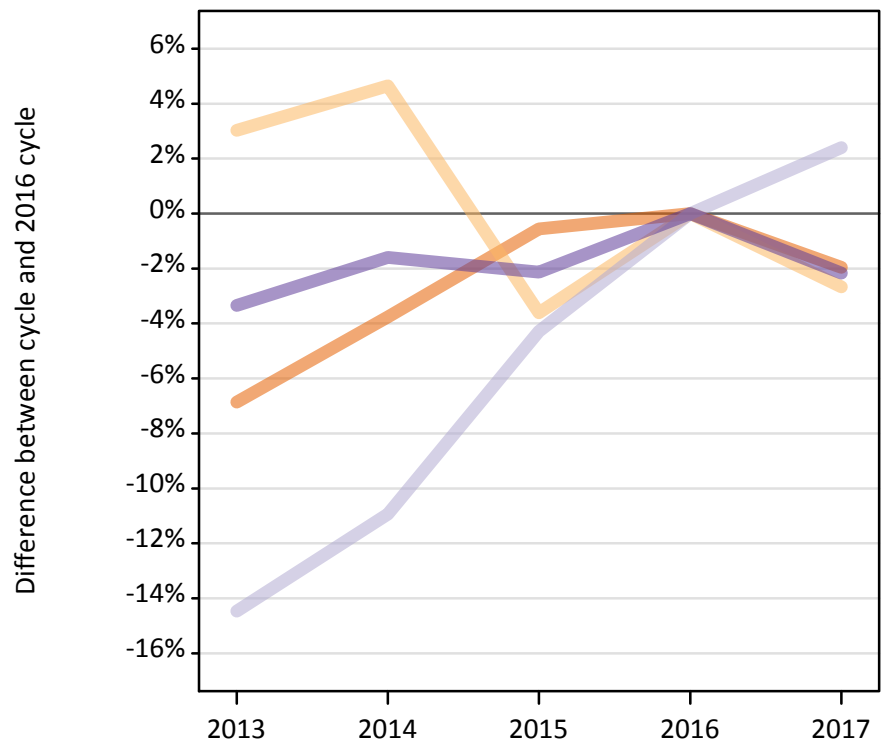
B.36 Placed applicants at 15 days after A level results day: domiciled in Not EU

Selected provider countries: difference between cycle and 2016 cycle (at 15 days after A level results day)

Country of provider	2013	2014	2015	2016	2017
England	-8%	-3%	1%	0%	3%
Northern Ireland	-21%	-11%	-28%	0%	-6%
Scotland	-10%	-6%	1%	0%	8%
Wales	8%	11%	5%	0%	-2%

B.37 Placed applicants at 15 days after A level results day: domiciled in UK

Selected provider countries: difference between cycle and 2016 cycle (at 15 days after A level results day)



B.38 Placed applicants at 15 days after A level results day: domiciled in UK

Placed applicants by provider country (at 15 days after A level results day)

Country of provider	2013	2014	2015	2016	2017
England	341,470	352,820	364,580	366,620	359,450
Northern Ireland	9,990	10,150	9,350	9,700	9,440
Scotland	32,460	33,800	36,320	37,950	38,860
Wales	21,130	21,510	21,390	21,860	21,380

B.39 Placed applicants at 15 days after A level results day: domiciled in UK

Selected provider countries: difference between cycle and 2016 cycle (at 15 days after A level results day)

Country of provider	2013	2014	2015	2016	2017
England	-7%	-4%	-1%	0%	-2%
Northern Ireland	3%	5%	-4%	0%	-3%
Scotland	-14%	-11%	-4%	0%	2%
Wales	-3%	-2%	-2%	0%	-2%