

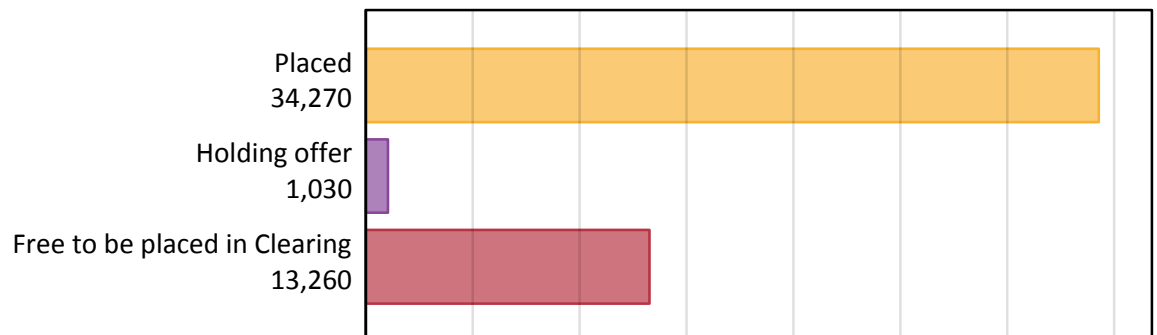
Daily Clearing Analysis: Overview

Analysis at 00:05 on Friday 1 September 2017 (15 days after A level results day)

A.1 Applicants by type and status from Scotland, 2017 cycle

Applicant type	Status	2017
Main scheme	Placed (Clearing)	1,270
	Placed (Adjustment)	0
	Placed (Firm)	30,440
	Placed (Insurance)	1,500
	Placed (Other)	720
	Holding offer	1,030
	Free to be placed in Clearing	13,260
Direct to Clearing	Placed (Direct to Clearing)	340
	Other (Direct to Clearing)	330
All applicants	Placed	34,270

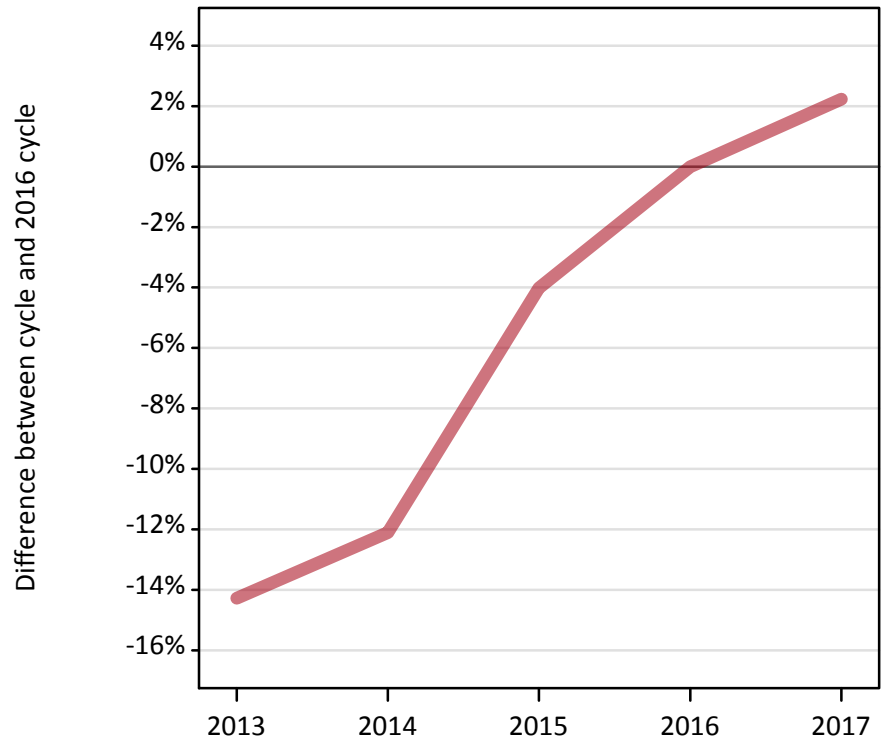
A.2 Summary of applicants who are placed, holding offers or free to be placed in Clearing (Scotland)



A.3 All placed applicants from Scotland: 15 days after A level results day

All placed applicants: difference between cycle and 2016 cycle

Placed



A.4 All placed applicants from Scotland: 15 days after A level results day

All placed applicants: applicants at 15 days after A level results day

Applicant type	Status	2013	2014	2015	2016	2017
All applicants	Placed	28,740	29,470	32,180	33,520	34,270

A.5 All placed applicants from Scotland: 15 days after A level results day

All placed applicants: difference between cycle and 2016 cycle

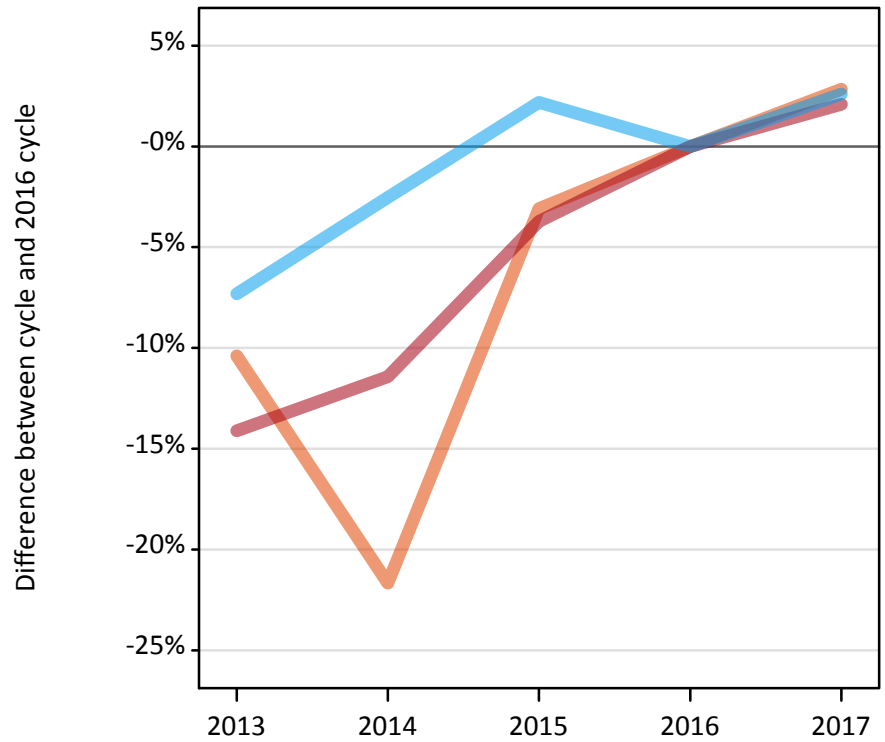
Applicant type	Status	2013	2014	2015	2016	2017
All applicants	Placed	-14%	-12%	-4%	0%	2%

Note: Percentage changes are not plotted for lines with, on average, fewer than 30 applicants per year. As a result, lines for some, or all, of the states may be missing.

A.6 Placed main scheme applicants from Scotland: 15 days after A level results day

Selected placed routes: difference between cycle and 2016 cycle

- Placed (Clearing)
- Placed (Firm)
- Placed (Insurance)



A.7 Placed main scheme applicants from Scotland: 15 days after A level results day

All Main scheme placed routes (excluding Adjustment): applicants at 15 days after A level results day

Applicant type	Status	2013	2014	2015	2016	2017
Main scheme	Placed (Clearing)	1,100	970	1,190	1,230	1,270
	Placed (Firm)	25,610	26,410	28,710	29,820	30,440
	Placed (Insurance)	1,360	1,430	1,500	1,470	1,500
	Placed (Other)	500	520	550	680	720

A.8 Placed main scheme applicants from Scotland: 15 days after A level results day

Selected placed routes: difference between cycle and 2016 cycle

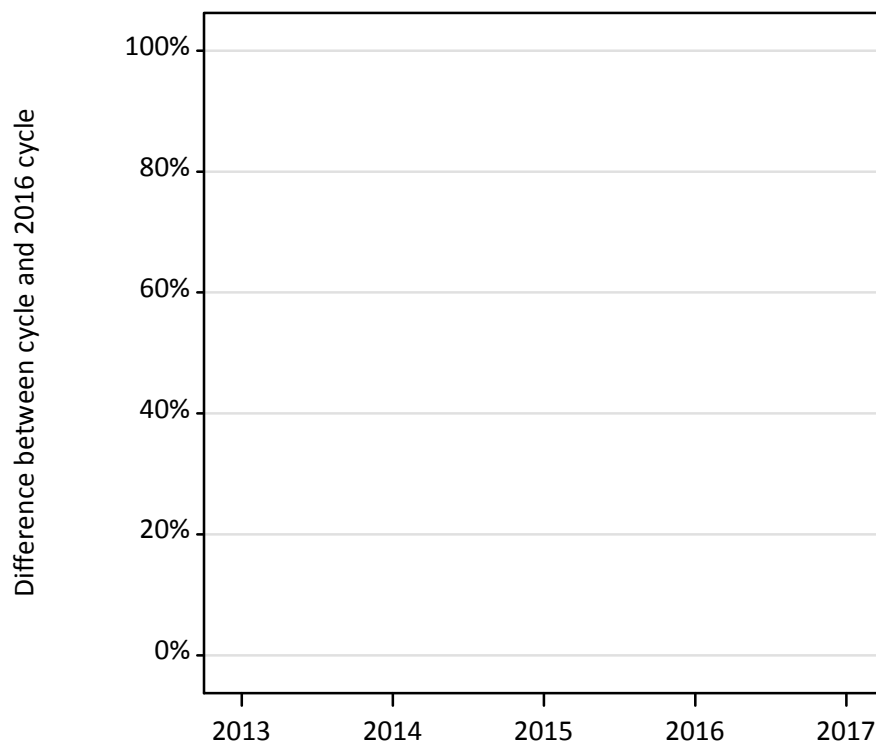
Applicant type	Status	2013	2014	2015	2016	2017
Main scheme	Placed (Clearing)	-10%	-22%	-3%	0%	3%
	Placed (Firm)	-14%	-11%	-4%	0%	2%
	Placed (Insurance)	-7%	-3%	2%	0%	3%

Note: Percentage changes are not plotted for lines with, on average, fewer than 30 applicants per year. As a result, lines for some, or all, of the states may be missing.

A.9 Main scheme applicants placed through adjustment: 15 days after A level results day

Placed through adjustment: difference between cycle and 2016 cycle

Placed (Adjustment)



A.10 Main scheme applicants placed through adjustment: 15 days after A level results day

Placed through adjustment: applicants at 15 days after A level results day

Applicant type	Status	2013	2014	2015	2016	2017
Main scheme	Placed (Adjustment)	10	10	10	10	0

A.11 Main scheme applicants placed through adjustment: 15 days after A level results day

Placed through adjustment: difference between cycle and 2016 cycle

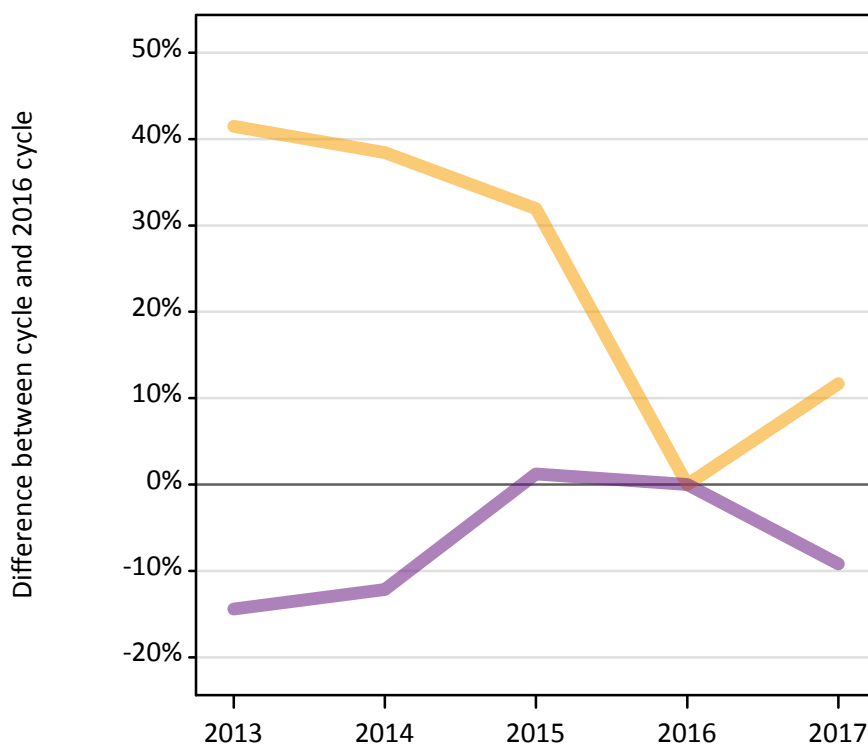
Applicant type	Status	2013	2014	2015	2016	2017
Main scheme	Placed (Adjustment)	22%	22%	-44%	0%	-78%

Note: Percentage changes are not plotted for lines with, on average, fewer than 30 applicants per year. As a result, lines for some, or all, of the states may be missing.

A.12 Main scheme applicants not currently placed from Scotland: 15 days after A level results day

Applicants in unplaced states: difference between cycle and 2016 cycle

— Holding offer
— Free to be placed in Clearing



A.13 Main scheme applicants not currently placed from Scotland: 15 days after A level results day

Applicants in unplaced states: applicants at 15 days after A level results day

Applicant type	Status	2013	2014	2015	2016	2017
Main scheme	Holding offer	1,310	1,280	1,220	930	1,030
	Free to be placed in Clearing	12,500	12,820	14,770	14,600	13,260

A.14 Main scheme applicants not currently placed from Scotland: 15 days after A level results day

Applicants in unplaced states: difference between cycle and 2016 cycle

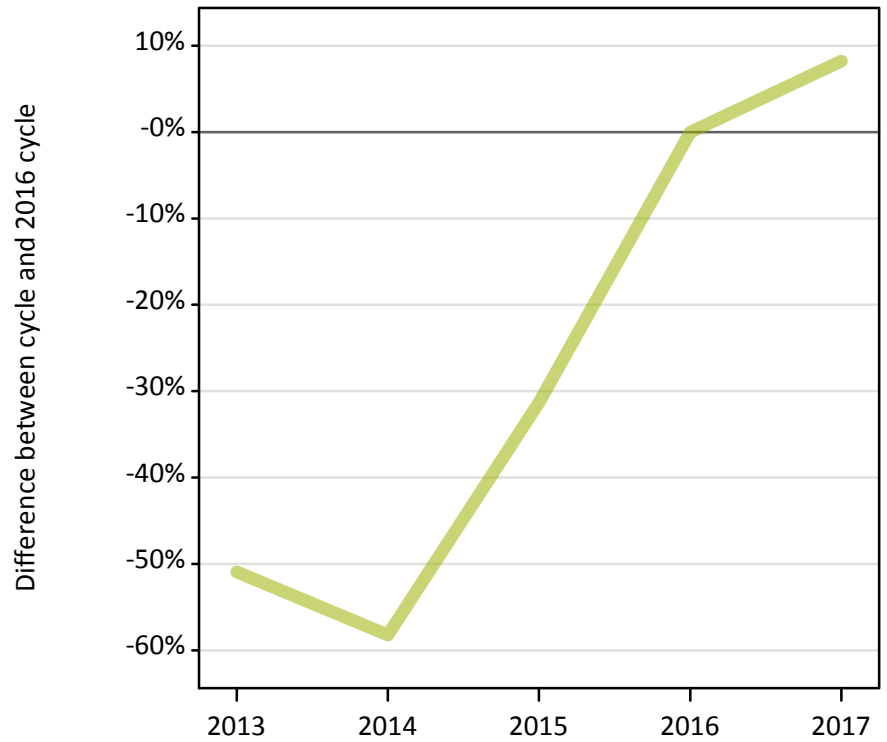
Applicant type	Status	2013	2014	2015	2016	2017
Main scheme	Holding offer	41%	38%	32%	0%	12%
	Free to be placed in Clearing	-14%	-12%	1%	0%	-9%

Note: Percentage changes are not plotted for lines with, on average, fewer than 30 applicants per year. As a result, lines for some, or all, of the states may be missing.

A.15 Direct to Clearing applicants from Scotland: 15 days after A level results day

Placed (Direct to Clearing): difference between cycle and 2016 cycle

Placed (Direct to Clearing)



A.16 Direct to Clearing applicants from Scotland: 15 days after A level results day

Direct to Clearing 15 days after A level results day

Applicant type	Status	2013	2014	2015	2016	2017
Direct to Clearing	Placed (Direct to Clearing)	160	130	220	320	340
	Other (Direct to Clearing)	280	260	350	340	330

A.17 Direct to Clearing applicants from Scotland: 15 days after A level results day

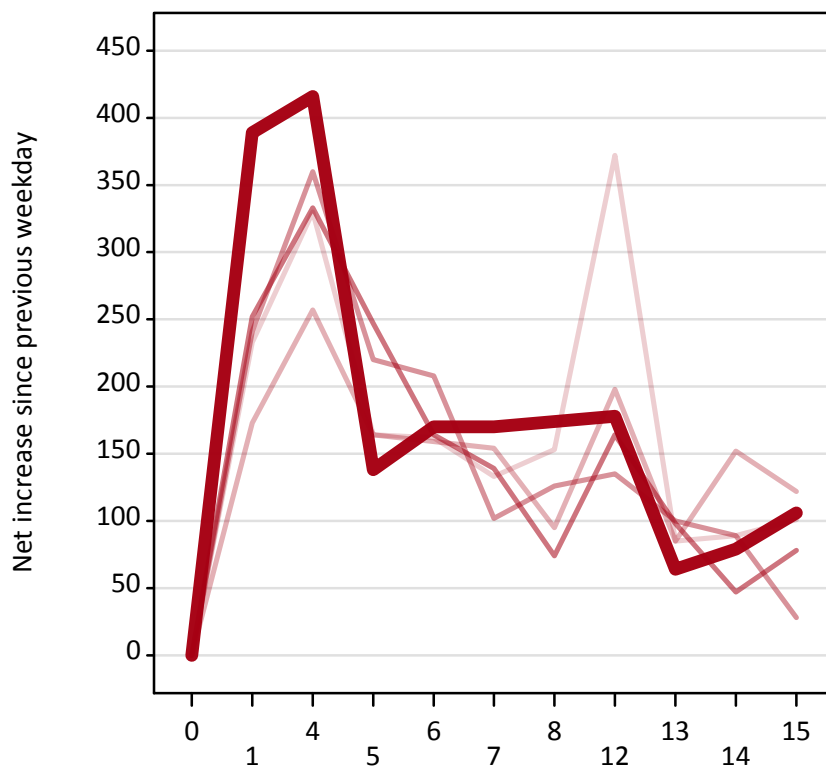
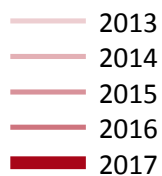
Placed (Direct to Clearing): difference between cycle and 2016 cycle

Applicant type	Status	2013	2014	2015	2016	2017
Direct to Clearing	Placed (Direct to Clearing)	-51%	-58%	-31%	0%	8%

Note: Percentage changes are not plotted for lines with, on average, fewer than 30 applicants per year. As a result, lines for some, or all, of the states may be missing.

A.18 All Placed: Daily net change (from Scotland)

Net increase since previous weekday (2017 cycle up to 15 days after A level results day)



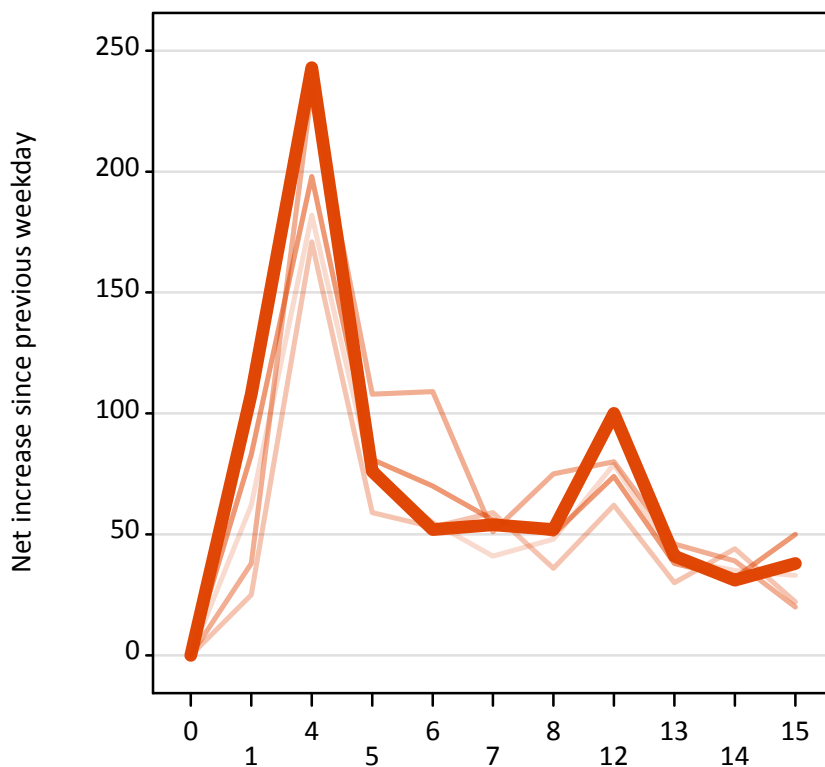
A.19 All Placed: Daily net change (from Scotland)

Net increase since previous weekday (2017 cycle up to 15 days after A level results day)

Applicant status, days since A level results day		2013	2014	2015	2016	2017
All Placed	0	0	0	0	0	0
	1	230	170	240	250	390
	4	330	260	360	330	420
	5	160	160	220	250	140
	6	160	160	210	160	170
	7	130	150	100	140	170
	8	150	100	130	70	170
	12	370	200	140	160	180
	13	90	90	100	100	60
	14	90	150	90	50	80
	15	100	120	30	80	110

A.20 Placed through Clearing only: Daily net change (from Scotland)

Net increase since previous weekday (2017 cycle up to 15 days after A level results day)



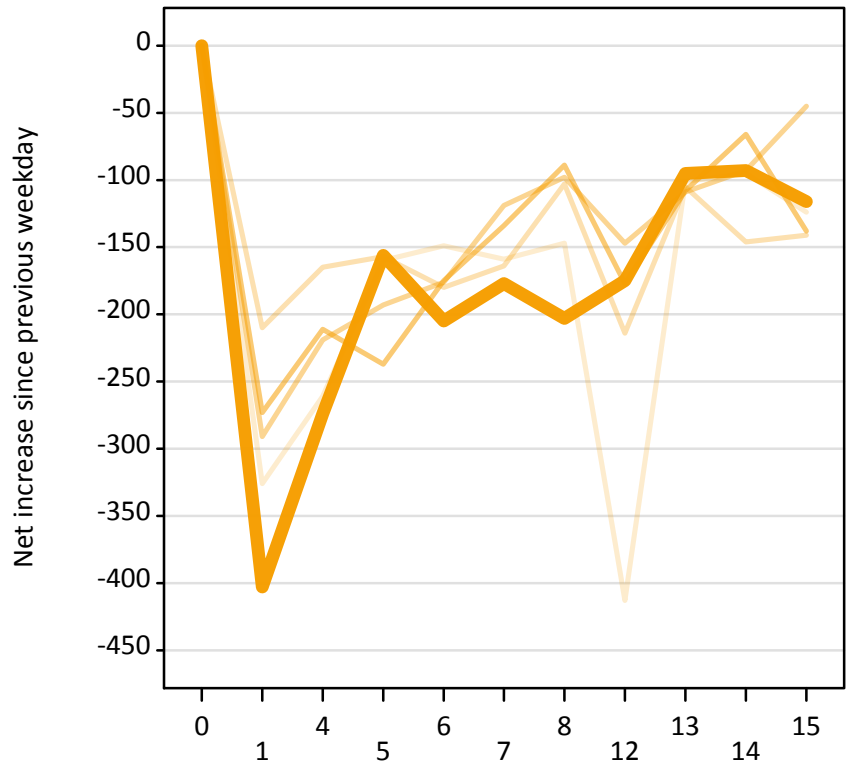
A.21 Placed through Clearing only: Daily net change (from Scotland)

Net increase since previous weekday (2017 cycle up to 15 days after A level results day)

Applicant status, days since A level results day		2013	2014	2015	2016	2017
Placed through Clearing only	0	0	0	0	0	0
	1	60	30	40	80	110
	4	180	170	230	200	240
	5	70	60	110	80	80
	6	60	50	110	70	50
	7	40	60	50	60	50
	8	50	40	80	50	50
	12	80	60	80	70	100
	13	40	30	50	40	40
	14	40	40	40	30	30
	15	30	20	20	50	40

A.22 Holding Offer: Daily net change (from Scotland)

Net increase since previous weekday (2017 cycle up to 15 days after A level results day)



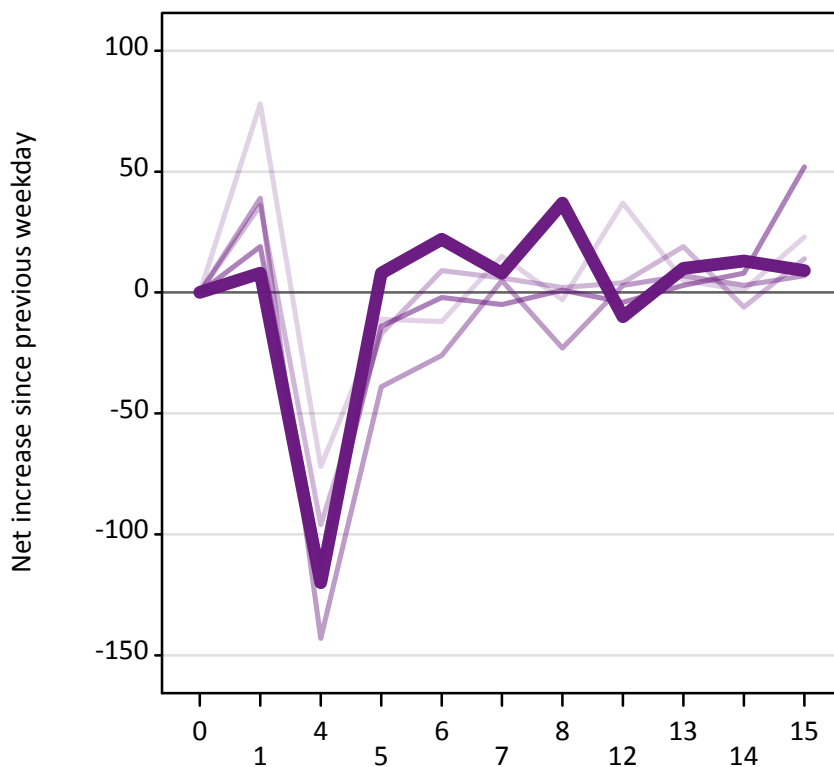
A.23 Holding Offer: Daily net change (from Scotland)

Net increase since previous weekday (2017 cycle up to 15 days after A level results day)

Applicant status, days since A level results day		2013	2014	2015	2016	2017
Holding Offer	0	0	0	0	0	0
	1	-330	-210	-290	-270	-400
	4	-260	-170	-220	-210	-270
	5	-160	-160	-190	-240	-160
	6	-150	-180	-180	-180	-210
	7	-160	-160	-120	-130	-180
	8	-150	-100	-100	-90	-200
	12	-410	-210	-150	-180	-180
	13	-100	-110	-110	-110	-100
	14	-100	-150	-90	-70	-90
	15	-120	-140	-50	-140	-120

A.24 Free to be placed in Clearing: Daily net change (from Scotland)

Net increase since previous weekday (2017 cycle up to 15 days after A level results day)



A.25 Free to be placed in Clearing: Daily net change (from Scotland)

Net increase since previous weekday (2017 cycle up to 15 days after A level results day)

Applicant status, days since A level results day		2013	2014	2015	2016	2017
Free to be placed in Clearing	0	0	0	0	0	0
	1	80	40	40	20	10
	4	-70	-100	-140	-110	-120
	5	-10	-20	-40	-10	10
	6	-10	10	-30	0	20
	7	20	10	10	-10	10
	8	0	0	-20	0	40
	12	40	0	0	0	-10
	13	10	20	10	0	10
	14	0	-10	0	10	10
	15	20	10	10	50	10