

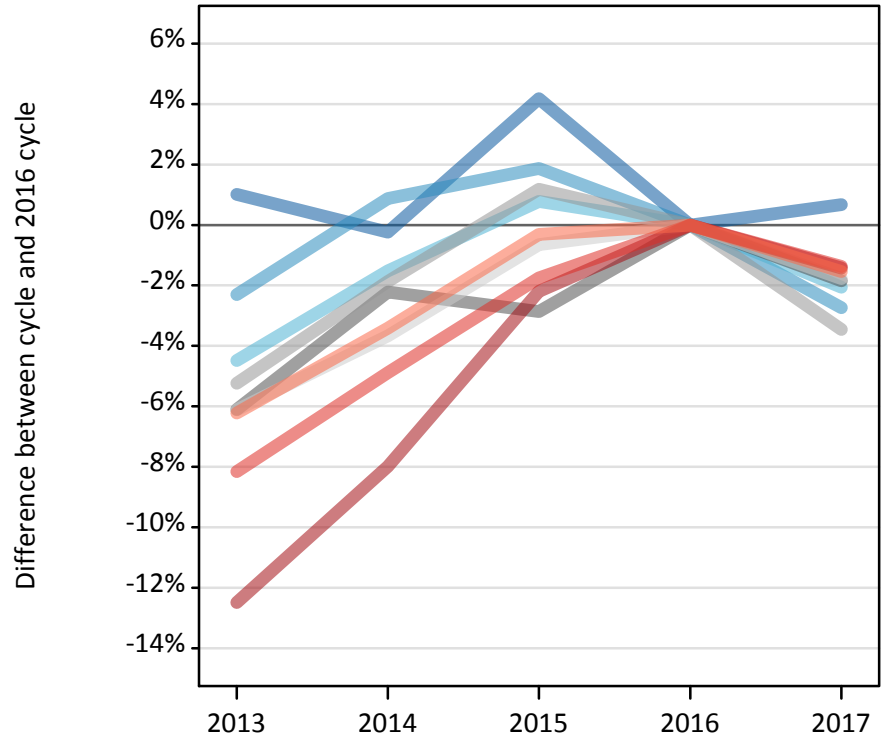
Daily Clearing Analysis: Region

Analysis at 00:05 on Wednesday 30 August 2017 (13 days after A level results day)

R.1 Placed applicants by region of domicile: 13 days after A level results day

Placed applicants: change relative to 2016 cycle totals

- North East
- North West
- Yorkshire and The Humber
- East Midlands
- West Midlands
- East of England
- London
- South East
- South West



R.2 Placed applicants by region of domicile: 13 days after A level results day

Applicant Status	Domicile	2013	2014	2015	2016	2017
Placed	North East	15,350	15,170	15,840	15,200	15,300
	North West	46,280	47,790	48,260	47,370	46,070
	Yorkshire and The Humber	31,710	32,690	33,450	33,190	32,510
	East Midlands	26,580	27,680	27,500	28,310	27,790
	West Midlands	36,390	37,690	38,860	38,400	37,070
	East of England	35,480	36,410	37,550	37,800	37,120
	London	62,280	65,480	69,600	71,170	70,150
	South East	54,770	56,730	58,600	59,640	58,820
	South West	31,510	32,460	33,500	33,600	33,090
	(England total)	340,360	352,080	363,150	364,680	357,940
	Scotland	28,550	29,190	32,060	33,400	34,090
	Northern Ireland	14,110	14,120	13,840	14,620	14,170
	Wales	17,880	18,660	19,120	19,250	18,770
	UK	400,900	414,050	428,160	431,950	424,970

R.3 Placed applicants by region of domicile: 13 days after A level results day

Placed applicants: change relative to 2016 cycle totals

Applicant Status	Domicile	2013	2014	2015	2016	2017
Placed	North East	1%	-0%	4%	0%	1%
	North West	-2%	1%	2%	0%	-3%
	Yorkshire and The Humber	-4%	-2%	1%	0%	-2%
	East Midlands	-6%	-2%	-3%	0%	-2%
	West Midlands	-5%	-2%	1%	0%	-3%
	East of England	-6%	-4%	-1%	0%	-2%
	London	-12%	-8%	-2%	0%	-1%
	South East	-8%	-5%	-2%	0%	-1%
	South West	-6%	-3%	-0%	0%	-2%
	(England total)	-7%	-3%	-0%	0%	-2%
	Scotland	-15%	-13%	-4%	0%	2%
	Northern Ireland	-4%	-3%	-5%	0%	-3%
	Wales	-7%	-3%	-1%	0%	-2%
	UK	-7%	-4%	-1%	0%	-2%

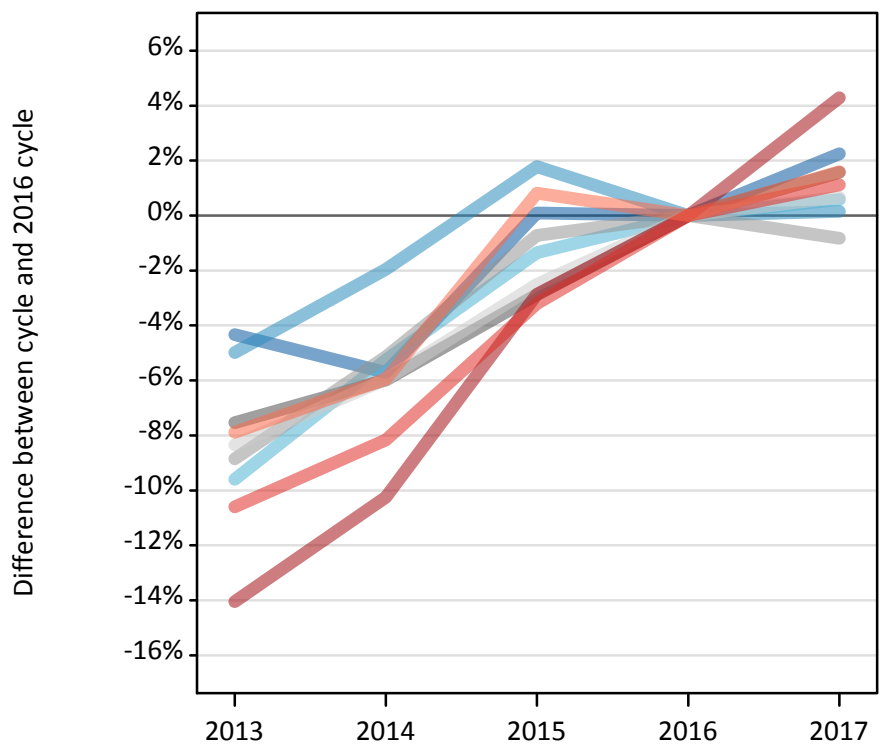
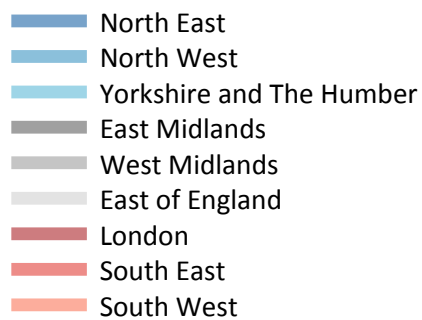
R.4 Placed applicants by region of domicile: 13 days after A level results day

Placed applicants: absolute change relative to 2016 cycle totals

Applicant Status	Domicile	2013	2014	2015	2016	2017
Placed	North East	150	-40	640	0	100
	North West	-1,090	420	890	0	-1,300
	Yorkshire and The Humber	-1,490	-500	260	0	-680
	East Midlands	-1,730	-630	-810	0	-520
	West Midlands	-2,010	-720	460	0	-1,330
	East of England	-2,310	-1,390	-240	0	-670
	London	-8,890	-5,680	-1,570	0	-1,010
	South East	-4,870	-2,910	-1,040	0	-820
	South West	-2,090	-1,150	-110	0	-520
	(England total)	-24,320	-12,600	-1,540	0	-6,740
	Scotland	-4,850	-4,210	-1,340	0	690
	Northern Ireland	-520	-500	-790	0	-460
	Wales	-1,370	-590	-130	0	-470
	UK	-31,050	-17,900	-3,790	0	-6,980

R.5 Placed 18 year old applicants by region of domicile: 13 days after A level results day

Placed 18 year old applicants: change relative to 2016 cycle totals



R.6 Placed 18 year old applicants by region of domicile: 13 days after A level results day

Applicant Status	Domicile	2013	2014	2015	2016	2017
Placed	North East	8,070	7,960	8,450	8,440	8,630
	North West	25,390	26,200	27,190	26,720	26,760
	Yorkshire and The Humber	17,240	18,060	18,810	19,070	19,180
	East Midlands	14,810	15,060	15,560	16,020	16,270
	West Midlands	19,460	20,250	21,200	21,350	21,170
	East of England	20,880	21,420	22,210	22,780	22,930
	London	31,270	32,650	35,340	36,380	37,940
	South East	31,270	32,120	33,850	34,970	35,360
	South West	15,930	16,260	17,430	17,290	17,570
	(England total)	184,310	189,980	200,030	203,020	205,810
	Scotland	14,140	14,310	14,400	14,640	14,640
	Northern Ireland	8,710	8,510	8,420	8,570	8,500
	Wales	9,630	10,030	10,500	10,600	10,250
	UK	216,800	222,830	233,350	236,820	239,200

R.7 Placed 18 year old applicants by region of domicile: 13 days after A level results day

Placed 18 year old applicants: change relative to 2016 cycle totals

Applicant Status	Domicile	2013	2014	2015	2016	2017
Placed	North East	-4%	-6%	0%	0%	2%
	North West	-5%	-2%	2%	0%	0%
	Yorkshire and The Humber	-10%	-5%	-1%	0%	1%
	East Midlands	-8%	-6%	-3%	0%	2%
	West Midlands	-9%	-5%	-1%	0%	-1%
	East of England	-8%	-6%	-3%	0%	1%
	London	-14%	-10%	-3%	0%	4%
	South East	-11%	-8%	-3%	0%	1%
	South West	-8%	-6%	1%	0%	2%
	(England total)	-9%	-6%	-1%	0%	1%
	Scotland	-3%	-2%	-2%	0%	0%
	Northern Ireland	2%	-1%	-2%	0%	-1%
	Wales	-9%	-5%	-1%	0%	-3%
	UK	-8%	-6%	-1%	0%	1%

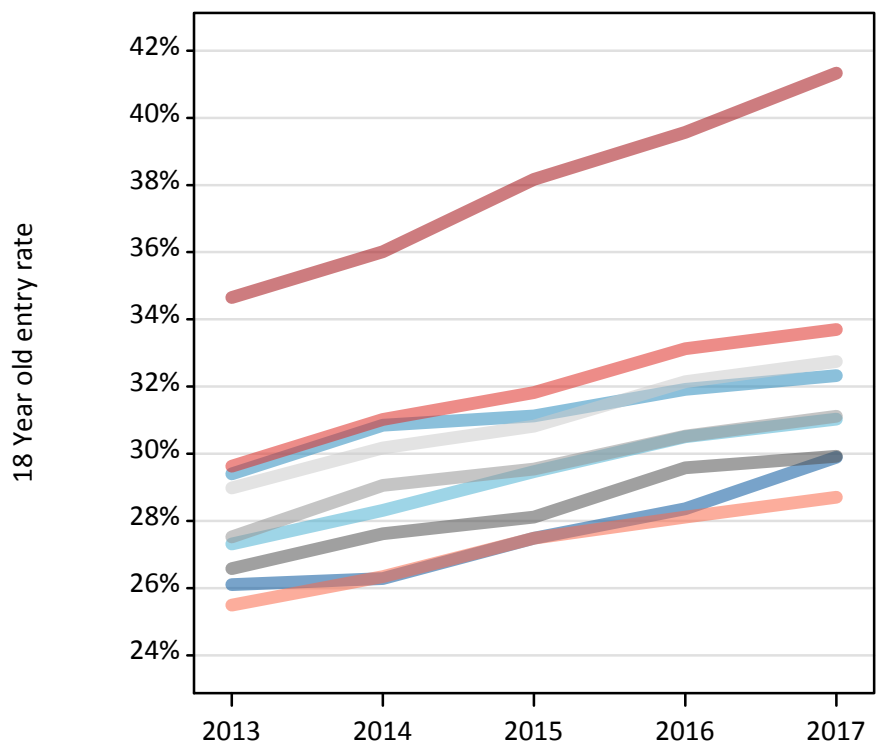
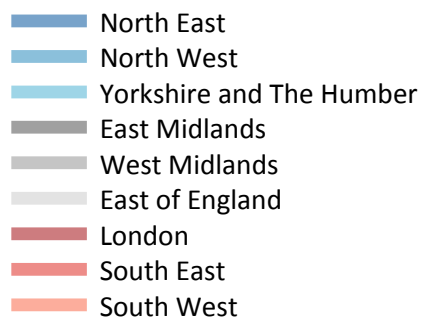
R.8 Placed 18 year old applicants by region of domicile: 13 days after A level results day

Placed 18 year old applicants: absolute change relative to 2016 cycle totals

Applicant Status	Domicile	2013	2014	2015	2016	2017
Placed	North East	-370	-480	10	0	190
	North West	-1,330	-520	480	0	40
	Yorkshire and The Humber	-1,830	-1,000	-260	0	110
	East Midlands	-1,210	-960	-460	0	250
	West Midlands	-1,890	-1,100	-150	0	-180
	East of England	-1,900	-1,360	-570	0	150
	London	-5,110	-3,730	-1,040	0	1,560
	South East	-3,710	-2,860	-1,120	0	390
	South West	-1,360	-1,030	140	0	280
	(England total)	-18,710	-13,040	-2,980	0	2,800
	Scotland	-500	-330	-240	0	0
	Northern Ireland	150	-60	-150	0	-70
	Wales	-960	-570	-100	0	-340
	UK	-20,020	-13,990	-3,470	0	2,380

R.9 Placed 18 year old applicants by region of domicile: 13 days after A level results day

Placed 18 year old applicants: entry rate



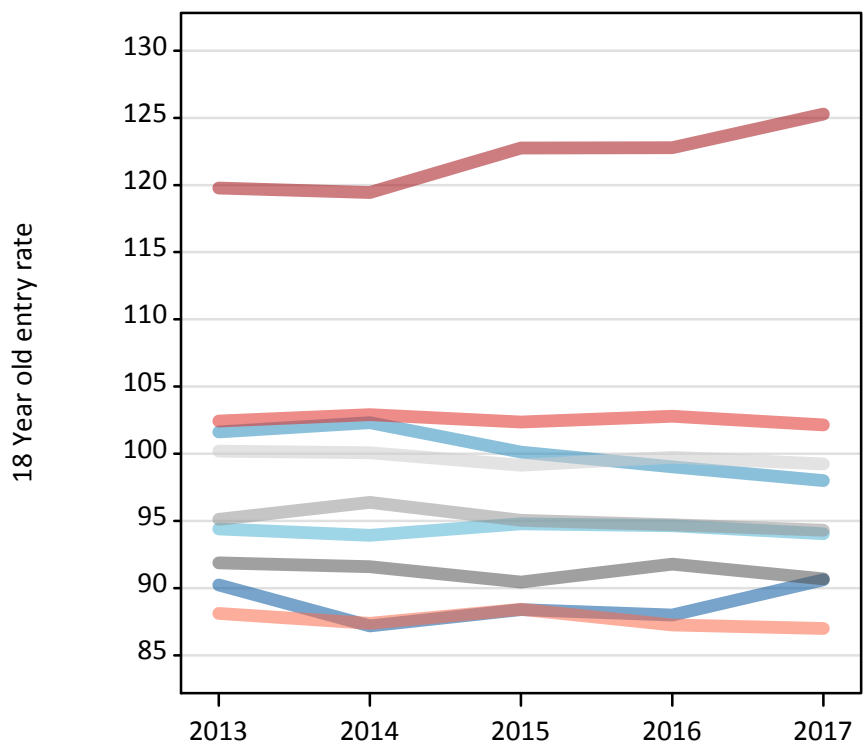
R.10 Placed 18 year old applicants by region of domicile: 13 days after A level results day

Placed 18 year old applicants: entry rate

Applicant Status	Domicile	2013	2014	2015	2016	2017
Placed	North East	26.1%	26.3%	27.5%	28.4%	29.9%
	North West	29.4%	30.8%	31.1%	31.9%	32.3%
	Yorkshire and The Humber	27.3%	28.3%	29.5%	30.5%	31.0%
	East Midlands	26.6%	27.6%	28.1%	29.6%	29.9%
	West Midlands	27.5%	29.1%	29.5%	30.5%	31.1%
	East of England	29.0%	30.2%	30.8%	32.1%	32.7%
	London	34.7%	36.0%	38.2%	39.6%	41.3%
	South East	29.6%	31.0%	31.8%	33.1%	33.7%
	South West	25.5%	26.3%	27.5%	28.1%	28.7%
	(England total)	28.9%	30.1%	31.1%	32.2%	33.0%
	Scotland	23.0%	23.3%	23.9%	24.9%	25.5%
	Northern Ireland	35.6%	35.1%	33.9%	35.0%	35.1%
	Wales	25.5%	26.7%	27.9%	29.2%	28.9%
	UK	28.5%	29.6%	30.5%	31.6%	32.3%

R.11 Placed 18 year old applicants by region of domicile: 13 days after A level results day

Placed 18 year old applicants: entry rates (indexed to 100 = England)



R.12 Placed 18 year old applicants by region of domicile: 13 days after A level results day

Placed 18 year old applicants: entry rate (indexed to 100 = England)

Applicant Status	Domicile	2013	2014	2015	2016	2017
Placed	North East	90	87	88	88	91
	North West	102	102	100	99	98
	Yorkshire and The Humber	94	94	95	95	94
	East Midlands	92	92	90	92	91
	West Midlands	95	96	95	95	94
	East of England	100	100	99	100	99
	London	120	119	123	123	125
	South East	102	103	102	103	102
	South West	88	87	88	87	87
	(England total)	100	100	100	100	100