

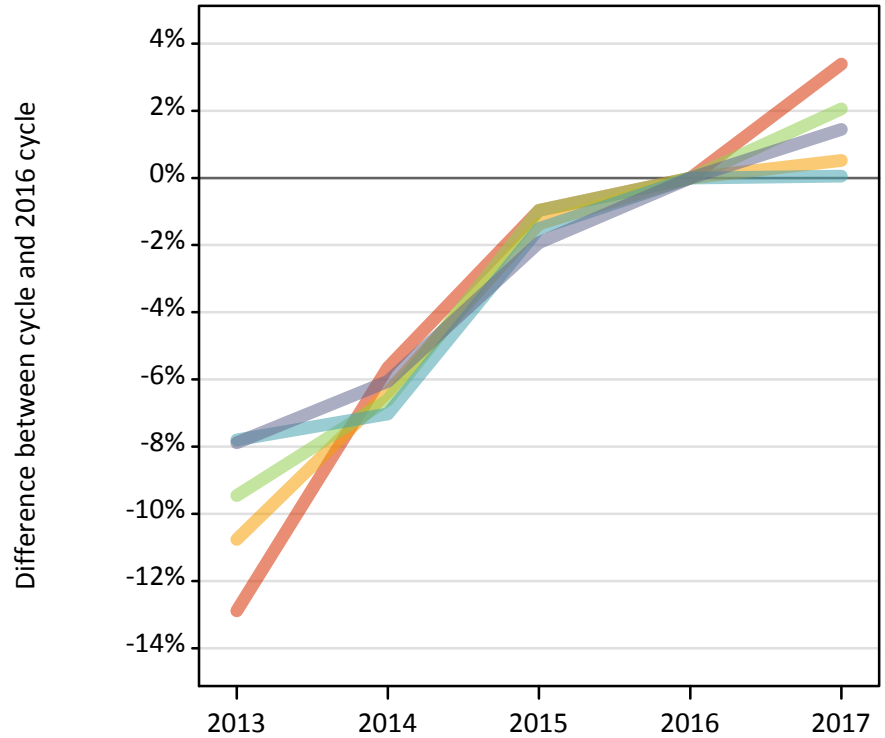
Daily Clearing Analysis: POLAR3

Analysis at 00:05 on Wednesday 30 August 2017 (13 days after A level results day)

P.1 Placed 18 year old applicants from England by POLAR3 quintile: 13 days after A level results day

Placed 18 year old applicants: change relative to 2016 cycle totals

- Quintile 1
- Quintile 2
- Quintile 3
- Quintile 4
- Quintile 5



P.2 Placed 18 year old applicants from England by POLAR3 quintile: 13 days after A level results day

Applicant Status	POLAR3	2013	2014	2015	2016	2017
Placed	Quintile 1	19,370	20,980	22,020	22,240	22,990
	Quintile 2	28,110	29,490	31,070	31,500	31,660
	Quintile 3	36,190	37,330	39,590	39,970	40,800
	Quintile 4	43,270	43,630	46,220	46,930	46,950
	Quintile 5	57,080	58,220	60,780	61,970	62,870

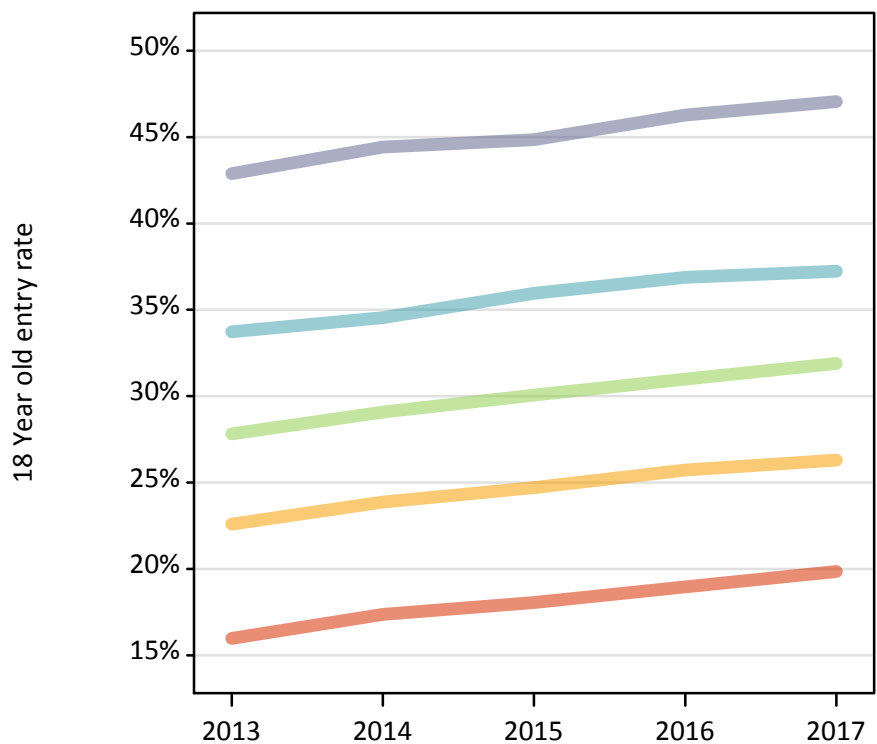
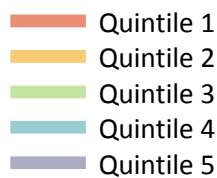
P.3 Placed 18 year old applicants from England by POLAR3 quintile: 13 days after A level results day

Placed 18 year old applicants: change relative to 2016 cycle totals

Applicant Status	POLAR3	2013	2014	2015	2016	2017
Placed	Quintile 1	-13%	-6%	-1%	0%	3%
	Quintile 2	-11%	-6%	-1%	0%	1%
	Quintile 3	-9%	-7%	-1%	0%	2%
	Quintile 4	-8%	-7%	-2%	0%	0%
	Quintile 5	-8%	-6%	-2%	0%	1%

P.4 Placed 18 year old applicants from England by POLAR3 quintile: 13 days after A level results day

Placed 18 year old applicants: entry rate



P.5 Placed 18 year old applicants from England by POLAR3 quintile: 13 days after A level results day

Placed 18 year old applicants: entry rate

Applicant Status	POLAR3	2013	2014	2015	2016	2017
Placed	Quintile 1	16.0%	17.4%	18.1%	19.0%	19.9%
	Quintile 2	22.6%	23.9%	24.7%	25.7%	26.3%
	Quintile 3	27.8%	29.1%	30.1%	31.0%	31.9%
	Quintile 4	33.7%	34.5%	35.9%	36.9%	37.2%
	Quintile 5	42.9%	44.4%	44.8%	46.3%	47.1%

P.6 Placed 18 year old applicants from England by POLAR3 quintile: 13 days after A level results day

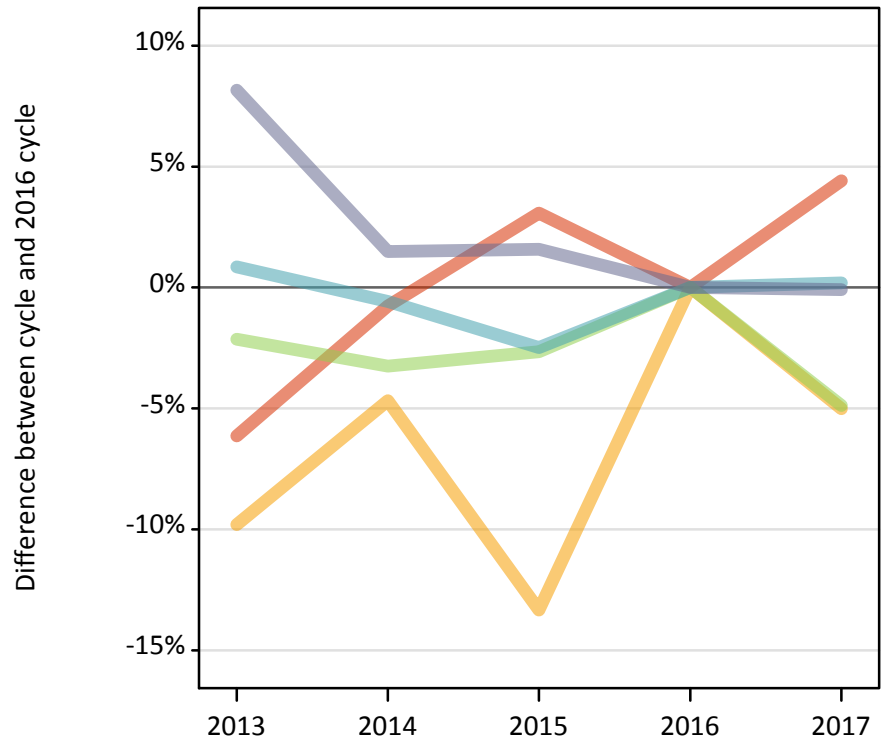
Placed 18 year old applicants: entry rate (indexed to 100 = Quintile 1)

Applicant Status	POLAR3	2013	2014	2015	2016	2017
Placed	Quintile 1	100	100	100	100	100
	Quintile 2	141	137	137	136	132
	Quintile 3	174	167	166	163	161
	Quintile 4	211	199	199	195	187
	Quintile 5	269	256	248	244	237

P.7 Placed 18 year old applicants from Northern Ireland by POLAR3 quintile: 13 days after A level results day

Placed 18 year old applicants: change relative to 2016 cycle totals

- Quintile 1
- Quintile 2
- Quintile 3
- Quintile 4
- Quintile 5



P.8 Placed 18 year old applicants from Northern Ireland by POLAR3 quintile: 13 days after A level results day

Applicant Status	POLAR3	2013	2014	2015	2016	2017
Placed	Quintile 1	490	520	540	520	540
	Quintile 2	790	840	760	880	830
	Quintile 3	1,330	1,310	1,320	1,350	1,290
	Quintile 4	2,610	2,570	2,520	2,580	2,590
	Quintile 5	3,490	3,270	3,280	3,220	3,220

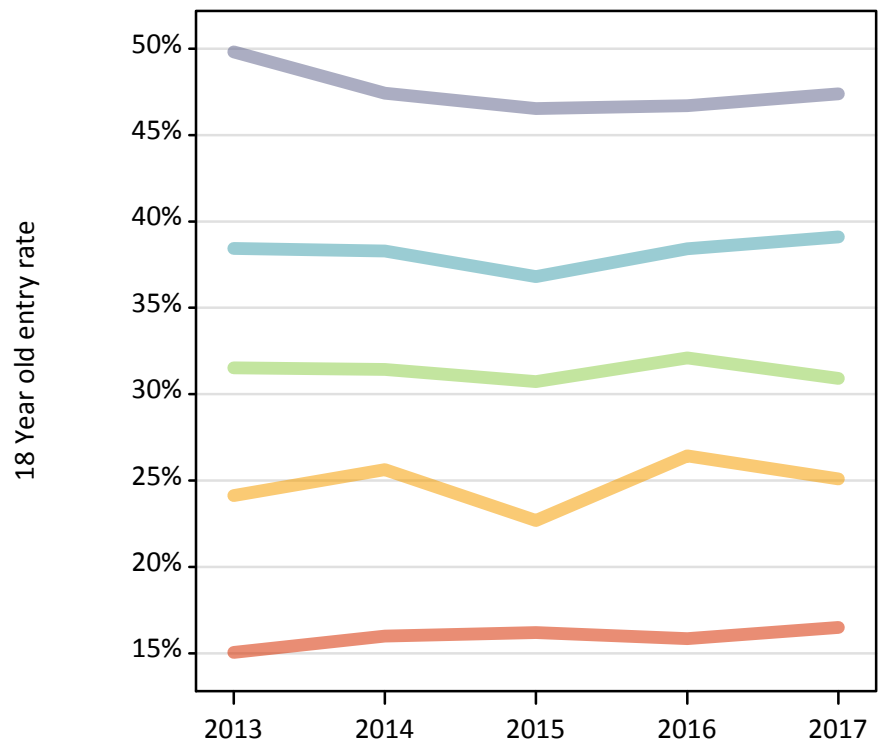
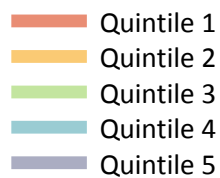
P.9 Placed 18 year old applicants from Northern Ireland by POLAR3 quintile: 13 days after A level results day

Placed 18 year old applicants: change relative to 2016 cycle totals

Applicant Status	POLAR3	2013	2014	2015	2016	2017
Placed	Quintile 1	-6%	-1%	3%	0%	4%
	Quintile 2	-10%	-5%	-13%	0%	-5%
	Quintile 3	-2%	-3%	-3%	0%	-5%
	Quintile 4	1%	-1%	-2%	0%	0%
	Quintile 5	8%	1%	2%	0%	-0%

P.10 Placed 18 year old applicants from Northern Ireland by POLAR3 quintile: 13 days after A level results day

Placed 18 year old applicants: entry rate



P.11 Placed 18 year old applicants from Northern Ireland by POLAR3 quintile: 13 days after A level results day

Placed 18 year old applicants: entry rate

Applicant Status	POLAR3	2013	2014	2015	2016	2017
Placed	Quintile 1	15.0%	16.0%	16.2%	15.8%	16.5%
	Quintile 2	24.1%	25.6%	22.7%	26.4%	25.1%
	Quintile 3	31.5%	31.4%	30.7%	32.1%	30.9%
	Quintile 4	38.4%	38.3%	36.8%	38.4%	39.1%
	Quintile 5	49.8%	47.4%	46.5%	46.7%	47.4%

P.12 Placed 18 year old applicants from Northern Ireland by POLAR3 quintile: 13 days after A level results day

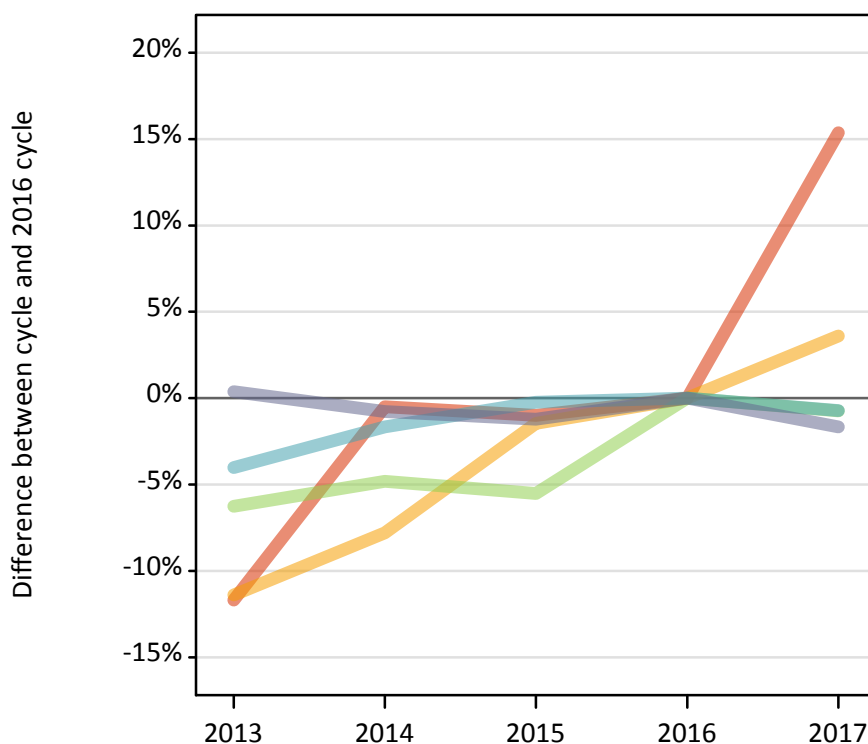
Placed 18 year old applicants: entry rate (indexed to 100 = Quintile 1)

Applicant Status	POLAR3	2013	2014	2015	2016	2017
Placed	Quintile 1	100	100	100	100	100
	Quintile 2	160	160	140	167	152
	Quintile 3	210	197	190	203	187
	Quintile 4	255	239	227	242	237
	Quintile 5	331	297	287	295	287

P.13 Placed 18 year old applicants from Scotland by POLAR3 quintile: 13 days after A level results day

Placed 18 year old applicants: change relative to 2016 cycle totals

- Quintile 1
- Quintile 2
- Quintile 3
- Quintile 4
- Quintile 5



P.14 Placed 18 year old applicants from Scotland by POLAR3 quintile: 13 days after A level results day

Applicant Status	POLAR3	2013	2014	2015	2016	2017
Placed	Quintile 1	530	600	590	600	690
	Quintile 2	1,330	1,380	1,480	1,500	1,560
	Quintile 3	2,160	2,190	2,180	2,300	2,290
	Quintile 4	3,300	3,380	3,430	3,430	3,410
	Quintile 5	6,800	6,730	6,700	6,780	6,670

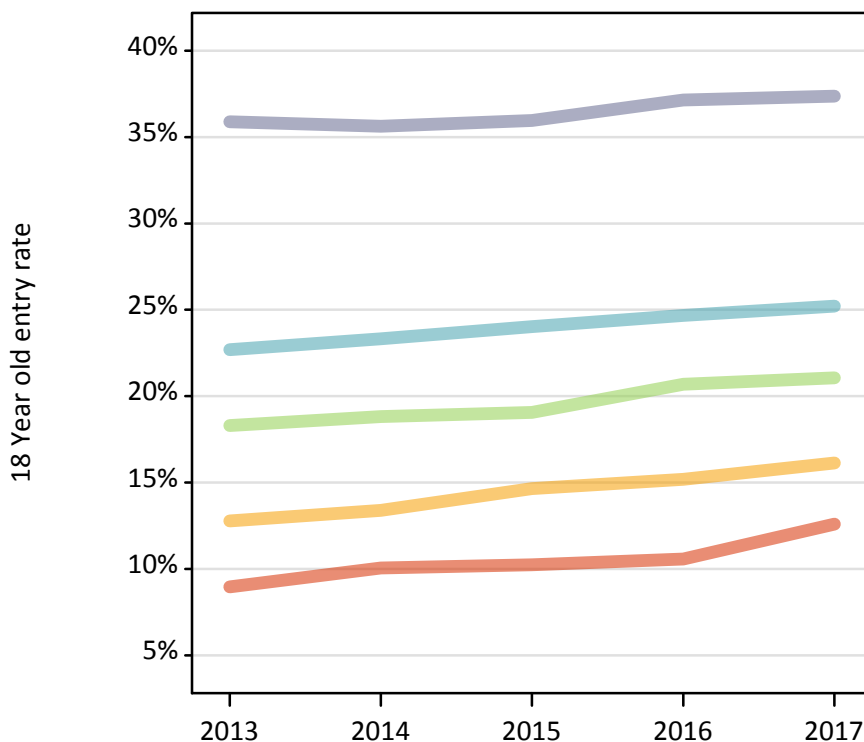
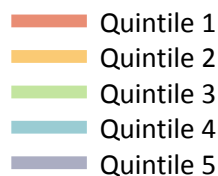
P.15 Placed 18 year old applicants from Scotland by POLAR3 quintile: 13 days after A level results day

Placed 18 year old applicants: change relative to 2016 cycle totals

Applicant Status	POLAR3	2013	2014	2015	2016	2017
Placed	Quintile 1	-12%	-1%	-1%	0%	15%
	Quintile 2	-11%	-8%	-1%	0%	4%
	Quintile 3	-6%	-5%	-6%	0%	-1%
	Quintile 4	-4%	-2%	-0%	0%	-1%
	Quintile 5	0%	-1%	-1%	0%	-2%

P.16 Placed 18 year old applicants from Scotland by POLAR3 quintile: 13 days after A level results day

Placed 18 year old applicants: entry rate



P.17 Placed 18 year old applicants from Scotland by POLAR3 quintile: 13 days after A level results day

Placed 18 year old applicants: entry rate

Applicant Status	POLAR3	2013	2014	2015	2016	2017
Placed	Quintile 1	9.0%	10.0%	10.2%	10.6%	12.6%
	Quintile 2	12.8%	13.4%	14.7%	15.2%	16.1%
	Quintile 3	18.3%	18.8%	19.1%	20.7%	21.1%
	Quintile 4	22.7%	23.3%	24.0%	24.7%	25.2%
	Quintile 5	35.9%	35.6%	36.0%	37.1%	37.4%

P.18 Placed 18 year old applicants from Scotland by POLAR3 quintile: 13 days after A level results day

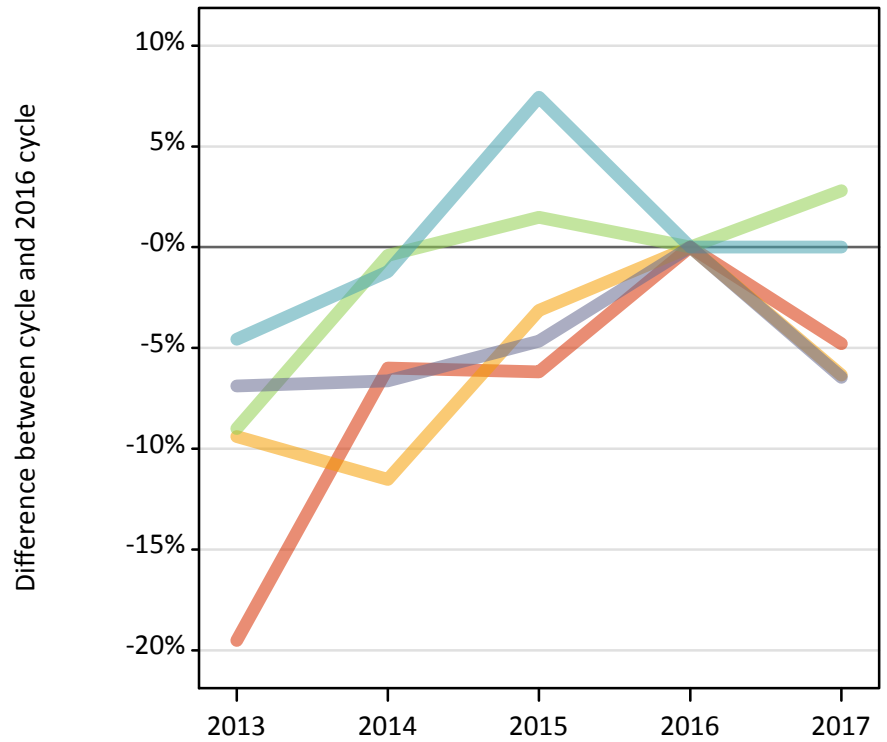
Placed 18 year old applicants: entry rate (indexed to 100 = Quintile 1)

Applicant Status	POLAR3	2013	2014	2015	2016	2017
Placed	Quintile 1	100	100	100	100	100
	Quintile 2	142	133	143	144	128
	Quintile 3	204	187	186	196	167
	Quintile 4	253	232	234	233	200
	Quintile 5	400	355	351	351	296

P.19 Placed 18 year old applicants from Wales by POLAR3 quintile: 13 days after A level results day

Placed 18 year old applicants: change relative to 2016 cycle totals

- Quintile 1
- Quintile 2
- Quintile 3
- Quintile 4
- Quintile 5



P.20 Placed 18 year old applicants from Wales by POLAR3 quintile: 13 days after A level results day

Applicant Status	POLAR3	2013	2014	2015	2016	2017
Placed	Quintile 1	1,260	1,470	1,470	1,570	1,490
	Quintile 2	2,000	1,950	2,140	2,200	2,060
	Quintile 3	1,590	1,740	1,770	1,750	1,800
	Quintile 4	2,130	2,200	2,400	2,230	2,230
	Quintile 5	2,640	2,650	2,700	2,830	2,650

P.21 Placed 18 year old applicants from Wales by POLAR3 quintile: 13 days after A level results day

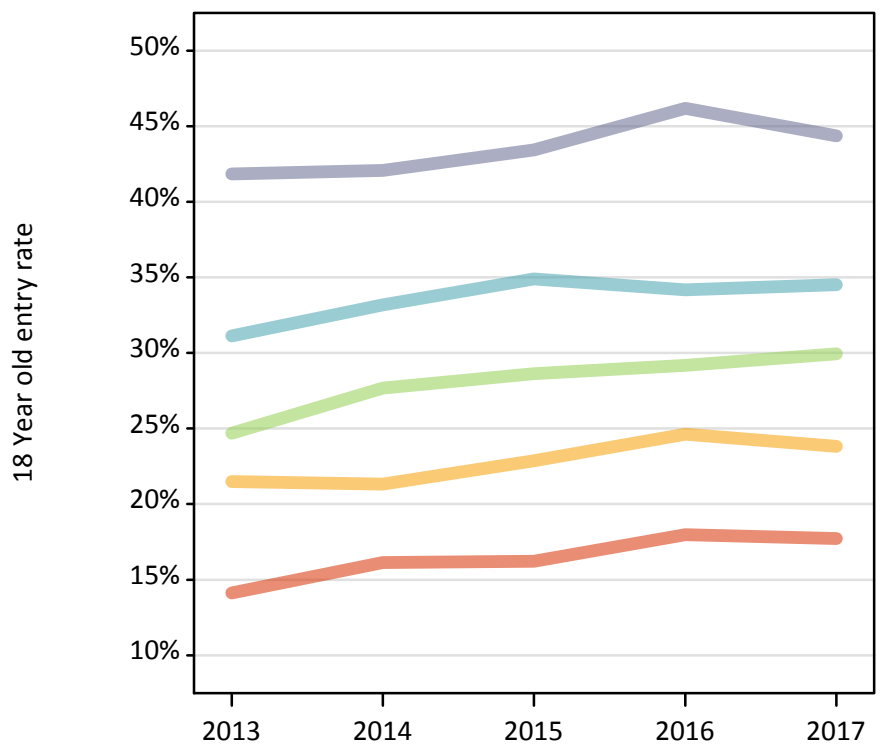
Placed 18 year old applicants: change relative to 2016 cycle totals

Applicant Status	POLAR3	2013	2014	2015	2016	2017
Placed	Quintile 1	-20%	-6%	-6%	0%	-5%
	Quintile 2	-9%	-12%	-3%	0%	-6%
	Quintile 3	-9%	-0%	1%	0%	3%
	Quintile 4	-5%	-1%	7%	0%	0%
	Quintile 5	-7%	-7%	-5%	0%	-6%

P.22 Placed 18 year old applicants from Wales by POLAR3 quintile: 13 days after A level results day

Placed 18 year old applicants: entry rate

- Quintile 1
- Quintile 2
- Quintile 3
- Quintile 4
- Quintile 5



P.23 Placed 18 year old applicants from Wales by POLAR3 quintile: 13 days after A level results day

Placed 18 year old applicants: entry rate

Applicant Status	POLAR3	2013	2014	2015	2016	2017
Placed	Quintile 1	14.1%	16.1%	16.2%	18.0%	17.7%
	Quintile 2	21.5%	21.3%	22.9%	24.6%	23.8%
	Quintile 3	24.7%	27.7%	28.6%	29.2%	29.9%
	Quintile 4	31.1%	33.2%	34.9%	34.2%	34.5%
	Quintile 5	41.8%	42.1%	43.4%	46.2%	44.4%

P.24 Placed 18 year old applicants from Wales by POLAR3 quintile: 13 days after A level results day

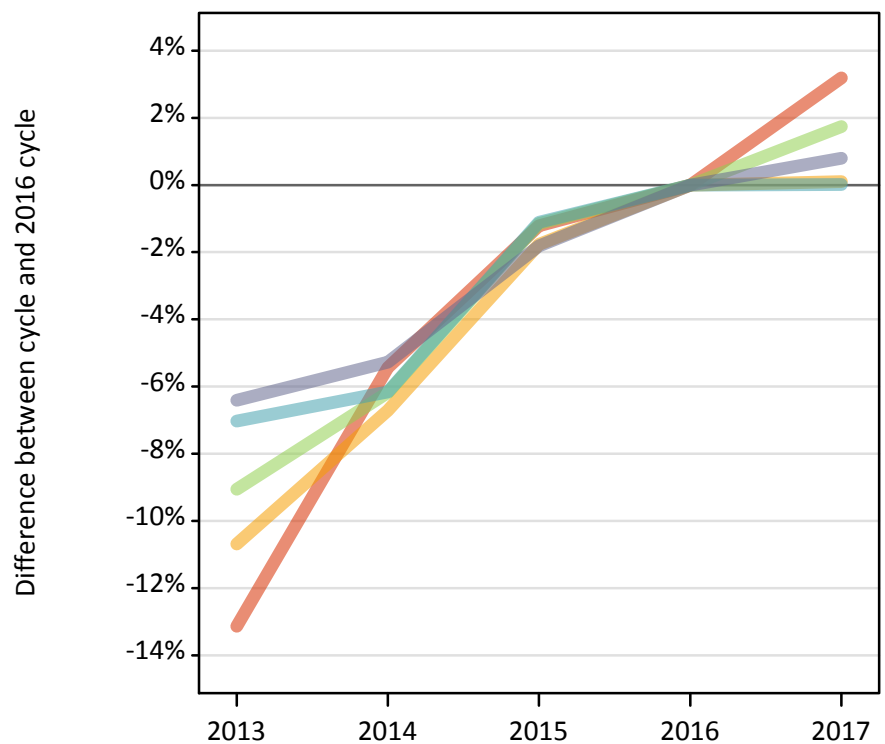
Placed 18 year old applicants: entry rate (indexed to 100 = Quintile 1)

Applicant Status	POLAR3	2013	2014	2015	2016	2017
Placed	Quintile 1	100	100	100	100	100
	Quintile 2	152	132	141	137	134
	Quintile 3	175	172	176	162	169
	Quintile 4	220	206	215	190	195
	Quintile 5	296	261	268	257	250

P.25 Placed 18 year old applicants from the UK by POLAR3 quintile: 13 days after A level results day

Placed 18 year old applicants: change relative to 2016 cycle totals

- Quintile 1
- Quintile 2
- Quintile 3
- Quintile 4
- Quintile 5



P.26 Placed 18 year old applicants from the UK by POLAR3 quintile: 13 days after A level results day

Applicant Status	POLAR3	2013	2014	2015	2016	2017
Placed	Quintile 1	21,650	23,570	24,620	24,930	25,720
	Quintile 2	32,230	33,660	35,440	36,080	36,110
	Quintile 3	41,260	42,570	44,850	45,380	46,160
	Quintile 4	51,300	51,780	54,560	55,170	55,180
	Quintile 5	70,010	70,860	73,450	74,810	75,410

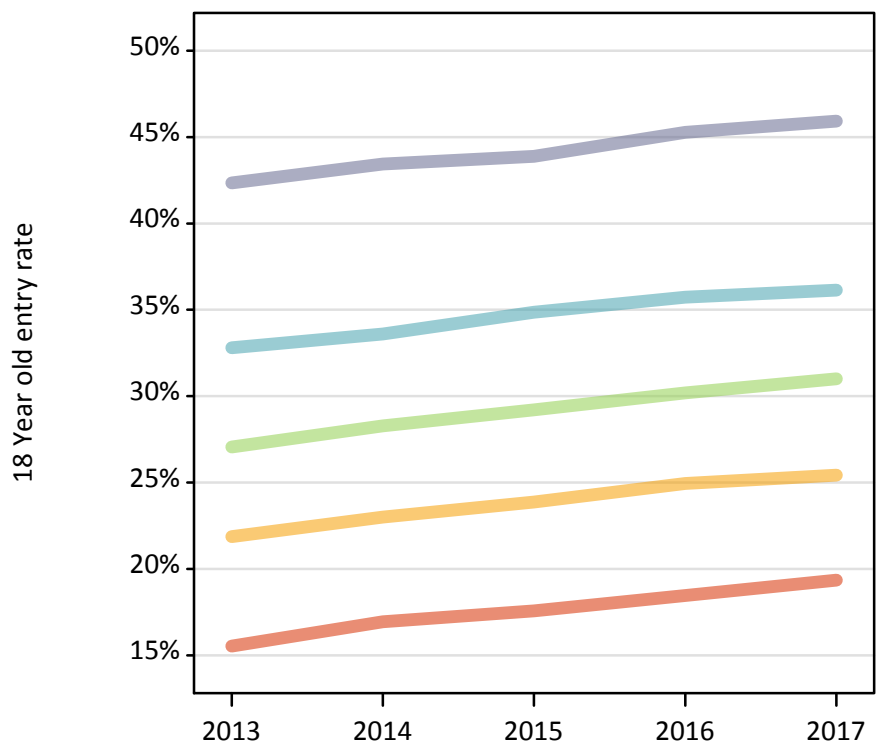
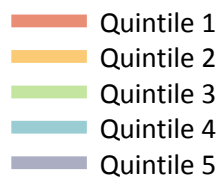
P.27 Placed 18 year old applicants from the UK by POLAR3 quintile: 13 days after A level results day

Placed 18 year old applicants: change relative to 2016 cycle totals

Applicant Status	POLAR3	2013	2014	2015	2016	2017
Placed	Quintile 1	-13%	-5%	-1%	0%	3%
	Quintile 2	-11%	-7%	-2%	0%	0%
	Quintile 3	-9%	-6%	-1%	0%	2%
	Quintile 4	-7%	-6%	-1%	0%	0%
	Quintile 5	-6%	-5%	-2%	0%	1%

P.28 Placed 18 year old applicants from the UK by POLAR3 quintile: 13 days after A level results day

Placed 18 year old applicants: entry rate



P.29 Placed 18 year old applicants from the UK by POLAR3 quintile: 13 days after A level results day

Placed 18 year old applicants: entry rate

Applicant Status	POLAR3	2013	2014	2015	2016	2017
Placed	Quintile 1	15.5%	16.9%	17.6%	18.5%	19.3%
	Quintile 2	21.9%	23.0%	23.9%	24.9%	25.4%
	Quintile 3	27.1%	28.3%	29.2%	30.2%	31.0%
	Quintile 4	32.8%	33.6%	34.9%	35.7%	36.1%
	Quintile 5	42.3%	43.4%	43.9%	45.3%	45.9%

P.30 Placed 18 year old applicants from the UK by POLAR3 quintile: 13 days after A level results day

Placed 18 year old applicants: entry rate (indexed to 100 = Quintile 1)

Applicant Status	POLAR3	2013	2014	2015	2016	2017
Placed	Quintile 1	100	100	100	100	100
	Quintile 2	141	136	136	135	131
	Quintile 3	174	167	166	163	160
	Quintile 4	211	198	198	194	187
	Quintile 5	273	257	250	245	237