

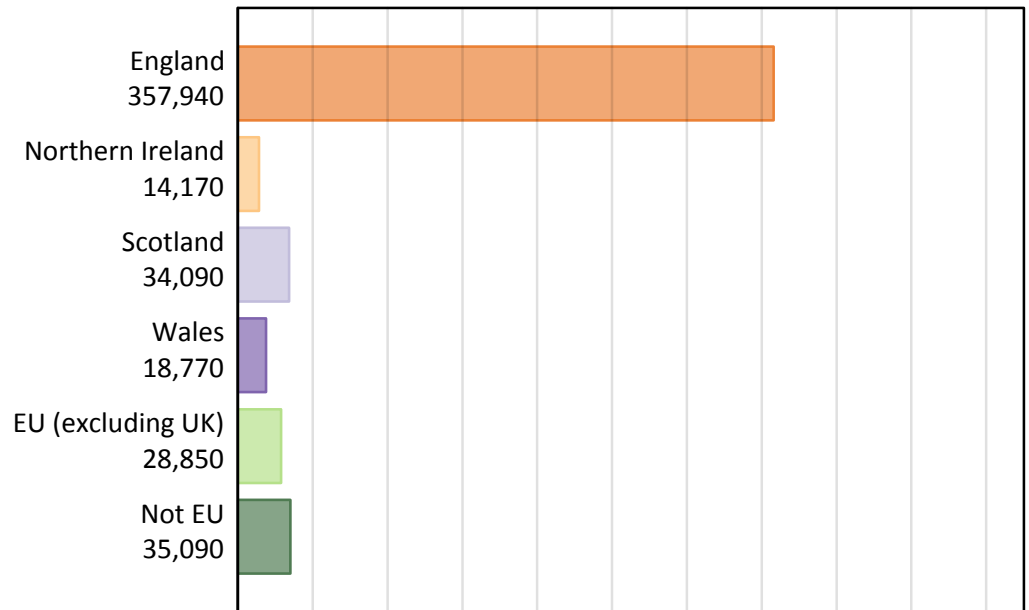
Daily Clearing Analysis: Country

Analysis at 00:05 on Wednesday 30 August 2017 (13 days after A level results day)

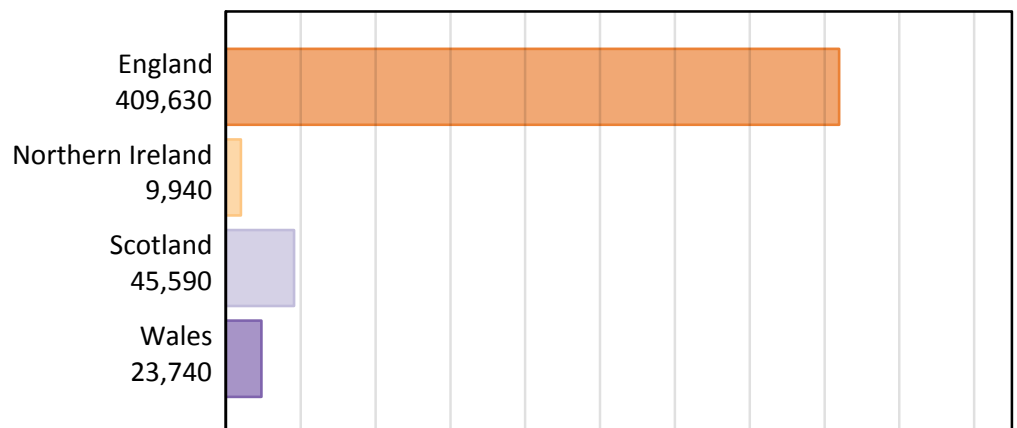
B.1 Placed applicants by country of provider and domicile, 2017 cycle

Domicile of applicant	Country of provider				
	England	Northern Ireland	Scotland	Wales	UK
England	342,180	330	5,030	10,390	357,940
Northern Ireland	3,900	8,990	1,110	170	14,170
Scotland	1,570	30	32,440	50	34,090
Wales	7,980	10	130	10,650	18,770
EU (excluding UK)	23,040	370	4,030	1,410	28,850
Not EU	30,950	210	2,860	1,070	35,090
All	409,630	9,940	45,590	23,740	488,900

B.2 Placed applicants by domicile group

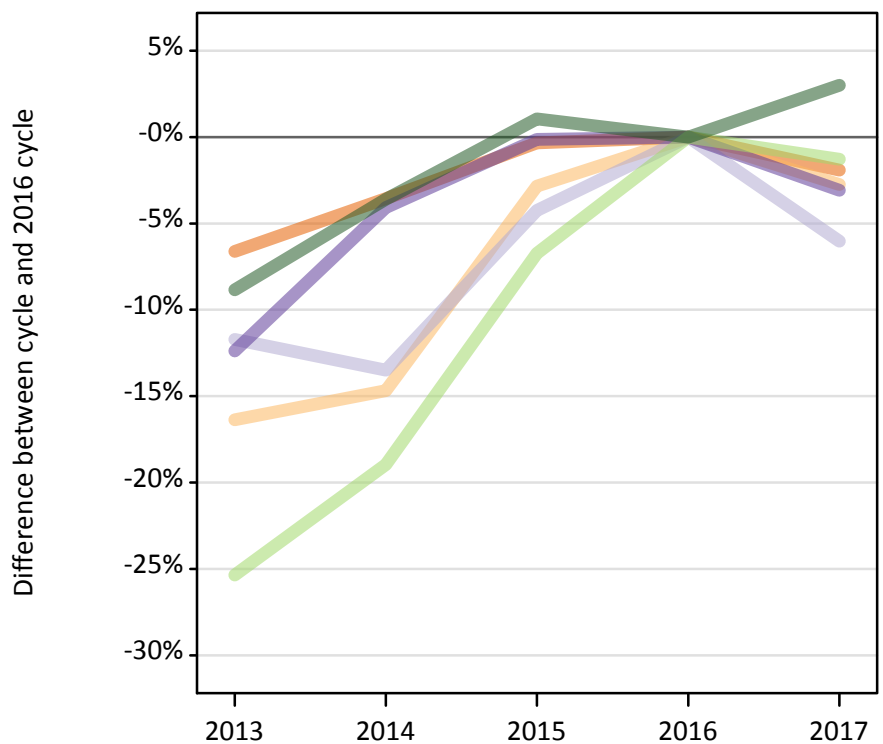
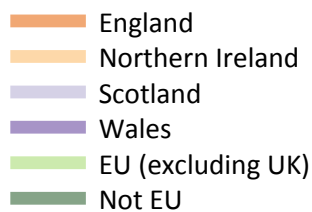


B.3 Placed applicants by country of provider



B.4 Placed applicants at 13 days after A level results day: providers in England

Selected applicant domiciles: difference between cycle and 2016 cycle (at 13 days after A level results day)



B.5 Placed applicants at 13 days after A level results day: providers in England

Placed applicants by domicile (at 13 days after A level results day)

Domicile of applicant	2013	2014	2015	2016	2017
England	325,750	336,400	347,660	348,850	342,180
Northern Ireland	3,350	3,420	3,890	4,010	3,900
Scotland	1,480	1,450	1,600	1,670	1,570
Wales	7,220	7,900	8,230	8,240	7,980
EU (excluding UK)	17,430	18,920	21,770	23,340	23,040
Not EU	27,390	28,970	30,370	30,050	30,950

B.6 Placed applicants at 13 days after A level results day: providers in England

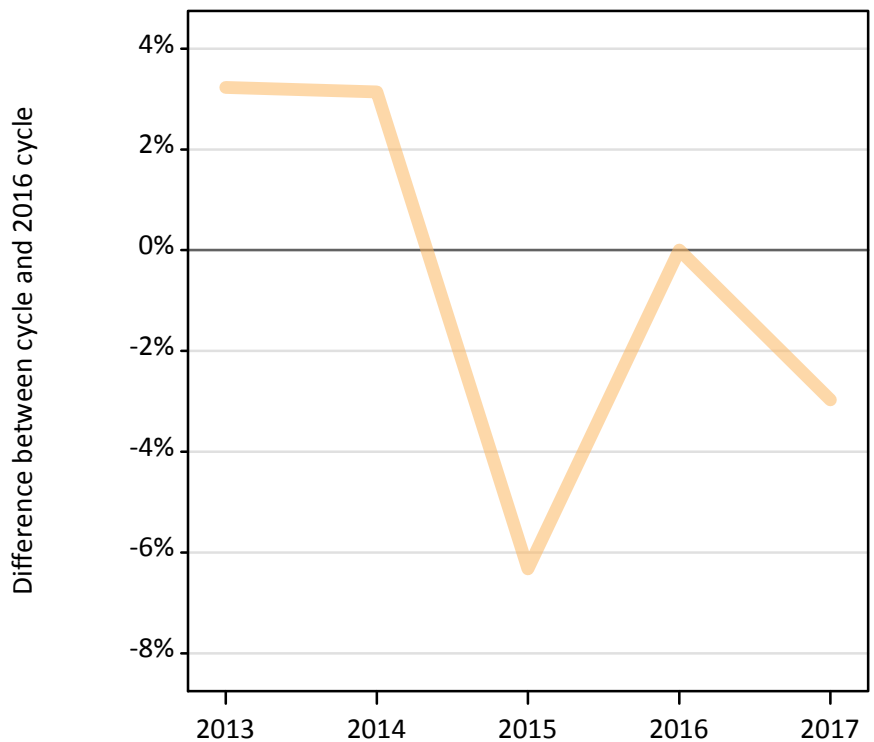
Selected applicant domiciles: difference between cycle and 2016 cycle (at 13 days after A level results day)

Domicile of applicant	2013	2014	2015	2016	2017
England	-7%	-4%	-0%	0%	-2%
Northern Ireland	-16%	-15%	-3%	0%	-3%
Scotland	-12%	-14%	-4%	0%	-6%
Wales	-12%	-4%	-0%	0%	-3%
EU (excluding UK)	-25%	-19%	-7%	0%	-1%
Not EU	-9%	-4%	1%	0%	3%

B.7 Placed applicants at 13 days after A level results day: providers in Northern Ireland

Selected applicant domiciles: difference between cycle and 2016 cycle (at 13 days after A level results day)

— Northern Ireland



B.8 Placed applicants at 13 days after A level results day: providers in Northern Ireland

Placed applicants by domicile (at 13 days after A level results day)

Domicile of applicant	2013	2014	2015	2016	2017
England	260	440	570	320	330
Northern Ireland	9,560	9,550	8,680	9,260	8,990
Scotland	10	20	20	20	30
Wales	10	10	10	10	10
EU (excluding UK)	450	470	410	350	370
Not EU	180	180	170	230	210

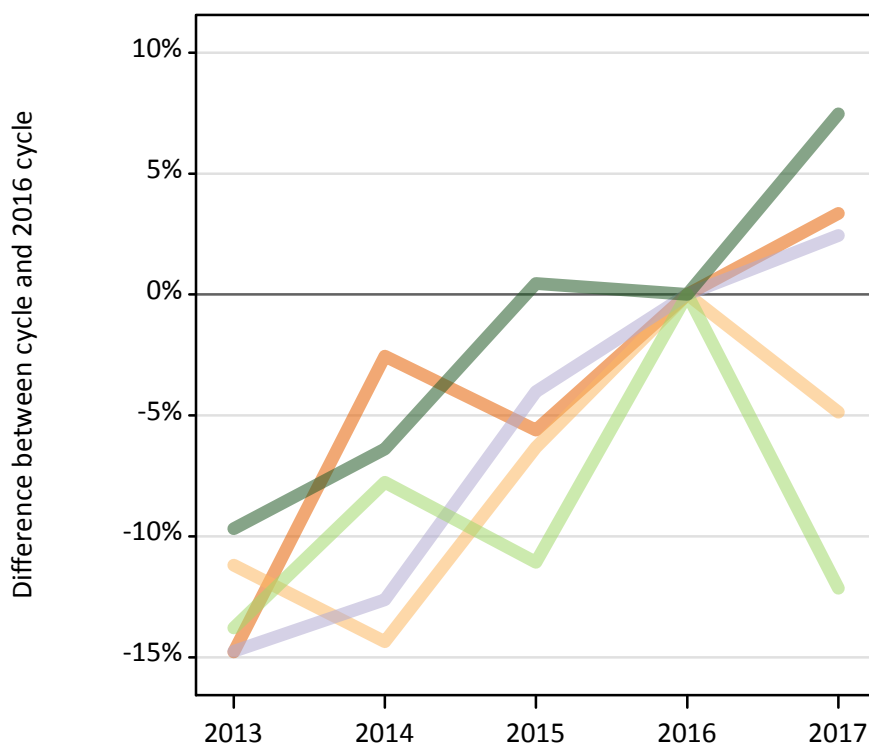
B.9 Placed applicants at 13 days after A level results day: providers in Northern Ireland

Selected applicant domiciles: difference between cycle and 2016 cycle (at 13 days after A level results day)

Domicile of applicant	2013	2014	2015	2016	2017
Northern Ireland	3%	3%	-6%	0%	-3%

B.10 Placed applicants at 13 days after A level results day: providers in Scotland

Selected applicant domiciles: difference between cycle and 2016 cycle (at 13 days after A level results day)



B.11 Placed applicants at 13 days after A level results day: providers in Scotland

Placed applicants by domicile (at 13 days after A level results day)

Domicile of applicant	2013	2014	2015	2016	2017
England	4,150	4,740	4,590	4,870	5,030
Northern Ireland	1,040	1,000	1,100	1,170	1,110
Scotland	26,990	27,670	30,390	31,660	32,440
Wales	110	110	120	140	130
EU (excluding UK)	3,950	4,230	4,080	4,590	4,030
Not EU	2,410	2,490	2,680	2,660	2,860

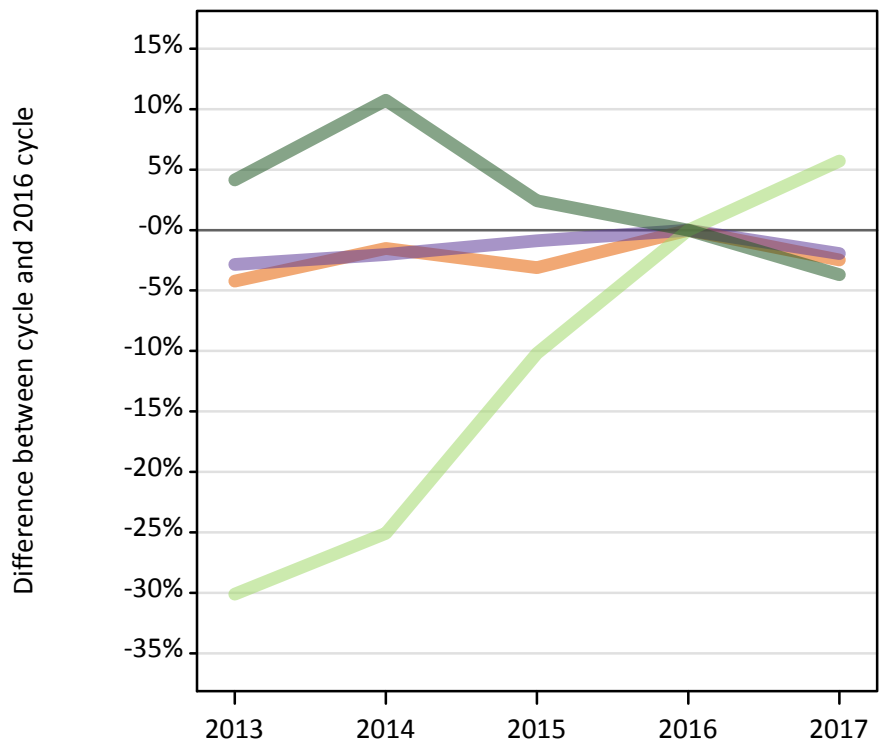
B.12 Placed applicants at 13 days after A level results day: providers in Scotland

Selected applicant domiciles: difference between cycle and 2016 cycle (at 13 days after A level results day)

Domicile of applicant	2013	2014	2015	2016	2017
England	-15%	-3%	-6%	0%	3%
Northern Ireland	-11%	-14%	-6%	0%	-5%
Scotland	-15%	-13%	-4%	0%	2%
EU (excluding UK)	-14%	-8%	-11%	0%	-12%
Not EU	-10%	-6%	0%	0%	7%

B.13 Placed applicants at 13 days after A level results day: providers in Wales

Selected applicant domiciles: difference between cycle and 2016 cycle (at 13 days after A level results day)



B.14 Placed applicants at 13 days after A level results day: providers in Wales

Placed applicants by domicile (at 13 days after A level results day)

Domicile of applicant	2013	2014	2015	2016	2017
England	10,210	10,490	10,330	10,660	10,390
Northern Ireland	160	150	170	190	170
Scotland	60	60	50	50	50
Wales	10,550	10,640	10,770	10,860	10,650
EU (excluding UK)	930	1,000	1,200	1,330	1,410
Not EU	1,160	1,230	1,140	1,110	1,070

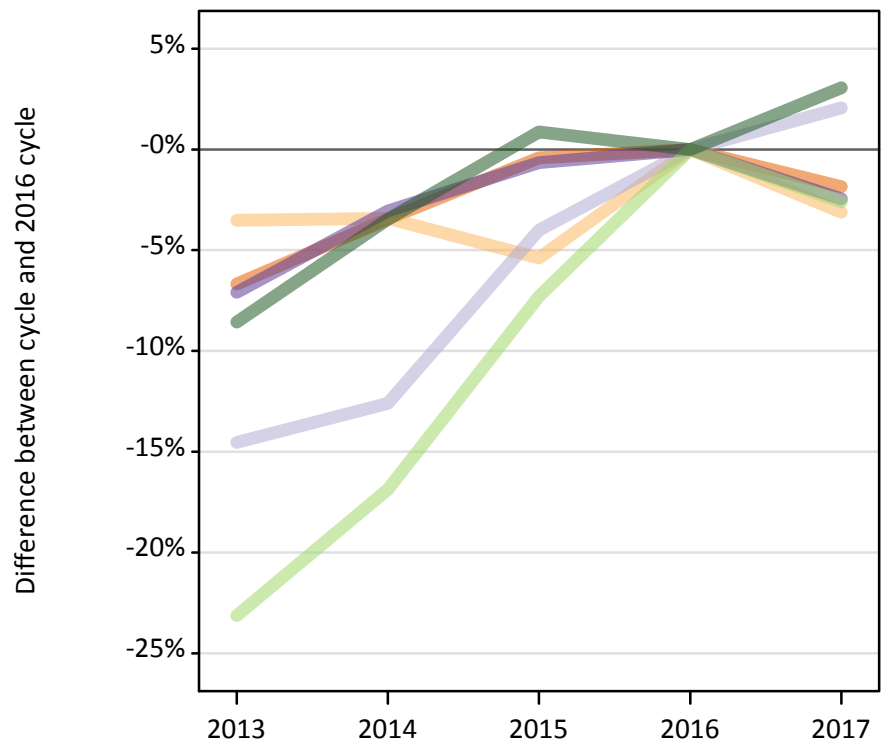
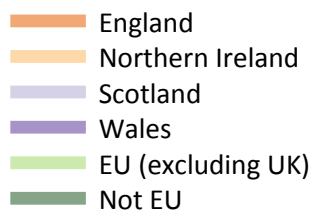
B.15 Placed applicants at 13 days after A level results day: providers in Wales

Selected applicant domiciles: difference between cycle and 2016 cycle (at 13 days after A level results day)

Domicile of applicant	2013	2014	2015	2016	2017
England	-4%	-2%	-3%	0%	-2%
Wales	-3%	-2%	-1%	0%	-2%
EU (excluding UK)	-30%	-25%	-10%	0%	6%
Not EU	4%	11%	2%	0%	-4%

B.16 Placed applicants at 13 days after A level results day: providers in the UK

Selected applicant domiciles: difference between cycle and 2016 cycle (at 13 days after A level results day)



B.17 Placed applicants at 13 days after A level results day: providers in the UK

Placed applicants by domicile (at 13 days after A level results day)

Domicile of applicant	2013	2014	2015	2016	2017
England	340,360	352,080	363,150	364,680	357,940
Northern Ireland	14,110	14,120	13,840	14,620	14,170
Scotland	28,550	29,190	32,060	33,400	34,090
Wales	17,880	18,660	19,120	19,250	18,770
EU (excluding UK)	22,760	24,610	27,450	29,610	28,850
Not EU	31,130	32,870	34,340	34,050	35,090

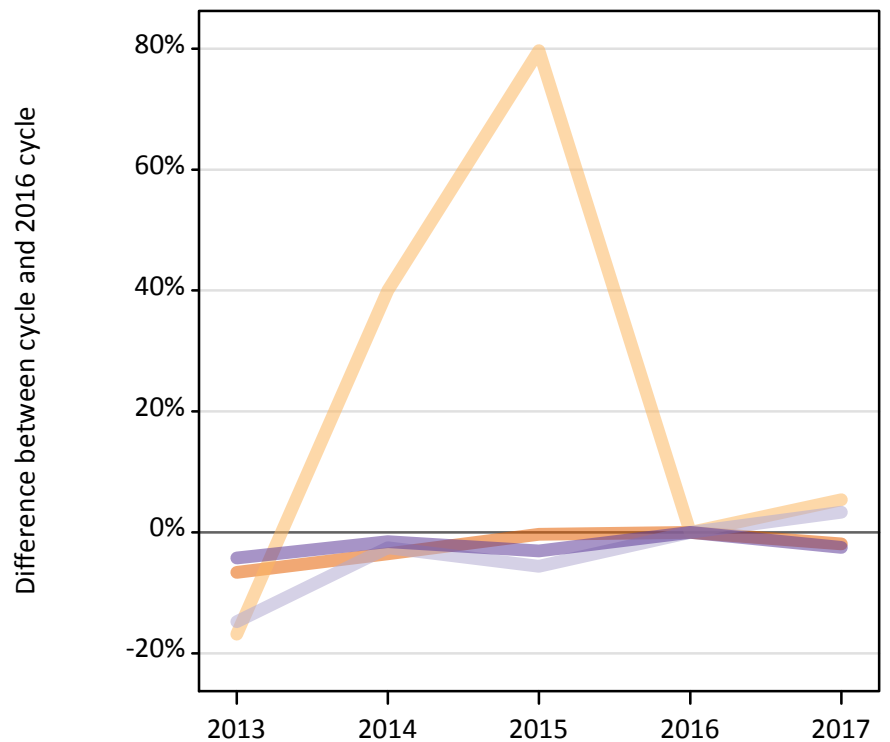
B.18 Placed applicants at 13 days after A level results day: providers in the UK

Selected applicant domiciles: difference between cycle and 2016 cycle (at 13 days after A level results day)

Domicile of applicant	2013	2014	2015	2016	2017
England	-7%	-3%	-0%	0%	-2%
Northern Ireland	-4%	-3%	-5%	0%	-3%
Scotland	-15%	-13%	-4%	0%	2%
Wales	-7%	-3%	-1%	0%	-2%
EU (excluding UK)	-23%	-17%	-7%	0%	-3%
Not EU	-9%	-3%	1%	0%	3%

B.19 Placed applicants at 13 days after A level results day: domiciled in England

Selected provider countries: difference between cycle and 2016 cycle (at 13 days after A level results day)



B.20 Placed applicants at 13 days after A level results day: domiciled in England

Placed applicants by provider country (at 13 days after A level results day)

Country of provider	2013	2014	2015	2016	2017
England	325,750	336,400	347,660	348,850	342,180
Northern Ireland	260	440	570	320	330
Scotland	4,150	4,740	4,590	4,870	5,030
Wales	10,210	10,490	10,330	10,660	10,390

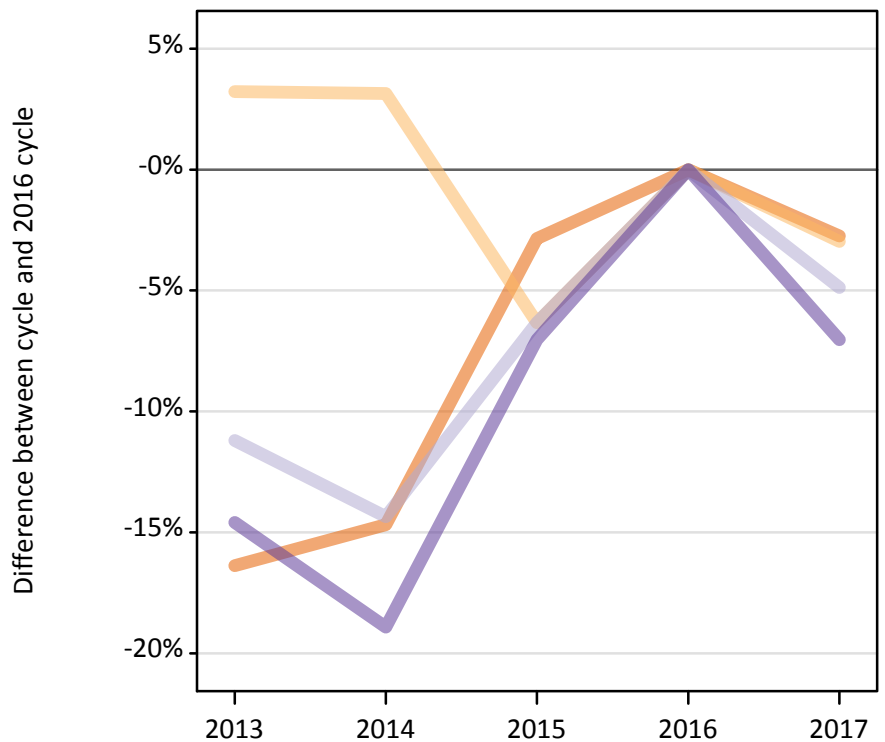
B.21 Placed applicants at 13 days after A level results day: domiciled in England

Selected provider countries: difference between cycle and 2016 cycle (at 13 days after A level results day)

Country of provider	2013	2014	2015	2016	2017
England	-7%	-4%	-0%	0%	-2%
Northern Ireland	-17%	40%	80%	0%	5%
Scotland	-15%	-3%	-6%	0%	3%
Wales	-4%	-2%	-3%	0%	-2%

B.22 Placed applicants at 13 days after A level results day: domiciled in Northern Ireland

Selected provider countries: difference between cycle and 2016 cycle (at 13 days after A level results day)



B.23 Placed applicants at 13 days after A level results day: domiciled in Northern Ireland

Placed applicants by provider country (at 13 days after A level results day)

Country of provider	2013	2014	2015	2016	2017
England	3,350	3,420	3,890	4,010	3,900
Northern Ireland	9,560	9,550	8,680	9,260	8,990
Scotland	1,040	1,000	1,100	1,170	1,110
Wales	160	150	170	190	170

B.24 Placed applicants at 13 days after A level results day: domiciled in Northern Ireland

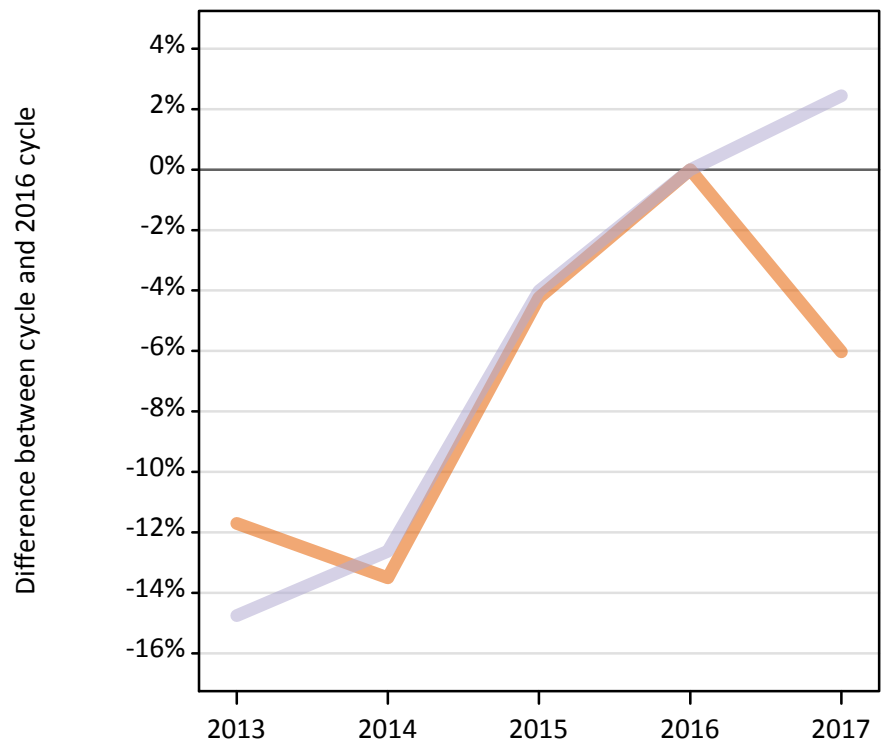
Selected provider countries: difference between cycle and 2016 cycle (at 13 days after A level results day)

Country of provider	2013	2014	2015	2016	2017
England	-16%	-15%	-3%	0%	-3%
Northern Ireland	3%	3%	-6%	0%	-3%
Scotland	-11%	-14%	-6%	0%	-5%
Wales	-15%	-19%	-7%	0%	-7%

B.25 Placed applicants at 13 days after A level results day: domiciled in Scotland

Selected provider countries: difference between cycle and 2016 cycle (at 13 days after A level results day)

— England
— Scotland



B.26 Placed applicants at 13 days after A level results day: domiciled in Scotland

Placed applicants by provider country (at 13 days after A level results day)

Country of provider	2013	2014	2015	2016	2017
England	1,480	1,450	1,600	1,670	1,570
Northern Ireland	10	20	20	20	30
Scotland	26,990	27,670	30,390	31,660	32,440
Wales	60	60	50	50	50

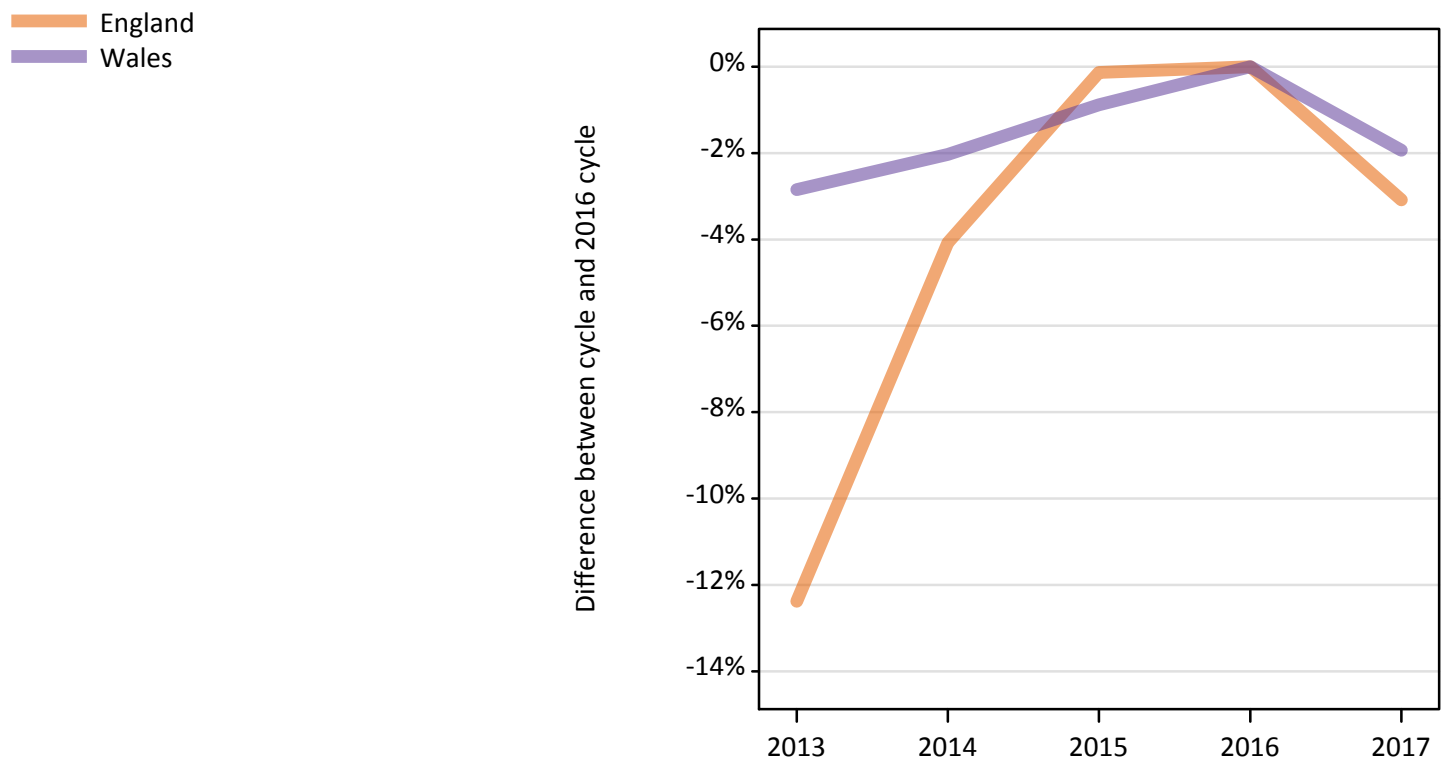
B.27 Placed applicants at 13 days after A level results day: domiciled in Scotland

Selected provider countries: difference between cycle and 2016 cycle (at 13 days after A level results day)

Country of provider	2013	2014	2015	2016	2017
England	-12%	-14%	-4%	0%	-6%
Scotland	-15%	-13%	-4%	0%	2%

B.28 Placed applicants at 13 days after A level results day: domiciled in Wales

Selected provider countries: difference between cycle and 2016 cycle (at 13 days after A level results day)



B.29 Placed applicants at 13 days after A level results day: domiciled in Wales

Placed applicants by provider country (at 13 days after A level results day)

Country of provider	2013	2014	2015	2016	2017
England	7,220	7,900	8,230	8,240	7,980
Northern Ireland	10	10	10	10	10
Scotland	110	110	120	140	130
Wales	10,550	10,640	10,770	10,860	10,650

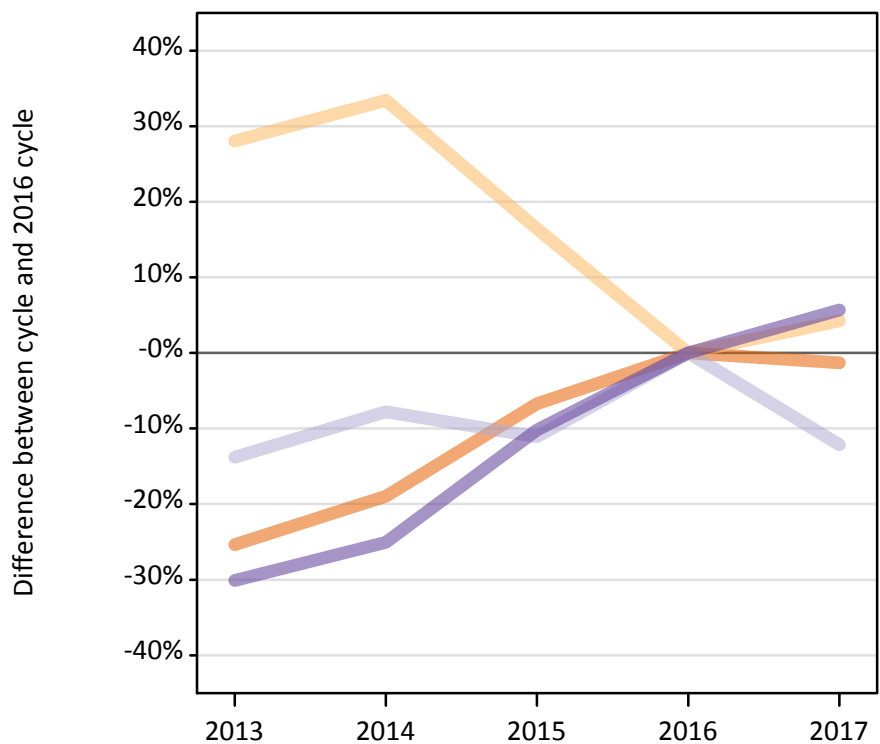
B.30 Placed applicants at 13 days after A level results day: domiciled in Wales

Selected provider countries: difference between cycle and 2016 cycle (at 13 days after A level results day)

Country of provider	2013	2014	2015	2016	2017
England	-12%	-4%	-0%	0%	-3%
Wales	-3%	-2%	-1%	0%	-2%

B.31 Placed applicants at 13 days after A level results day: domiciled in EU (excluding UK)

Selected provider countries: difference between cycle and 2016 cycle (at 13 days after A level results day)



B.32 Placed applicants at 13 days after A level results day: domiciled in EU (excluding UK)

Placed applicants by provider country (at 13 days after A level results day)

Country of provider	2013	2014	2015	2016	2017
England	17,430	18,920	21,770	23,340	23,040
Northern Ireland	450	470	410	350	370
Scotland	3,950	4,230	4,080	4,590	4,030
Wales	930	1,000	1,200	1,330	1,410

B.33 Placed applicants at 13 days after A level results day: domiciled in EU (excluding UK)

Selected provider countries: difference between cycle and 2016 cycle (at 13 days after A level results day)

Country of provider	2013	2014	2015	2016	2017
England	-25%	-19%	-7%	0%	-1%
Northern Ireland	28%	33%	16%	0%	4%
Scotland	-14%	-8%	-11%	0%	-12%
Wales	-30%	-25%	-10%	0%	6%

B.34 Placed applicants at 13 days after A level results day: domiciled in Not EU

Selected provider countries: difference between cycle and 2016 cycle (at 13 days after A level results day)



B.35 Placed applicants at 13 days after A level results day: domiciled in Not EU

Placed applicants by provider country (at 13 days after A level results day)

Country of provider	2013	2014	2015	2016	2017
England	27,390	28,970	30,370	30,050	30,950
Northern Ireland	180	180	170	230	210
Scotland	2,410	2,490	2,680	2,660	2,860
Wales	1,160	1,230	1,140	1,110	1,070

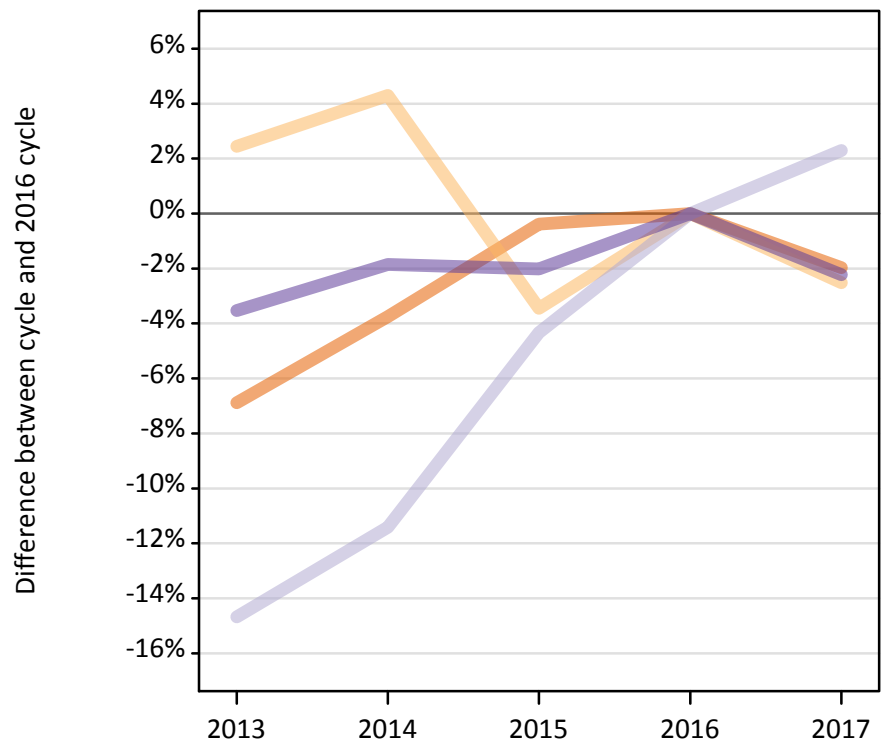
B.36 Placed applicants at 13 days after A level results day: domiciled in Not EU

Selected provider countries: difference between cycle and 2016 cycle (at 13 days after A level results day)

Country of provider	2013	2014	2015	2016	2017
England	-9%	-4%	1%	0%	3%
Northern Ireland	-19%	-19%	-26%	0%	-7%
Scotland	-10%	-6%	0%	0%	7%
Wales	4%	11%	2%	0%	-4%

B.37 Placed applicants at 13 days after A level results day: domiciled in UK

Selected provider countries: difference between cycle and 2016 cycle (at 13 days after A level results day)



B.38 Placed applicants at 13 days after A level results day: domiciled in UK

Placed applicants by provider country (at 13 days after A level results day)

Country of provider	2013	2014	2015	2016	2017
England	337,800	349,170	361,380	362,760	355,640
Northern Ireland	9,840	10,020	9,270	9,610	9,360
Scotland	32,280	33,520	36,190	37,830	38,700
Wales	20,980	21,350	21,310	21,750	21,260

B.39 Placed applicants at 13 days after A level results day: domiciled in UK

Selected provider countries: difference between cycle and 2016 cycle (at 13 days after A level results day)

Country of provider	2013	2014	2015	2016	2017
England	-7%	-4%	-0%	0%	-2%
Northern Ireland	2%	4%	-3%	0%	-3%
Scotland	-15%	-11%	-4%	0%	2%
Wales	-4%	-2%	-2%	0%	-2%