

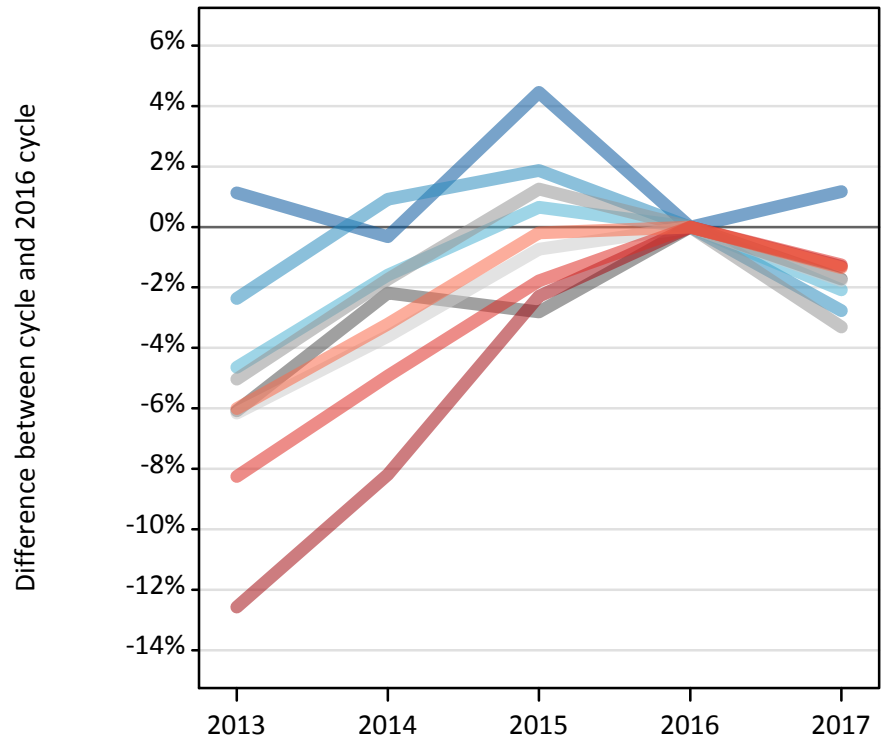
Daily Clearing Analysis: Region

Analysis at 00:05 on Tuesday 29 August 2017 (12 days after A level results day)

R.1 Placed applicants by region of domicile: 12 days after A level results day

Placed applicants: change relative to 2016 cycle totals

- North East
- North West
- Yorkshire and The Humber
- East Midlands
- West Midlands
- East of England
- London
- South East
- South West



R.2 Placed applicants by region of domicile: 12 days after A level results day

Applicant Status	Domicile	2013	2014	2015	2016	2017
Placed	North East	15,270	15,050	15,770	15,100	15,280
	North West	45,990	47,540	47,990	47,110	45,810
	Yorkshire and The Humber	31,520	32,530	33,270	33,060	32,370
	East Midlands	26,480	27,580	27,400	28,190	27,710
	West Midlands	36,250	37,510	38,650	38,170	36,910
	East of England	35,340	36,290	37,380	37,660	36,990
	London	61,730	64,830	68,990	70,610	69,690
	South East	54,520	56,500	58,370	59,430	58,690
	South West	31,390	32,320	33,330	33,400	32,950
	(England total)	338,490	350,140	361,150	362,720	356,380
	Scotland	28,460	29,110	31,960	33,300	34,020
	Northern Ireland	14,000	14,040	13,730	14,600	14,090
	Wales	17,800	18,570	19,010	19,140	18,690
	UK	398,750	411,860	425,850	429,750	423,190

R.3 Placed applicants by region of domicile: 12 days after A level results day

Placed applicants: change relative to 2016 cycle totals

Applicant Status	Domicile	2013	2014	2015	2016	2017
Placed	North East	1%	-0%	4%	0%	1%
	North West	-2%	1%	2%	0%	-3%
	Yorkshire and The Humber	-5%	-2%	1%	0%	-2%
	East Midlands	-6%	-2%	-3%	0%	-2%
	West Midlands	-5%	-2%	1%	0%	-3%
	East of England	-6%	-4%	-1%	0%	-2%
	London	-13%	-8%	-2%	0%	-1%
	South East	-8%	-5%	-2%	0%	-1%
	South West	-6%	-3%	-0%	0%	-1%
	(England total)	-7%	-3%	-0%	0%	-2%
	Scotland	-15%	-13%	-4%	0%	2%
	Northern Ireland	-4%	-4%	-6%	0%	-3%
	Wales	-7%	-3%	-1%	0%	-2%
	UK	-7%	-4%	-1%	0%	-2%

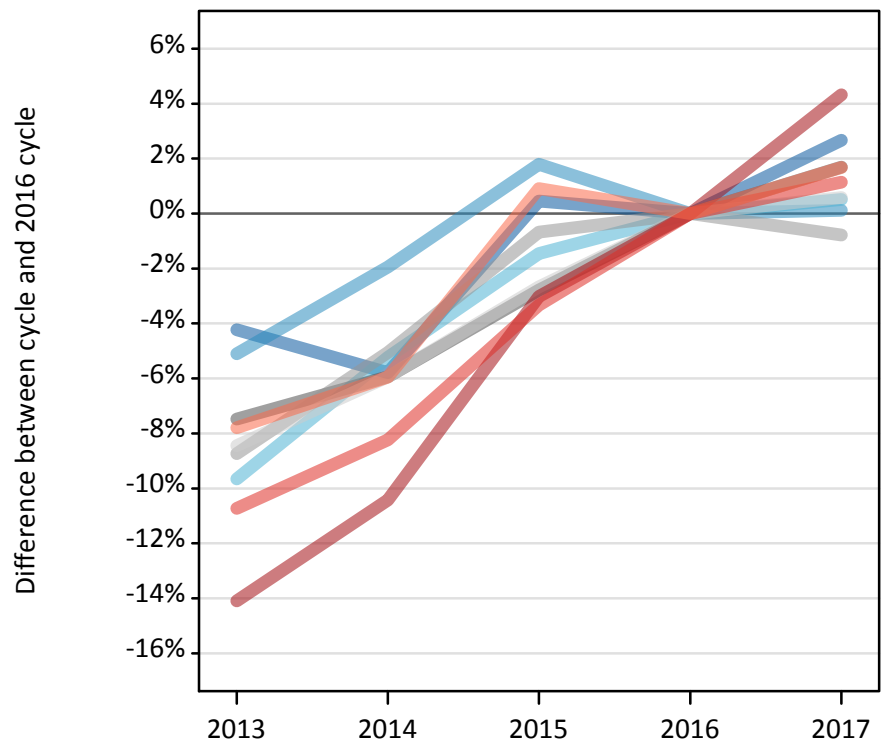
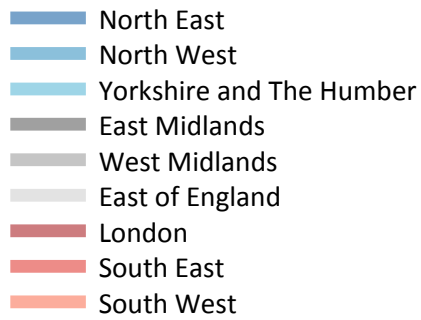
R.4 Placed applicants by region of domicile: 12 days after A level results day

Placed applicants: absolute change relative to 2016 cycle totals

Applicant Status	Domicile	2013	2014	2015	2016	2017
Placed	North East	170	-50	670	0	180
	North West	-1,110	430	880	0	-1,300
	Yorkshire and The Humber	-1,540	-530	220	0	-690
	East Midlands	-1,720	-620	-790	0	-480
	West Midlands	-1,920	-660	480	0	-1,260
	East of England	-2,320	-1,360	-280	0	-670
	London	-8,880	-5,790	-1,620	0	-920
	South East	-4,910	-2,930	-1,060	0	-740
	South West	-2,010	-1,070	-70	0	-450
	(England total)	-24,230	-12,570	-1,570	0	-6,340
	Scotland	-4,840	-4,190	-1,340	0	720
	Northern Ireland	-590	-550	-870	0	-500
	Wales	-1,340	-570	-130	0	-450
	UK	-31,000	-17,890	-3,900	0	-6,570

R.5 Placed 18 year old applicants by region of domicile: 12 days after A level results day

Placed 18 year old applicants: change relative to 2016 cycle totals



R.6 Placed 18 year old applicants by region of domicile: 12 days after A level results day

Applicant Status	Domicile	2013	2014	2015	2016	2017
Placed	North East	8,050	7,920	8,440	8,400	8,630
	North West	25,310	26,150	27,150	26,670	26,700
	Yorkshire and The Humber	17,210	18,050	18,770	19,040	19,140
	East Midlands	14,800	15,050	15,550	16,000	16,270
	West Midlands	19,440	20,220	21,160	21,300	21,140
	East of England	20,850	21,420	22,160	22,770	22,900
	London	31,180	32,510	35,200	36,300	37,860
	South East	31,210	32,080	33,800	34,960	35,360
	South West	15,910	16,230	17,420	17,260	17,550
	(England total)	183,950	189,630	199,640	202,700	205,550
	Scotland	14,140	14,310	14,400	14,640	14,650
	Northern Ireland	8,670	8,480	8,380	8,600	8,470
	Wales	9,600	9,990	10,460	10,580	10,240
	UK	216,370	222,410	232,870	236,520	238,900

R.7 Placed 18 year old applicants by region of domicile: 12 days after A level results day

Placed 18 year old applicants: change relative to 2016 cycle totals

Applicant Status	Domicile	2013	2014	2015	2016	2017
Placed	North East	-4%	-6%	0%	0%	3%
	North West	-5%	-2%	2%	0%	0%
	Yorkshire and The Humber	-10%	-5%	-1%	0%	1%
	East Midlands	-7%	-6%	-3%	0%	2%
	West Midlands	-9%	-5%	-1%	0%	-1%
	East of England	-8%	-6%	-3%	0%	1%
	London	-14%	-10%	-3%	0%	4%
	South East	-11%	-8%	-3%	0%	1%
	South West	-8%	-6%	1%	0%	2%
	(England total)	-9%	-6%	-2%	0%	1%
	Scotland	-3%	-2%	-2%	0%	0%
	Northern Ireland	1%	-1%	-3%	0%	-1%
	Wales	-9%	-6%	-1%	0%	-3%
	UK	-9%	-6%	-2%	0%	1%

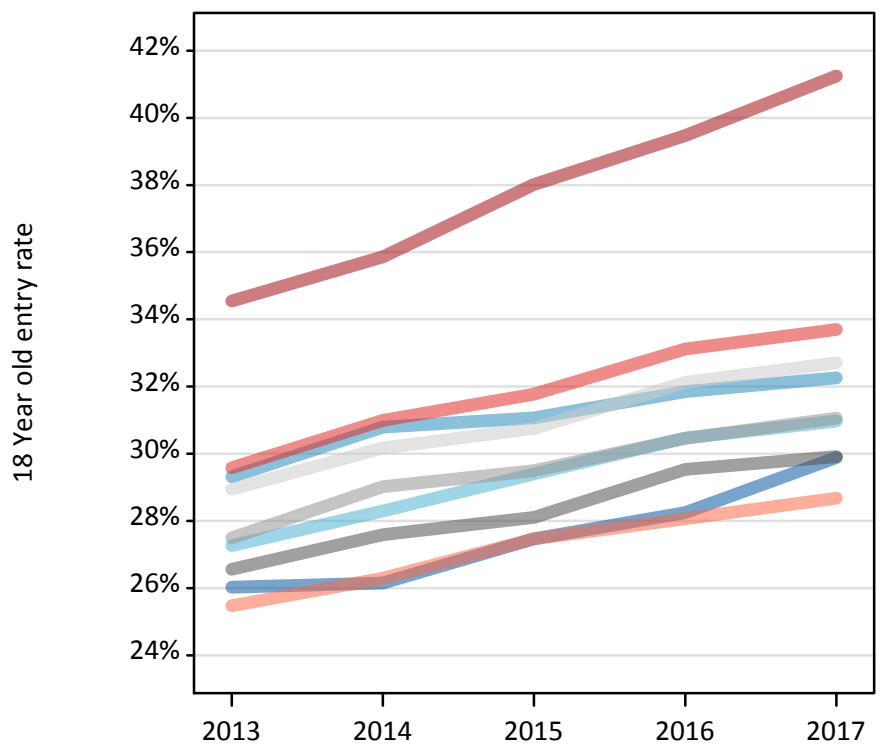
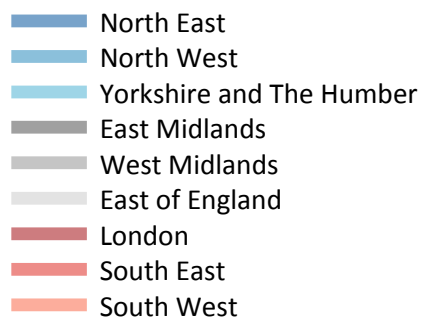
R.8 Placed 18 year old applicants by region of domicile: 12 days after A level results day

Placed 18 year old applicants: absolute change relative to 2016 cycle totals

Applicant Status	Domicile	2013	2014	2015	2016	2017
Placed	North East	-360	-490	40	0	220
	North West	-1,360	-520	480	0	30
	Yorkshire and The Humber	-1,840	-1,000	-280	0	100
	East Midlands	-1,200	-950	-450	0	270
	West Midlands	-1,860	-1,080	-150	0	-170
	East of England	-1,920	-1,350	-610	0	130
	London	-5,120	-3,780	-1,100	0	1,570
	South East	-3,750	-2,880	-1,160	0	400
	South West	-1,350	-1,030	160	0	290
	(England total)	-18,740	-13,070	-3,060	0	2,850
	Scotland	-500	-340	-250	0	10
	Northern Ireland	80	-120	-220	0	-130
	Wales	-980	-590	-130	0	-350
	UK	-20,150	-14,120	-3,650	0	2,380

R.9 Placed 18 year old applicants by region of domicile: 12 days after A level results day

Placed 18 year old applicants: entry rate



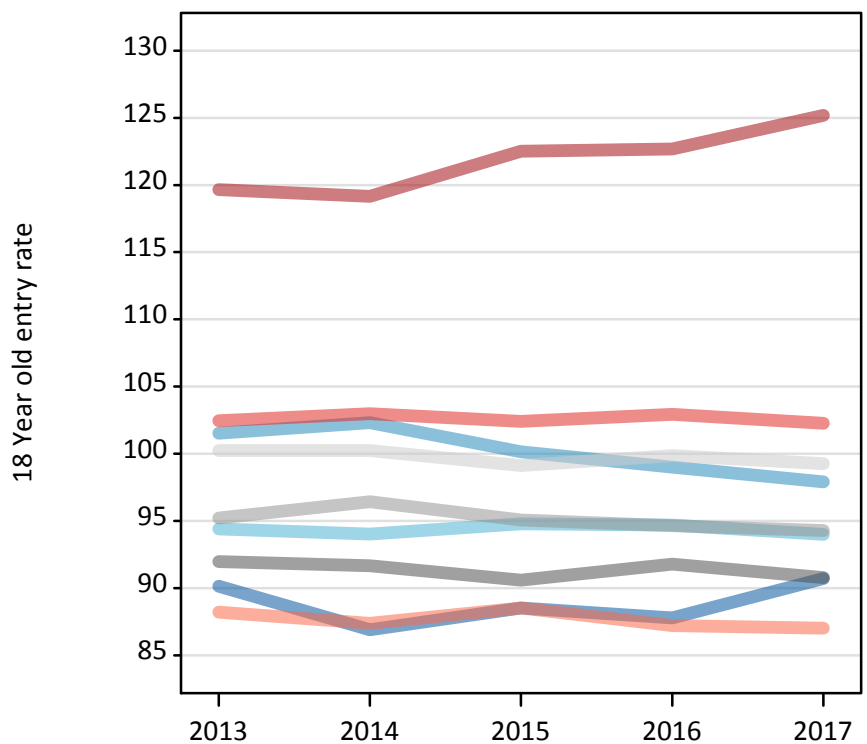
R.10 Placed 18 year old applicants by region of domicile: 12 days after A level results day

Placed 18 year old applicants: entry rate

Applicant Status	Domicile	2013	2014	2015	2016	2017
Placed	North East	26.0%	26.2%	27.5%	28.2%	29.9%
	North West	29.3%	30.8%	31.1%	31.9%	32.3%
	Yorkshire and The Humber	27.3%	28.3%	29.4%	30.5%	31.0%
	East Midlands	26.6%	27.6%	28.1%	29.5%	29.9%
	West Midlands	27.5%	29.0%	29.5%	30.5%	31.1%
	East of England	28.9%	30.2%	30.8%	32.1%	32.7%
	London	34.5%	35.9%	38.0%	39.5%	41.2%
	South East	29.6%	31.0%	31.8%	33.1%	33.7%
	South West	25.5%	26.3%	27.5%	28.1%	28.7%
	(England total)	28.9%	30.1%	31.0%	32.2%	32.9%
	Scotland	23.0%	23.3%	23.9%	24.9%	25.5%
	Northern Ireland	35.4%	34.9%	33.7%	35.2%	35.0%
	Wales	25.4%	26.6%	27.8%	29.1%	28.8%
	UK	28.4%	29.5%	30.4%	31.6%	32.2%

R.11 Placed 18 year old applicants by region of domicile: 12 days after A level results day

Placed 18 year old applicants: entry rates (indexed to 100 = England)



R.12 Placed 18 year old applicants by region of domicile: 12 days after A level results day

Placed 18 year old applicants: entry rate (indexed to 100 = England)

Applicant Status	Domicile	2013	2014	2015	2016	2017
Placed	North East	90	87	89	88	91
	North West	102	102	100	99	98
	Yorkshire and The Humber	94	94	95	95	94
	East Midlands	92	92	91	92	91
	West Midlands	95	96	95	95	94
	East of England	100	100	99	100	99
	London	120	119	123	123	125
	South East	102	103	102	103	102
	South West	88	87	89	87	87
	(England total)	100	100	100	100	100