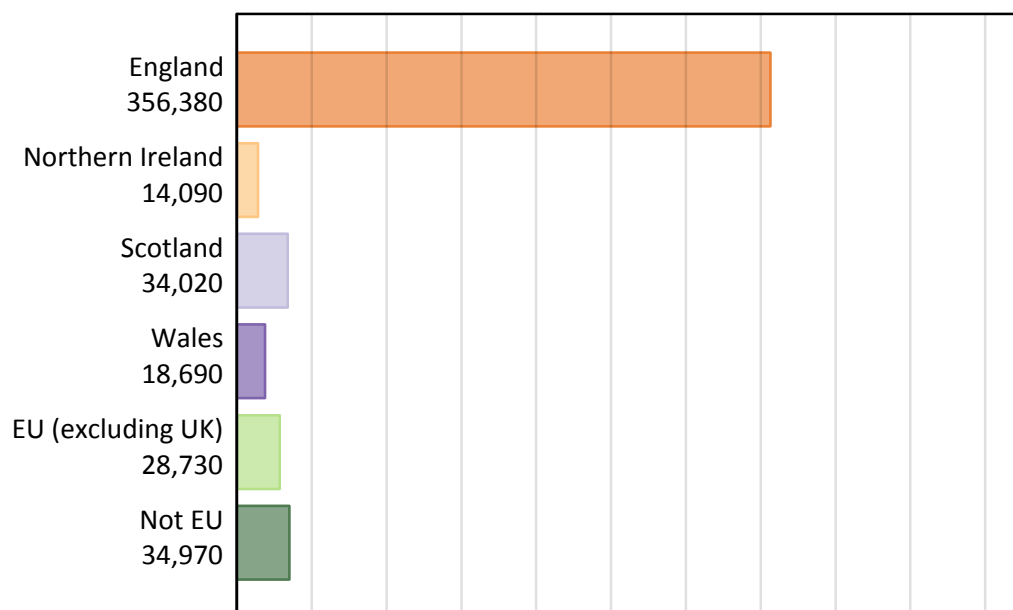


Analysis at 00:05 on Tuesday 29 August 2017 (12 days after A level results day)

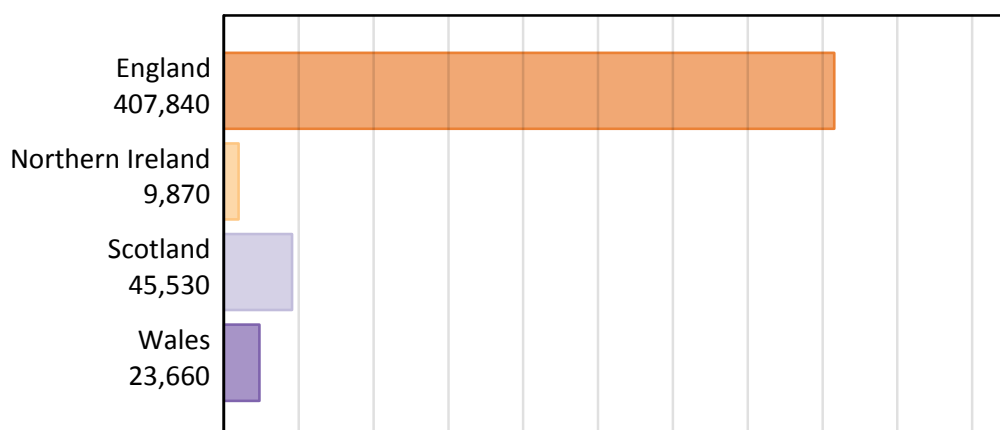
## B.1 Placed applicants by country of provider and domicile, 2017 cycle

Domicile of applicant	Country of provider				
	England	Northern Ireland	Scotland	Wales	UK
England	340,640	330	5,020	10,390	356,380
Northern Ireland	3,880	8,920	1,110	170	14,090
Scotland	1,570	30	32,380	50	34,020
Wales	7,980	10	130	10,580	18,690
EU (excluding UK)	22,930	360	4,030	1,400	28,730
Not EU	30,850	210	2,850	1,060	34,970
All	407,840	9,870	45,530	23,660	486,890

## B.2 Placed applicants by domicile group

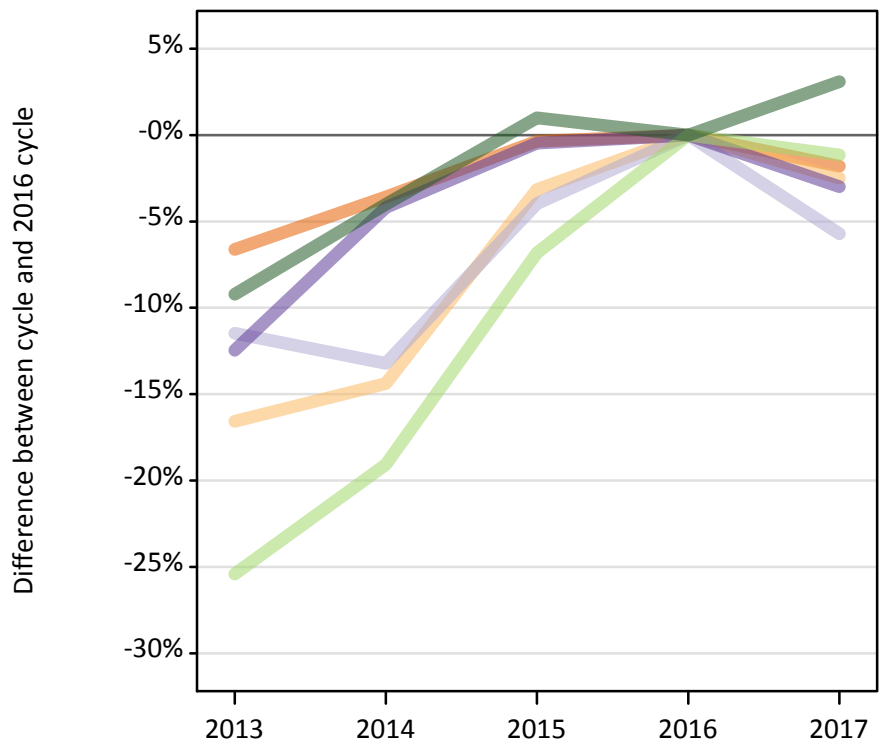
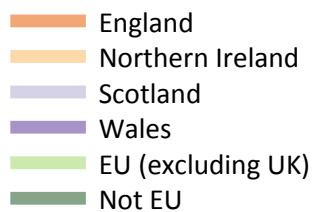


## B.3 Placed applicants by country of provider



#### B.4 Placed applicants at 12 days after A level results day: providers in England

Selected applicant domiciles: difference between cycle and 2016 cycle (at 12 days after A level results day)



#### B.5 Placed applicants at 12 days after A level results day: providers in England

Placed applicants by domicile (at 12 days after A level results day)

Domicile of applicant	2013	2014	2015	2016	2017
England	323,920	334,490	345,690	346,910	340,640
Northern Ireland	3,320	3,410	3,860	3,980	3,880
Scotland	1,470	1,440	1,600	1,660	1,570
Wales	7,200	7,880	8,180	8,220	7,980
EU (excluding UK)	17,310	18,770	21,620	23,200	22,930
Not EU	27,170	28,720	30,220	29,920	30,850

#### B.6 Placed applicants at 12 days after A level results day: providers in England

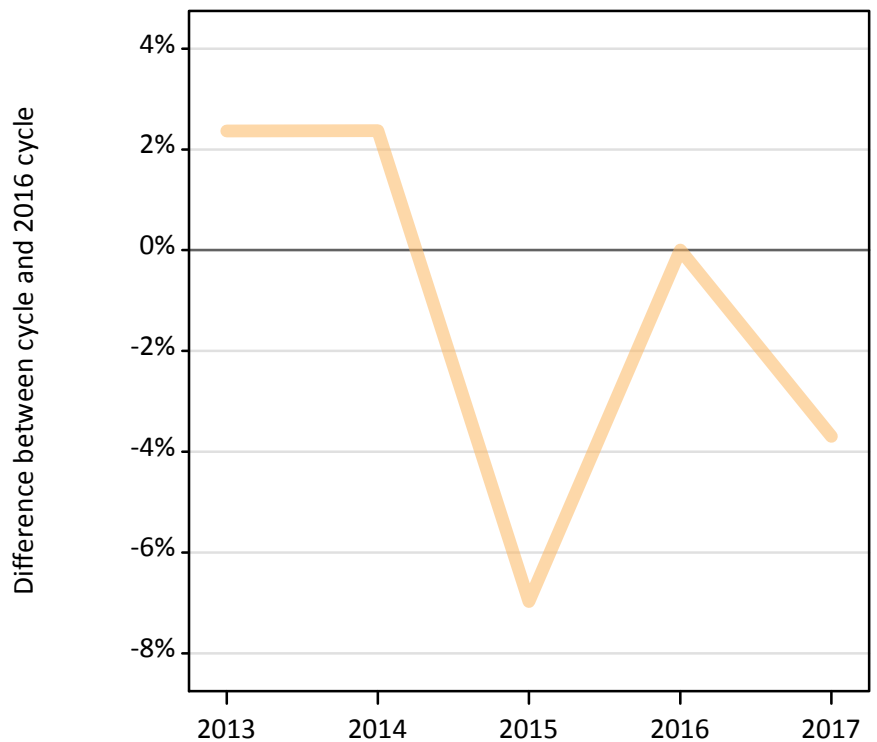
Selected applicant domiciles: difference between cycle and 2016 cycle (at 12 days after A level results day)

Domicile of applicant	2013	2014	2015	2016	2017
England	-7%	-4%	-0%	0%	-2%
Northern Ireland	-17%	-14%	-3%	0%	-2%
Scotland	-11%	-13%	-4%	0%	-6%
Wales	-12%	-4%	-0%	0%	-3%
EU (excluding UK)	-25%	-19%	-7%	0%	-1%
Not EU	-9%	-4%	1%	0%	3%

### B.7 Placed applicants at 12 days after A level results day: providers in Northern Ireland

Selected applicant domiciles: difference between cycle and 2016 cycle (at 12 days after A level results day)

— Northern Ireland



### B.8 Placed applicants at 12 days after A level results day: providers in Northern Ireland

Placed applicants by domicile (at 12 days after A level results day)

Domicile of applicant	2013	2014	2015	2016	2017
England	260	440	570	310	330
Northern Ireland	9,480	9,480	8,620	9,260	8,920
Scotland	10	20	20	20	30
Wales	10	10	10	10	10
EU (excluding UK)	450	470	420	360	360
Not EU	180	180	170	220	210

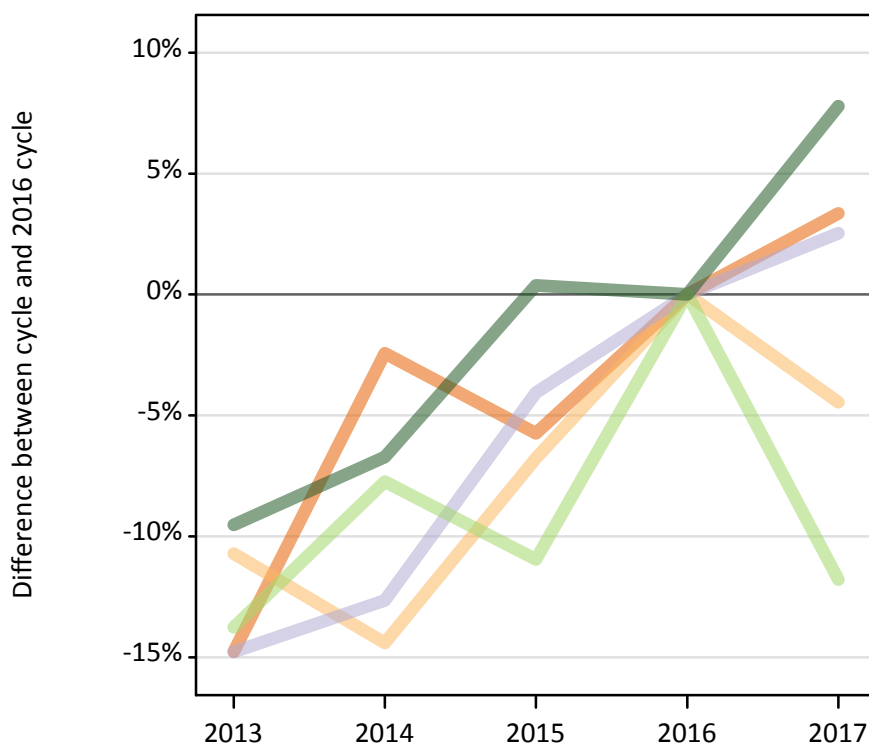
### B.9 Placed applicants at 12 days after A level results day: providers in Northern Ireland

Selected applicant domiciles: difference between cycle and 2016 cycle (at 12 days after A level results day)

Domicile of applicant	2013	2014	2015	2016	2017
Northern Ireland	2%	2%	-7%	0%	-4%

### B.10 Placed applicants at 12 days after A level results day: providers in Scotland

Selected applicant domiciles: difference between cycle and 2016 cycle (at 12 days after A level results day)



### B.11 Placed applicants at 12 days after A level results day: providers in Scotland

Placed applicants by domicile (at 12 days after A level results day)

Domicile of applicant	2013	2014	2015	2016	2017
England	4,140	4,740	4,580	4,860	5,020
Northern Ireland	1,040	1,000	1,090	1,170	1,110
Scotland	26,910	27,580	30,300	31,580	32,380
Wales	110	110	120	130	130
EU (excluding UK)	3,940	4,220	4,070	4,570	4,030
Not EU	2,400	2,470	2,660	2,650	2,850

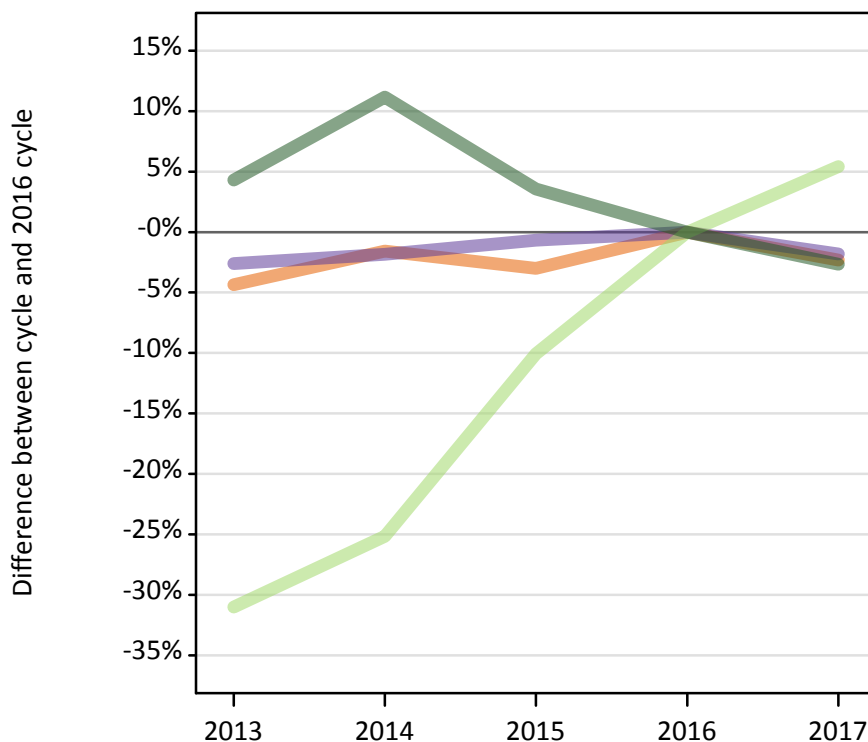
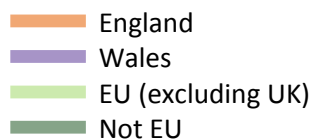
### B.12 Placed applicants at 12 days after A level results day: providers in Scotland

Selected applicant domiciles: difference between cycle and 2016 cycle (at 12 days after A level results day)

Domicile of applicant	2013	2014	2015	2016	2017
England	-15%	-2%	-6%	0%	3%
Northern Ireland	-11%	-14%	-7%	0%	-4%
Scotland	-15%	-13%	-4%	0%	3%
EU (excluding UK)	-14%	-8%	-11%	0%	-12%
Not EU	-10%	-7%	0%	0%	8%

### B.13 Placed applicants at 12 days after A level results day: providers in Wales

Selected applicant domiciles: difference between cycle and 2016 cycle (at 12 days after A level results day)



### B.14 Placed applicants at 12 days after A level results day: providers in Wales

Placed applicants by domicile (at 12 days after A level results day)

Domicile of applicant	2013	2014	2015	2016	2017
England	10,170	10,470	10,310	10,630	10,390
Northern Ireland	160	150	170	180	170
Scotland	60	60	50	40	50
Wales	10,490	10,580	10,700	10,770	10,580
EU (excluding UK)	920	1,000	1,200	1,330	1,400
Not EU	1,140	1,220	1,130	1,090	1,060

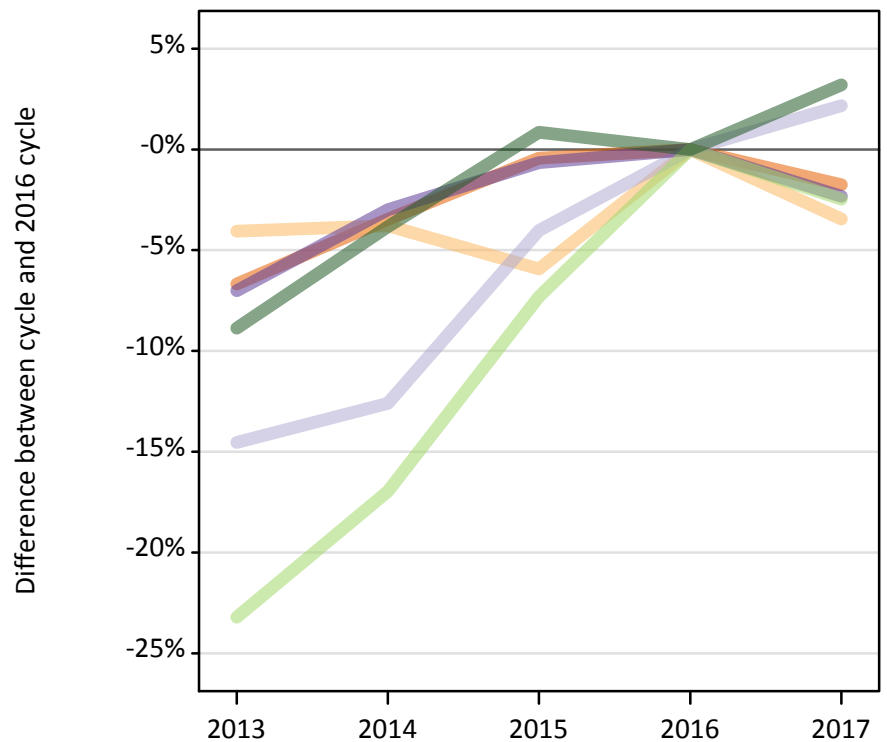
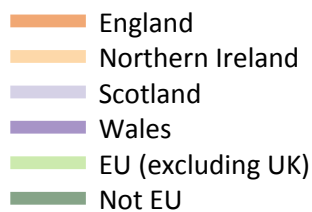
### B.15 Placed applicants at 12 days after A level results day: providers in Wales

Selected applicant domiciles: difference between cycle and 2016 cycle (at 12 days after A level results day)

Domicile of applicant	2013	2014	2015	2016	2017
England	-4%	-2%	-3%	0%	-2%
Wales	-3%	-2%	-1%	0%	-2%
EU (excluding UK)	-31%	-25%	-10%	0%	5%
Not EU	4%	11%	4%	0%	-3%

### B.16 Placed applicants at 12 days after A level results day: providers in the UK

Selected applicant domiciles: difference between cycle and 2016 cycle (at 12 days after A level results day)



### B.17 Placed applicants at 12 days after A level results day: providers in the UK

Placed applicants by domicile (at 12 days after A level results day)

Domicile of applicant	2013	2014	2015	2016	2017
England	338,490	350,140	361,150	362,720	356,380
Northern Ireland	14,000	14,040	13,730	14,600	14,090
Scotland	28,460	29,110	31,960	33,300	34,020
Wales	17,800	18,570	19,010	19,140	18,690
EU (excluding UK)	22,620	24,460	27,300	29,460	28,730
Not EU	30,880	32,590	34,180	33,890	34,970

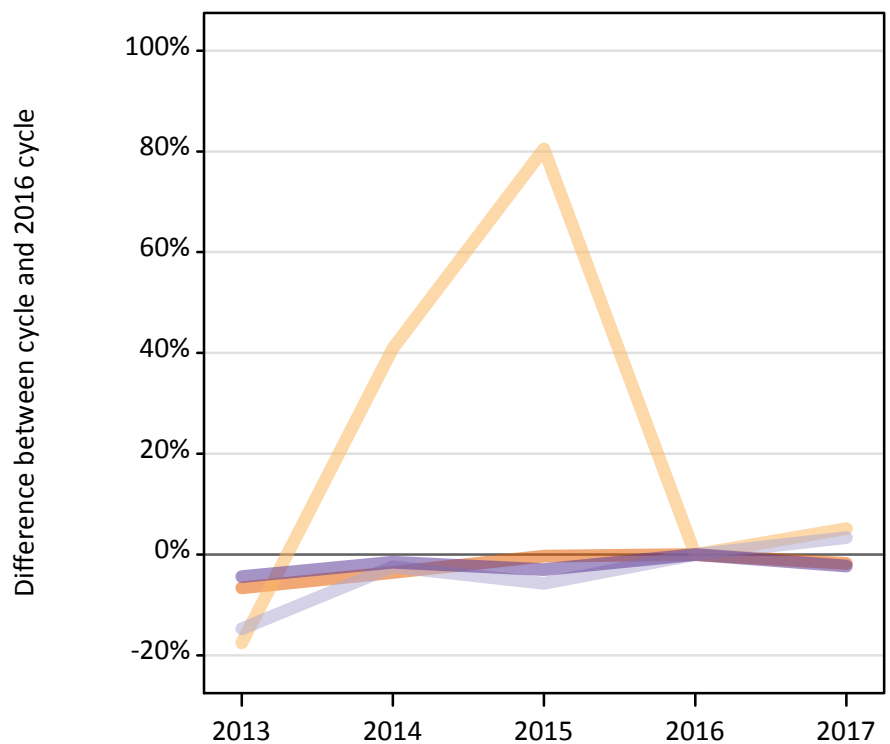
### B.18 Placed applicants at 12 days after A level results day: providers in the UK

Selected applicant domiciles: difference between cycle and 2016 cycle (at 12 days after A level results day)

Domicile of applicant	2013	2014	2015	2016	2017
England	-7%	-3%	-0%	0%	-2%
Northern Ireland	-4%	-4%	-6%	0%	-3%
Scotland	-15%	-13%	-4%	0%	2%
Wales	-7%	-3%	-1%	0%	-2%
EU (excluding UK)	-23%	-17%	-7%	0%	-2%
Not EU	-9%	-4%	1%	0%	3%

### B.19 Placed applicants at 12 days after A level results day: domiciled in England

Selected provider countries: difference between cycle and 2016 cycle (at 12 days after A level results day)



### B.20 Placed applicants at 12 days after A level results day: domiciled in England

Placed applicants by provider country (at 12 days after A level results day)

Country of provider	2013	2014	2015	2016	2017
England	323,920	334,490	345,690	346,910	340,640
Northern Ireland	260	440	570	310	330
Scotland	4,140	4,740	4,580	4,860	5,020
Wales	10,170	10,470	10,310	10,630	10,390

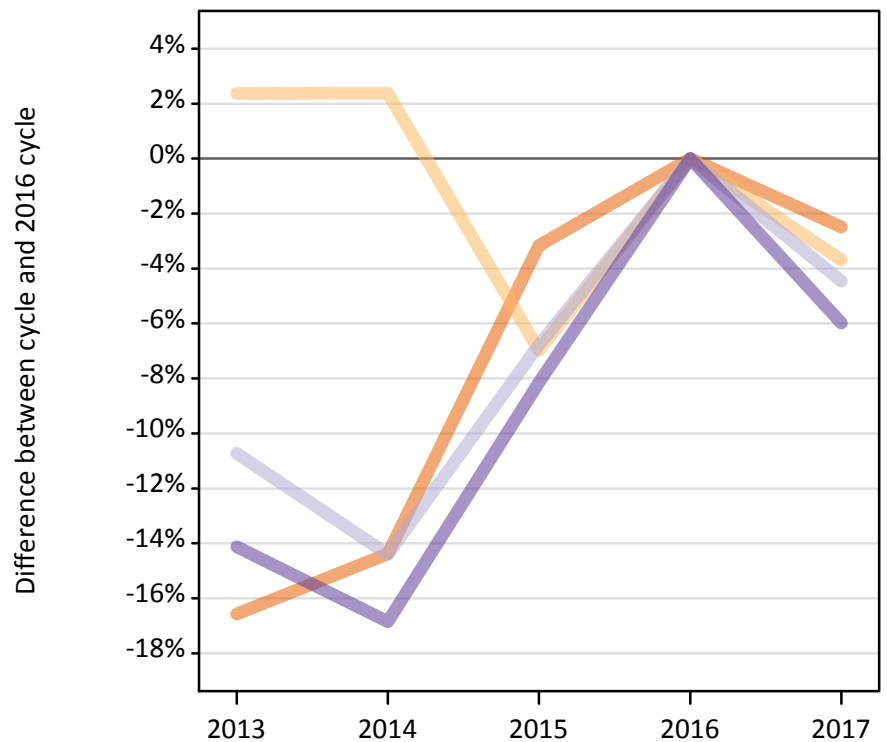
### B.21 Placed applicants at 12 days after A level results day: domiciled in England

Selected provider countries: difference between cycle and 2016 cycle (at 12 days after A level results day)

Country of provider	2013	2014	2015	2016	2017
England	-7%	-4%	-0%	0%	-2%
Northern Ireland	-18%	41%	81%	0%	5%
Scotland	-15%	-2%	-6%	0%	3%
Wales	-4%	-2%	-3%	0%	-2%

### B.22 Placed applicants at 12 days after A level results day: domiciled in Northern Ireland

Selected provider countries: difference between cycle and 2016 cycle (at 12 days after A level results day)



### B.23 Placed applicants at 12 days after A level results day: domiciled in Northern Ireland

Placed applicants by provider country (at 12 days after A level results day)

Country of provider	2013	2014	2015	2016	2017
England	3,320	3,410	3,860	3,980	3,880
Northern Ireland	9,480	9,480	8,620	9,260	8,920
Scotland	1,040	1,000	1,090	1,170	1,110
Wales	160	150	170	180	170

### B.24 Placed applicants at 12 days after A level results day: domiciled in Northern Ireland

Selected provider countries: difference between cycle and 2016 cycle (at 12 days after A level results day)

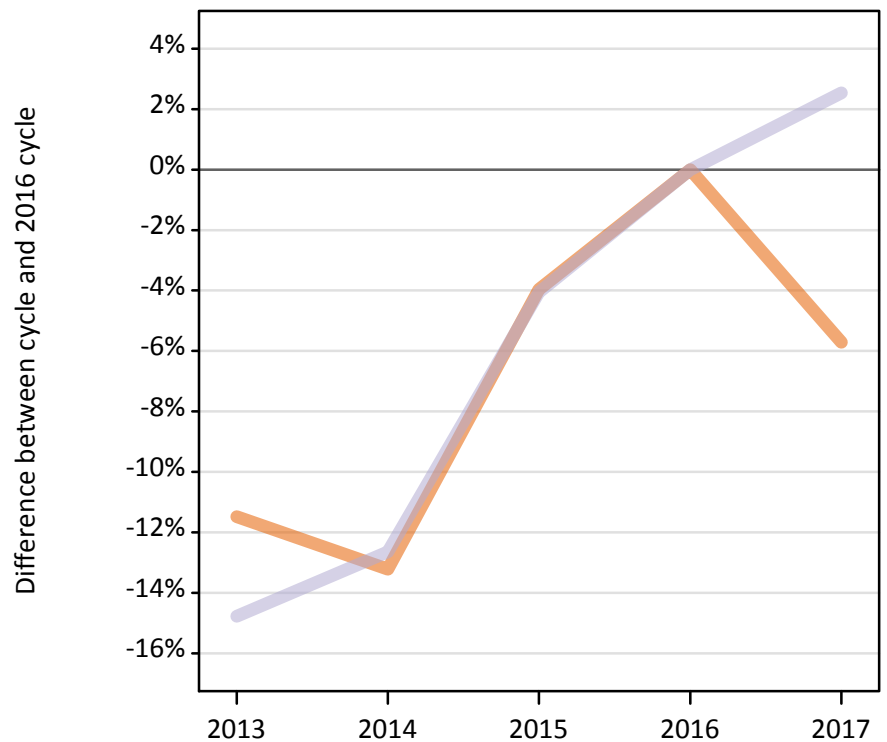
Country of provider	2013	2014	2015	2016	2017
England	-17%	-14%	-3%	0%	-2%
Northern Ireland	2%	2%	-7%	0%	-4%
Scotland	-11%	-14%	-7%	0%	-4%
Wales	-14%	-17%	-8%	0%	-6%



### B.25 Placed applicants at 12 days after A level results day: domiciled in Scotland

Selected provider countries: difference between cycle and 2016 cycle (at 12 days after A level results day)

England  
Scotland



### B.26 Placed applicants at 12 days after A level results day: domiciled in Scotland

Placed applicants by provider country (at 12 days after A level results day)

Country of provider	2013	2014	2015	2016	2017
England	1,470	1,440	1,600	1,660	1,570
Northern Ireland	10	20	20	20	30
Scotland	26,910	27,580	30,300	31,580	32,380
Wales	60	60	50	40	50

### B.27 Placed applicants at 12 days after A level results day: domiciled in Scotland

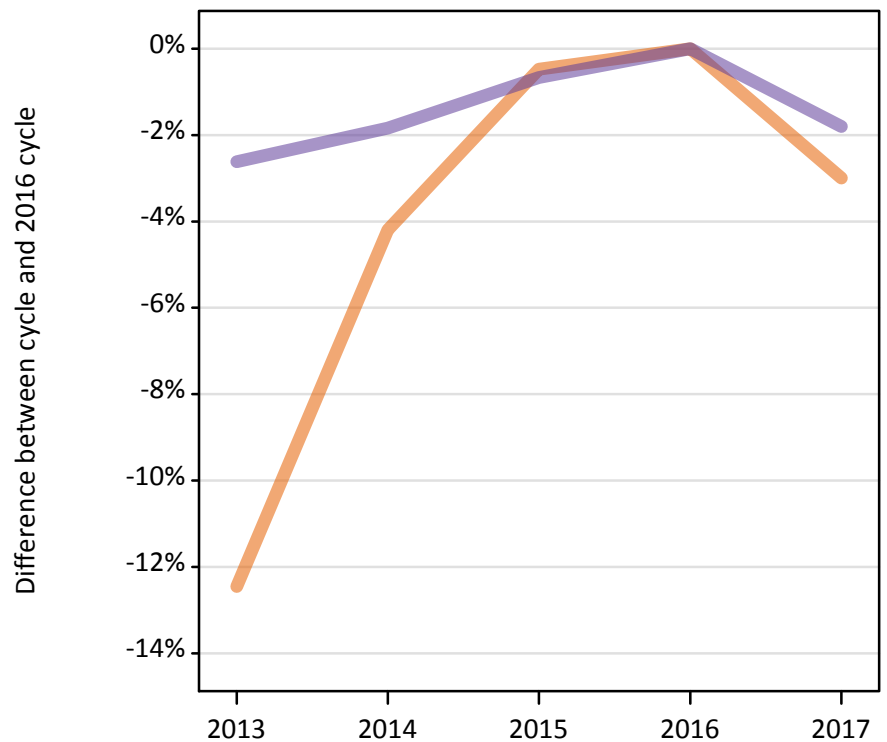
Selected provider countries: difference between cycle and 2016 cycle (at 12 days after A level results day)

Country of provider	2013	2014	2015	2016	2017
England	-11%	-13%	-4%	0%	-6%
Scotland	-15%	-13%	-4%	0%	3%

### B.28 Placed applicants at 12 days after A level results day: domiciled in Wales

Selected provider countries: difference between cycle and 2016 cycle (at 12 days after A level results day)

England  
Wales



### B.29 Placed applicants at 12 days after A level results day: domiciled in Wales

Placed applicants by provider country (at 12 days after A level results day)

Country of provider	2013	2014	2015	2016	2017
England	7,200	7,880	8,180	8,220	7,980
Northern Ireland	10	10	10	10	10
Scotland	110	110	120	130	130
Wales	10,490	10,580	10,700	10,770	10,580

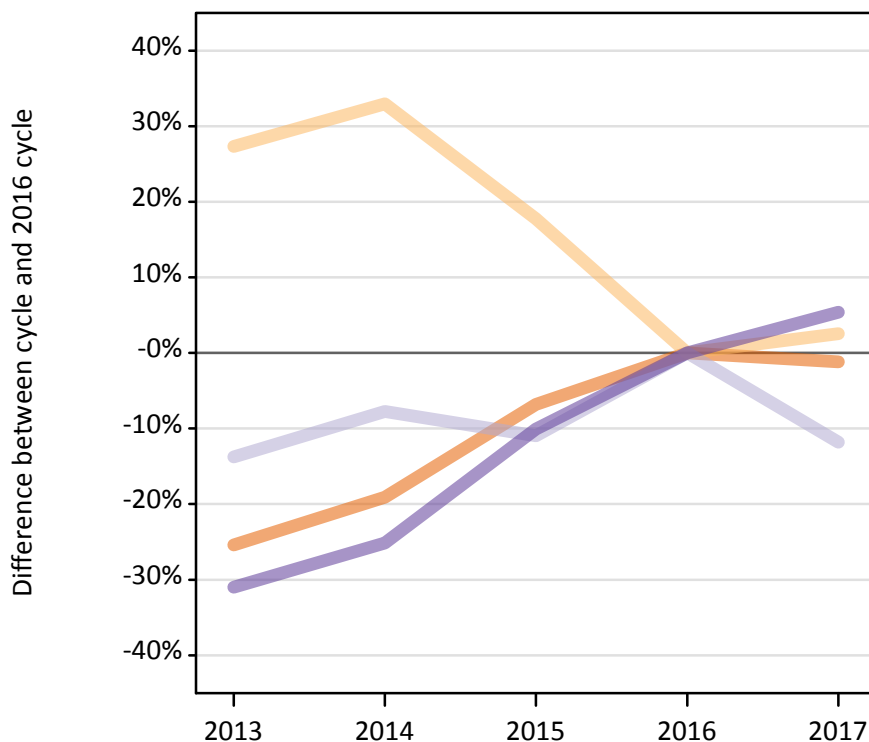
### B.30 Placed applicants at 12 days after A level results day: domiciled in Wales

Selected provider countries: difference between cycle and 2016 cycle (at 12 days after A level results day)

Country of provider	2013	2014	2015	2016	2017
England	-12%	-4%	-0%	0%	-3%
Wales	-3%	-2%	-1%	0%	-2%

### B.31 Placed applicants at 12 days after A level results day: domiciled in EU (excluding UK)

Selected provider countries: difference between cycle and 2016 cycle (at 12 days after A level results day)



### B.32 Placed applicants at 12 days after A level results day: domiciled in EU (excluding UK)

Placed applicants by provider country (at 12 days after A level results day)

Country of provider	2013	2014	2015	2016	2017
England	17,310	18,770	21,620	23,200	22,930
Northern Ireland	450	470	420	360	360
Scotland	3,940	4,220	4,070	4,570	4,030
Wales	920	1,000	1,200	1,330	1,400

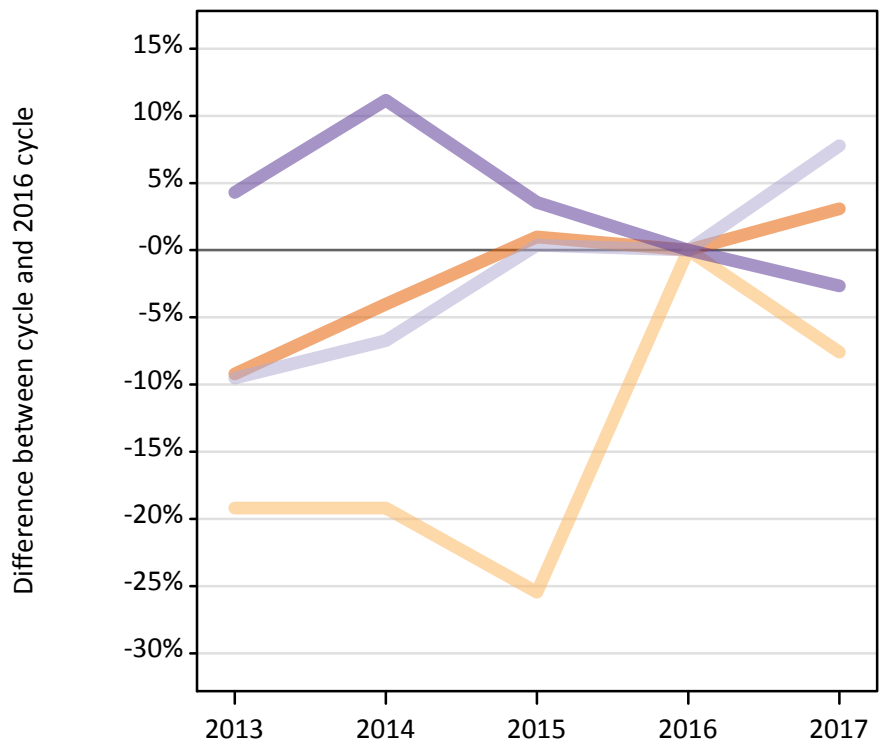
### B.33 Placed applicants at 12 days after A level results day: domiciled in EU (excluding UK)

Selected provider countries: difference between cycle and 2016 cycle (at 12 days after A level results day)

Country of provider	2013	2014	2015	2016	2017
England	-25%	-19%	-7%	0%	-1%
Northern Ireland	27%	33%	18%	0%	3%
Scotland	-14%	-8%	-11%	0%	-12%
Wales	-31%	-25%	-10%	0%	5%

### B.34 Placed applicants at 12 days after A level results day: domiciled in Not EU

Selected provider countries: difference between cycle and 2016 cycle (at 12 days after A level results day)



### B.35 Placed applicants at 12 days after A level results day: domiciled in Not EU

Placed applicants by provider country (at 12 days after A level results day)

Country of provider	2013	2014	2015	2016	2017
England	27,170	28,720	30,220	29,920	30,850
Northern Ireland	180	180	170	220	210
Scotland	2,400	2,470	2,660	2,650	2,850
Wales	1,140	1,220	1,130	1,090	1,060

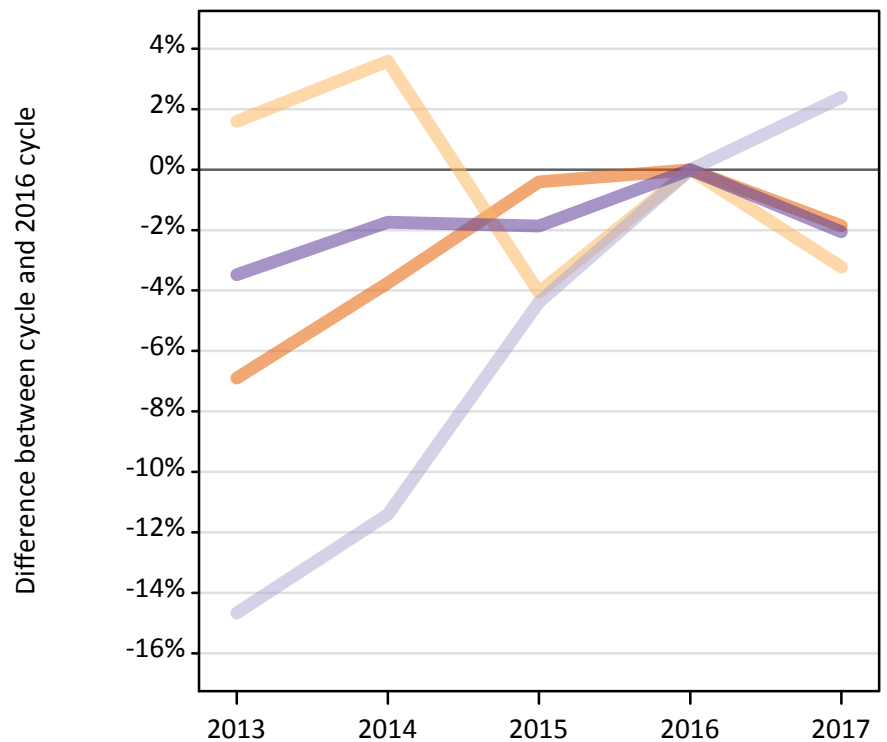
### B.36 Placed applicants at 12 days after A level results day: domiciled in Not EU

Selected provider countries: difference between cycle and 2016 cycle (at 12 days after A level results day)

Country of provider	2013	2014	2015	2016	2017
England	-9%	-4%	1%	0%	3%
Northern Ireland	-19%	-19%	-25%	0%	-8%
Scotland	-10%	-7%	0%	0%	8%
Wales	4%	11%	4%	0%	-3%

### B.37 Placed applicants at 12 days after A level results day: domiciled in UK

Selected provider countries: difference between cycle and 2016 cycle (at 12 days after A level results day)



### B.38 Placed applicants at 12 days after A level results day: domiciled in UK

Placed applicants by provider country (at 12 days after A level results day)

Country of provider	2013	2014	2015	2016	2017
England	335,910	347,220	359,330	360,780	354,060
Northern Ireland	9,760	9,950	9,220	9,610	9,300
Scotland	32,200	33,430	36,080	37,740	38,640
Wales	20,880	21,260	21,230	21,630	21,190

### B.39 Placed applicants at 12 days after A level results day: domiciled in UK

Selected provider countries: difference between cycle and 2016 cycle (at 12 days after A level results day)

Country of provider	2013	2014	2015	2016	2017
England	-7%	-4%	-0%	0%	-2%
Northern Ireland	2%	4%	-4%	0%	-3%
Scotland	-15%	-11%	-4%	0%	2%
Wales	-3%	-2%	-2%	0%	-2%