

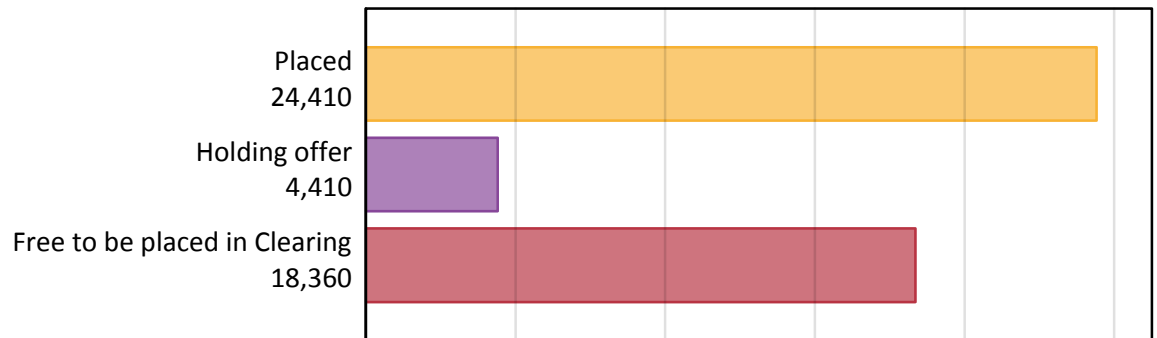
Daily Clearing Analysis: Overview

B7 Nursing analysis at 00:05 on Friday 25 August 2017 (8 days after A level results day)

AB.1 Placed applicants to nursing from all domiciles, 2017 cycle

| Applicant type | Status | 2017 |
|--------------------|-------------------------------|--------|
| Main scheme | Placed (Clearing) | 1,080 |
| | Placed (Adjustment) | 20 |
| | Placed (Firm) | 21,590 |
| | Placed (Insurance) | 490 |
| | Placed (Other) | 1,000 |
| | Holding offer | 4,410 |
| | Free to be placed in Clearing | 18,360 |
| Direct to Clearing | Placed (Direct to Clearing) | 230 |
| | Other (Direct to Clearing) | 380 |
| All applicants | Placed | 24,410 |

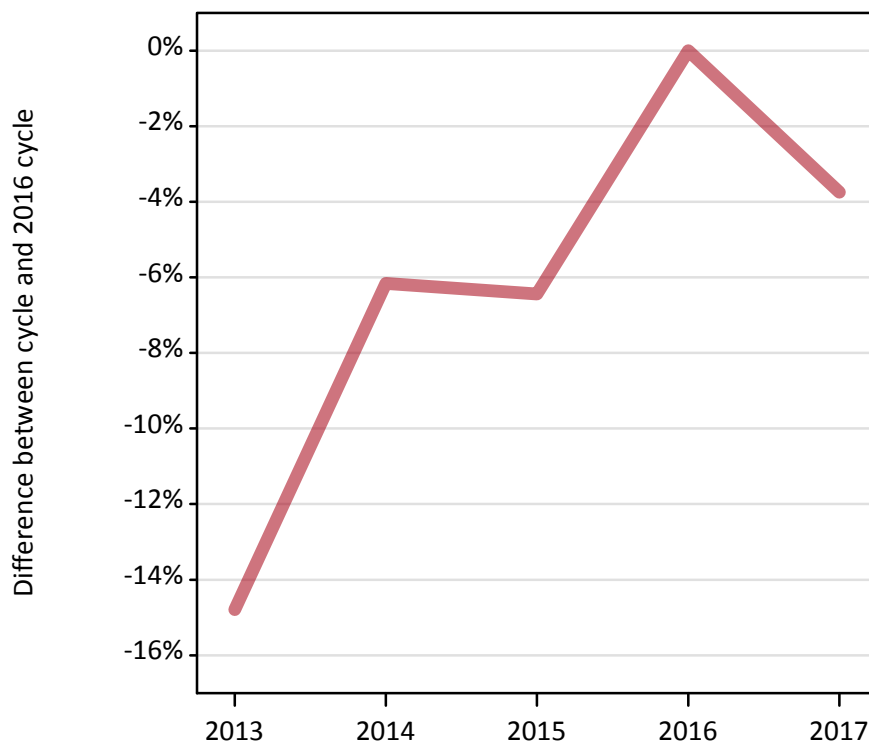
AB.2 Summary of nursing applicants who are placed, holding offers or free to be placed in Clearing (all domiciles)



AB.3 Placed applicants to nursing from all domiciles: 8 days after A level results day

Placed applicants to nursing: difference between cycle and 2016 cycle

Placed



AB.4 Placed applicants to nursing from all domiciles: 8 days after A level results day

Placed applicants to nursing: applicants at 8 days after A level results day

| Applicant type | Status | 2013 | 2014 | 2015 | 2016 | 2017 |
|----------------|--------|--------|--------|--------|--------|--------|
| All applicants | Placed | 21,610 | 23,800 | 23,730 | 25,360 | 24,410 |

AB.5 Placed applicants to nursing from all domiciles: 8 days after A level results day

Placed applicants to nursing: difference between cycle and 2016 cycle

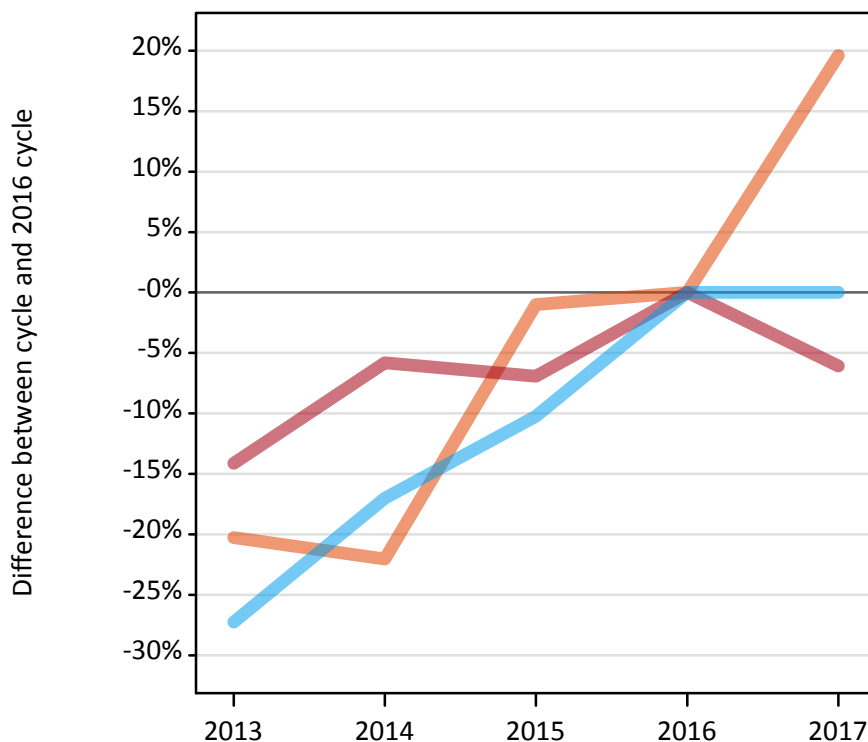
| Applicant type | Status | 2013 | 2014 | 2015 | 2016 | 2017 |
|----------------|--------|------|------|------|------|------|
| All applicants | Placed | -15% | -6% | -6% | 0% | -4% |

Note: Percentage changes are not plotted for lines with, on average, fewer than 30 applicants per year. As a result, lines for some, or all, of the states may be missing.

AB.6 Placed main scheme applicants to nursing from all domiciles: 8 days after A level results day

Selected placed routes: difference between cycle and 2016 cycle

- Placed (Clearing)
- Placed (Firm)
- Placed (Insurance)



AB.7 Placed main scheme applicants to nursing from all domiciles: 8 days after A level results day

All Main scheme placed routes (excluding Adjustment): applicants at 8 days after A level results day

| Applicant type | Status | 2013 | 2014 | 2015 | 2016 | 2017 |
|----------------|--------------------|--------|--------|--------|--------|--------|
| Main scheme | Placed (Clearing) | 720 | 700 | 890 | 900 | 1,080 |
| | Placed (Firm) | 19,740 | 21,650 | 21,390 | 22,980 | 21,590 |
| | Placed (Insurance) | 360 | 410 | 440 | 490 | 490 |
| | Placed (Other) | 660 | 960 | 880 | 840 | 1,000 |

AB.8 Placed main scheme applicants to nursing from all domiciles: 8 days after A level results day

Selected placed routes: difference between cycle and 2016 cycle

| Applicant type | Status | 2013 | 2014 | 2015 | 2016 | 2017 |
|----------------|--------------------|------|------|------|------|------|
| Main scheme | Placed (Clearing) | -20% | -22% | -1% | 0% | 20% |
| | Placed (Firm) | -14% | -6% | -7% | 0% | -6% |
| | Placed (Insurance) | -27% | -17% | -10% | 0% | 0% |

Note: Percentage changes are not plotted for lines with, on average, fewer than 30 applicants per year. As a result, lines for some, or all, of the states may be missing.

AB.9 Main scheme applicants placed to nursing through adjustment: 8 days after A level results day

Placed through adjustment: difference between cycle and 2016 cycle

[This chart is not part of this report]

AB.10 Main scheme applicants placed to nursing through adjustment: 8 days after A level results day

Placed through adjustment: applicants at 8 days after A level results day

| Applicant type | Status | 2013 | 2014 | 2015 | 2016 | 2017 |
|----------------|---------------------|------|------|------|------|------|
| Main scheme | Placed (Adjustment) | 10 | 10 | 10 | 0 | 20 |

AB.11 Main scheme applicants placed to nursing through adjustment: 8 days after A level results day

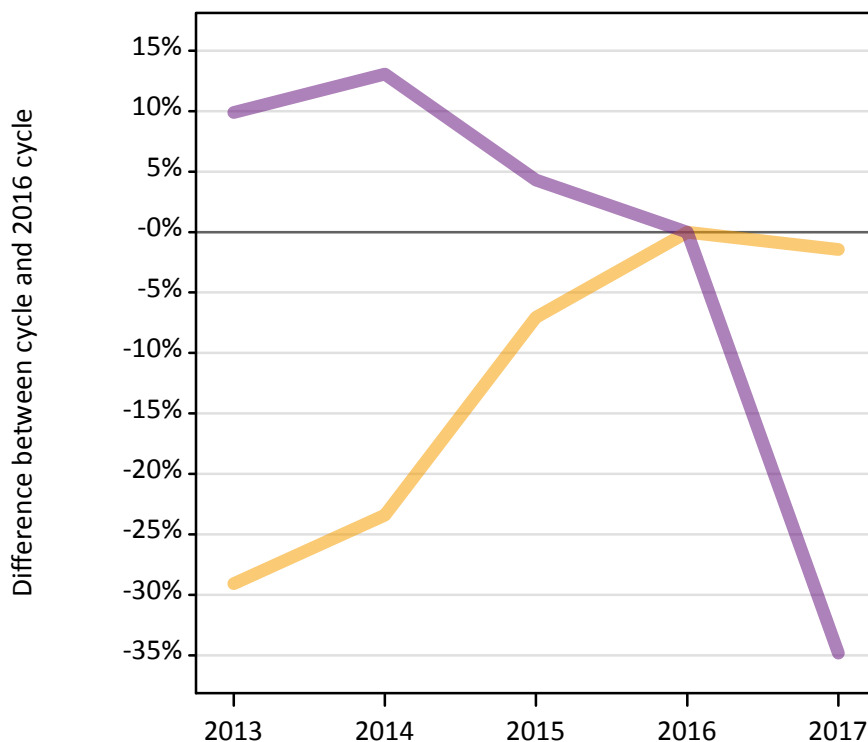
Placed through adjustment: difference between cycle and 2016 cycle

[This table is not part of this report]

AB.12 Main scheme applicants to nursing not currently placed from all domiciles: 8 days after A level results day

Applicants in unplaced states: difference between cycle and 2016 cycle

— Holding offer
— Free to be placed in Clearing



AB.13 Main scheme applicants to nursing not currently placed from all domiciles: 8 days after A level results day

Applicants in unplaced states: applicants at 8 days after A level results day

| Applicant type | Status | 2013 | 2014 | 2015 | 2016 | 2017 |
|----------------|-------------------------------|--------|--------|--------|--------|--------|
| Main scheme | Holding offer | 3,170 | 3,430 | 4,160 | 4,470 | 4,410 |
| | Free to be placed in Clearing | 30,960 | 31,850 | 29,380 | 28,170 | 18,360 |

AB.14 Main scheme applicants to nursing not currently placed from all domiciles: 8 days after A level results day

Applicants in unplaced states: difference between cycle and 2016 cycle

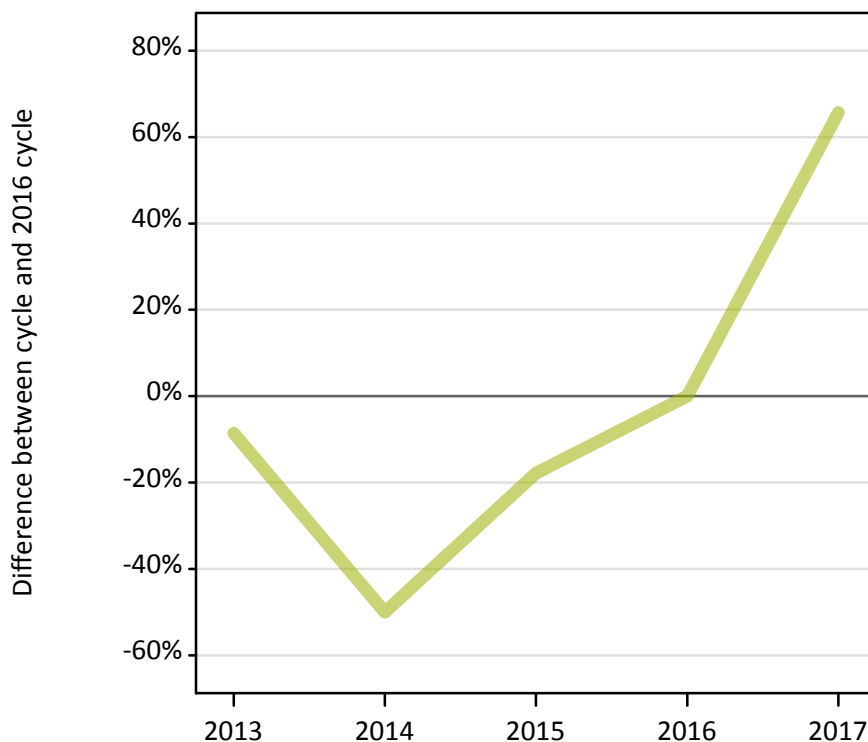
| Applicant type | Status | 2013 | 2014 | 2015 | 2016 | 2017 |
|----------------|-------------------------------|------|------|------|------|------|
| Main scheme | Holding offer | -29% | -23% | -7% | 0% | -1% |
| | Free to be placed in Clearing | 10% | 13% | 4% | 0% | -35% |

Note: Percentage changes are not plotted for lines with, on average, fewer than 30 applicants per year. As a result, lines for some, or all, of the states may be missing.

AB.15 Direct to Clearing applicants from all domiciles: 8 days after A level results day

Placed (Direct to Clearing): difference between cycle and 2016 cycle

Placed (Direct to Clearing)

**AB.16 Direct to Clearing applicants from all domiciles: 8 days after A level results day**

Direct to Clearing 8 days after A level results day

| Applicant type | Status | 2013 | 2014 | 2015 | 2016 | 2017 |
|--------------------|-----------------------------|------|------|------|------|------|
| Direct to Clearing | Placed (Direct to Clearing) | 130 | 70 | 120 | 140 | 230 |
| | Other (Direct to Clearing) | 180 | 150 | 230 | 230 | 380 |

AB.17 Direct to Clearing applicants from all domiciles: 8 days after A level results day

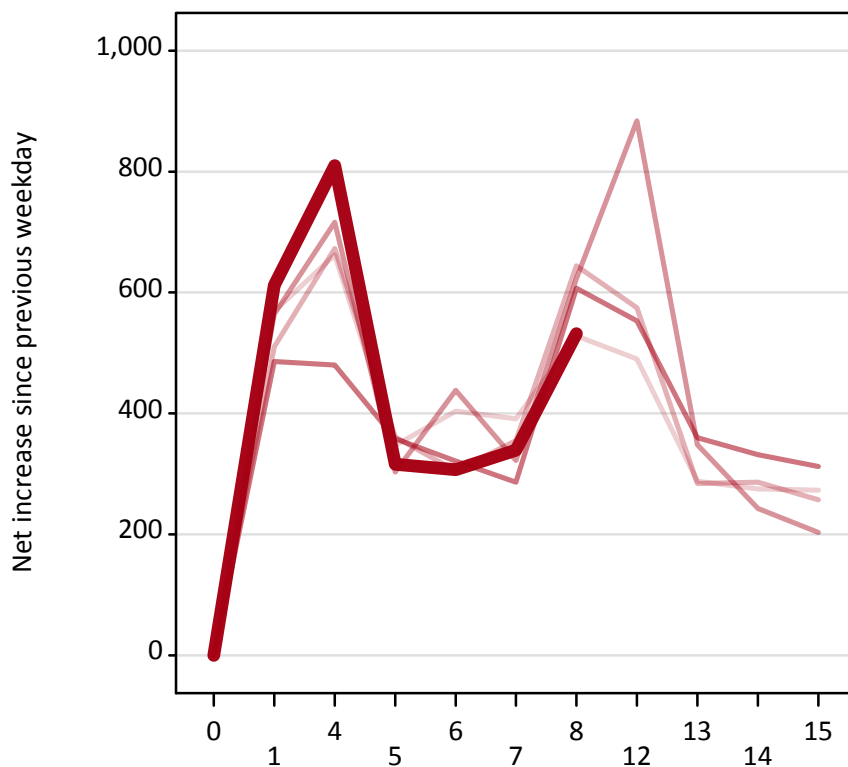
Placed (Direct to Clearing): difference between cycle and 2016 cycle

| Applicant type | Status | 2013 | 2014 | 2015 | 2016 | 2017 |
|--------------------|-----------------------------|------|------|------|------|------|
| Direct to Clearing | Placed (Direct to Clearing) | -9% | -50% | -18% | 0% | 66% |

Note: Percentage changes are not plotted for lines with, on average, fewer than 30 applicants per year. As a result, lines for some, or all, of the states may be missing.

AB.18 All Placed: Daily net change (from all domiciles)

Net increase since previous weekday (2017 cycle up to 8 days after A level results day)



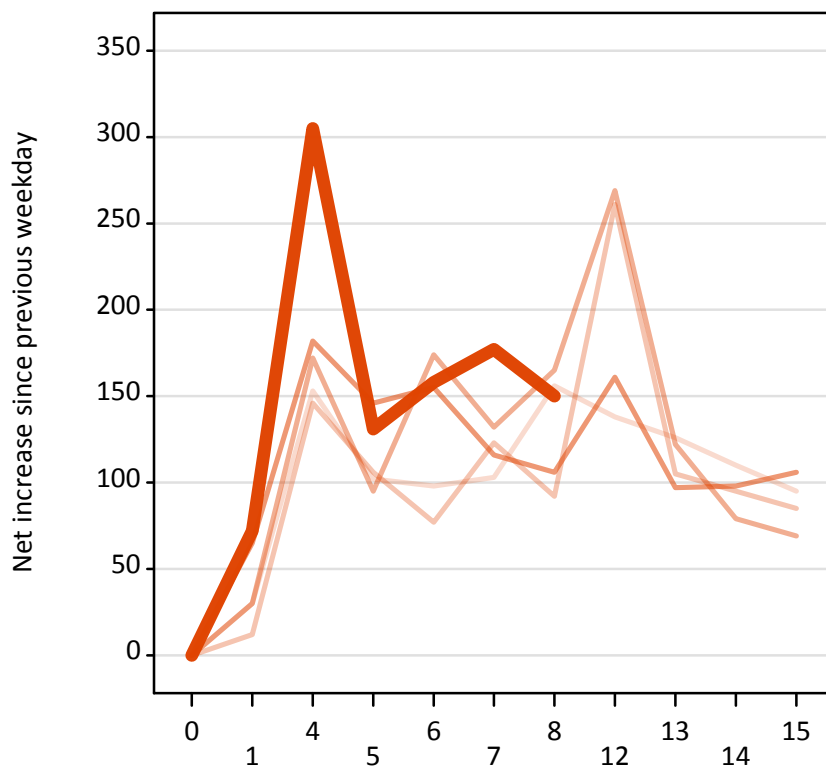
AB.19 All Placed: Daily net change (from all domiciles)

Net increase since previous weekday (2017 cycle up to 8 days after A level results day)

| Applicant status, days since A level results day | | 2013 | 2014 | 2015 | 2016 | 2017 |
|--|----|------|------|------|------|------|
| All Placed | 0 | 0 | 0 | 0 | 0 | 0 |
| | 1 | 570 | 510 | 560 | 490 | 610 |
| | 4 | 660 | 670 | 720 | 480 | 810 |
| | 5 | 350 | 360 | 300 | 360 | 320 |
| | 6 | 400 | 310 | 440 | 320 | 310 |
| | 7 | 390 | 360 | 320 | 290 | 340 |
| | 8 | 530 | 640 | 620 | 610 | 530 |
| | 12 | 490 | 580 | 880 | 550 | |
| | 13 | 290 | 280 | 350 | 360 | |
| | 14 | 280 | 290 | 240 | 330 | |
| | 15 | 270 | 260 | 200 | 310 | |

AB.20 Placed through Clearing only: Daily net change (from all domiciles)

Net increase since previous weekday (2017 cycle up to 8 days after A level results day)



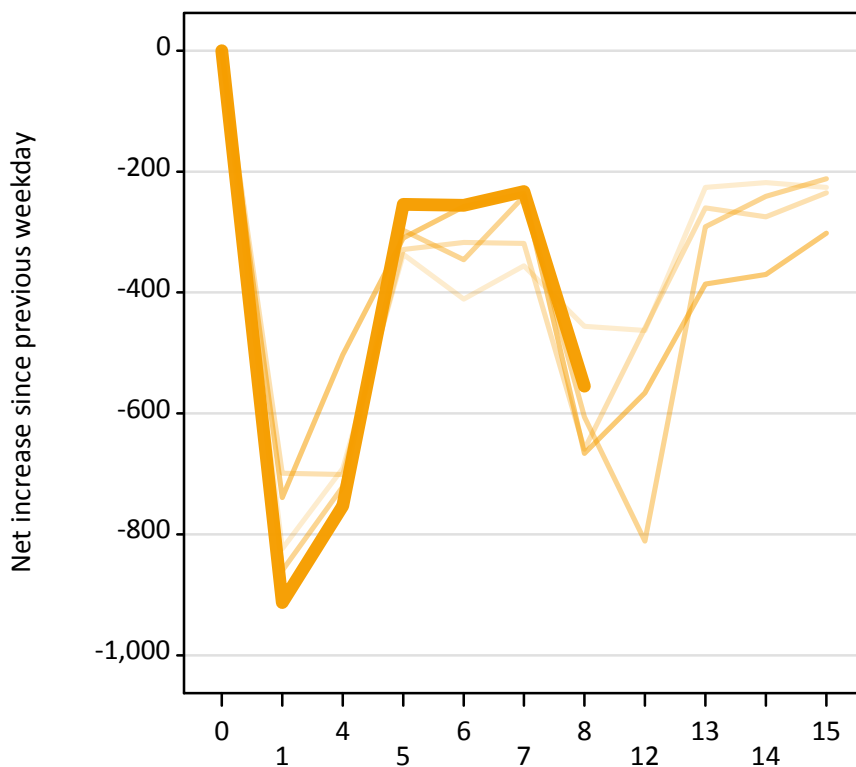
AB.21 Placed through Clearing only: Daily net change (from all domiciles)

Net increase since previous weekday (2017 cycle up to 8 days after A level results day)

| Applicant status, days since A level results day | | 2013 | 2014 | 2015 | 2016 | 2017 |
|--|----|------|------|------|------|------|
| Placed through Clearing only | 0 | 0 | 0 | 0 | 0 | 0 |
| | 1 | 30 | 10 | 30 | 70 | 70 |
| | 4 | 150 | 150 | 170 | 180 | 310 |
| | 5 | 100 | 110 | 100 | 150 | 130 |
| | 6 | 100 | 80 | 170 | 160 | 160 |
| | 7 | 100 | 120 | 130 | 120 | 180 |
| | 8 | 160 | 90 | 170 | 110 | 150 |
| | 12 | 140 | 260 | 270 | 160 | |
| | 13 | 130 | 110 | 120 | 100 | |
| | 14 | 110 | 100 | 80 | 100 | |
| | 15 | 100 | 90 | 70 | 110 | |

AB.22 Holding Offer: Daily net change (from all domiciles)

Net increase since previous weekday (2017 cycle up to 8 days after A level results day)



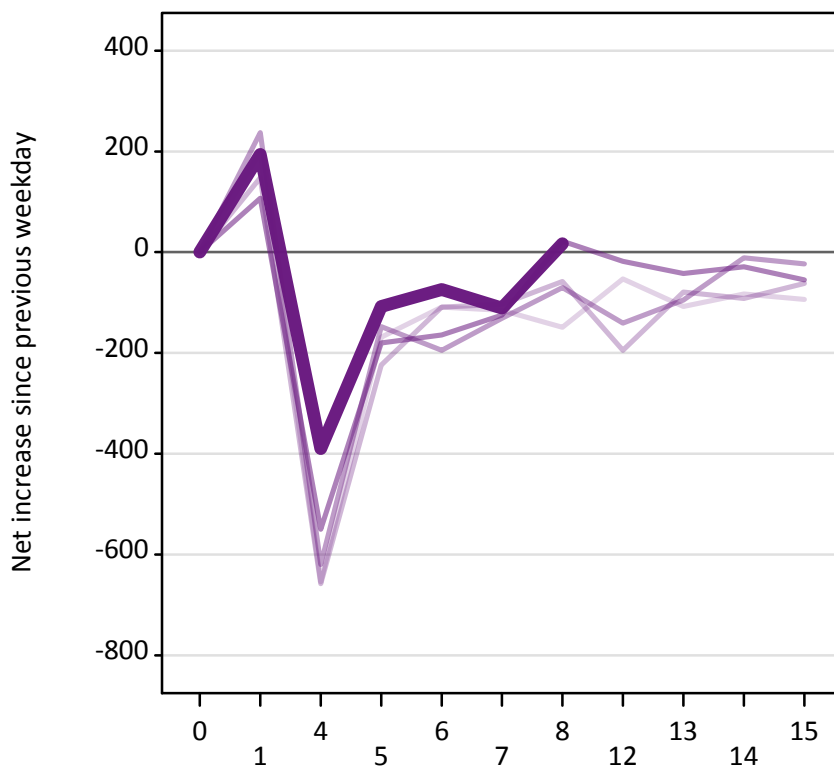
AB.23 Holding Offer: Daily net change (from all domiciles)

Net increase since previous weekday (2017 cycle up to 8 days after A level results day)

| Applicant status, days since A level results day | | 2013 | 2014 | 2015 | 2016 | 2017 |
|--|----|------|------|------|------|------|
| Holding Offer | 0 | 0 | 0 | 0 | 0 | 0 |
| | 1 | -820 | -700 | -860 | -740 | -910 |
| | 4 | -690 | -700 | -720 | -500 | -750 |
| | 5 | -340 | -330 | -300 | -310 | -250 |
| | 6 | -410 | -320 | -350 | -260 | -260 |
| | 7 | -360 | -320 | -240 | -240 | -230 |
| | 8 | -460 | -660 | -610 | -670 | -560 |
| | 12 | -460 | -460 | -810 | -570 | |
| | 13 | -230 | -260 | -290 | -390 | |
| | 14 | -220 | -280 | -240 | -370 | |
| | 15 | -230 | -240 | -210 | -300 | |

AB.24 Free to be placed in Clearing: Daily net change (from all domiciles)

Net increase since previous weekday (2017 cycle up to 8 days after A level results day)



AB.25 Free to be placed in Clearing: Daily net change (from all domiciles)

Net increase since previous weekday (2017 cycle up to 8 days after A level results day)

| Applicant status, days since A level results day | | 2013 | 2014 | 2015 | 2016 | 2017 |
|--|----|------|------|------|------|------|
| Free to be placed in Clearing | 0 | 0 | 0 | 0 | 0 | 0 |
| | 1 | 200 | 150 | 240 | 110 | 190 |
| | 4 | -650 | -660 | -620 | -550 | -390 |
| | 5 | -170 | -220 | -150 | -180 | -110 |
| | 6 | -110 | -110 | -200 | -160 | -70 |
| | 7 | -120 | -100 | -130 | -130 | -110 |
| | 8 | -150 | -60 | -70 | 20 | 20 |
| | 12 | -50 | -200 | -140 | -20 | |
| | 13 | -110 | -80 | -100 | -40 | |
| | 14 | -80 | -90 | -10 | -30 | |
| | 15 | -90 | -60 | -20 | -60 | |