

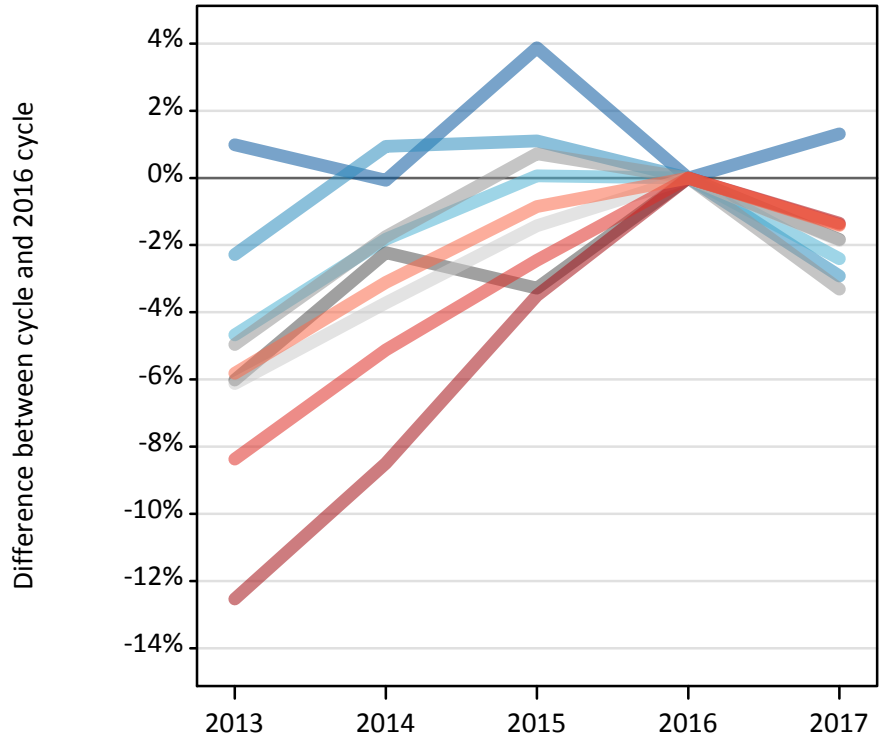
Daily Clearing Analysis: Region

Analysis at 00:05 on Friday 25 August 2017 (8 days after A level results day)

R.1 Placed applicants by region of domicile: 8 days after A level results day

Placed applicants: change relative to 2016 cycle totals

- North East
- North West
- Yorkshire and The Humber
- East Midlands
- West Midlands
- East of England
- London
- South East
- South West



R.2 Placed applicants by region of domicile: 8 days after A level results day

Applicant Status	Domicile	2013	2014	2015	2016	2017
Placed	North East	15,130	14,970	15,560	14,980	15,180
	North West	45,610	47,110	47,180	46,670	45,310
	Yorkshire and The Humber	31,280	32,210	32,830	32,810	32,020
	East Midlands	26,300	27,360	27,060	27,980	27,470
	West Midlands	35,950	37,170	38,100	37,830	36,580
	East of England	35,130	36,030	36,880	37,420	36,720
	London	61,080	63,900	67,390	69,830	68,900
	South East	54,170	56,080	57,660	59,110	58,300
	South West	31,220	32,110	32,860	33,140	32,670
	(England total)	335,850	346,940	355,540	359,780	353,140
	Scotland	28,090	28,910	31,830	33,140	33,850
	Northern Ireland	13,700	13,750	13,470	14,320	13,820
	Wales	17,700	18,440	18,780	18,990	18,540
	UK	395,340	408,040	419,620	426,220	419,350

R.3 Placed applicants by region of domicile: 8 days after A level results day

Placed applicants: change relative to 2016 cycle totals

Applicant Status	Domicile	2013	2014	2015	2016	2017
Placed	North East	1%	-0%	4%	0%	1%
	North West	-2%	1%	1%	0%	-3%
	Yorkshire and The Humber	-5%	-2%	0%	0%	-2%
	East Midlands	-6%	-2%	-3%	0%	-2%
	West Midlands	-5%	-2%	1%	0%	-3%
	East of England	-6%	-4%	-1%	0%	-2%
	London	-13%	-8%	-4%	0%	-1%
	South East	-8%	-5%	-2%	0%	-1%
	South West	-6%	-3%	-1%	0%	-1%
	(England total)	-7%	-4%	-1%	0%	-2%
	Scotland	-15%	-13%	-4%	0%	2%
	Northern Ireland	-4%	-4%	-6%	0%	-3%
	Wales	-7%	-3%	-1%	0%	-2%
	UK	-7%	-4%	-2%	0%	-2%

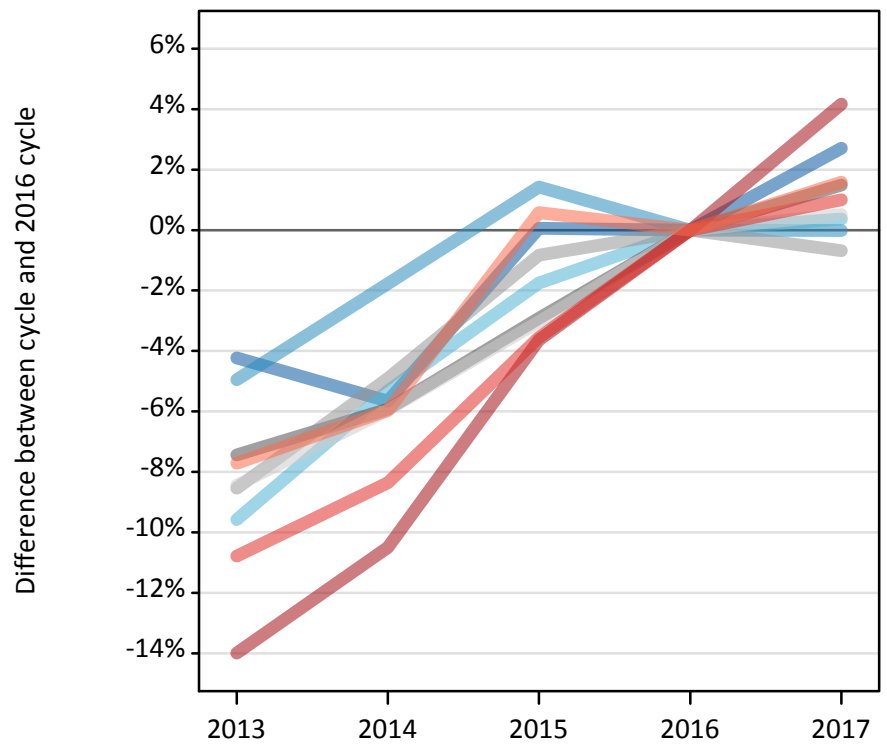
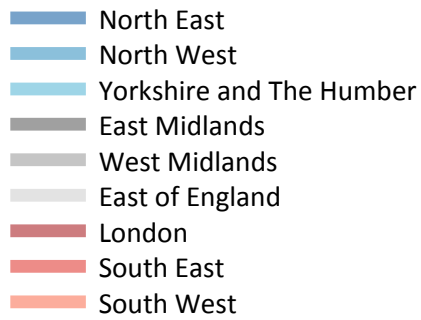
R.4 Placed applicants by region of domicile: 8 days after A level results day

Placed applicants: absolute change relative to 2016 cycle totals

Applicant Status	Domicile	2013	2014	2015	2016	2017
Placed	North East	150	-10	580	0	200
	North West	-1,060	440	510	0	-1,360
	Yorkshire and The Humber	-1,530	-600	20	0	-790
	East Midlands	-1,680	-620	-920	0	-510
	West Midlands	-1,880	-660	270	0	-1,250
	East of England	-2,290	-1,390	-530	0	-700
	London	-8,760	-5,930	-2,450	0	-940
	South East	-4,950	-3,030	-1,450	0	-820
	South West	-1,930	-1,030	-280	0	-470
	(England total)	-23,930	-12,840	-4,240	0	-6,640
	Scotland	-5,050	-4,230	-1,310	0	710
	Northern Ireland	-610	-560	-850	0	-490
	Wales	-1,290	-550	-200	0	-450
	UK	-30,870	-18,180	-6,600	0	-6,870

R.5 Placed 18 year old applicants by region of domicile: 8 days after A level results day

Placed 18 year old applicants: change relative to 2016 cycle totals



R.6 Placed 18 year old applicants by region of domicile: 8 days after A level results day

Applicant Status	Domicile	2013	2014	2015	2016	2017
Placed	North East	8,000	7,880	8,360	8,360	8,580
	North West	25,210	26,050	26,900	26,520	26,520
	Yorkshire and The Humber	17,150	17,960	18,640	18,970	19,040
	East Midlands	14,760	15,000	15,480	15,950	16,190
	West Midlands	19,360	20,130	21,000	21,170	21,030
	East of England	20,780	21,350	22,010	22,700	22,810
	London	31,040	32,310	34,780	36,100	37,600
	South East	31,120	31,970	33,640	34,880	35,230
	South West	15,880	16,180	17,310	17,210	17,480
	(England total)	183,310	188,830	198,120	201,850	204,470
	Scotland	14,080	14,290	14,400	14,650	14,620
	Northern Ireland	8,540	8,340	8,240	8,470	8,340
	Wales	9,570	9,950	10,380	10,520	10,190
	UK	215,510	221,410	231,140	235,480	237,620

R.7 Placed 18 year old applicants by region of domicile: 8 days after A level results day

Placed 18 year old applicants: change relative to 2016 cycle totals

Applicant Status	Domicile	2013	2014	2015	2016	2017
Placed	North East	-4%	-6%	0%	0%	3%
	North West	-5%	-2%	1%	0%	-0%
	Yorkshire and The Humber	-10%	-5%	-2%	0%	0%
	East Midlands	-7%	-6%	-3%	0%	1%
	West Midlands	-9%	-5%	-1%	0%	-1%
	East of England	-8%	-6%	-3%	0%	1%
	London	-14%	-10%	-4%	0%	4%
	South East	-11%	-8%	-4%	0%	1%
	South West	-8%	-6%	1%	0%	2%
	(England total)	-9%	-6%	-2%	0%	1%
	Scotland	-4%	-2%	-2%	0%	-0%
	Northern Ireland	1%	-1%	-3%	0%	-1%
	Wales	-9%	-5%	-1%	0%	-3%
	UK	-8%	-6%	-2%	0%	1%

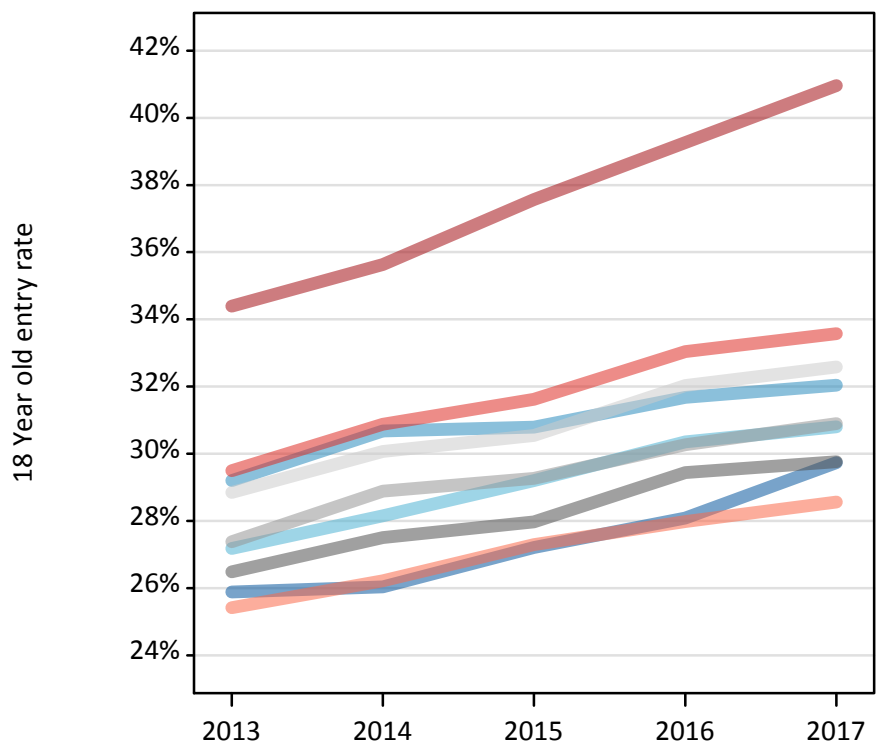
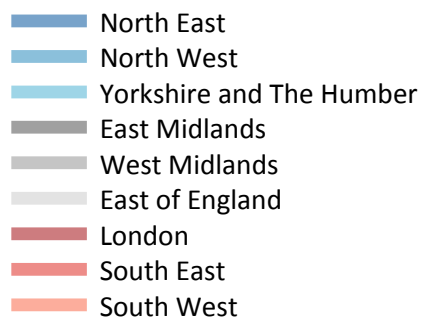
R.8 Placed 18 year old applicants by region of domicile: 8 days after A level results day

Placed 18 year old applicants: absolute change relative to 2016 cycle totals

Applicant Status	Domicile	2013	2014	2015	2016	2017
Placed	North East	-350	-470	10	0	230
	North West	-1,310	-470	380	0	-10
	Yorkshire and The Humber	-1,820	-1,010	-330	0	70
	East Midlands	-1,190	-940	-470	0	240
	West Midlands	-1,810	-1,040	-180	0	-150
	East of England	-1,920	-1,350	-690	0	120
	London	-5,050	-3,790	-1,310	0	1,500
	South East	-3,760	-2,920	-1,240	0	350
	South West	-1,330	-1,030	100	0	270
	(England total)	-18,540	-13,020	-3,730	0	2,620
	Scotland	-570	-350	-250	0	-20
	Northern Ireland	80	-130	-230	0	-130
	Wales	-950	-570	-140	0	-340
	UK	-19,980	-14,070	-4,350	0	2,140

R.9 Placed 18 year old applicants by region of domicile: 8 days after A level results day

Placed 18 year old applicants: entry rate



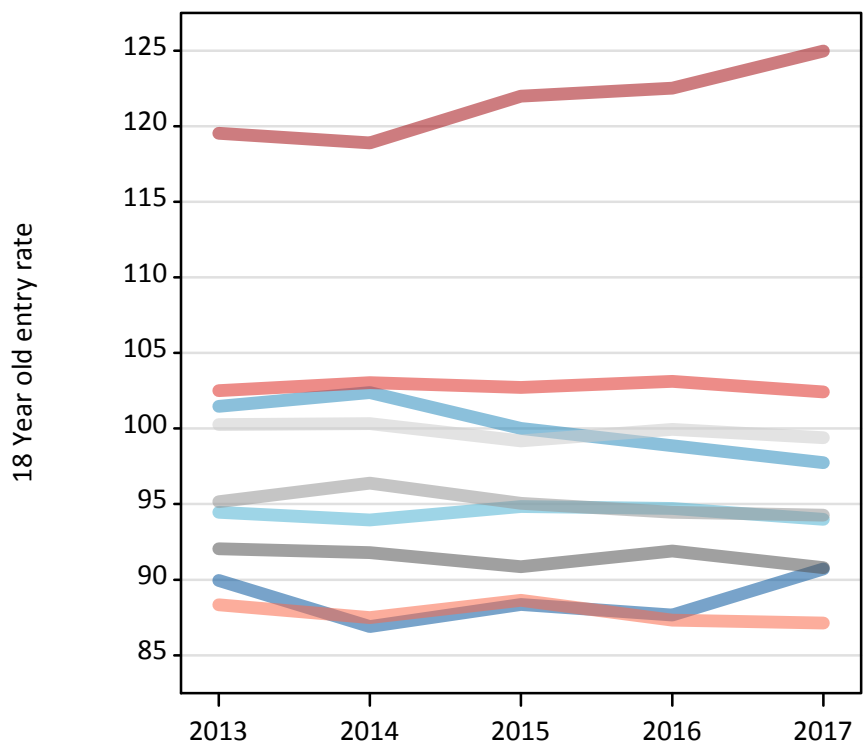
R.10 Placed 18 year old applicants by region of domicile: 8 days after A level results day

Placed 18 year old applicants: entry rate

Applicant Status	Domicile	2013	2014	2015	2016	2017
Placed	North East	25.9%	26.0%	27.2%	28.1%	29.7%
	North West	29.2%	30.7%	30.8%	31.7%	32.0%
	Yorkshire and The Humber	27.2%	28.2%	29.2%	30.3%	30.8%
	East Midlands	26.5%	27.5%	28.0%	29.4%	29.8%
	West Midlands	27.4%	28.9%	29.3%	30.3%	30.9%
	East of England	28.8%	30.1%	30.5%	32.0%	32.6%
	London	34.4%	35.6%	37.6%	39.3%	41.0%
	South East	29.5%	30.9%	31.6%	33.0%	33.6%
	South West	25.4%	26.2%	27.3%	28.0%	28.6%
	(England total)	28.8%	30.0%	30.8%	32.0%	32.8%
	Scotland	22.9%	23.3%	23.9%	24.9%	25.5%
	Northern Ireland	34.8%	34.4%	33.2%	34.6%	34.5%
	Wales	25.3%	26.5%	27.6%	29.0%	28.7%
	UK	28.3%	29.4%	30.2%	31.4%	32.1%

R.11 Placed 18 year old applicants by region of domicile: 8 days after A level results day

Placed 18 year old applicants: entry rates (indexed to 100 = England)



R.12 Placed 18 year old applicants by region of domicile: 8 days after A level results day

Placed 18 year old applicants: entry rate (indexed to 100 = England)

Applicant Status	Domicile	2013	2014	2015	2016	2017
Placed	North East	90	87	88	88	91
	North West	101	102	100	99	98
	Yorkshire and The Humber	94	94	95	95	94
	East Midlands	92	92	91	92	91
	West Midlands	95	96	95	94	94
	East of England	100	100	99	100	99
	London	120	119	122	123	125
	South East	103	103	103	103	102
	South West	88	87	89	87	87
	(England total)	100	100	100	100	100