

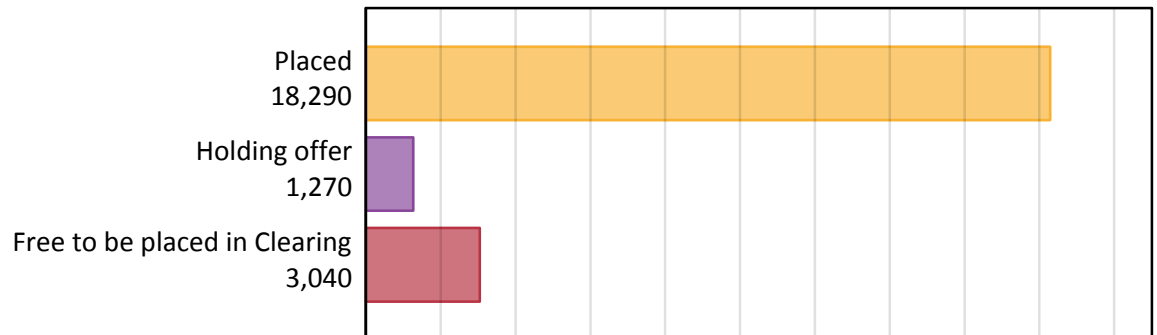
# Daily Clearing Analysis: Overview

Analysis at 00:05 on Wednesday 23 August 2017 (6 days after A level results day)

## A.1 Applicants by type and status from Wales, 2017 cycle

Applicant type	Status	2017
Main scheme	Placed (Clearing)	1,070
	Placed (Adjustment)	30
	Placed (Firm)	15,280
	Placed (Insurance)	1,030
	Placed (Other)	560
	Holding offer	1,270
	Free to be placed in Clearing	3,040
Direct to Clearing	Placed (Direct to Clearing)	320
	Other (Direct to Clearing)	320
All applicants	Placed	18,290

## A.2 Summary of applicants who are placed, holding offers or free to be placed in Clearing ( Wales )



### A.3 All placed applicants from Wales: 6 days after A level results day

All placed applicants: difference between cycle and 2016 cycle

Placed



### A.4 All placed applicants from Wales: 6 days after A level results day

All placed applicants: applicants at 6 days after A level results day

Applicant type	Status	2013	2014	2015	2016	2017
All applicants	Placed	17,400	18,150	18,490	18,720	18,290

### A.5 All placed applicants from Wales: 6 days after A level results day

All placed applicants: difference between cycle and 2016 cycle

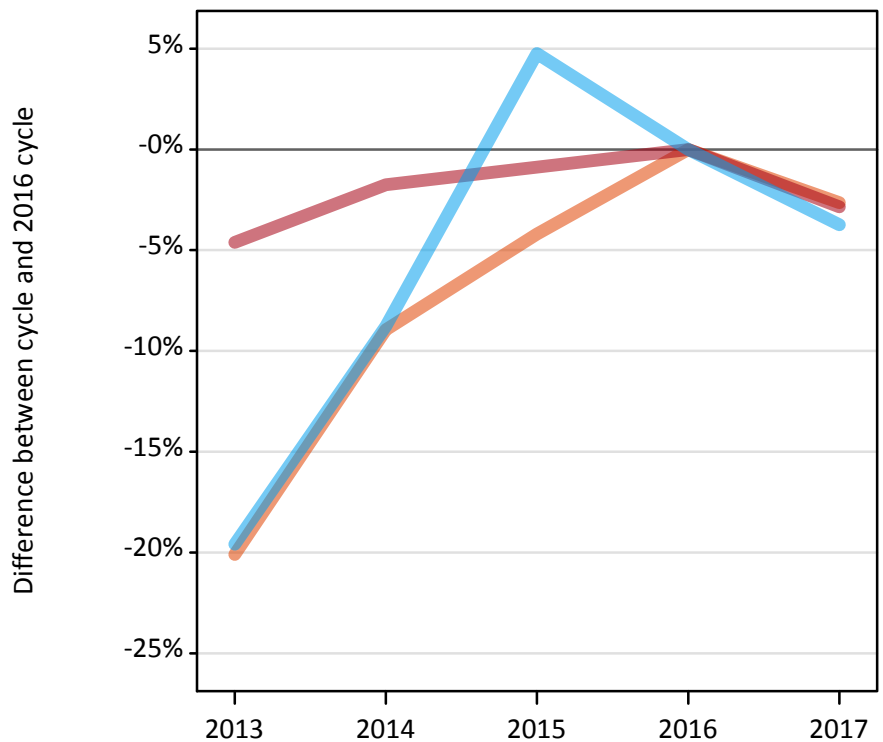
Applicant type	Status	2013	2014	2015	2016	2017
All applicants	Placed	-7%	-3%	-1%	0%	-2%

Note: Percentage changes are not plotted for lines with, on average, fewer than 30 applicants per year. As a result, lines for some, or all, of the states may be missing.

### A.6 Placed main scheme applicants from Wales: 6 days after A level results day

Selected placed routes: difference between cycle and 2016 cycle

- Placed (Clearing)
- Placed (Firm)
- Placed (Insurance)



### A.7 Placed main scheme applicants from Wales: 6 days after A level results day

All Main scheme placed routes (excluding Adjustment): applicants at 6 days after A level results day

Applicant type	Status	2013	2014	2015	2016	2017
Main scheme	Placed (Clearing)	880	1,000	1,050	1,100	1,070
	Placed (Firm)	15,000	15,450	15,590	15,730	15,280
	Placed (Insurance)	860	980	1,120	1,070	1,030
	Placed (Other)	400	470	470	530	560

### A.8 Placed main scheme applicants from Wales: 6 days after A level results day

Selected placed routes: difference between cycle and 2016 cycle

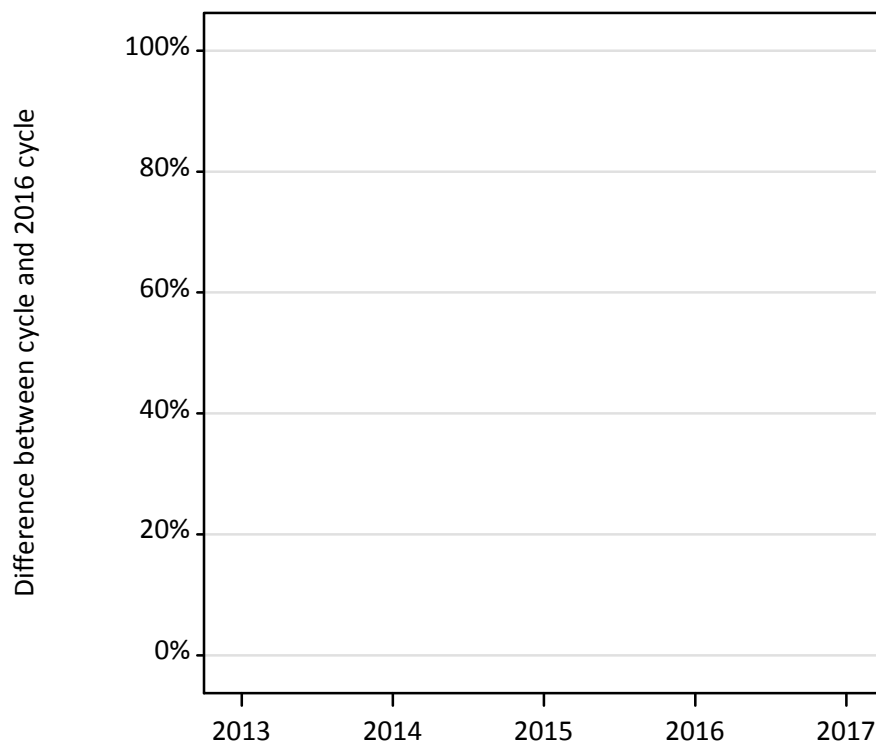
Applicant type	Status	2013	2014	2015	2016	2017
Main scheme	Placed (Clearing)	-20%	-9%	-4%	0%	-3%
	Placed (Firm)	-5%	-2%	-1%	0%	-3%
	Placed (Insurance)	-20%	-9%	5%	0%	-4%

Note: Percentage changes are not plotted for lines with, on average, fewer than 30 applicants per year. As a result, lines for some, or all, of the states may be missing.

### A.9 Main scheme applicants placed through adjustment: 6 days after A level results day

Placed through adjustment: difference between cycle and 2016 cycle

Placed (Adjustment)



### A.10 Main scheme applicants placed through adjustment: 6 days after A level results day

Placed through adjustment: applicants at 6 days after A level results day

Applicant type	Status	2013	2014	2015	2016	2017
Main scheme	Placed (Adjustment)	30	30	30	20	30

### A.11 Main scheme applicants placed through adjustment: 6 days after A level results day

Placed through adjustment: difference between cycle and 2016 cycle

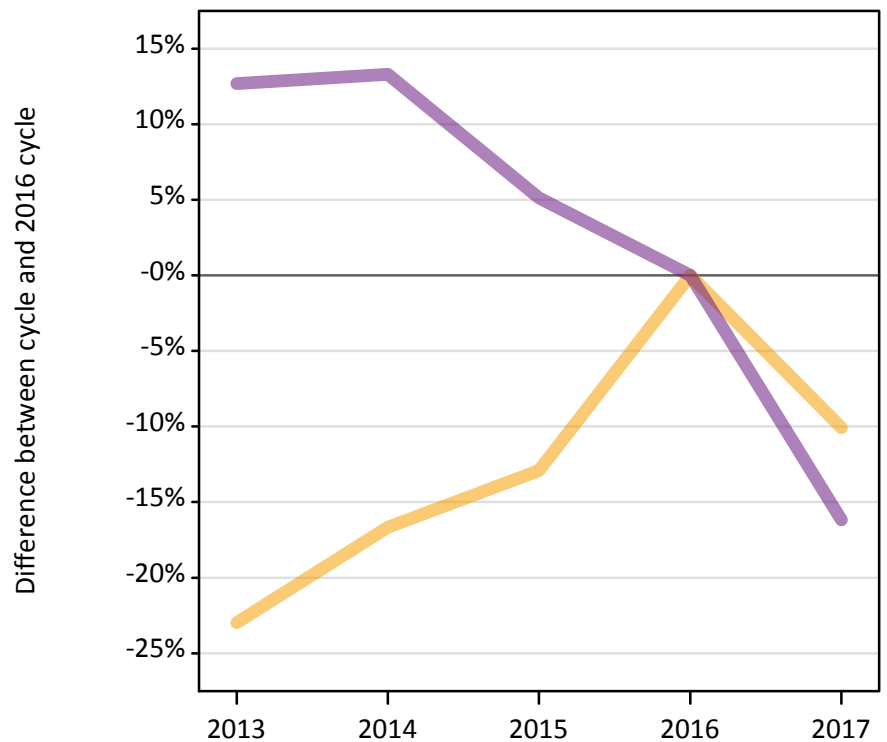
Applicant type	Status	2013	2014	2015	2016	2017
Main scheme	Placed (Adjustment)	35%	60%	40%	0%	70%

Note: Percentage changes are not plotted for lines with, on average, fewer than 30 applicants per year. As a result, lines for some, or all, of the states may be missing.

### A.12 Main scheme applicants not currently placed from Wales: 6 days after A level results day

Applicants in unplaced states: difference between cycle and 2016 cycle

— Holding offer  
— Free to be placed in Clearing



### A.13 Main scheme applicants not currently placed from Wales: 6 days after A level results day

Applicants in unplaced states: applicants at 6 days after A level results day

Applicant type	Status	2013	2014	2015	2016	2017
Main scheme	Holding offer	1,090	1,180	1,230	1,410	1,270
	Free to be placed in Clearing	4,090	4,110	3,820	3,630	3,040

### A.14 Main scheme applicants not currently placed from Wales: 6 days after A level results day

Applicants in unplaced states: difference between cycle and 2016 cycle

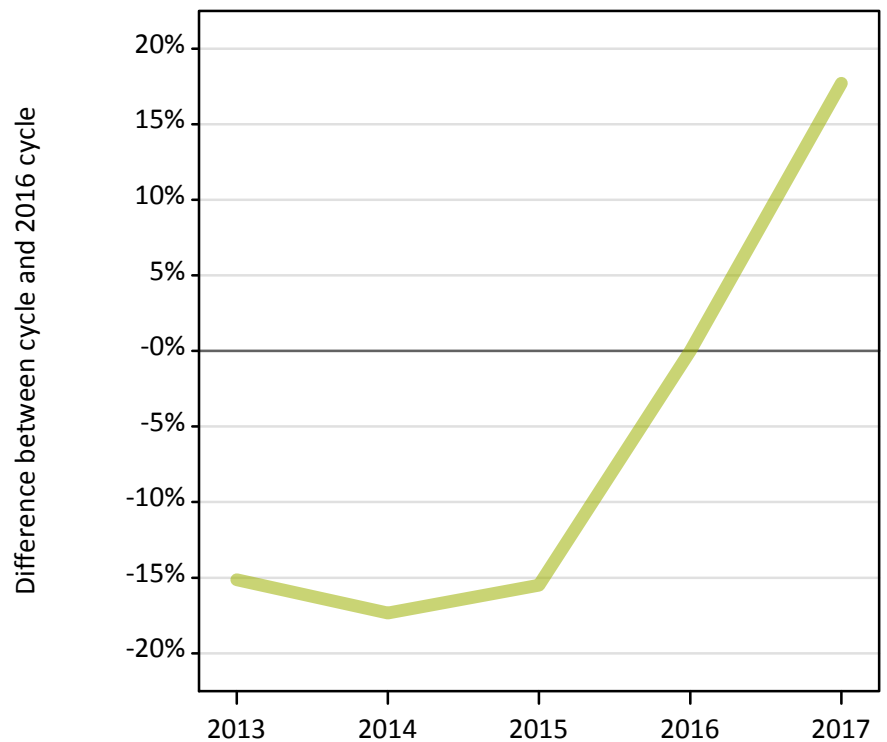
Applicant type	Status	2013	2014	2015	2016	2017
Main scheme	Holding offer	-23%	-17%	-13%	0%	-10%
	Free to be placed in Clearing	13%	13%	5%	0%	-16%

Note: Percentage changes are not plotted for lines with, on average, fewer than 30 applicants per year. As a result, lines for some, or all, of the states may be missing.

### A.15 Direct to Clearing applicants from Wales: 6 days after A level results day

Placed (Direct to Clearing): difference between cycle and 2016 cycle

Placed (Direct to Clearing)



### A.16 Direct to Clearing applicants from Wales: 6 days after A level results day

Direct to Clearing 6 days after A level results day

Applicant type	Status	2013	2014	2015	2016	2017
Direct to Clearing	Placed (Direct to Clearing)	230	220	230	270	320
	Other (Direct to Clearing)	250	280	300	240	320

### A.17 Direct to Clearing applicants from Wales: 6 days after A level results day

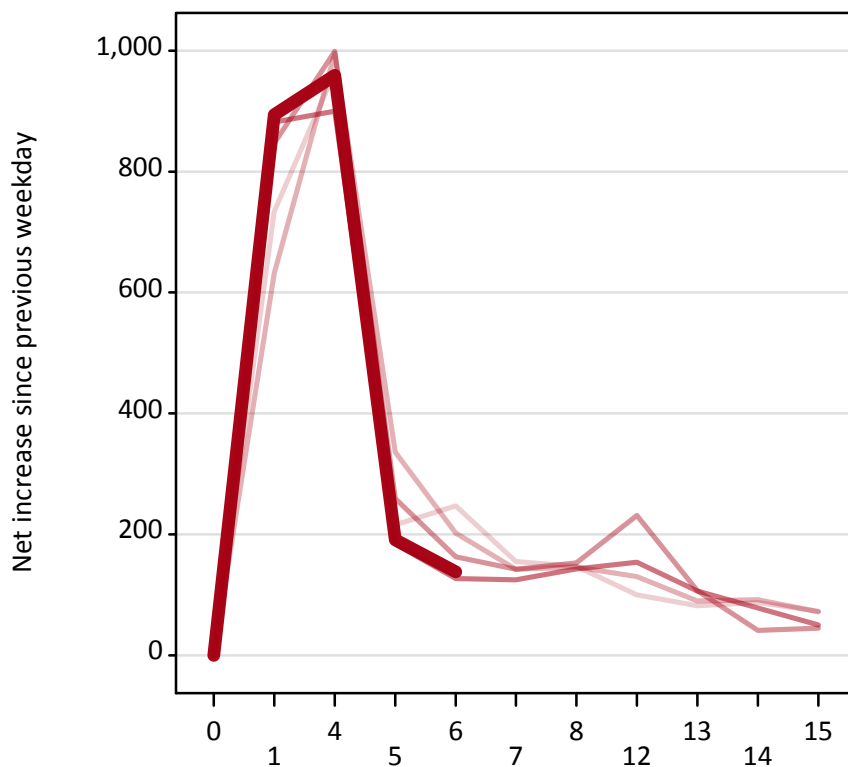
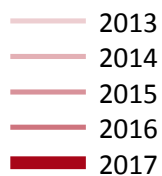
Placed (Direct to Clearing): difference between cycle and 2016 cycle

Applicant type	Status	2013	2014	2015	2016	2017
Direct to Clearing	Placed (Direct to Clearing)	-15%	-17%	-15%	0%	18%

Note: Percentage changes are not plotted for lines with, on average, fewer than 30 applicants per year. As a result, lines for some, or all, of the states may be missing.

### A.18 All Placed: Daily net change (from Wales)

Net increase since previous weekday (2017 cycle up to 6 days after A level results day)



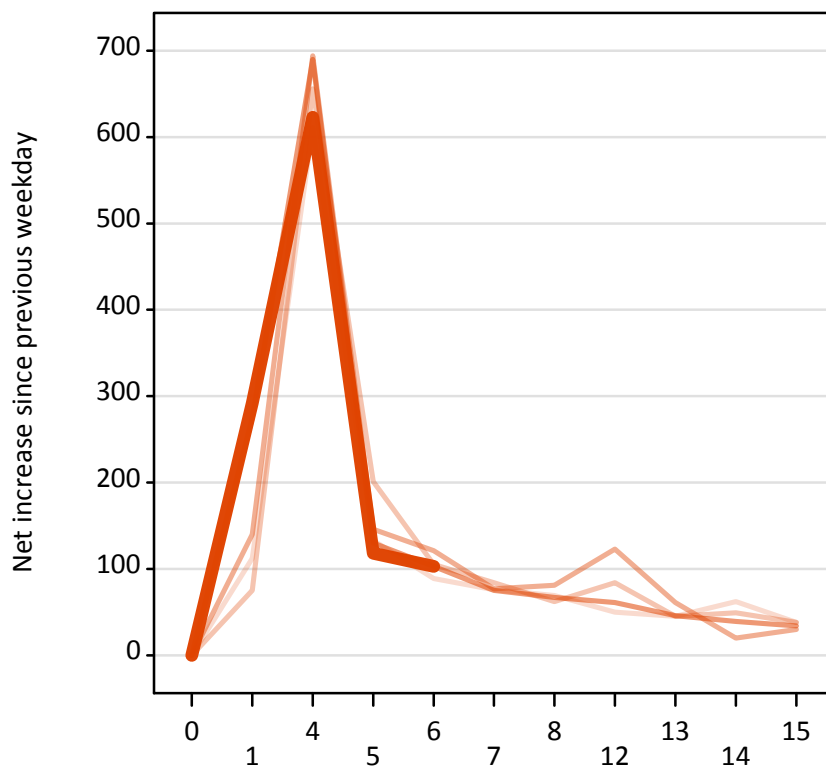
### A.19 All Placed: Daily net change (from Wales)

Net increase since previous weekday (2017 cycle up to 6 days after A level results day)

Applicant status, days since A level results day		2013	2014	2015	2016	2017
All Placed	0	0	0	0	0	0
	1	730	630	850	880	890
	4	970	1,000	1,000	900	960
	5	220	340	260	180	190
	6	250	200	160	130	140
	7	160	140	140	130	
	8	150	150	150	140	
	12	100	130	230	150	
	13	80	90	110	110	
	14	90	90	40	80	
	15	70	70	50	50	

### A.20 Placed through Clearing only: Daily net change (from Wales)

Net increase since previous weekday (2017 cycle up to 6 days after A level results day)



### A.21 Placed through Clearing only: Daily net change (from Wales)

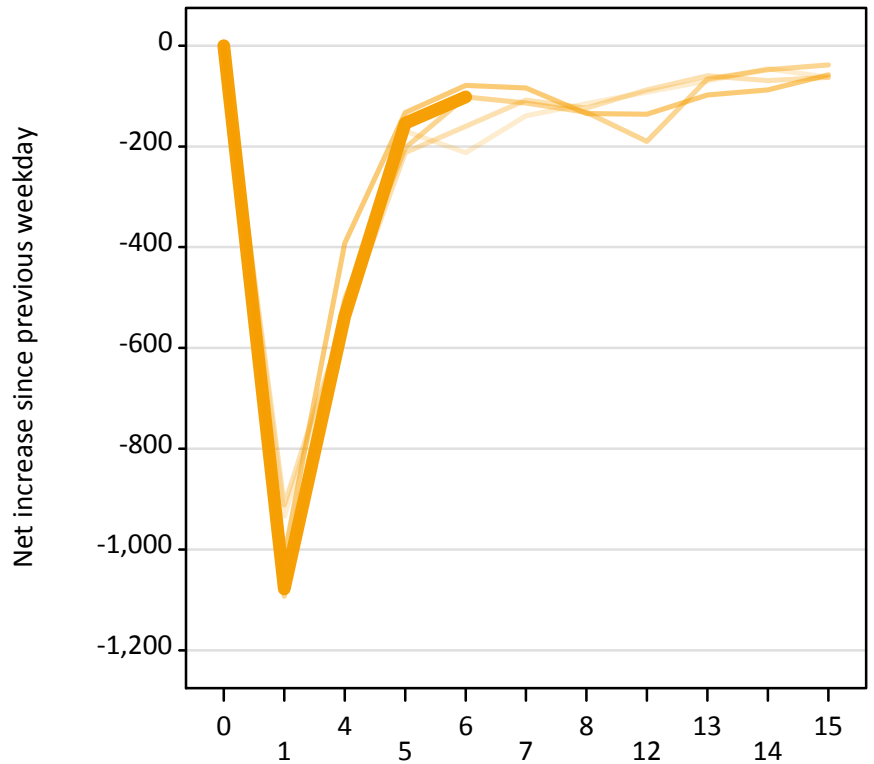
Net increase since previous weekday (2017 cycle up to 6 days after A level results day)

Applicant status, days since A level results day		2013	2014	2015	2016	2017
Placed through Clearing only	0	0	0	0	0	0
	1	110	80	140	280	290
	4	610	660	690	690	620
	5	130	200	150	130	120
	6	90	110	120	100	100
	7	80	80	80	80	
	8	70	60	80	70	
	12	50	80	120	60	
	13	50	50	60	50	
	14	60	50	20	40	
	15	40	40	30	30	



### A.22 Holding Offer: Daily net change (from Wales)

Net increase since previous weekday (2017 cycle up to 6 days after A level results day)



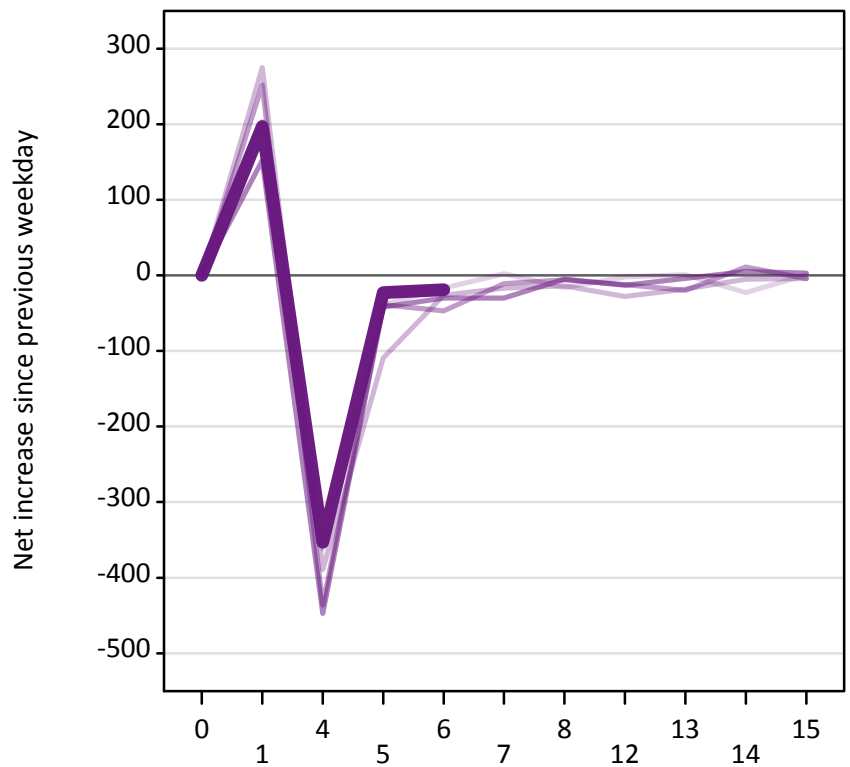
### A.23 Holding Offer: Daily net change (from Wales)

Net increase since previous weekday (2017 cycle up to 6 days after A level results day)

Applicant status, days since A level results day		2013	2014	2015	2016	2017
Holding Offer	0	0	0	0	0	0
	1	-930	-910	-1,090	-1,010	-1,080
	4	-540	-540	-500	-390	-540
	5	-170	-210	-200	-130	-150
	6	-210	-160	-100	-80	-100
	7	-140	-110	-110	-80	
	8	-120	-120	-130	-140	
	12	-90	-90	-190	-140	
	13	-70	-60	-70	-100	
	14	-50	-70	-50	-90	
	15	-60	-60	-40	-60	

### A.24 Free to be placed in Clearing: Daily net change (from Wales)

Net increase since previous weekday (2017 cycle up to 6 days after A level results day)



### A.25 Free to be placed in Clearing: Daily net change (from Wales)

Net increase since previous weekday (2017 cycle up to 6 days after A level results day)

Applicant status, days since A level results day		2013	2014	2015	2016	2017
Free to be placed in Clearing	0	0	0	0	0	0
	1	200	280	250	150	200
	4	-360	-390	-440	-450	-350
	5	-40	-110	-40	-40	-20
	6	-20	-30	-50	-30	-20
	7	0	-20	-10	-30	
	8	-20	-10	-10	-10	
	12	0	-30	-10	-10	
	13	0	-20	-20	0	
	14	-20	-10	10	10	
	15	0	0	0	0	