

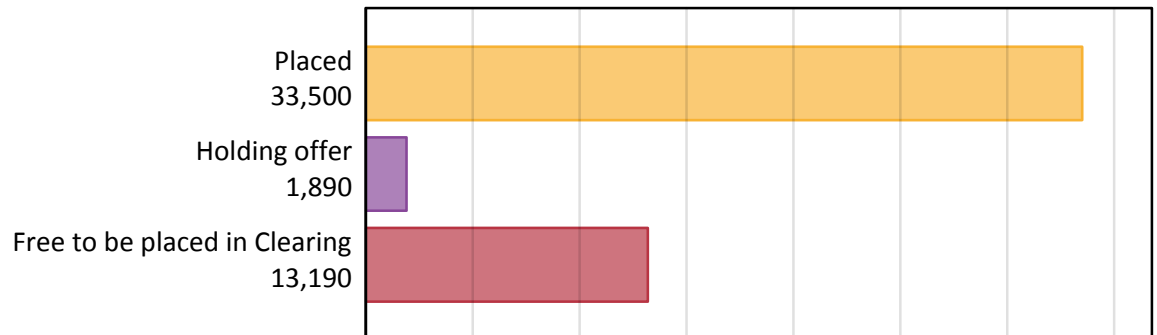
Daily Clearing Analysis: Overview

Analysis at 00:05 on Wednesday 23 August 2017 (6 days after A level results day)

A.1 Applicants by type and status from Scotland, 2017 cycle

Applicant type	Status	2017
Main scheme	Placed (Clearing)	1,040
	Placed (Adjustment)	0
	Placed (Firm)	30,080
	Placed (Insurance)	1,460
	Placed (Other)	670
	Holding offer	1,890
	Free to be placed in Clearing	13,190
Direct to Clearing	Placed (Direct to Clearing)	250
	Other (Direct to Clearing)	350
All applicants	Placed	33,500

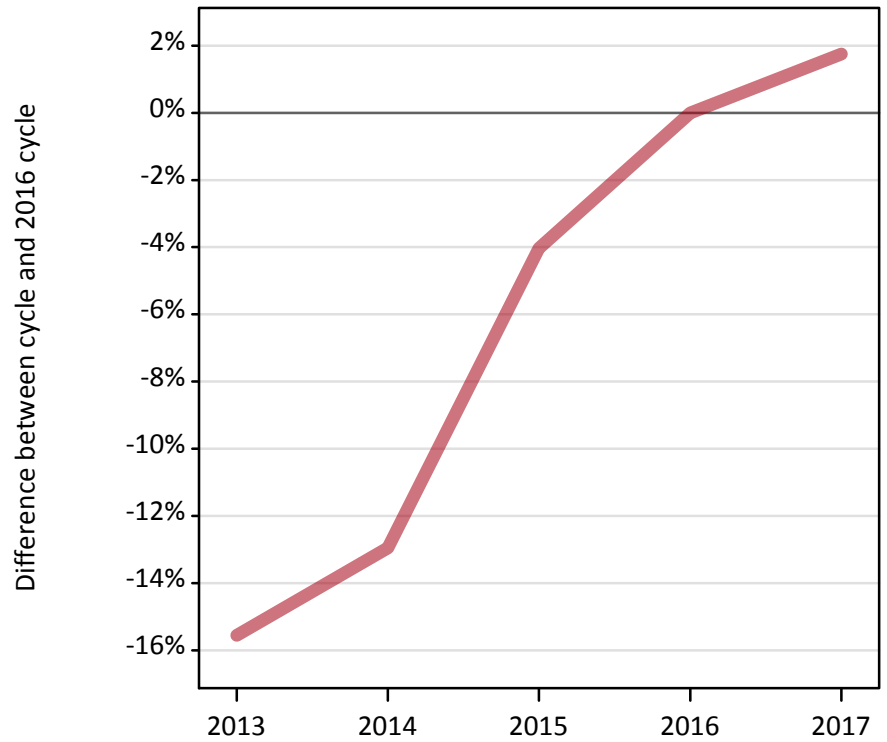
A.2 Summary of applicants who are placed, holding offers or free to be placed in Clearing (Scotland)



A.3 All placed applicants from Scotland: 6 days after A level results day

All placed applicants: difference between cycle and 2016 cycle

Placed



A.4 All placed applicants from Scotland: 6 days after A level results day

All placed applicants: applicants at 6 days after A level results day

Applicant type	Status	2013	2014	2015	2016	2017
All applicants	Placed	27,800	28,660	31,600	32,920	33,500

A.5 All placed applicants from Scotland: 6 days after A level results day

All placed applicants: difference between cycle and 2016 cycle

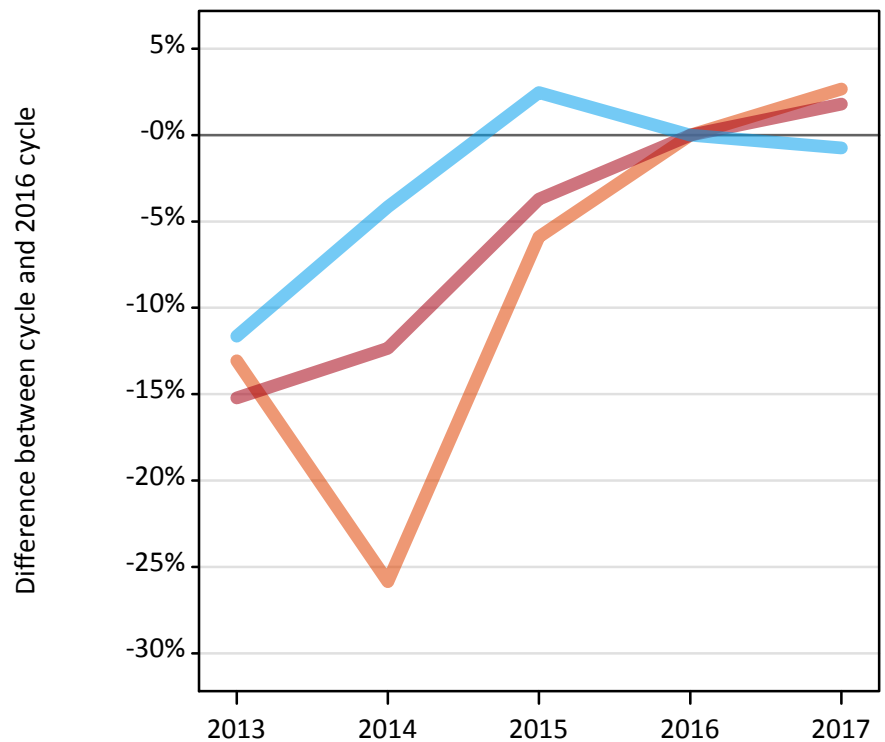
Applicant type	Status	2013	2014	2015	2016	2017
All applicants	Placed	-16%	-13%	-4%	0%	2%

Note: Percentage changes are not plotted for lines with, on average, fewer than 30 applicants per year. As a result, lines for some, or all, of the states may be missing.

A.6 Placed main scheme applicants from Scotland: 6 days after A level results day

Selected placed routes: difference between cycle and 2016 cycle

- Placed (Clearing)
- Placed (Firm)
- Placed (Insurance)



A.7 Placed main scheme applicants from Scotland: 6 days after A level results day

All Main scheme placed routes (excluding Adjustment): applicants at 6 days after A level results day

Applicant type	Status	2013	2014	2015	2016	2017
Main scheme	Placed (Clearing)	880	750	960	1,020	1,040
	Placed (Firm)	25,060	25,910	28,450	29,550	30,080
	Placed (Insurance)	1,300	1,410	1,500	1,470	1,460
	Placed (Other)	460	490	540	650	670

A.8 Placed main scheme applicants from Scotland: 6 days after A level results day

Selected placed routes: difference between cycle and 2016 cycle

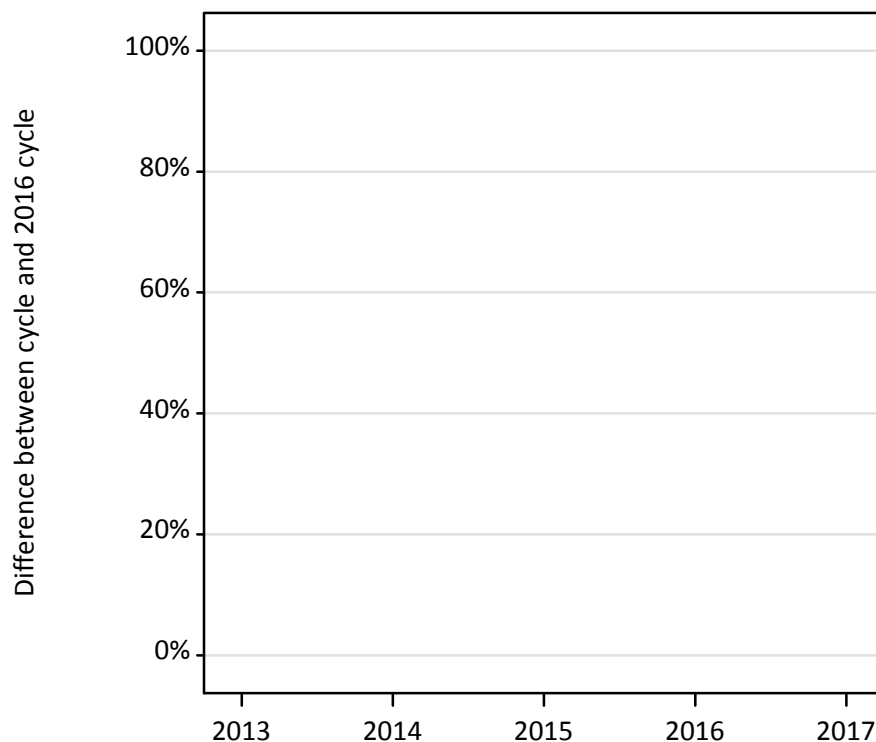
Applicant type	Status	2013	2014	2015	2016	2017
Main scheme	Placed (Clearing)	-13%	-26%	-6%	0%	3%
	Placed (Firm)	-15%	-12%	-4%	0%	2%
	Placed (Insurance)	-12%	-4%	2%	0%	-1%

Note: Percentage changes are not plotted for lines with, on average, fewer than 30 applicants per year. As a result, lines for some, or all, of the states may be missing.

A.9 Main scheme applicants placed through adjustment: 6 days after A level results day

Placed through adjustment: difference between cycle and 2016 cycle

Placed (Adjustment)



A.10 Main scheme applicants placed through adjustment: 6 days after A level results day

Placed through adjustment: applicants at 6 days after A level results day

Applicant type	Status	2013	2014	2015	2016	2017
Main scheme	Placed (Adjustment)	10	10	10	10	0

A.11 Main scheme applicants placed through adjustment: 6 days after A level results day

Placed through adjustment: difference between cycle and 2016 cycle

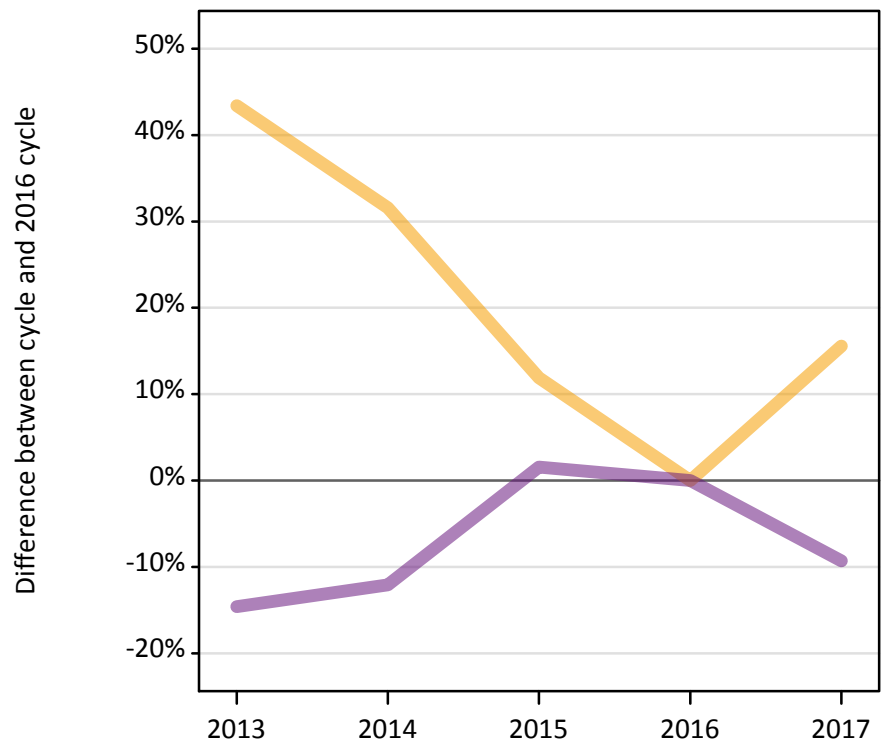
Applicant type	Status	2013	2014	2015	2016	2017
Main scheme	Placed (Adjustment)	22%	33%	-44%	0%	-78%

Note: Percentage changes are not plotted for lines with, on average, fewer than 30 applicants per year. As a result, lines for some, or all, of the states may be missing.

A.12 Main scheme applicants not currently placed from Scotland: 6 days after A level results day

Applicants in unplaced states: difference between cycle and 2016 cycle

— Holding offer
— Free to be placed in Clearing



A.13 Main scheme applicants not currently placed from Scotland: 6 days after A level results day

Applicants in unplaced states: applicants at 6 days after A level results day

Applicant type	Status	2013	2014	2015	2016	2017
Main scheme	Holding offer	2,350	2,160	1,830	1,640	1,890
	Free to be placed in Clearing	12,420	12,780	14,770	14,540	13,190

A.14 Main scheme applicants not currently placed from Scotland: 6 days after A level results day

Applicants in unplaced states: difference between cycle and 2016 cycle

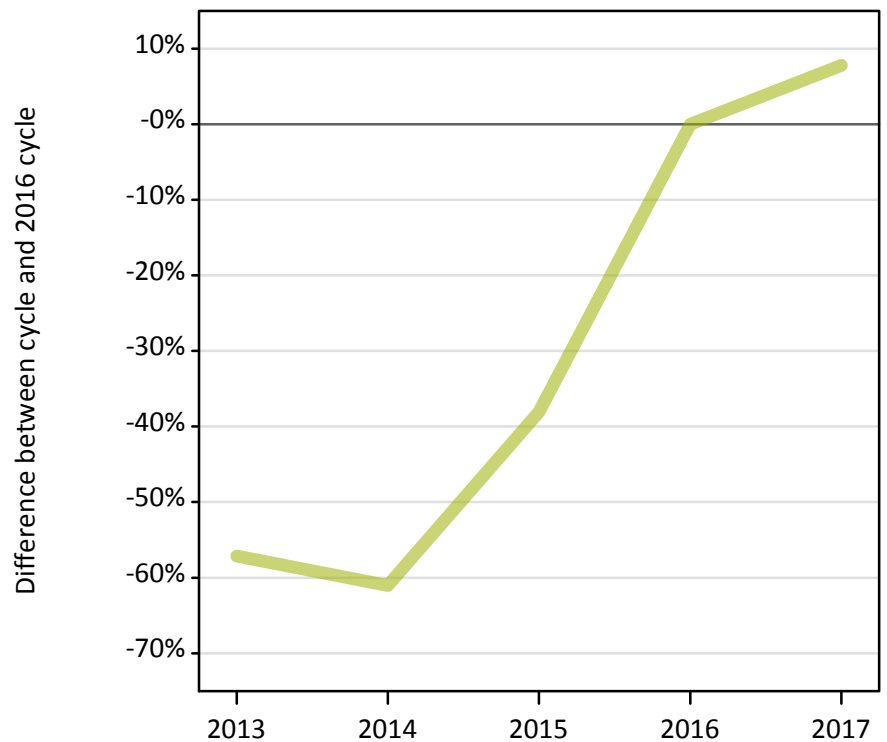
Applicant type	Status	2013	2014	2015	2016	2017
Main scheme	Holding offer	43%	32%	12%	0%	16%
	Free to be placed in Clearing	-15%	-12%	2%	0%	-9%

Note: Percentage changes are not plotted for lines with, on average, fewer than 30 applicants per year. As a result, lines for some, or all, of the states may be missing.

A.15 Direct to Clearing applicants from Scotland: 6 days after A level results day

Placed (Direct to Clearing): difference between cycle and 2016 cycle

Placed (Direct to Clearing)



A.16 Direct to Clearing applicants from Scotland: 6 days after A level results day

Direct to Clearing 6 days after A level results day

Applicant type	Status	2013	2014	2015	2016	2017
Direct to Clearing	Placed (Direct to Clearing)	100	90	140	230	250
	Other (Direct to Clearing)	290	250	350	370	350

A.17 Direct to Clearing applicants from Scotland: 6 days after A level results day

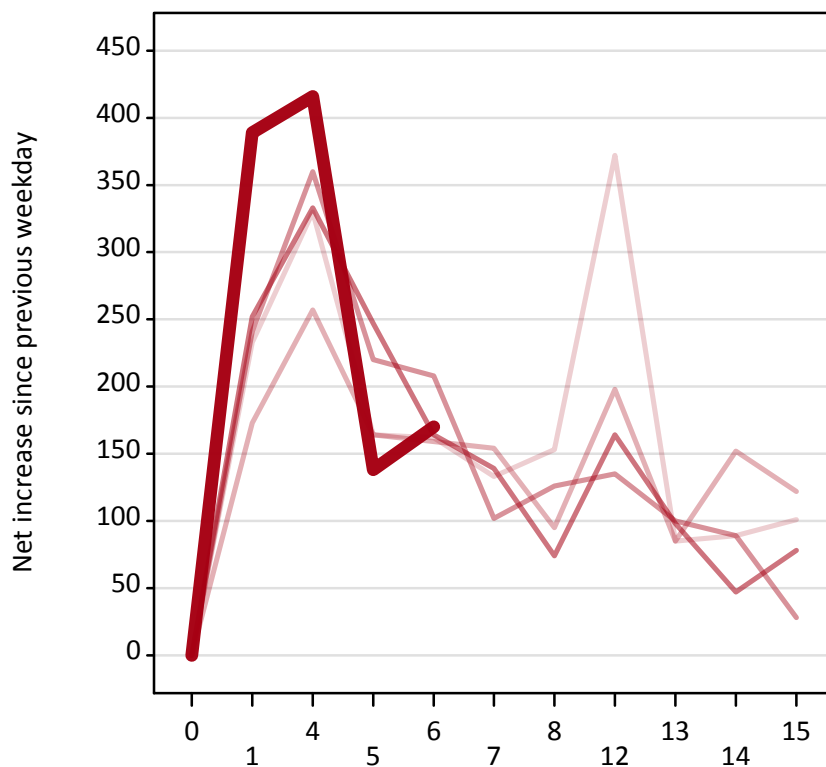
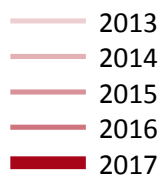
Placed (Direct to Clearing): difference between cycle and 2016 cycle

Applicant type	Status	2013	2014	2015	2016	2017
Direct to Clearing	Placed (Direct to Clearing)	-57%	-61%	-38%	0%	8%

Note: Percentage changes are not plotted for lines with, on average, fewer than 30 applicants per year. As a result, lines for some, or all, of the states may be missing.

A.18 All Placed: Daily net change (from Scotland)

Net increase since previous weekday (2017 cycle up to 6 days after A level results day)



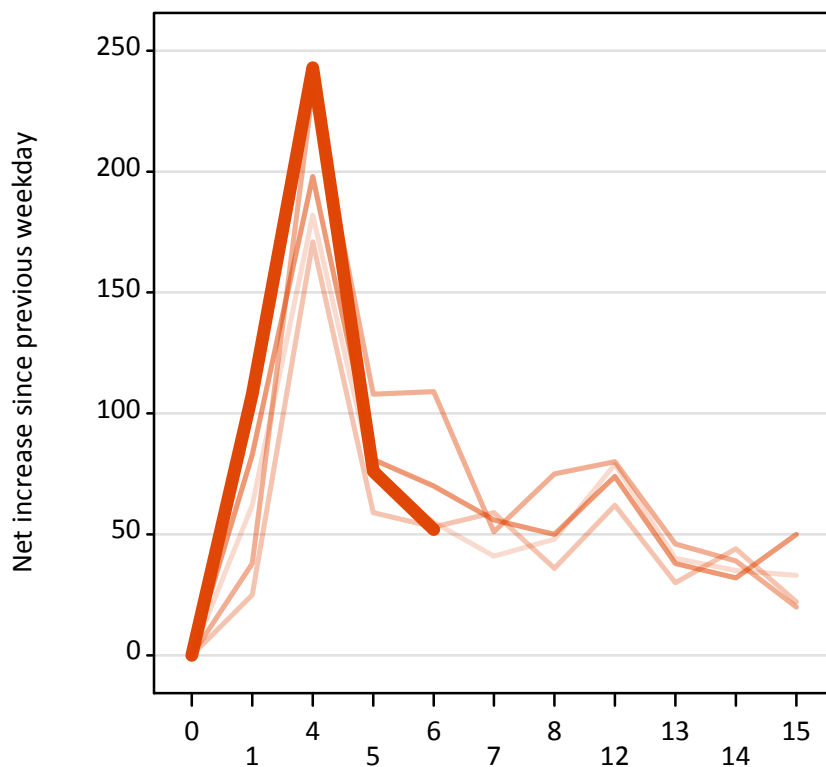
A.19 All Placed: Daily net change (from Scotland)

Net increase since previous weekday (2017 cycle up to 6 days after A level results day)

Applicant status, days since A level results day		2013	2014	2015	2016	2017
All Placed	0	0	0	0	0	0
	1	230	170	240	250	390
	4	330	260	360	330	420
	5	160	160	220	250	140
	6	160	160	210	160	170
	7	130	150	100	140	
	8	150	100	130	70	
	12	370	200	140	160	
	13	90	90	100	100	
	14	90	150	90	50	
	15	100	120	30	80	

A.20 Placed through Clearing only: Daily net change (from Scotland)

Net increase since previous weekday (2017 cycle up to 6 days after A level results day)



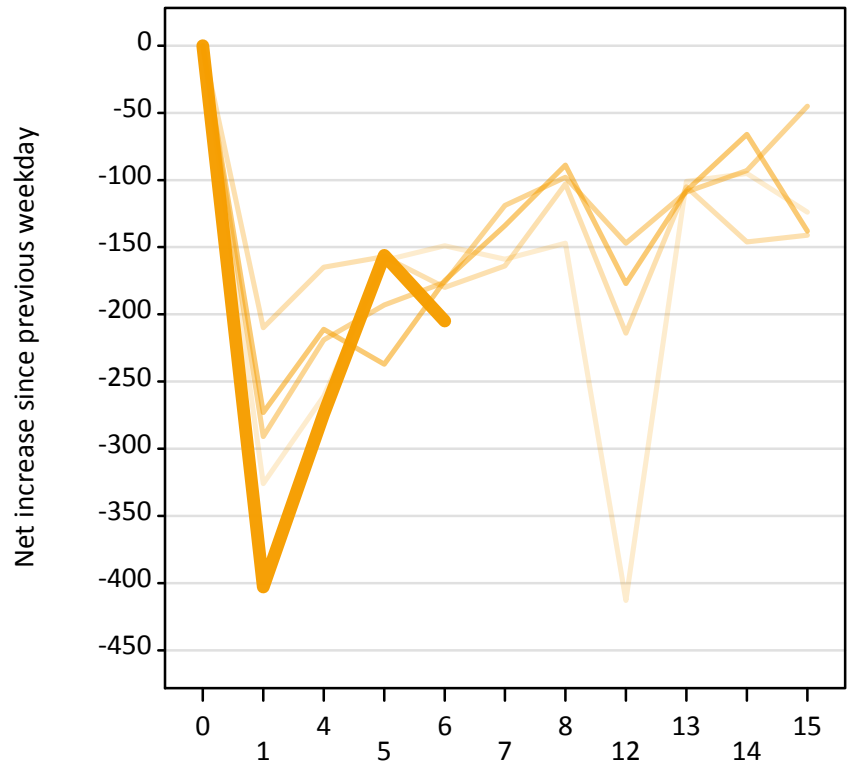
A.21 Placed through Clearing only: Daily net change (from Scotland)

Net increase since previous weekday (2017 cycle up to 6 days after A level results day)

Applicant status, days since A level results day		2013	2014	2015	2016	2017
Placed through Clearing only	0	0	0	0	0	0
	1	60	30	40	80	110
	4	180	170	230	200	240
	5	70	60	110	80	80
	6	60	50	110	70	50
	7	40	60	50	60	
	8	50	40	80	50	
	12	80	60	80	70	
	13	40	30	50	40	
	14	40	40	40	30	
	15	30	20	20	50	

A.22 Holding Offer: Daily net change (from Scotland)

Net increase since previous weekday (2017 cycle up to 6 days after A level results day)



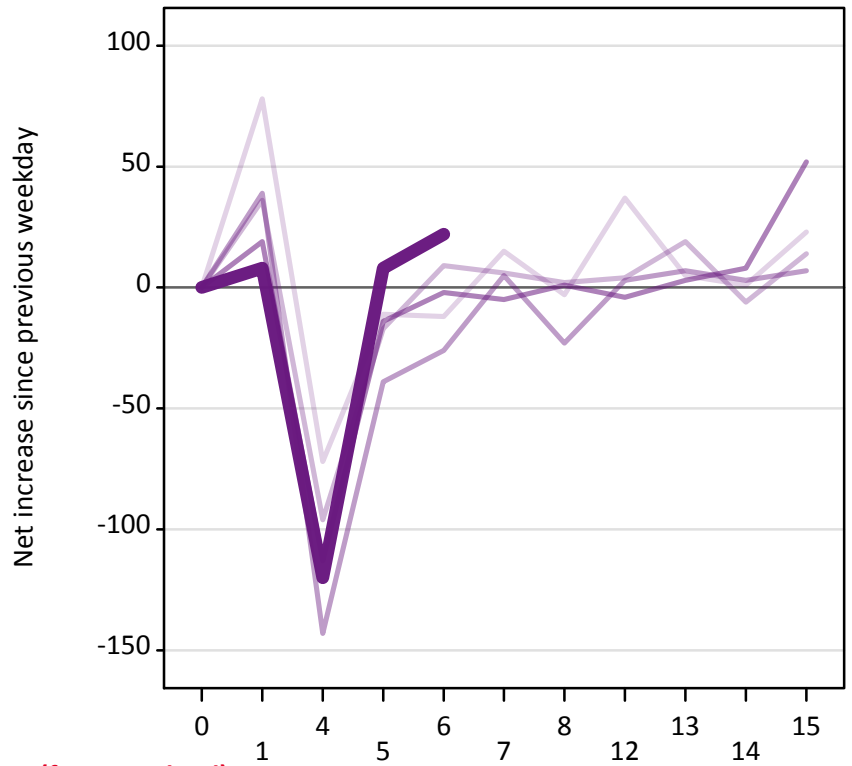
A.23 Holding Offer: Daily net change (from Scotland)

Net increase since previous weekday (2017 cycle up to 6 days after A level results day)

Applicant status, days since A level results day		2013	2014	2015	2016	2017
Holding Offer	0	0	0	0	0	0
	1	-330	-210	-290	-270	-400
	4	-260	-170	-220	-210	-270
	5	-160	-160	-190	-240	-160
	6	-150	-180	-180	-180	-210
	7	-160	-160	-120	-130	
	8	-150	-100	-100	-90	
	12	-410	-210	-150	-180	
	13	-100	-110	-110	-110	
	14	-100	-150	-90	-70	
	15	-120	-140	-50	-140	

A.24 Free to be placed in Clearing: Daily net change (from Scotland)

Net increase since previous weekday (2017 cycle up to 6 days after A level results day)



A.25 Free to be placed in Clearing: Daily net change (from Scotland)

Net increase since previous weekday (2017 cycle up to 6 days after A level results day)

Applicant status, days since A level results day		2013	2014	2015	2016	2017
Free to be placed in Clearing	0	0	0	0	0	0
	1	80	40	40	20	10
	4	-70	-100	-140	-110	-120
	5	-10	-20	-40	-10	10
	6	-10	10	-30	0	20
	7	20	10	10	-10	
	8	0	0	-20	0	
	12	40	0	0	0	
	13	10	20	10	0	
	14	0	-10	0	10	
	15	20	10	10	50	