

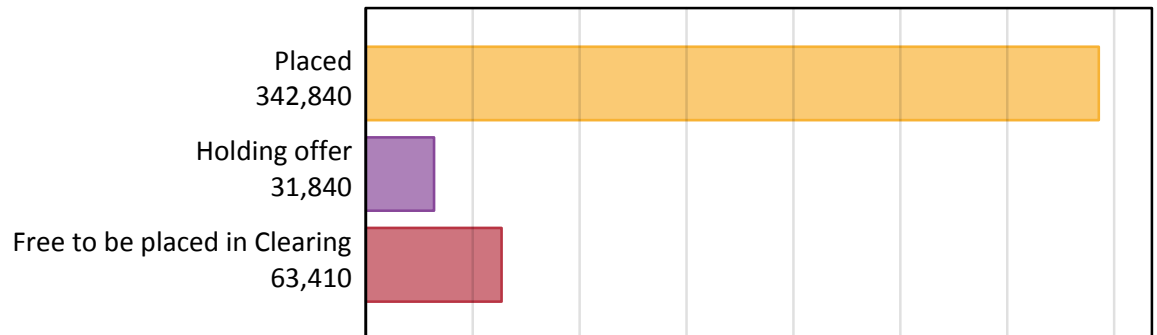
# Daily Clearing Analysis: Overview

Analysis at 00:05 on Tuesday 22 August 2017 (5 days after A level results day)

## A.1 Applicants by type and status from England, 2017 cycle

Applicant type	Status	2017
Main scheme	Placed (Clearing)	26,710
	Placed (Adjustment)	910
	Placed (Firm)	274,260
	Placed (Insurance)	26,140
	Placed (Other)	9,710
	Holding offer	31,840
	Free to be placed in Clearing	63,410
Direct to Clearing	Placed (Direct to Clearing)	5,110
	Other (Direct to Clearing)	6,380
All applicants	Placed	342,840

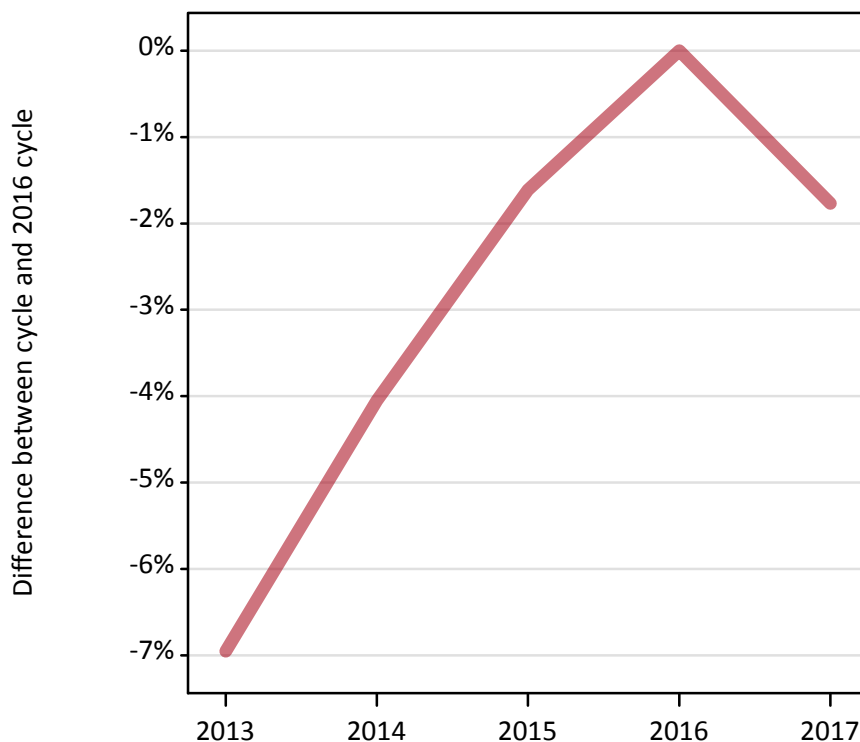
## A.2 Summary of applicants who are placed, holding offers or free to be placed in Clearing ( England )



### A.3 All placed applicants from England: 5 days after A level results day

All placed applicants: difference between cycle and 2016 cycle

Placed



### A.4 All placed applicants from England: 5 days after A level results day

All placed applicants: applicants at 5 days after A level results day

Applicant type	Status	2013	2014	2015	2016	2017
All applicants	Placed	324,750	334,870	343,390	349,010	342,840

### A.5 All placed applicants from England: 5 days after A level results day

All placed applicants: difference between cycle and 2016 cycle

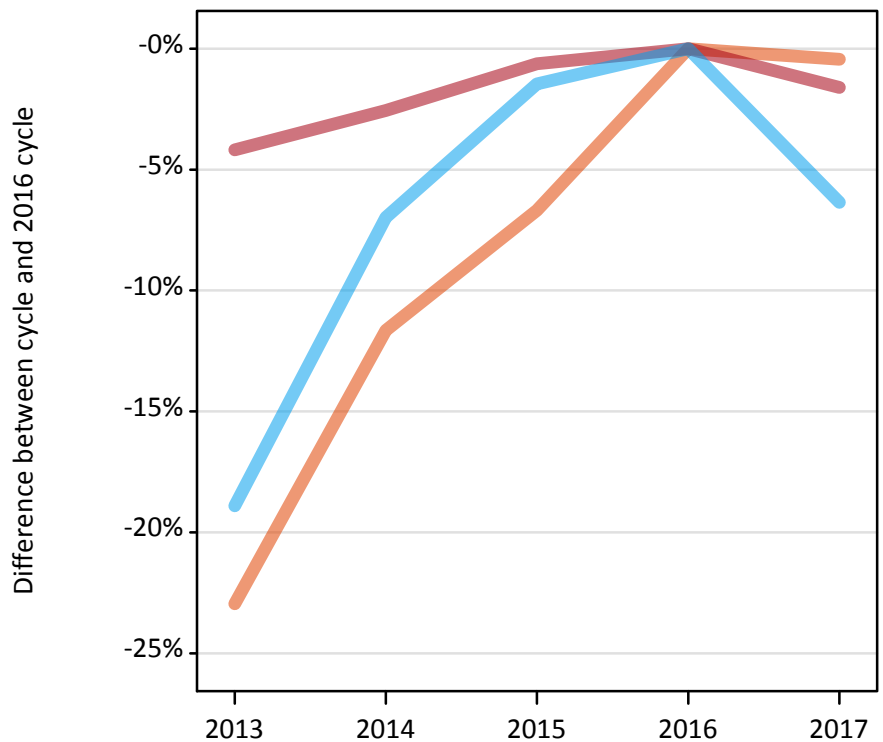
Applicant type	Status	2013	2014	2015	2016	2017
All applicants	Placed	-7%	-4%	-2%	0%	-2%

Note: Percentage changes are not plotted for lines with, on average, fewer than 30 applicants per year. As a result, lines for some, or all, of the states may be missing.

### A.6 Placed main scheme applicants from England: 5 days after A level results day

Selected placed routes: difference between cycle and 2016 cycle

- Placed (Clearing)
- Placed (Firm)
- Placed (Insurance)



### A.7 Placed main scheme applicants from England: 5 days after A level results day

All Main scheme placed routes (excluding Adjustment): applicants at 5 days after A level results day

Applicant type	Status	2013	2014	2015	2016	2017
Main scheme	Placed (Clearing)	20,670	23,700	25,040	26,830	26,710
	Placed (Firm)	267,050	271,580	276,980	278,720	274,260
	Placed (Insurance)	22,640	25,970	27,510	27,910	26,140
	Placed (Other)	9,130	8,920	8,710	9,760	9,710

### A.8 Placed main scheme applicants from England: 5 days after A level results day

Selected placed routes: difference between cycle and 2016 cycle

Applicant type	Status	2013	2014	2015	2016	2017
Main scheme	Placed (Clearing)	-23%	-12%	-7%	0%	-0%
	Placed (Firm)	-4%	-3%	-1%	0%	-2%
	Placed (Insurance)	-19%	-7%	-1%	0%	-6%

Note: Percentage changes are not plotted for lines with, on average, fewer than 30 applicants per year. As a result, lines for some, or all, of the states may be missing.

### A.9 Main scheme applicants placed through adjustment: 5 days after A level results day

Placed through adjustment: difference between cycle and 2016 cycle

Placed (Adjustment)



### A.10 Main scheme applicants placed through adjustment: 5 days after A level results day

Placed through adjustment: applicants at 5 days after A level results day

Applicant type	Status	2013	2014	2015	2016	2017
Main scheme	Placed (Adjustment)	1,030	950	970	740	910

### A.11 Main scheme applicants placed through adjustment: 5 days after A level results day

Placed through adjustment: difference between cycle and 2016 cycle

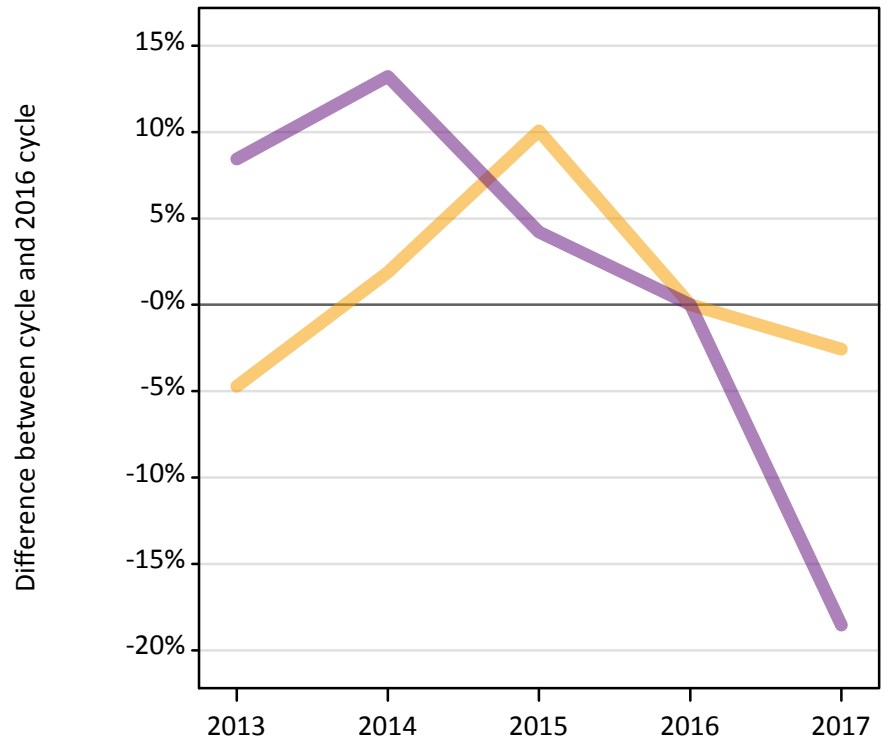
Applicant type	Status	2013	2014	2015	2016	2017
Main scheme	Placed (Adjustment)	39%	29%	31%	0%	23%

Note: Percentage changes are not plotted for lines with, on average, fewer than 30 applicants per year. As a result, lines for some, or all, of the states may be missing.

### A.12 Main scheme applicants not currently placed from England: 5 days after A level results day

Applicants in unplaced states: difference between cycle and 2016 cycle

— Holding offer  
— Free to be placed in Clearing



### A.13 Main scheme applicants not currently placed from England: 5 days after A level results day

Applicants in unplaced states: applicants at 5 days after A level results day

Applicant type	Status	2013	2014	2015	2016	2017
Main scheme	Holding offer	31,140	33,300	35,970	32,680	31,840
	Free to be placed in Clearing	84,410	88,130	81,120	77,840	63,410

### A.14 Main scheme applicants not currently placed from England: 5 days after A level results day

Applicants in unplaced states: difference between cycle and 2016 cycle

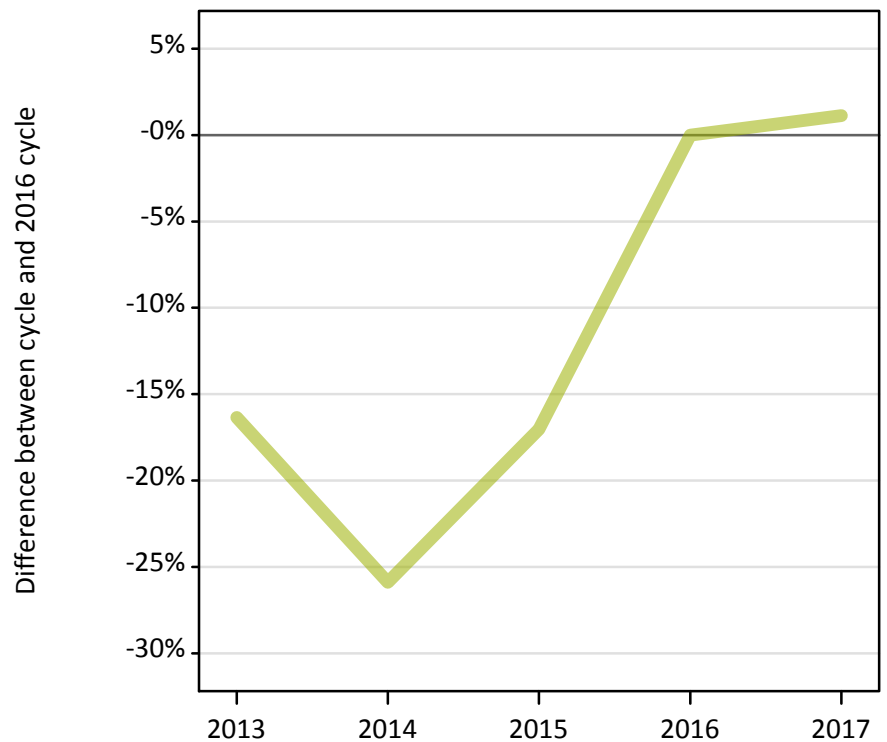
Applicant type	Status	2013	2014	2015	2016	2017
Main scheme	Holding offer	-5%	2%	10%	0%	-3%
	Free to be placed in Clearing	8%	13%	4%	0%	-19%

Note: Percentage changes are not plotted for lines with, on average, fewer than 30 applicants per year. As a result, lines for some, or all, of the states may be missing.

### A.15 Direct to Clearing applicants from England: 5 days after A level results day

Placed (Direct to Clearing): difference between cycle and 2016 cycle

Placed (Direct to Clearing)



### A.16 Direct to Clearing applicants from England: 5 days after A level results day

Direct to Clearing 5 days after A level results day

Applicant type	Status	2013	2014	2015	2016	2017
Direct to Clearing	Placed (Direct to Clearing)	4,230	3,740	4,190	5,050	5,110
	Other (Direct to Clearing)	6,910	5,980	6,530	6,370	6,380

### A.17 Direct to Clearing applicants from England: 5 days after A level results day

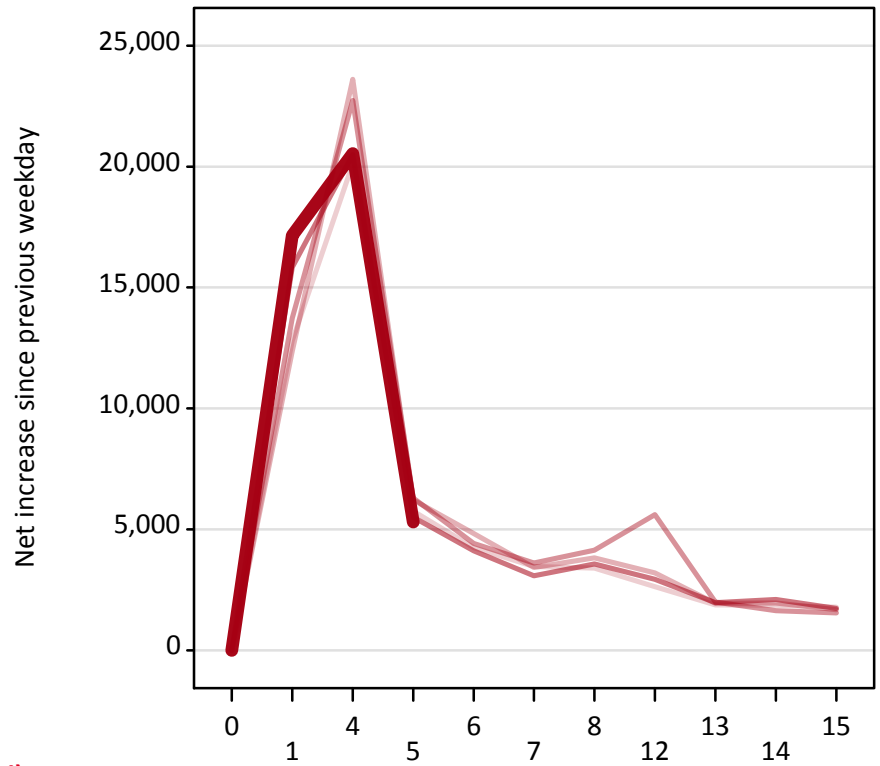
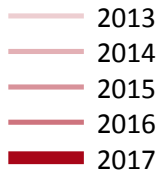
Placed (Direct to Clearing): difference between cycle and 2016 cycle

Applicant type	Status	2013	2014	2015	2016	2017
Direct to Clearing	Placed (Direct to Clearing)	-16%	-26%	-17%	0%	1%

Note: Percentage changes are not plotted for lines with, on average, fewer than 30 applicants per year. As a result, lines for some, or all, of the states may be missing.

### A.18 All Placed: Daily net change (from England)

Net increase since previous weekday (2017 cycle up to 5 days after A level results day)



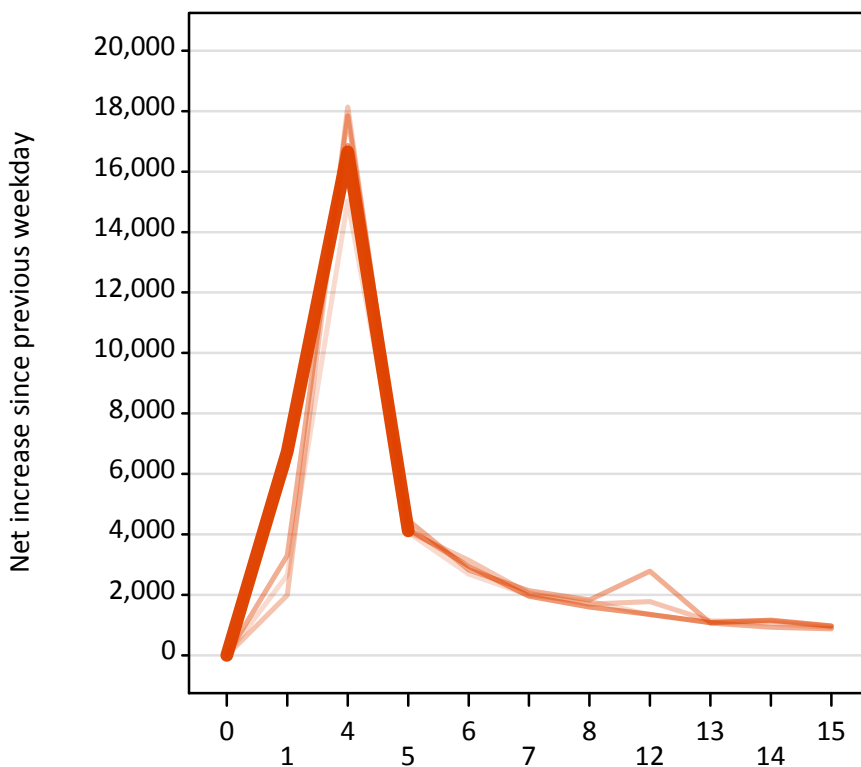
### A.19 All Placed: Daily net change (from England)

Net increase since previous weekday (2017 cycle up to 5 days after A level results day)

Applicant status, days since A level results day		2013	2014	2015	2016	2017
All Placed	0	0	0	0	0	0
	1	12,810	12,380	13,730	15,840	17,150
	4	20,120	23,620	22,730	20,500	20,540
	5	5,750	6,220	6,300	5,500	5,300
	6	4,240	4,830	4,410	4,120	
	7	3,470	3,420	3,600	3,080	
	8	3,400	3,830	4,140	3,570	
	12	2,630	3,200	5,610	2,940	
	13	1,880	1,940	2,000	1,970	
	14	1,860	1,960	1,640	2,100	
	15	1,780	1,680	1,540	1,730	

### A.20 Placed through Clearing only: Daily net change (from England)

Net increase since previous weekday (2017 cycle up to 5 days after A level results day)



### A.21 Placed through Clearing only: Daily net change (from England)

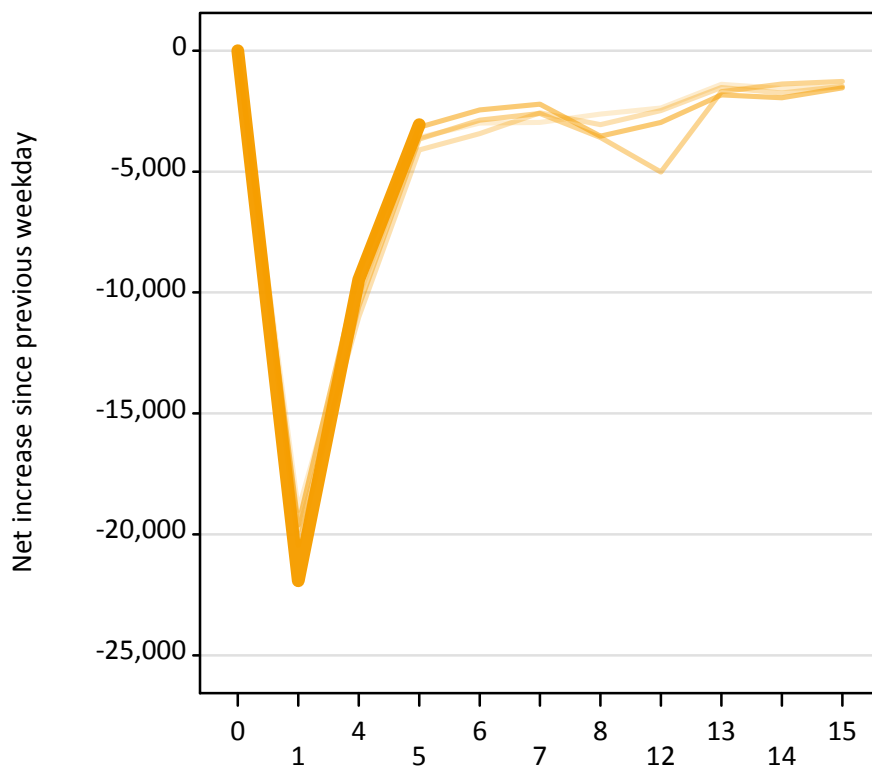
Net increase since previous weekday (2017 cycle up to 5 days after A level results day)

Applicant status, days since A level results day		2013	2014	2015	2016	2017
Placed through Clearing only	0	0	0	0	0	0
	1	2,650	1,990	3,300	6,260	6,740
	4	15,030	18,140	17,850	16,870	16,660
	5	4,070	4,080	4,470	4,190	4,120
	6	2,690	3,140	2,830	2,940	
	7	1,980	2,060	2,140	1,950	
	8	1,780	1,690	1,830	1,590	
	12	1,340	1,780	2,790	1,360	
	13	1,090	1,130	1,060	1,080	
	14	1,050	1,130	930	1,160	
	15	910	960	880	970	



### A.22 Holding Offer: Daily net change (from England)

Net increase since previous weekday (2017 cycle up to 5 days after A level results day)



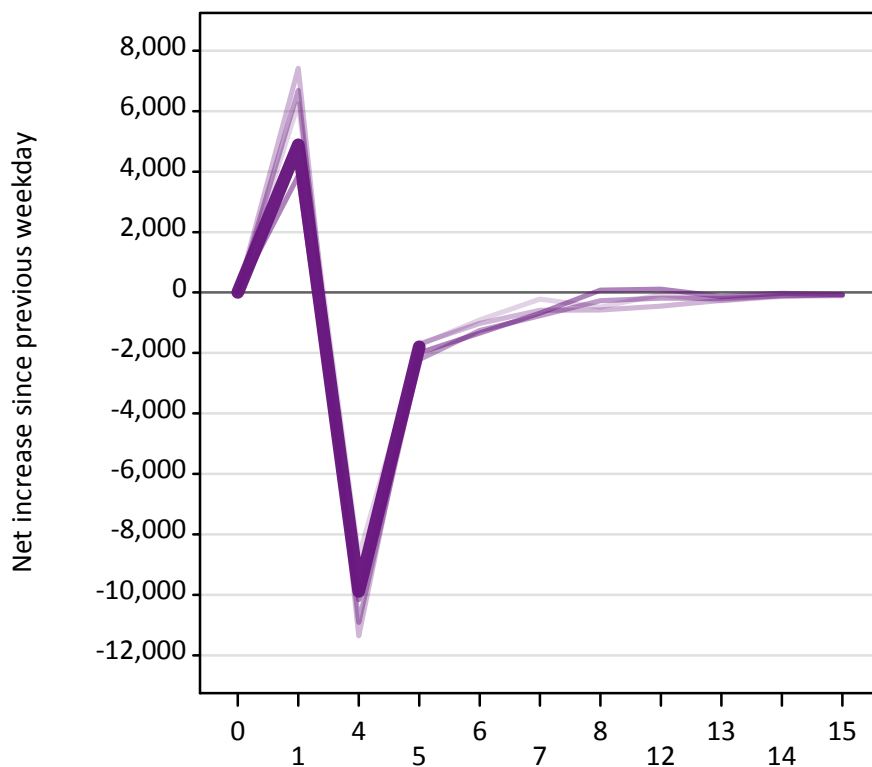
### A.23 Holding Offer: Daily net change (from England)

Net increase since previous weekday (2017 cycle up to 5 days after A level results day)

Applicant status, days since A level results day		2013	2014	2015	2016	2017
Holding Offer	0	0	0	0	0	0
	1	-19,020	-19,850	-20,460	-19,620	-21,920
	4	-10,150	-11,010	-10,580	-9,160	-9,470
	5	-3,590	-4,110	-3,660	-3,160	-3,060
	6	-3,000	-3,430	-2,870	-2,450	
	7	-2,970	-2,570	-2,590	-2,210	
	8	-2,620	-3,070	-3,590	-3,540	
	12	-2,360	-2,470	-5,010	-2,970	
	13	-1,390	-1,530	-1,690	-1,830	
	14	-1,570	-1,760	-1,370	-1,950	
	15	-1,500	-1,470	-1,280	-1,530	

### A.24 Free to be placed in Clearing: Daily net change (from England)

Net increase since previous weekday (2017 cycle up to 5 days after A level results day)



### A.25 Free to be placed in Clearing: Daily net change (from England)

Net increase since previous weekday (2017 cycle up to 5 days after A level results day)

Applicant status, days since A level results day		2013	2014	2015	2016	2017
Free to be placed in Clearing	0	0	0	0	0	0
	1	6,240	7,420	6,690	3,860	4,890
	4	-8,730	-11,360	-10,920	-10,160	-9,880
	5	-1,750	-1,700	-2,220	-2,000	-1,800
	6	-910	-1,020	-1,260	-1,340	
	7	-220	-590	-770	-680	
	8	-480	-580	-270	80	
	12	-70	-450	-190	110	
	13	-270	-260	-200	-130	
	14	-130	-100	-120	-20	
	15	-100	-100	-70	-70	