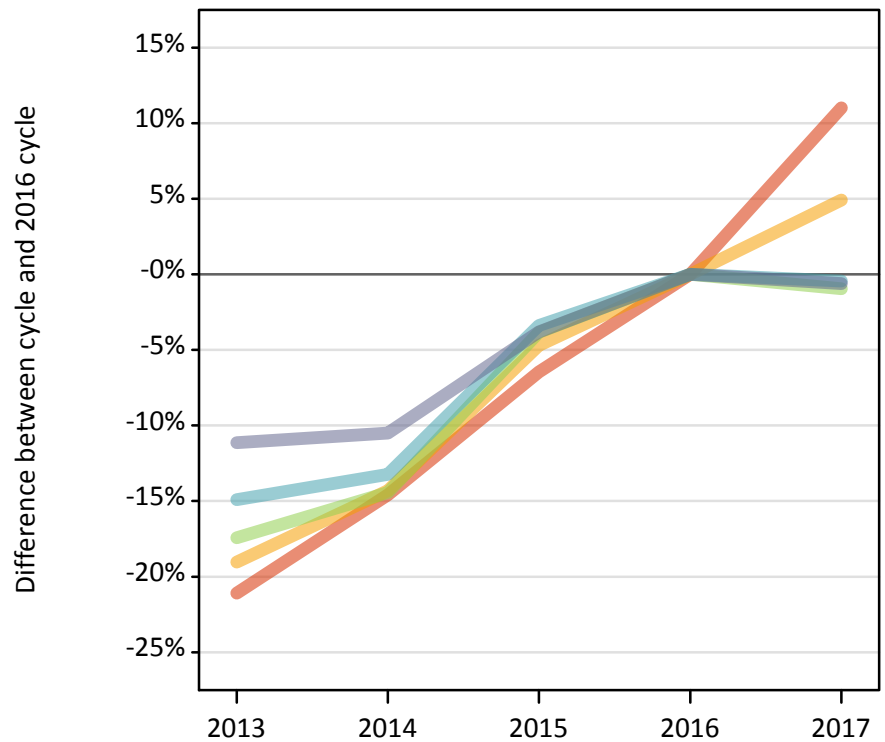


## Analysis at 00:05 on Tuesday 22 August 2017 (5 days after A level results day)

### J.1 Placed applicants from Scotland by SIMD16 quintile: 5 days after A level results day

Placed applicants: change relative to 2016 cycle totals

- Quintile 1
- Quintile 2
- Quintile 3
- Quintile 4
- Quintile 5



### J.2 Placed applicants from Scotland by SIMD16 quintile: 5 days after A level results day

Applicant Status	SIMD16	2013	2014	2015	2016	2017
Placed	Quintile 1	3,400	3,680	4,030	4,310	4,790
	Quintile 2	4,050	4,280	4,760	5,000	5,250
	Quintile 3	5,060	5,240	5,890	6,130	6,070
	Quintile 4	6,420	6,550	7,290	7,550	7,510
	Quintile 5	8,610	8,670	9,320	9,690	9,630

### J.3 Placed applicants from Scotland by SIMD16 quintile: 5 days after A level results day

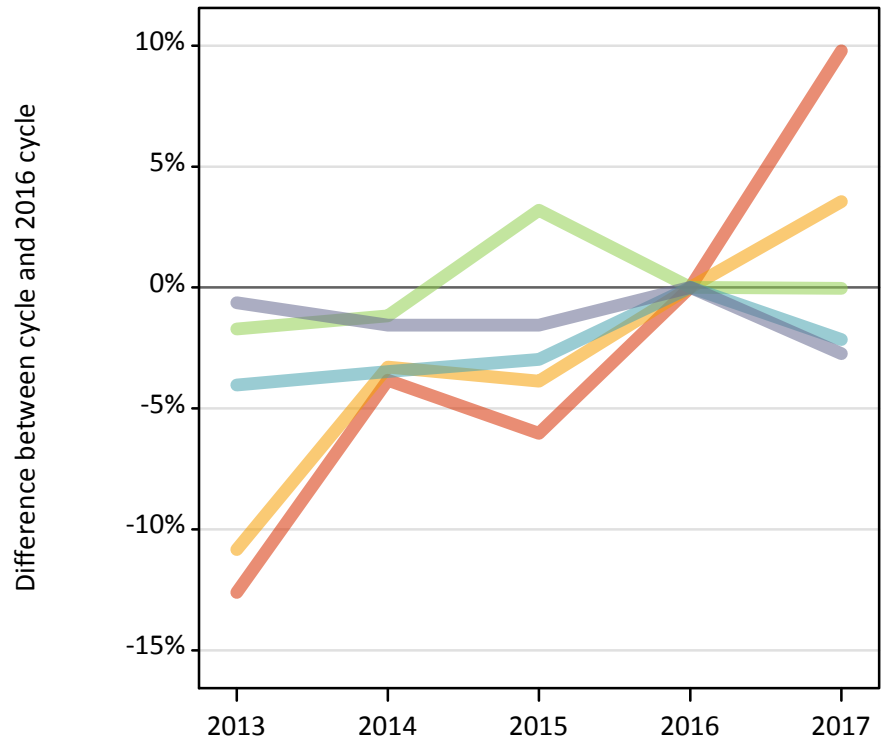
Placed applicants: change relative to 2016 cycle totals

Applicant Status	SIMD16	2013	2014	2015	2016	2017
Placed	Quintile 1	-21%	-15%	-6%	0%	11%
	Quintile 2	-19%	-14%	-5%	0%	5%
	Quintile 3	-17%	-14%	-4%	0%	-1%
	Quintile 4	-15%	-13%	-3%	0%	-0%
	Quintile 5	-11%	-10%	-4%	0%	-1%

#### J.4 Placed 18 year old applicants from Scotland by SIMD16 quintile: 5 days after A level results day

Placed 18 year old applicants: change relative to 2016 cycle totals

- Quintile 1
- Quintile 2
- Quintile 3
- Quintile 4
- Quintile 5



#### J.5 Placed 18 year old applicants from Scotland by SIMD16 quintile: 5 days after A level results day

Applicant Status	SIMD16	2013	2014	2015	2016	2017
Placed	Quintile 1	1,120	1,230	1,200	1,280	1,400
	Quintile 2	1,680	1,820	1,810	1,880	1,950
	Quintile 3	2,520	2,540	2,650	2,570	2,560
	Quintile 4	3,480	3,500	3,520	3,630	3,550
	Quintile 5	5,190	5,140	5,140	5,220	5,080

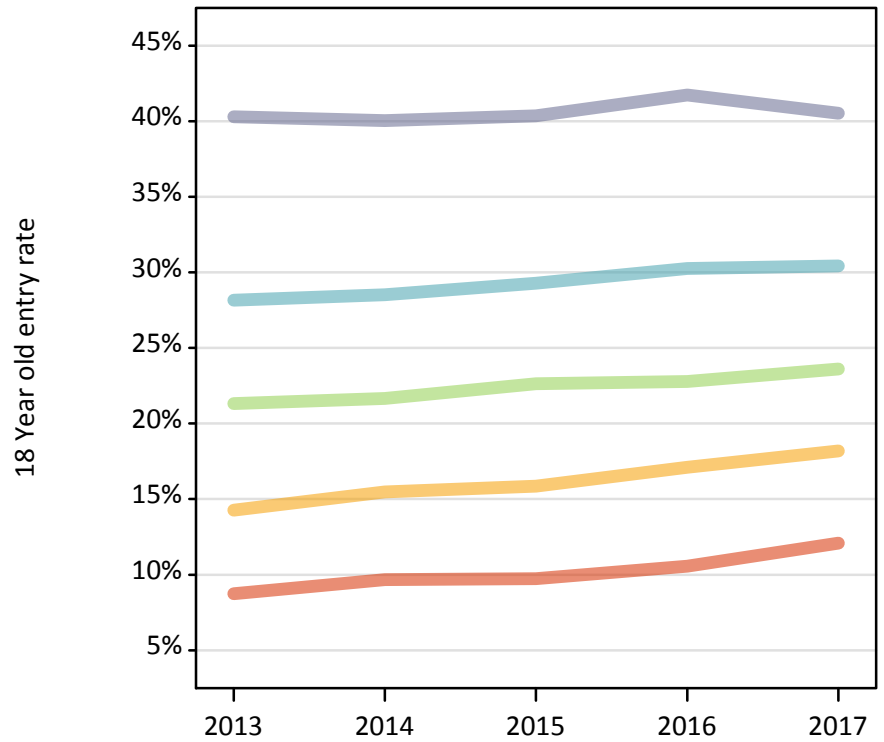
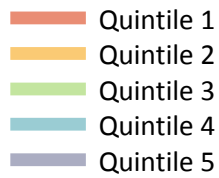
#### J.6 Placed 18 year old applicants from Scotland by SIMD16 quintile: 5 days after A level results day

Placed 18 year old applicants: change relative to 2016 cycle totals

Applicant Status	SIMD16	2013	2014	2015	2016	2017
Placed	Quintile 1	-13%	-4%	-6%	0%	10%
	Quintile 2	-11%	-3%	-4%	0%	4%
	Quintile 3	-2%	-1%	3%	0%	-0%
	Quintile 4	-4%	-3%	-3%	0%	-2%
	Quintile 5	-1%	-2%	-2%	0%	-3%

### J.7 Placed 18 year old applicants from Scotland by SIMD16 quintile: 5 days after A level results day

Placed 18 year old applicants: entry rate



### J.8 Placed 18 year old applicants from Scotland by SIMD16 quintile: 5 days after A level results day

Placed 18 year old applicants: entry rate

Applicant Status	SIMD16	2013	2014	2015	2016	2017
Placed	Quintile 1	8.7%	9.7%	9.7%	10.6%	12.1%
	Quintile 2	14.3%	15.5%	15.9%	17.1%	18.2%
	Quintile 3	21.3%	21.7%	22.6%	22.8%	23.6%
	Quintile 4	28.2%	28.5%	29.3%	30.3%	30.4%
	Quintile 5	40.3%	40.0%	40.4%	41.7%	40.5%

### J.9 Placed 18 year old applicants from Scotland by SIMD16 quintile: 5 days after A level results day

Placed 18 year old applicants: entry rate (indexed to 100 = Quintile 1)

Applicant Status	SIMD16	2013	2014	2015	2016	2017
Placed	Quintile 1	100	100	100	100	100
	Quintile 2	163	160	163	162	150
	Quintile 3	244	224	232	215	195
	Quintile 4	322	295	300	286	252
	Quintile 5	461	414	414	395	335