

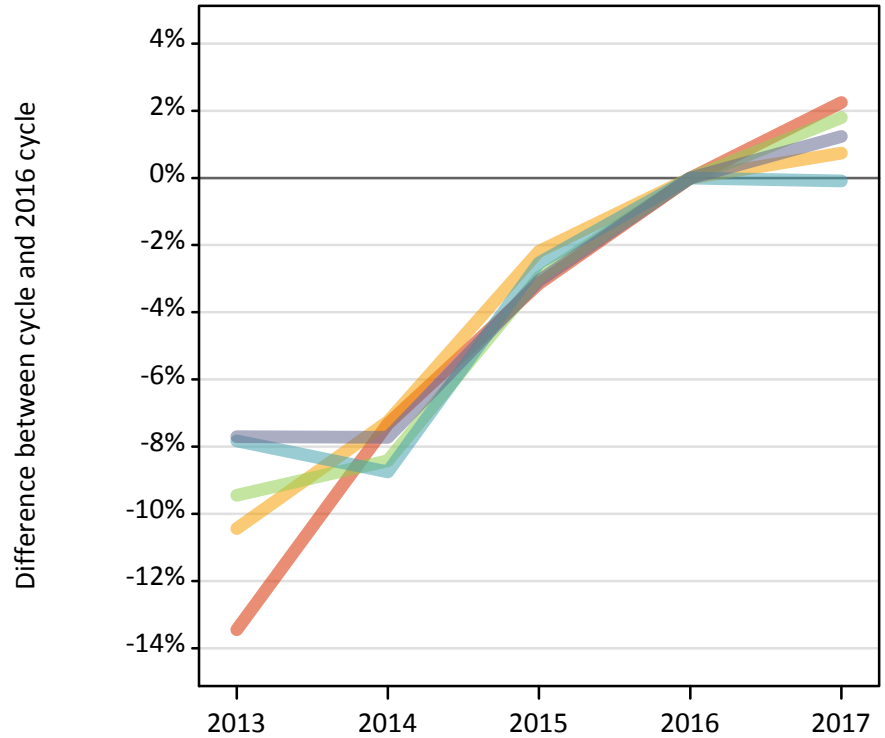
# Daily Clearing Analysis: POLAR3

Analysis at 00:05 on Friday 18 August 2017 (1 day after A level results day)

P.1 Placed 18 year old applicants from England by POLAR3 quintile: 1 day after A level results day

Placed 18 year old applicants: change relative to 2016 cycle totals

- Quintile 1
- Quintile 2
- Quintile 3
- Quintile 4
- Quintile 5



P.2 Placed 18 year old applicants from England by POLAR3 quintile: 1 day after A level results day

Applicant Status	POLAR3	2013	2014	2015	2016	2017
Placed	Quintile 1	17,360	18,580	19,420	20,050	20,500
	Quintile 2	25,210	26,110	27,530	28,150	28,360
	Quintile 3	32,220	32,590	34,530	35,590	36,230
	Quintile 4	38,710	38,330	40,940	42,000	41,960
	Quintile 5	51,270	51,260	53,850	55,550	56,240

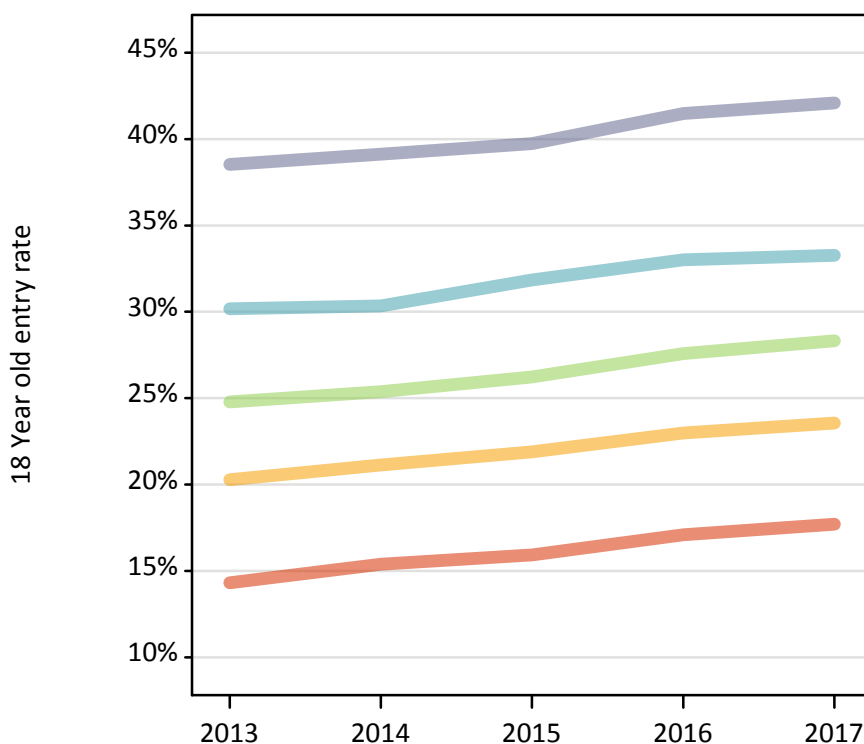
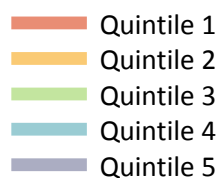
P.3 Placed 18 year old applicants from England by POLAR3 quintile: 1 day after A level results day

Placed 18 year old applicants: change relative to 2016 cycle totals

Applicant Status	POLAR3	2013	2014	2015	2016	2017
Placed	Quintile 1	-13%	-7%	-3%	0%	2%
	Quintile 2	-10%	-7%	-2%	0%	1%
	Quintile 3	-9%	-8%	-3%	0%	2%
	Quintile 4	-8%	-9%	-3%	0%	-0%
	Quintile 5	-8%	-8%	-3%	0%	1%

**P.4 Placed 18 year old applicants from England by POLAR3 quintile: 1 day after A level results day**

Placed 18 year old applicants: entry rate



**P.5 Placed 18 year old applicants from England by POLAR3 quintile: 1 day after A level results day**

Placed 18 year old applicants: entry rate

Applicant Status	POLAR3	2013	2014	2015	2016	2017
Placed	Quintile 1	14.3%	15.4%	15.9%	17.1%	17.7%
	Quintile 2	20.3%	21.1%	21.9%	23.0%	23.6%
	Quintile 3	24.8%	25.4%	26.2%	27.6%	28.3%
	Quintile 4	30.2%	30.3%	31.8%	33.0%	33.3%
	Quintile 5	38.5%	39.1%	39.7%	41.5%	42.1%

**P.6 Placed 18 year old applicants from England by POLAR3 quintile: 1 day after A level results day**

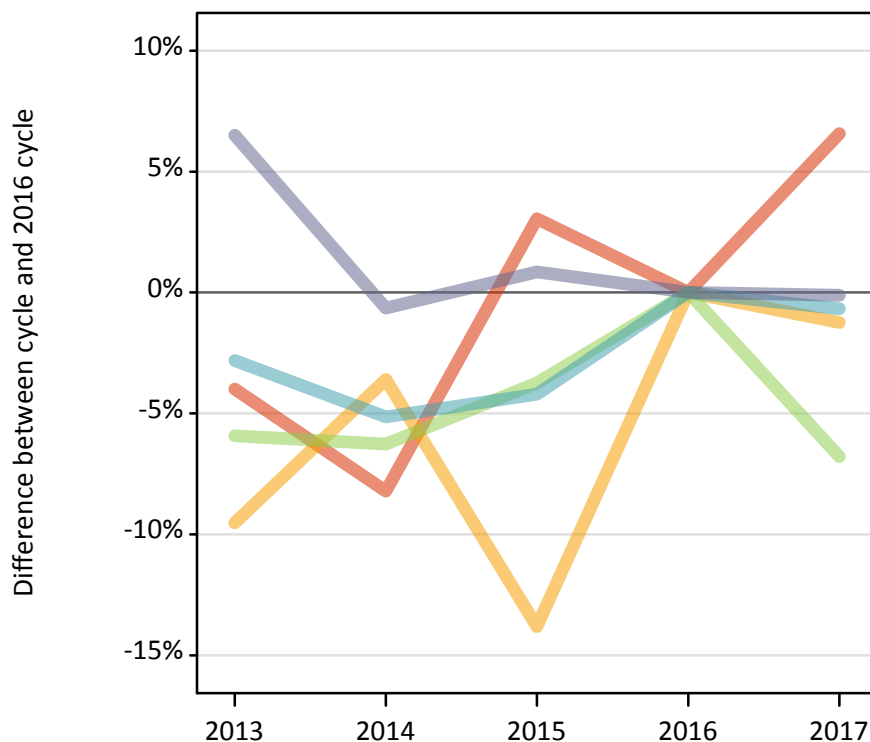
Placed 18 year old applicants: entry rate (indexed to 100 = Quintile 1)

Applicant Status	POLAR3	2013	2014	2015	2016	2017
Placed	Quintile 1	100	100	100	100	100
	Quintile 2	142	137	137	135	133
	Quintile 3	173	165	165	161	160
	Quintile 4	211	197	200	193	188
	Quintile 5	269	254	249	243	238

**P.7 Placed 18 year old applicants from Northern Ireland by POLAR3 quintile: 1 day after A level results day**

Placed 18 year old applicants: change relative to 2016 cycle totals

- Quintile 1
- Quintile 2
- Quintile 3
- Quintile 4
- Quintile 5



**P.8 Placed 18 year old applicants from Northern Ireland by POLAR3 quintile: 1 day after A level results day**

Applicant Status	POLAR3	2013	2014	2015	2016	2017
Placed	Quintile 1	410	390	440	430	450
	Quintile 2	660	700	620	720	720
	Quintile 3	1,080	1,080	1,110	1,150	1,070
	Quintile 4	2,180	2,120	2,140	2,240	2,220
	Quintile 5	2,980	2,780	2,820	2,800	2,800

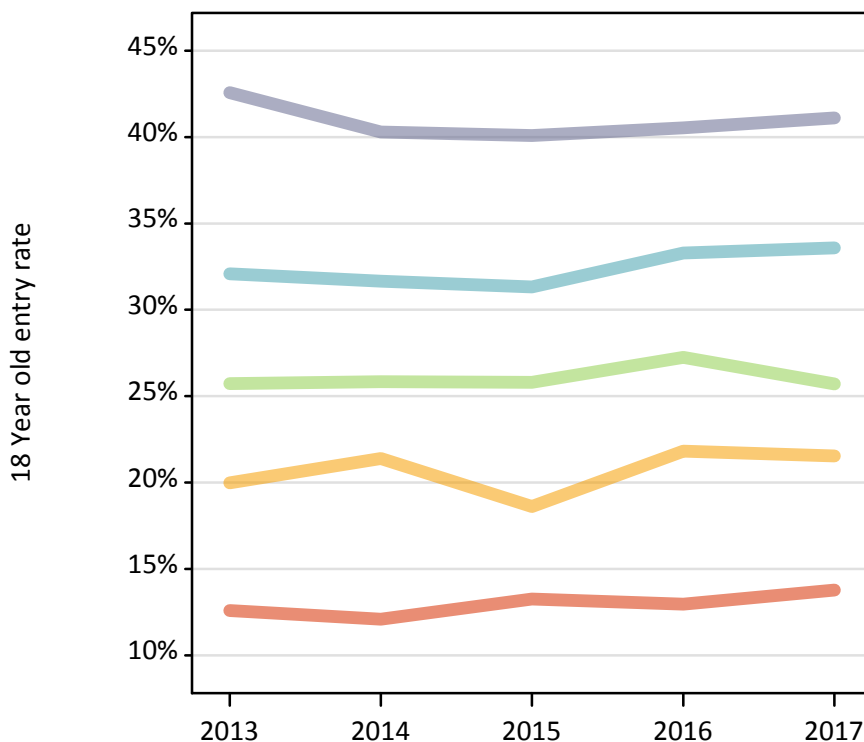
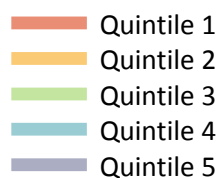
**P.9 Placed 18 year old applicants from Northern Ireland by POLAR3 quintile: 1 day after A level results day**

Placed 18 year old applicants: change relative to 2016 cycle totals

Applicant Status	POLAR3	2013	2014	2015	2016	2017
Placed	Quintile 1	-4%	-8%	3%	0%	7%
	Quintile 2	-10%	-4%	-14%	0%	-1%
	Quintile 3	-6%	-6%	-4%	0%	-7%
	Quintile 4	-3%	-5%	-4%	0%	-1%
	Quintile 5	7%	-1%	1%	0%	-0%

**P.10 Placed 18 year old applicants from Northern Ireland by POLAR3 quintile: 1 day after A level results day**

Placed 18 year old applicants: entry rate



**P.11 Placed 18 year old applicants from Northern Ireland by POLAR3 quintile: 1 day after A level results day**

Placed 18 year old applicants: entry rate

Applicant Status	POLAR3	2013	2014	2015	2016	2017
Placed	Quintile 1	12.6%	12.1%	13.2%	13.0%	13.8%
	Quintile 2	20.0%	21.4%	18.6%	21.8%	21.5%
	Quintile 3	25.7%	25.8%	25.8%	27.2%	25.7%
	Quintile 4	32.1%	31.7%	31.3%	33.3%	33.6%
	Quintile 5	42.6%	40.3%	40.1%	40.5%	41.1%

**P.12 Placed 18 year old applicants from Northern Ireland by POLAR3 quintile: 1 day after A level results day**

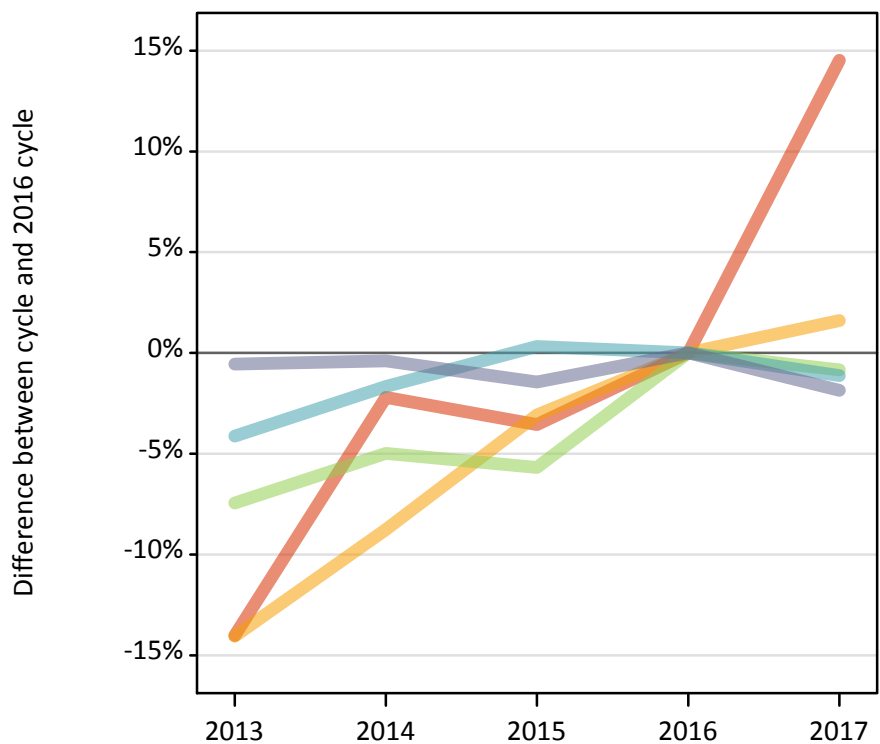
Placed 18 year old applicants: entry rate (indexed to 100 = Quintile 1)

Applicant Status	POLAR3	2013	2014	2015	2016	2017
Placed	Quintile 1	100	100	100	100	100
	Quintile 2	159	177	141	168	156
	Quintile 3	204	214	195	210	187
	Quintile 4	255	262	236	257	244
	Quintile 5	338	333	303	313	299

**P.13 Placed 18 year old applicants from Scotland by POLAR3 quintile: 1 day after A level results day**

Placed 18 year old applicants: change relative to 2016 cycle totals

- Quintile 1
- Quintile 2
- Quintile 3
- Quintile 4
- Quintile 5



**P.14 Placed 18 year old applicants from Scotland by POLAR3 quintile: 1 day after A level results day**

Applicant Status	POLAR3	2013	2014	2015	2016	2017
Placed	Quintile 1	510	580	570	590	680
	Quintile 2	1,290	1,360	1,450	1,500	1,520
	Quintile 3	2,100	2,160	2,140	2,270	2,250
	Quintile 4	3,240	3,320	3,390	3,380	3,340
	Quintile 5	6,650	6,670	6,600	6,690	6,570

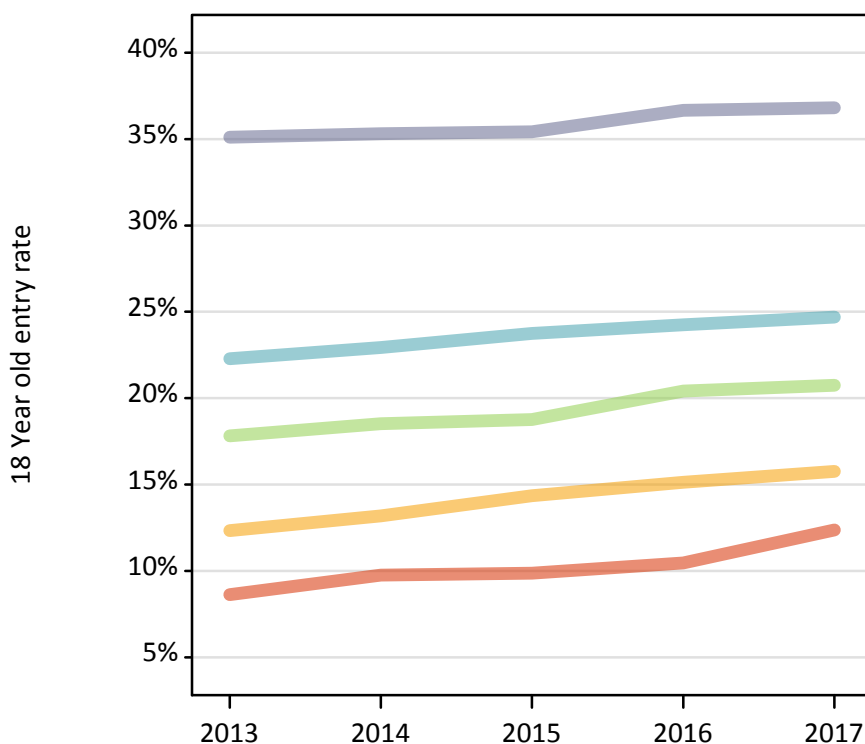
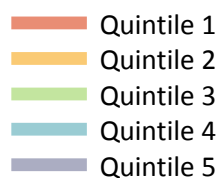
**P.15 Placed 18 year old applicants from Scotland by POLAR3 quintile: 1 day after A level results day**

Placed 18 year old applicants: change relative to 2016 cycle totals

Applicant Status	POLAR3	2013	2014	2015	2016	2017
Placed	Quintile 1	-14%	-2%	-4%	0%	15%
	Quintile 2	-14%	-9%	-3%	0%	2%
	Quintile 3	-7%	-5%	-6%	0%	-1%
	Quintile 4	-4%	-2%	0%	0%	-1%
	Quintile 5	-1%	-0%	-1%	0%	-2%

**P.16 Placed 18 year old applicants from Scotland by POLAR3 quintile: 1 day after A level results day**

Placed 18 year old applicants: entry rate



**P.17 Placed 18 year old applicants from Scotland by POLAR3 quintile: 1 day after A level results day**

Placed 18 year old applicants: entry rate

Applicant Status	POLAR3	2013	2014	2015	2016	2017
Placed	Quintile 1	8.6%	9.8%	9.9%	10.5%	12.4%
	Quintile 2	12.3%	13.2%	14.4%	15.1%	15.8%
	Quintile 3	17.8%	18.5%	18.8%	20.4%	20.7%
	Quintile 4	22.3%	22.9%	23.8%	24.3%	24.7%
	Quintile 5	35.1%	35.3%	35.4%	36.7%	36.8%

**P.18 Placed 18 year old applicants from Scotland by POLAR3 quintile: 1 day after A level results day**

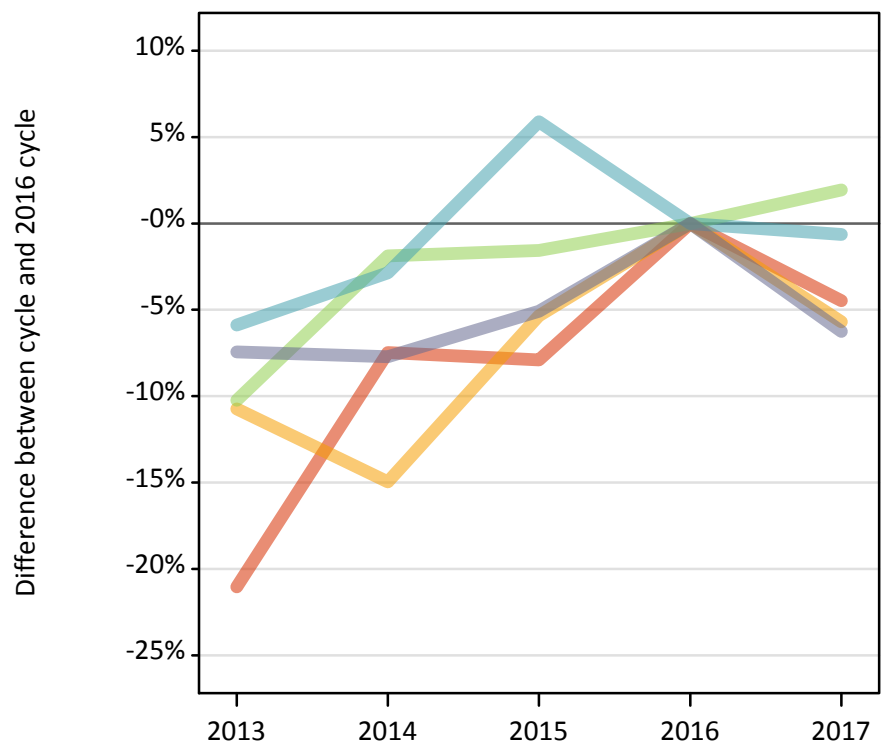
Placed 18 year old applicants: entry rate (indexed to 100 = Quintile 1)

Applicant Status	POLAR3	2013	2014	2015	2016	2017
Placed	Quintile 1	100	100	100	100	100
	Quintile 2	143	135	145	145	127
	Quintile 3	207	190	190	195	168
	Quintile 4	258	235	241	232	200
	Quintile 5	407	362	359	351	298

**P.19 Placed 18 year old applicants from Wales by POLAR3 quintile: 1 day after A level results day**

Placed 18 year old applicants: change relative to 2016 cycle totals

- Quintile 1
- Quintile 2
- Quintile 3
- Quintile 4
- Quintile 5



**P.20 Placed 18 year old applicants from Wales by POLAR3 quintile: 1 day after A level results day**

Applicant Status	POLAR3	2013	2014	2015	2016	2017
Placed	Quintile 1	1,130	1,320	1,320	1,430	1,370
	Quintile 2	1,820	1,730	1,930	2,040	1,920
	Quintile 3	1,440	1,570	1,580	1,600	1,630
	Quintile 4	1,930	2,000	2,180	2,060	2,040
	Quintile 5	2,400	2,390	2,460	2,590	2,430

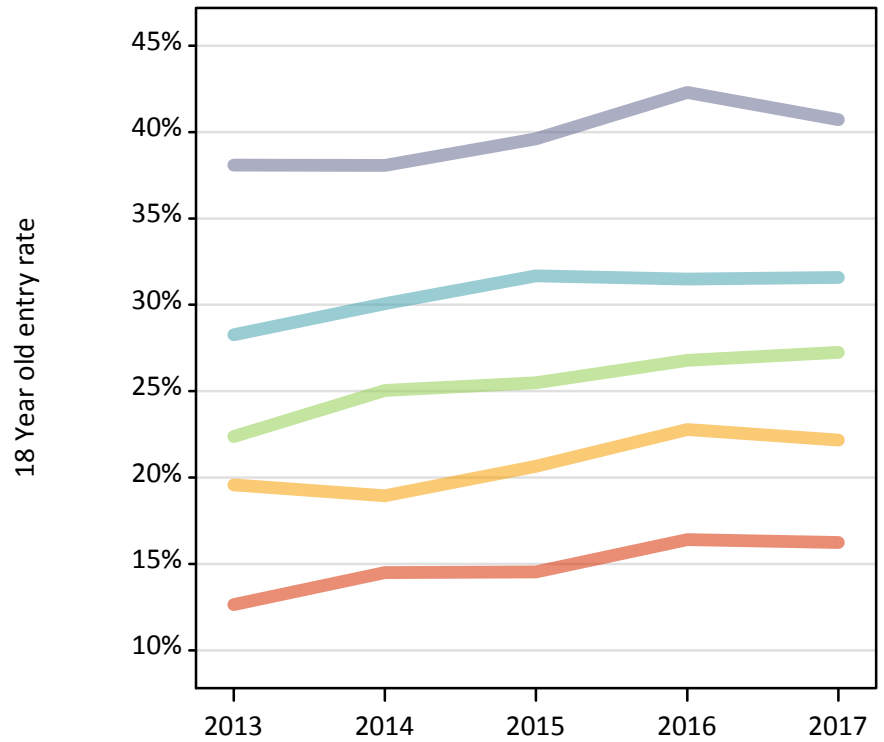
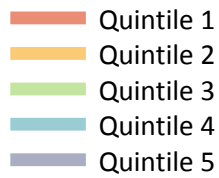
**P.21 Placed 18 year old applicants from Wales by POLAR3 quintile: 1 day after A level results day**

Placed 18 year old applicants: change relative to 2016 cycle totals

Applicant Status	POLAR3	2013	2014	2015	2016	2017
Placed	Quintile 1	-21%	-7%	-8%	0%	-4%
	Quintile 2	-11%	-15%	-5%	0%	-6%
	Quintile 3	-10%	-2%	-2%	0%	2%
	Quintile 4	-6%	-3%	6%	0%	-1%
	Quintile 5	-7%	-8%	-5%	0%	-6%

**P.22 Placed 18 year old applicants from Wales by POLAR3 quintile: 1 day after A level results day**

Placed 18 year old applicants: entry rate



**P.23 Placed 18 year old applicants from Wales by POLAR3 quintile: 1 day after A level results day**

Placed 18 year old applicants: entry rate

Applicant Status	POLAR3	2013	2014	2015	2016	2017
Placed	Quintile 1	12.7%	14.5%	14.5%	16.4%	16.2%
	Quintile 2	19.6%	19.0%	20.7%	22.8%	22.2%
	Quintile 3	22.4%	25.0%	25.5%	26.8%	27.3%
	Quintile 4	28.3%	30.1%	31.7%	31.5%	31.6%
	Quintile 5	38.1%	38.1%	39.6%	42.3%	40.7%

**P.24 Placed 18 year old applicants from Wales by POLAR3 quintile: 1 day after A level results day**

Placed 18 year old applicants: entry rate (indexed to 100 = Quintile 1)

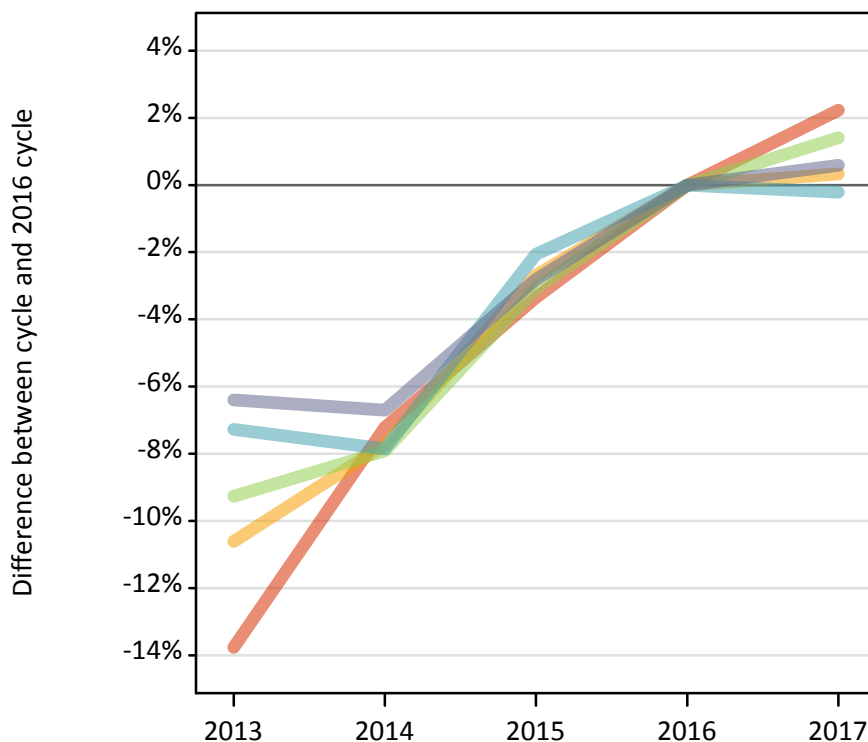
Applicant Status	POLAR3	2013	2014	2015	2016	2017
Placed	Quintile 1	100	100	100	100	100
	Quintile 2	155	131	142	139	137
	Quintile 3	177	173	175	163	168
	Quintile 4	223	207	218	192	195
	Quintile 5	301	263	272	258	251



**P.25 Placed 18 year old applicants from the UK by POLAR3 quintile: 1 day after A level results day**

Placed 18 year old applicants: change relative to 2016 cycle totals

- Quintile 1
- Quintile 2
- Quintile 3
- Quintile 4
- Quintile 5



**P.26 Placed 18 year old applicants from the UK by POLAR3 quintile: 1 day after A level results day**

Applicant Status	POLAR3	2013	2014	2015	2016	2017
Placed	Quintile 1	19,400	20,880	21,750	22,500	23,000
	Quintile 2	28,970	29,900	31,530	32,410	32,510
	Quintile 3	36,850	37,400	39,360	40,610	41,180
	Quintile 4	46,060	45,760	48,640	49,670	49,560
	Quintile 5	63,310	63,100	65,730	67,630	68,030

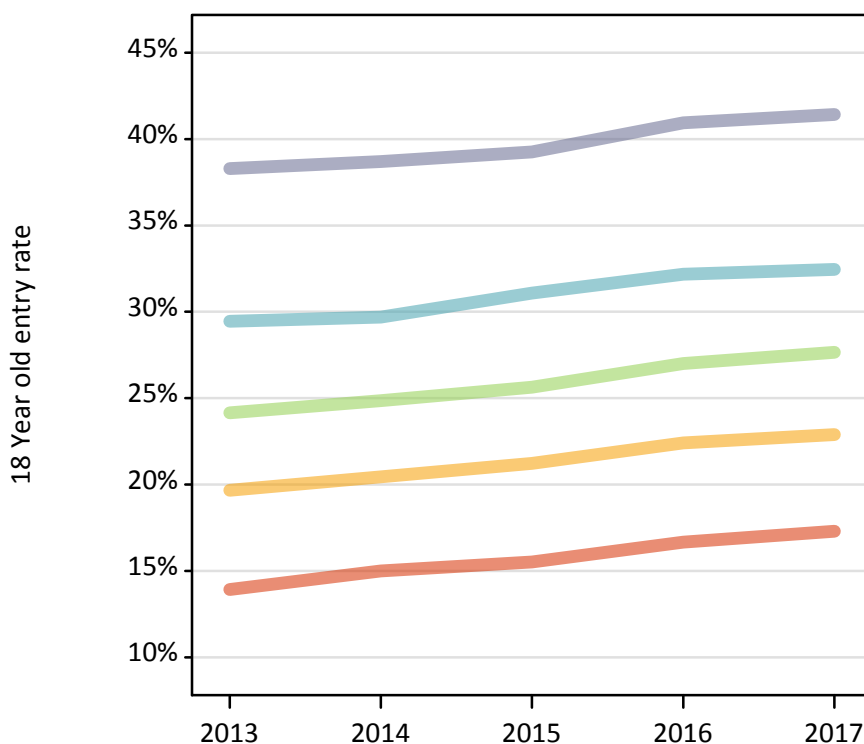
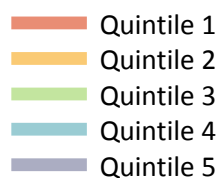
**P.27 Placed 18 year old applicants from the UK by POLAR3 quintile: 1 day after A level results day**

Placed 18 year old applicants: change relative to 2016 cycle totals

Applicant Status	POLAR3	2013	2014	2015	2016	2017
Placed	Quintile 1	-14%	-7%	-3%	0%	2%
	Quintile 2	-11%	-8%	-3%	0%	0%
	Quintile 3	-9%	-8%	-3%	0%	1%
	Quintile 4	-7%	-8%	-2%	0%	-0%
	Quintile 5	-6%	-7%	-3%	0%	1%

**P.28 Placed 18 year old applicants from the UK by POLAR3 quintile: 1 day after A level results day**

Placed 18 year old applicants: entry rate



**P.29 Placed 18 year old applicants from the UK by POLAR3 quintile: 1 day after A level results day**

Placed 18 year old applicants: entry rate

Applicant Status	POLAR3	2013	2014	2015	2016	2017
Placed	Quintile 1	13.9%	15.0%	15.5%	16.7%	17.3%
	Quintile 2	19.7%	20.4%	21.2%	22.4%	22.9%
	Quintile 3	24.2%	24.8%	25.6%	27.0%	27.7%
	Quintile 4	29.4%	29.7%	31.1%	32.2%	32.5%
	Quintile 5	38.3%	38.7%	39.3%	40.9%	41.4%

**P.30 Placed 18 year old applicants from the UK by POLAR3 quintile: 1 day after A level results day**

Placed 18 year old applicants: entry rate (indexed to 100 = Quintile 1)

Applicant Status	POLAR3	2013	2014	2015	2016	2017
Placed	Quintile 1	100	100	100	100	100
	Quintile 2	141	136	137	134	132
	Quintile 3	174	166	165	162	160
	Quintile 4	212	198	200	193	188
	Quintile 5	275	258	253	246	240