

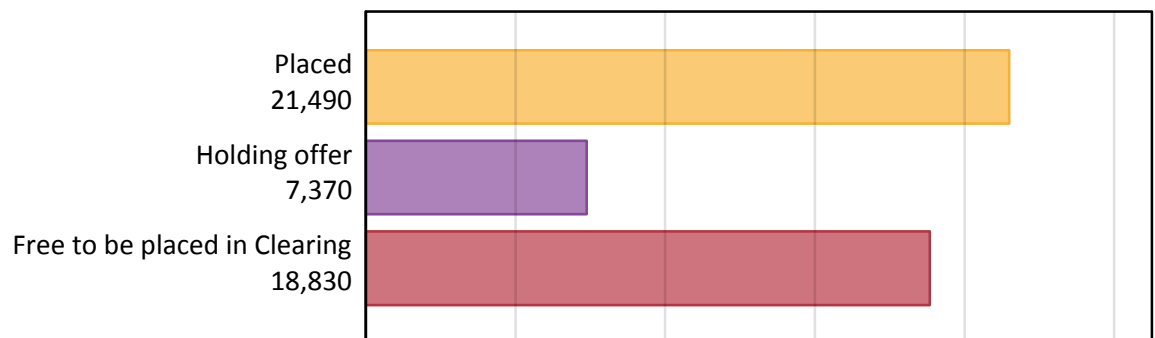
# Daily Clearing Analysis: Overview

## B7 Nursing analysis at 00:05 on Thursday 17 August 2017 (A level results day)

### AB.1 Placed applicants to nursing from all domiciles, 2017 cycle

Applicant type	Status	2017
Main scheme	Placed (Clearing)	240
	Placed (Adjustment)	0
	Placed (Firm)	19,970
	Placed (Insurance)	310
	Placed (Other)	890
	Holding offer	7,370
	Free to be placed in Clearing	18,830
Direct to Clearing	Placed (Direct to Clearing)	80
	Other (Direct to Clearing)	230
All applicants	Placed	21,490

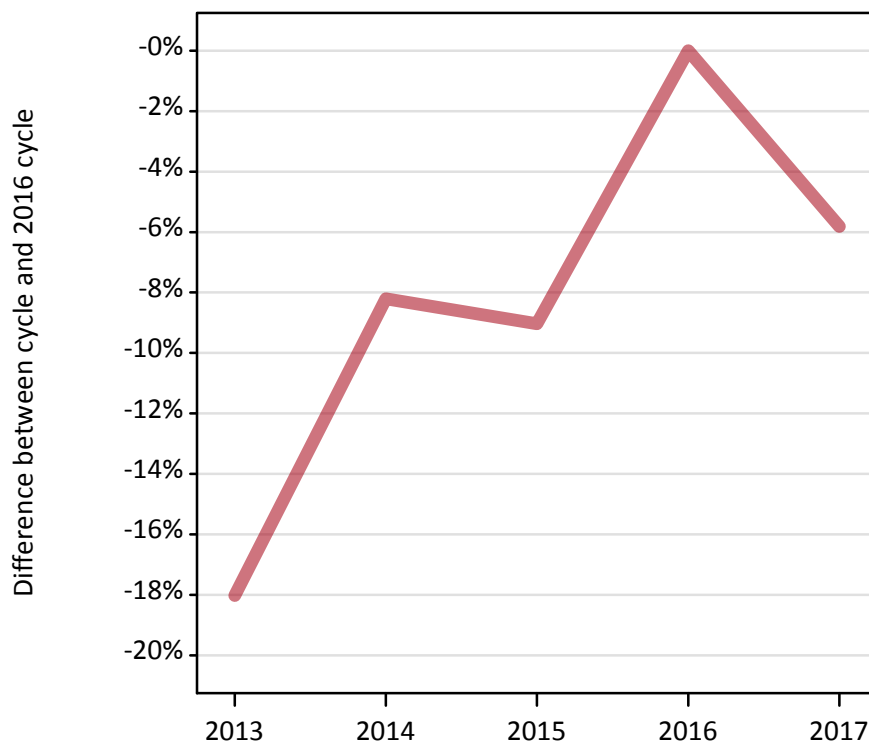
### AB.2 Summary of nursing applicants who are placed, holding offers or free to be placed in Clearing ( all domiciles )



### AB.3 Placed applicants to nursing from all domiciles: A level results day

Placed applicants to nursing: difference between cycle and 2016 cycle

Placed



### AB.4 Placed applicants to nursing from all domiciles: A level results day

Placed applicants to nursing: applicants at A level results day

Applicant type	Status	2013	2014	2015	2016	2017
All applicants	Placed	18,710	20,950	20,760	22,820	21,490

### AB.5 Placed applicants to nursing from all domiciles: A level results day

Placed applicants to nursing: difference between cycle and 2016 cycle

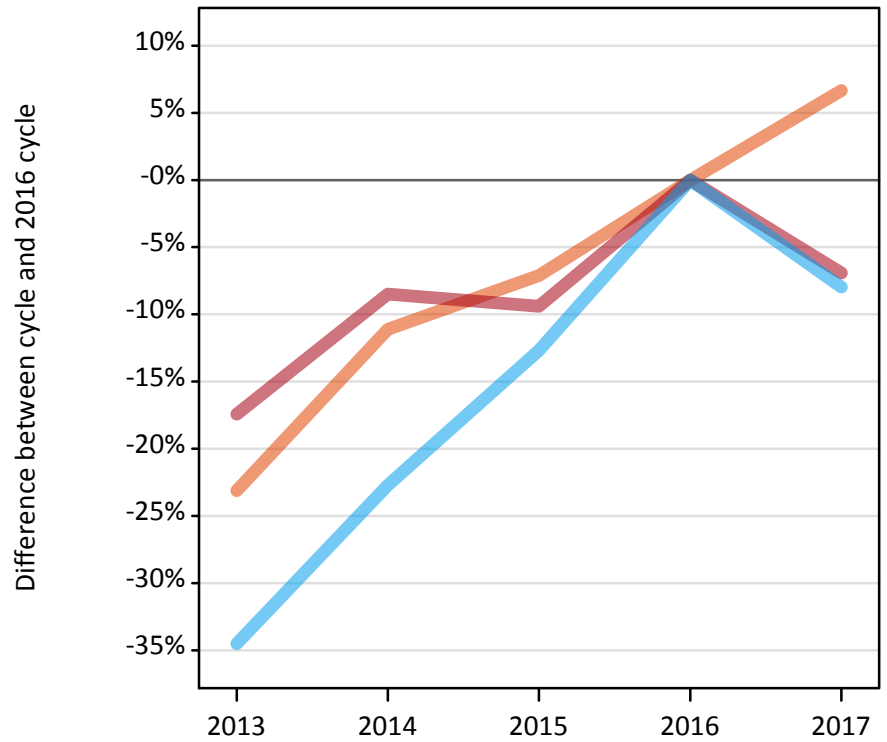
Applicant type	Status	2013	2014	2015	2016	2017
All applicants	Placed	-18%	-8%	-9%	0%	-6%

Note: Percentage changes are not plotted for lines with, on average, fewer than 30 applicants per year. As a result, lines for some, or all, of the states may be missing.

### AB.6 Placed main scheme applicants to nursing from all domiciles: A level results day

Selected placed routes: difference between cycle and 2016 cycle

- Placed (Clearing)
- Placed (Firm)
- Placed (Insurance)



### AB.7 Placed main scheme applicants to nursing from all domiciles: A level results day

All Main scheme placed routes (excluding Adjustment): applicants at A level results day

Applicant type	Status	2013	2014	2015	2016	2017
Main scheme	Placed (Clearing)	170	200	210	230	240
	Placed (Firm)	17,720	19,630	19,440	21,460	19,970
	Placed (Insurance)	220	260	300	340	310
	Placed (Other)	560	840	780	750	890

### AB.8 Placed main scheme applicants to nursing from all domiciles: A level results day

Selected placed routes: difference between cycle and 2016 cycle

Applicant type	Status	2013	2014	2015	2016	2017
Main scheme	Placed (Clearing)	-23%	-11%	-7%	0%	7%
	Placed (Firm)	-17%	-9%	-9%	0%	-7%
	Placed (Insurance)	-35%	-23%	-13%	0%	-8%

Note: Percentage changes are not plotted for lines with, on average, fewer than 30 applicants per year. As a result, lines for some, or all, of the states may be missing.

**AB.9 Main scheme applicants placed to nursing through adjustment: A level results day**

Placed through adjustment: difference between cycle and 2016 cycle

**[Analysis on placed by adjustment available from 18 August 2017]**

**AB.10 Main scheme applicants placed to nursing through adjustment: A level results day**

Placed through adjustment: applicants at A level results day

**[Analysis on placed by adjustment available from 18 August 2017]**

**AB.11 Main scheme applicants placed to nursing through adjustment: A level results day**

Placed through adjustment: difference between cycle and 2016 cycle

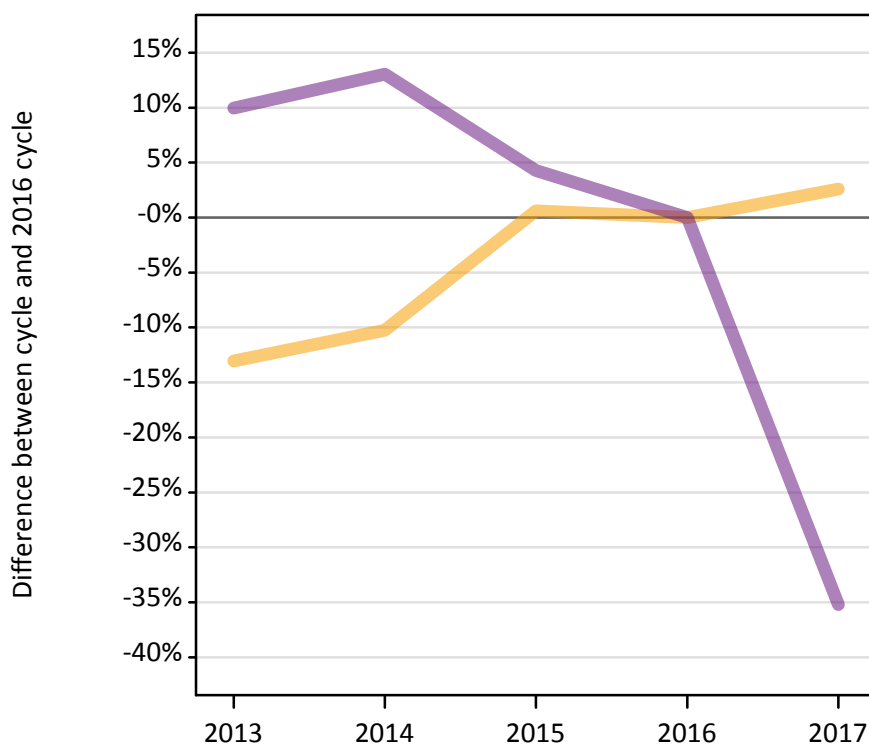
**[Analysis on placed by adjustment available from 18 August 2017]**

Note: Percentage changes are not plotted for lines with, on average, fewer than 30 applicants per year. As a result, lines for some, or all, of the states may be missing.

### AB.12 Main scheme applicants to nursing not currently placed from all domiciles: A level results day

Applicants in unplaced states: difference between cycle and 2016 cycle

— Holding offer  
— Free to be placed in Clearing



### AB.13 Main scheme applicants to nursing not currently placed from all domiciles: A level results day

Applicants in unplaced states: applicants at A level results day

Applicant type	Status	2013	2014	2015	2016	2017
Main scheme	Holding offer	6,250	6,450	7,230	7,190	7,370
	Free to be placed in Clearing	31,960	32,850	30,310	29,060	18,830

### AB.14 Main scheme applicants to nursing not currently placed from all domiciles: A level results day

Applicants in unplaced states: difference between cycle and 2016 cycle

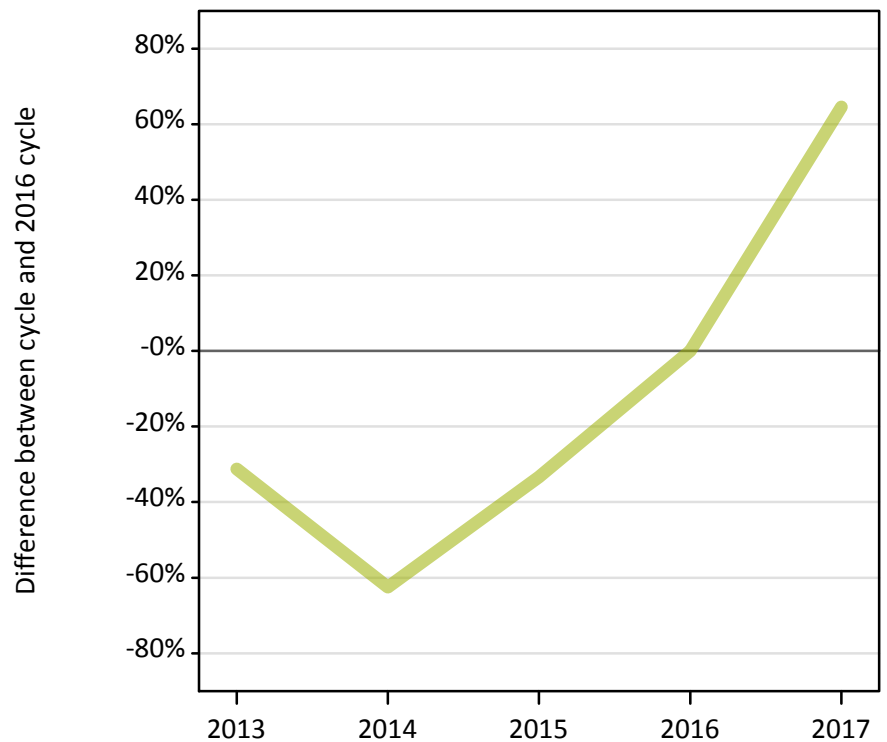
Applicant type	Status	2013	2014	2015	2016	2017
Main scheme	Holding offer	-13%	-10%	1%	0%	3%
	Free to be placed in Clearing	10%	13%	4%	0%	-35%

Note: Percentage changes are not plotted for lines with, on average, fewer than 30 applicants per year. As a result, lines for some, or all, of the states may be missing.

### AB.15 Direct to Clearing applicants from all domiciles: A level results day

Placed (Direct to Clearing): difference between cycle and 2016 cycle

Placed (Direct to Clearing)



### AB.16 Direct to Clearing applicants from all domiciles: A level results day

Direct to Clearing A level results day

Applicant type	Status	2013	2014	2015	2016	2017
Direct to Clearing	Placed (Direct to Clearing)	30	20	30	50	80
	Other (Direct to Clearing)	110	90	150	150	230

### AB.17 Direct to Clearing applicants from all domiciles: A level results day

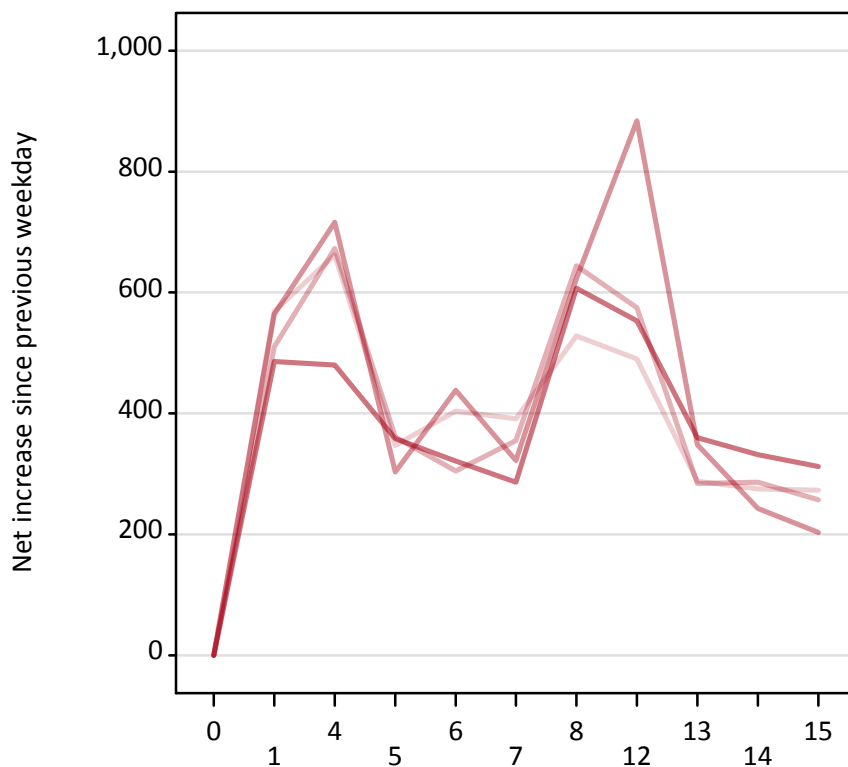
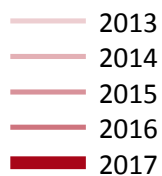
Placed (Direct to Clearing): difference between cycle and 2016 cycle

Applicant type	Status	2013	2014	2015	2016	2017
Direct to Clearing	Placed (Direct to Clearing)	-31%	-63%	-33%	0%	65%

Note: Percentage changes are not plotted for lines with, on average, fewer than 30 applicants per year. As a result, lines for some, or all, of the states may be missing.

### AB.18 All Placed: Daily net change (from all domiciles)

Net increase since previous weekday (2017 cycle up to A level results day)



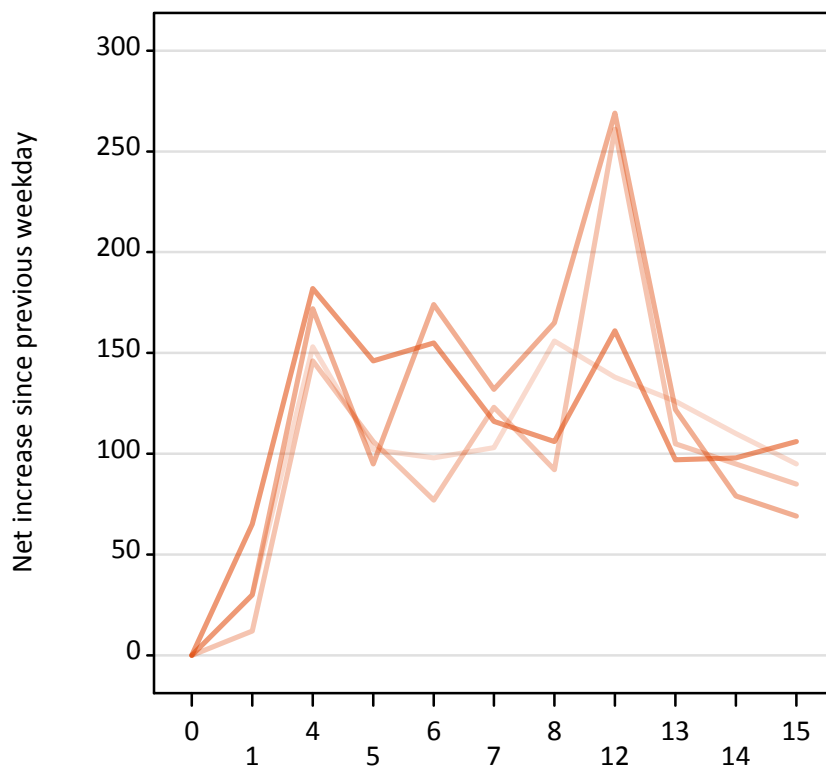
### AB.19 All Placed: Daily net change (from all domiciles)

Net increase since previous weekday (2017 cycle up to A level results day)

Applicant status, days since A level results day		2013	2014	2015	2016	2017
All Placed	0	0	0	0	0	0
	1	570	510	560	490	
	4	660	670	720	480	
	5	350	360	300	360	
	6	400	310	440	320	
	7	390	360	320	290	
	8	530	640	620	610	
	12	490	580	880	550	
	13	290	280	350	360	
	14	280	290	240	330	
	15	270	260	200	310	

**AB.20 Placed through Clearing only: Daily net change (from all domiciles)**

Net increase since previous weekday (2017 cycle up to A level results day)



**AB.21 Placed through Clearing only: Daily net change (from all domiciles)**

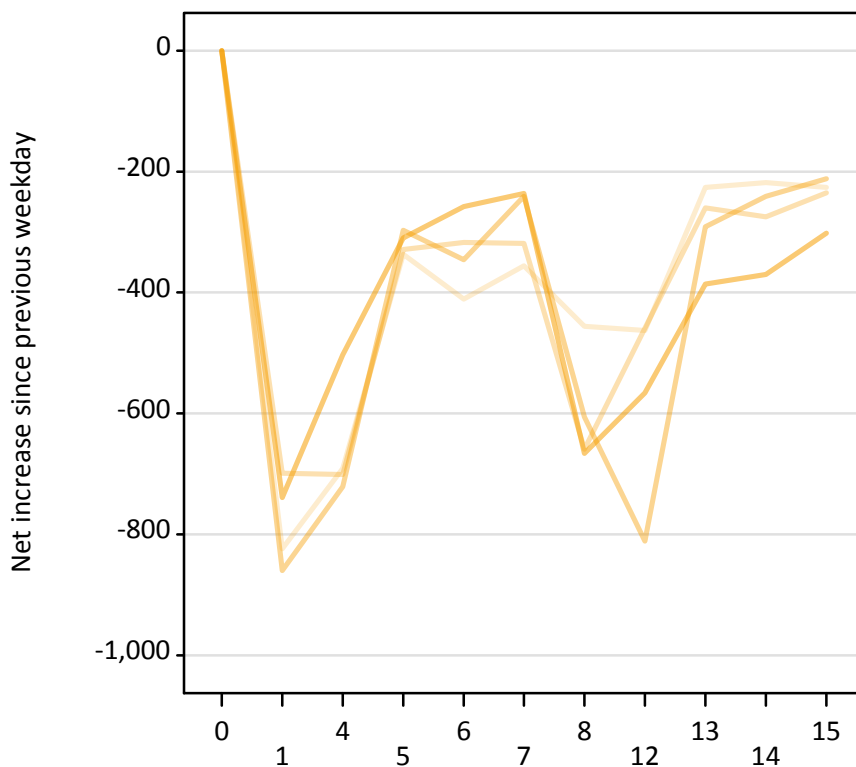
Net increase since previous weekday (2017 cycle up to A level results day)

Applicant status, days since A level results day		2013	2014	2015	2016	2017
Placed through Clearing only	0	0	0	0	0	0
	1	30	10	30	70	
	4	150	150	170	180	
	5	100	110	100	150	
	6	100	80	170	160	
	7	100	120	130	120	
	8	160	90	170	110	
	12	140	260	270	160	
	13	130	110	120	100	
	14	110	100	80	100	
	15	100	90	70	110	



### AB.22 Holding Offer: Daily net change (from all domiciles)

Net increase since previous weekday (2017 cycle up to A level results day)



### AB.23 Holding Offer: Daily net change (from all domiciles)

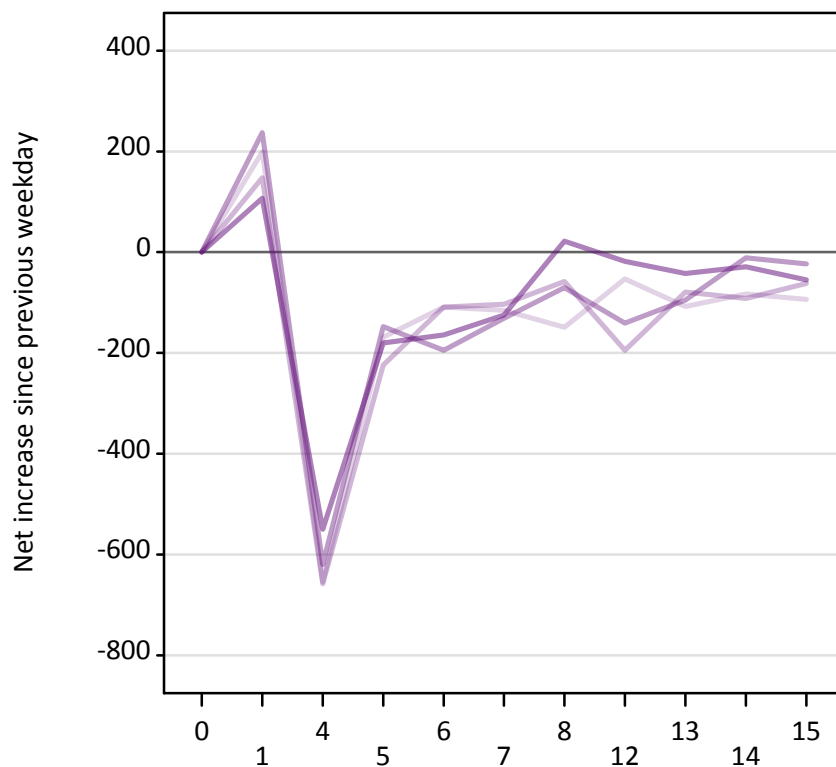
Net increase since previous weekday (2017 cycle up to A level results day)

Applicant status, days since A level results day		2013	2014	2015	2016	2017
Holding Offer	0	0	0	0	0	0
	1	-820	-700	-860	-740	
	4	-690	-700	-720	-500	
	5	-340	-330	-300	-310	
	6	-410	-320	-350	-260	
	7	-360	-320	-240	-240	
	8	-460	-660	-610	-670	
	12	-460	-460	-810	-570	
	13	-230	-260	-290	-390	
	14	-220	-280	-240	-370	
	15	-230	-240	-210	-300	

**AB.24 Free to be placed in Clearing: Daily net change (from all domiciles)**

Net increase since previous weekday (2017 cycle up to A level results day)

- 2013
- 2014
- 2015
- 2016
- 2017



**AB.25 Free to be placed in Clearing: Daily net change (from all domiciles)**

Net increase since previous weekday (2017 cycle up to A level results day)

Applicant status, days since A level results day		2013	2014	2015	2016	2017
Free to be placed in Clearing	0	0	0	0	0	0
	1	200	150	240	110	110
	4	-650	-660	-620	-550	-550
	5	-170	-220	-150	-180	-180
	6	-110	-110	-200	-160	-160
	7	-120	-100	-130	-130	-130
	8	-150	-60	-70	20	20
	12	-50	-200	-140	-20	-20
	13	-110	-80	-100	-40	-40
	14	-80	-90	-10	-30	-30
	15	-90	-60	-20	-60	-60