

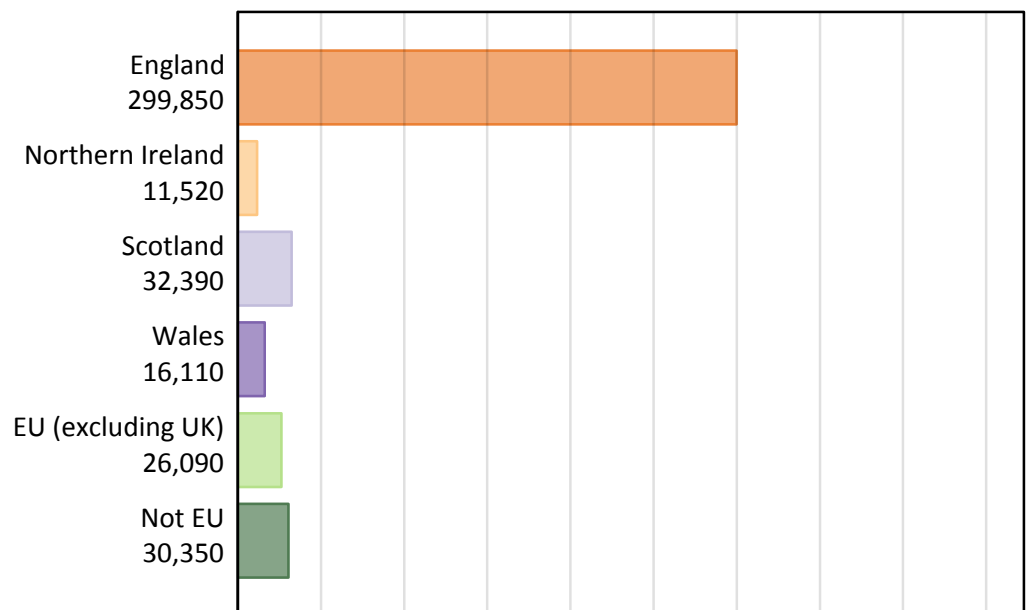
Daily Clearing Analysis: Country

Analysis at 00:05 on Thursday 17 August 2017 (A level results day)

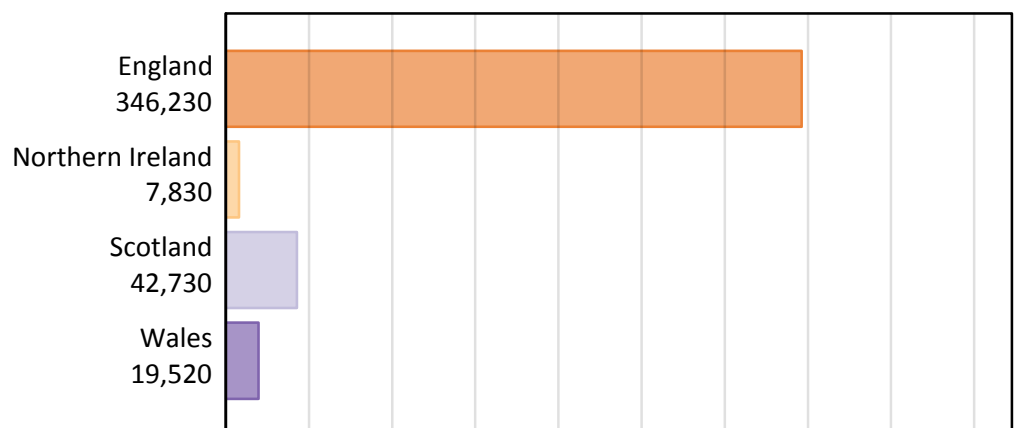
B.1 Placed applicants by country of provider and domicile, 2017 cycle

Domicile of applicant	Country of provider				
	England	Northern Ireland	Scotland	Wales	UK
England	287,100	240	4,300	8,210	299,850
Northern Ireland	3,280	7,100	1,000	150	11,520
Scotland	1,390	30	30,930	40	32,390
Wales	7,040	10	110	8,940	16,110
EU (excluding UK)	20,690	280	3,840	1,280	26,090
Not EU	26,730	170	2,550	910	30,350
All	346,230	7,830	42,730	19,520	416,310

B.2 Placed applicants by domicile group

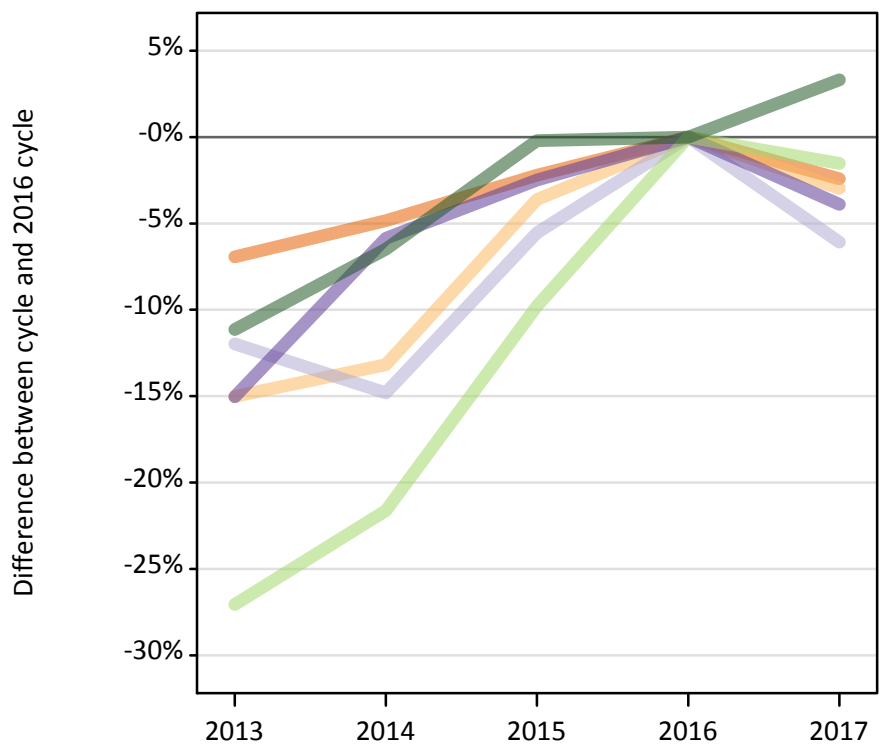


B.3 Placed applicants by country of provider



B.4 Placed applicants at A level results day: providers in England

Selected applicant domiciles: difference between cycle and 2016 cycle (at A level results day)



B.5 Placed applicants at A level results day: providers in England

Placed applicants by domicile (at A level results day)

Domicile of applicant	2013	2014	2015	2016	2017
England	273,810	279,980	287,690	294,210	287,100
Northern Ireland	2,870	2,930	3,250	3,380	3,280
Scotland	1,300	1,260	1,400	1,480	1,390
Wales	6,230	6,900	7,150	7,330	7,040
EU (excluding UK)	15,330	16,470	18,960	21,010	20,690
Not EU	22,990	24,190	25,820	25,870	26,730

B.6 Placed applicants at A level results day: providers in England

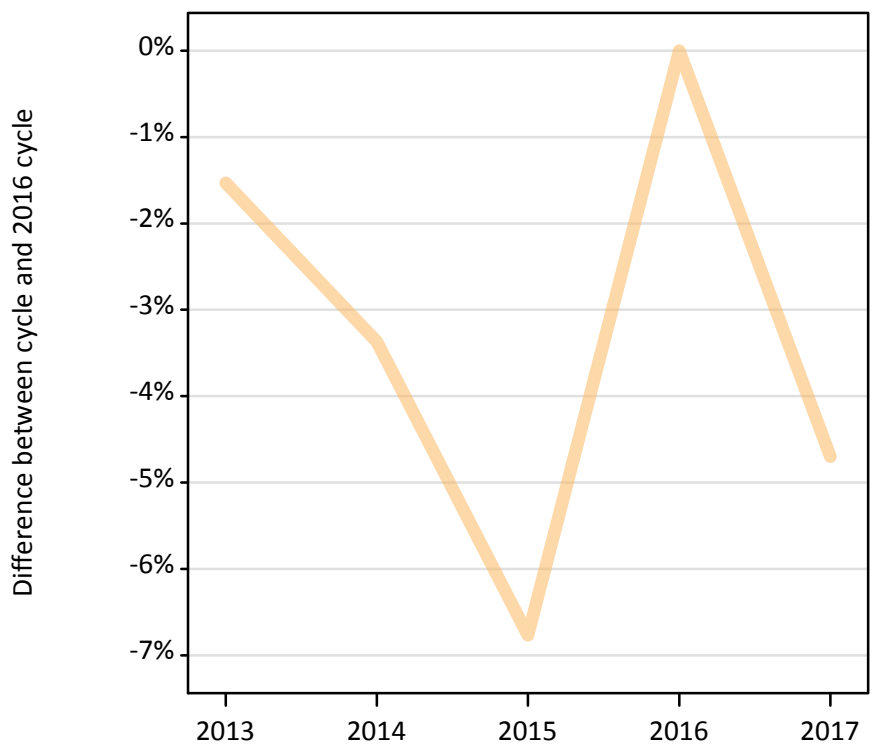
Selected applicant domiciles: difference between cycle and 2016 cycle (at A level results day)

Domicile of applicant	2013	2014	2015	2016	2017
England	-7%	-5%	-2%	0%	-2%
Northern Ireland	-15%	-13%	-4%	0%	-3%
Scotland	-12%	-15%	-6%	0%	-6%
Wales	-15%	-6%	-2%	0%	-4%
EU (excluding UK)	-27%	-22%	-10%	0%	-2%
Not EU	-11%	-6%	-0%	0%	3%

B.7 Placed applicants at A level results day: providers in Northern Ireland

Selected applicant domiciles: difference between cycle and 2016 cycle (at A level results day)

Northern Ireland



B.8 Placed applicants at A level results day: providers in Northern Ireland

Placed applicants by domicile (at A level results day)

Domicile of applicant	2013	2014	2015	2016	2017
England	190	280	490	250	240
Northern Ireland	7,330	7,200	6,940	7,450	7,100
Scotland	10	20	20	10	30
Wales	0	10	10	10	10
EU (excluding UK)	340	380	320	270	280
Not EU	150	160	130	190	170

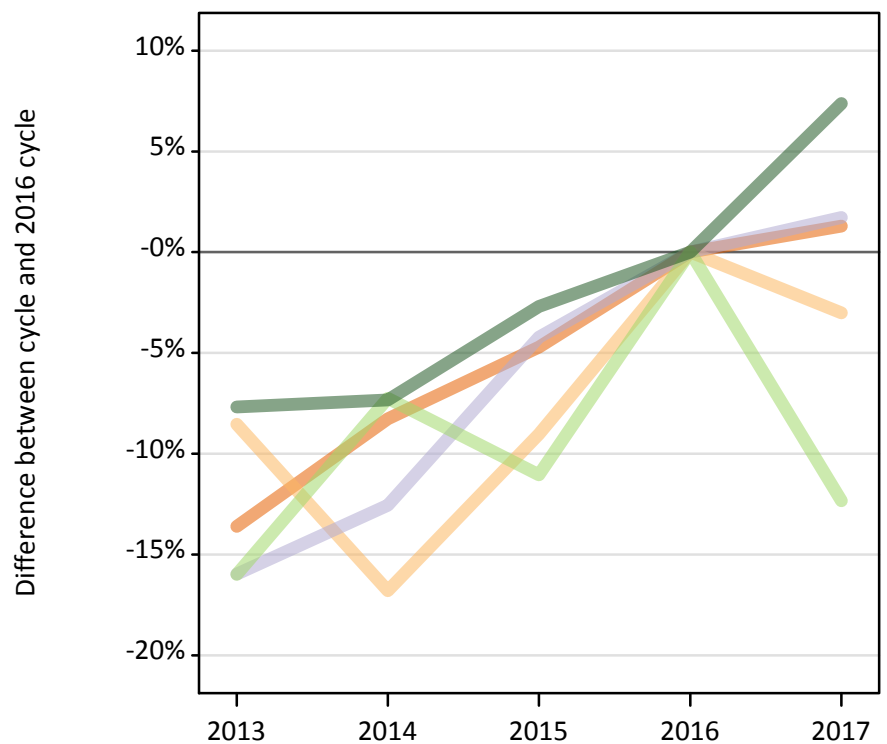
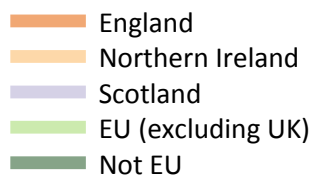
B.9 Placed applicants at A level results day: providers in Northern Ireland

Selected applicant domiciles: difference between cycle and 2016 cycle (at A level results day)

Domicile of applicant	2013	2014	2015	2016	2017
Northern Ireland	-2%	-3%	-7%	0%	-5%

B.10 Placed applicants at A level results day: providers in Scotland

Selected applicant domiciles: difference between cycle and 2016 cycle (at A level results day)



B.11 Placed applicants at A level results day: providers in Scotland

Placed applicants by domicile (at A level results day)

Domicile of applicant	2013	2014	2015	2016	2017
England	3,670	3,900	4,050	4,250	4,300
Northern Ireland	940	860	940	1,030	1,000
Scotland	25,550	26,590	29,120	30,400	30,930
Wales	90	90	90	110	110
EU (excluding UK)	3,680	4,070	3,900	4,380	3,840
Not EU	2,190	2,200	2,310	2,370	2,550

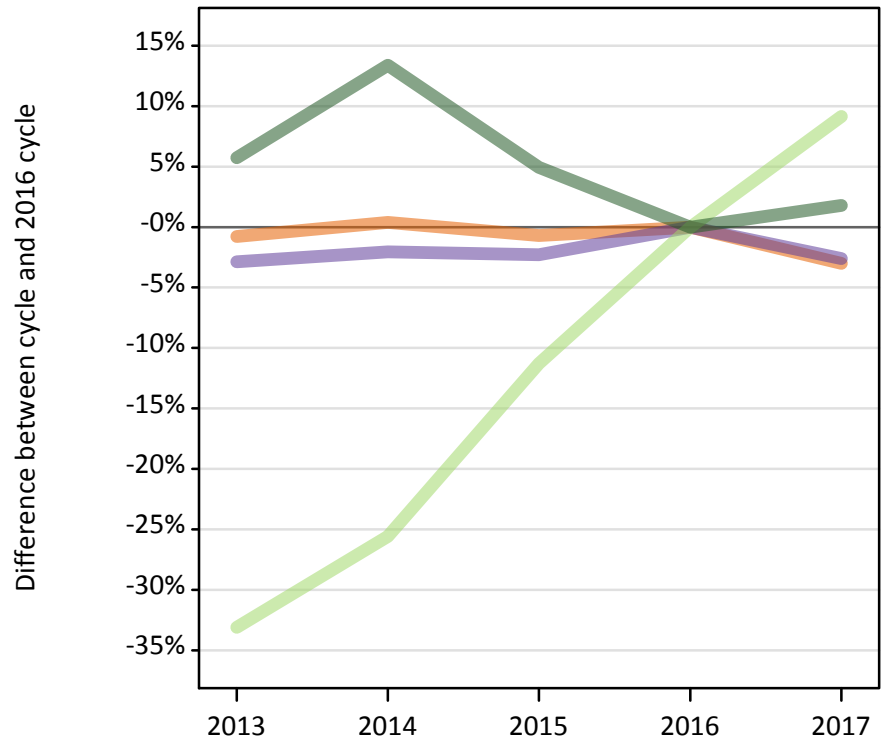
B.12 Placed applicants at A level results day: providers in Scotland

Selected applicant domiciles: difference between cycle and 2016 cycle (at A level results day)

Domicile of applicant	2013	2014	2015	2016	2017
England	-14%	-8%	-5%	0%	1%
Northern Ireland	-9%	-17%	-9%	0%	-3%
Scotland	-16%	-13%	-4%	0%	2%
EU (excluding UK)	-16%	-7%	-11%	0%	-12%
Not EU	-8%	-7%	-3%	0%	7%

B.13 Placed applicants at A level results day: providers in Wales

Selected applicant domiciles: difference between cycle and 2016 cycle (at A level results day)



B.14 Placed applicants at A level results day: providers in Wales

Placed applicants by domicile (at A level results day)

Domicile of applicant	2013	2014	2015	2016	2017
England	8,400	8,500	8,410	8,470	8,210
Northern Ireland	140	130	130	150	150
Scotland	50	50	40	40	40
Wales	8,920	8,990	8,970	9,180	8,940
EU (excluding UK)	780	870	1,040	1,170	1,280
Not EU	940	1,010	930	890	910

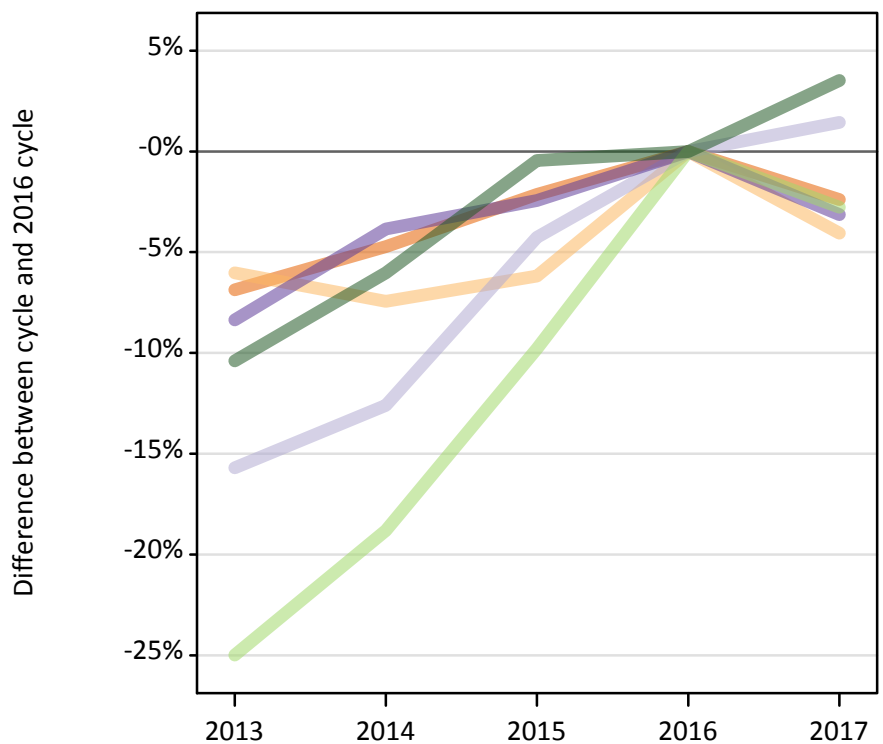
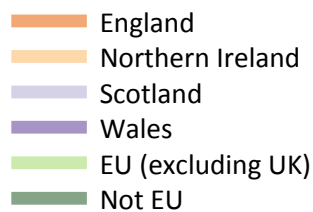
B.15 Placed applicants at A level results day: providers in Wales

Selected applicant domiciles: difference between cycle and 2016 cycle (at A level results day)

Domicile of applicant	2013	2014	2015	2016	2017
England	-1%	0%	-1%	0%	-3%
Wales	-3%	-2%	-2%	0%	-3%
EU (excluding UK)	-33%	-26%	-11%	0%	9%
Not EU	6%	13%	5%	0%	2%

B.16 Placed applicants at A level results day: providers in the UK

Selected applicant domiciles: difference between cycle and 2016 cycle (at A level results day)



B.17 Placed applicants at A level results day: providers in the UK

Placed applicants by domicile (at A level results day)

Domicile of applicant	2013	2014	2015	2016	2017
England	286,070	292,650	300,630	307,170	299,850
Northern Ireland	11,280	11,110	11,260	12,000	11,520
Scotland	26,910	27,910	30,570	31,930	32,390
Wales	15,240	15,980	16,220	16,630	16,110
EU (excluding UK)	20,130	21,790	24,210	26,830	26,090
Not EU	26,280	27,560	29,190	29,320	30,350

B.18 Placed applicants at A level results day: providers in the UK

Selected applicant domiciles: difference between cycle and 2016 cycle (at A level results day)

Domicile of applicant	2013	2014	2015	2016	2017
England	-7%	-5%	-2%	0%	-2%
Northern Ireland	-6%	-7%	-6%	0%	-4%
Scotland	-16%	-13%	-4%	0%	1%
Wales	-8%	-4%	-2%	0%	-3%
EU (excluding UK)	-25%	-19%	-10%	0%	-3%
Not EU	-10%	-6%	-0%	0%	4%

B.19 Placed applicants at A level results day: domiciled in England

Selected provider countries: difference between cycle and 2016 cycle (at A level results day)



B.20 Placed applicants at A level results day: domiciled in England

Placed applicants by provider country (at A level results day)

Country of provider	2013	2014	2015	2016	2017
England	273,810	279,980	287,690	294,210	287,100
Northern Ireland	190	280	490	250	240
Scotland	3,670	3,900	4,050	4,250	4,300
Wales	8,400	8,500	8,410	8,470	8,210

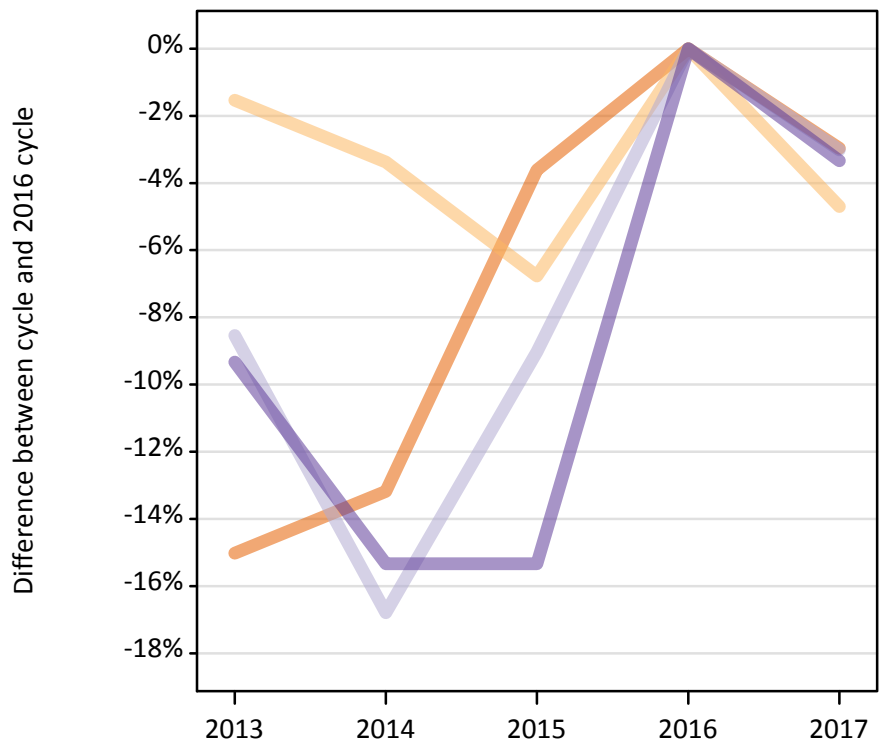
B.21 Placed applicants at A level results day: domiciled in England

Selected provider countries: difference between cycle and 2016 cycle (at A level results day)

Country of provider	2013	2014	2015	2016	2017
England	-7%	-5%	-2%	0%	-2%
Northern Ireland	-23%	10%	97%	0%	-5%
Scotland	-14%	-8%	-5%	0%	1%
Wales	-1%	0%	-1%	0%	-3%

B.22 Placed applicants at A level results day: domiciled in Northern Ireland

Selected provider countries: difference between cycle and 2016 cycle (at A level results day)



B.23 Placed applicants at A level results day: domiciled in Northern Ireland

Placed applicants by provider country (at A level results day)

Country of provider	2013	2014	2015	2016	2017
England	2,870	2,930	3,250	3,380	3,280
Northern Ireland	7,330	7,200	6,940	7,450	7,100
Scotland	940	860	940	1,030	1,000
Wales	140	130	130	150	150

B.24 Placed applicants at A level results day: domiciled in Northern Ireland

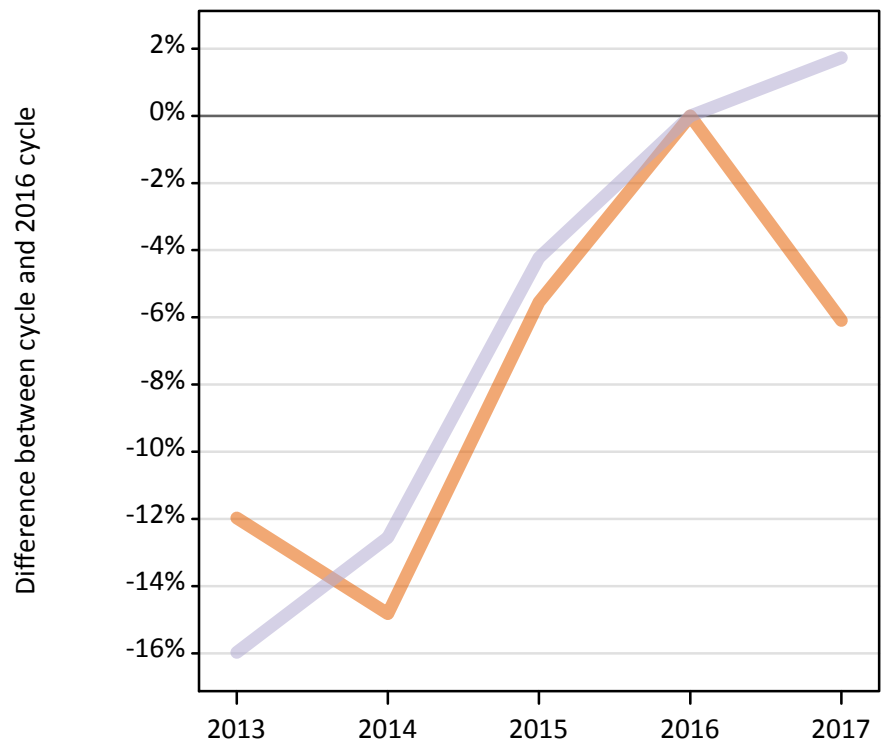
Selected provider countries: difference between cycle and 2016 cycle (at A level results day)

Country of provider	2013	2014	2015	2016	2017
England	-15%	-13%	-4%	0%	-3%
Northern Ireland	-2%	-3%	-7%	0%	-5%
Scotland	-9%	-17%	-9%	0%	-3%
Wales	-9%	-15%	-15%	0%	-3%

B.25 Placed applicants at A level results day: domiciled in Scotland

Selected provider countries: difference between cycle and 2016 cycle (at A level results day)

England
Scotland



B.26 Placed applicants at A level results day: domiciled in Scotland

Placed applicants by provider country (at A level results day)

Country of provider	2013	2014	2015	2016	2017
England	1,300	1,260	1,400	1,480	1,390
Northern Ireland	10	20	20	10	30
Scotland	25,550	26,590	29,120	30,400	30,930
Wales	50	50	40	40	40

B.27 Placed applicants at A level results day: domiciled in Scotland

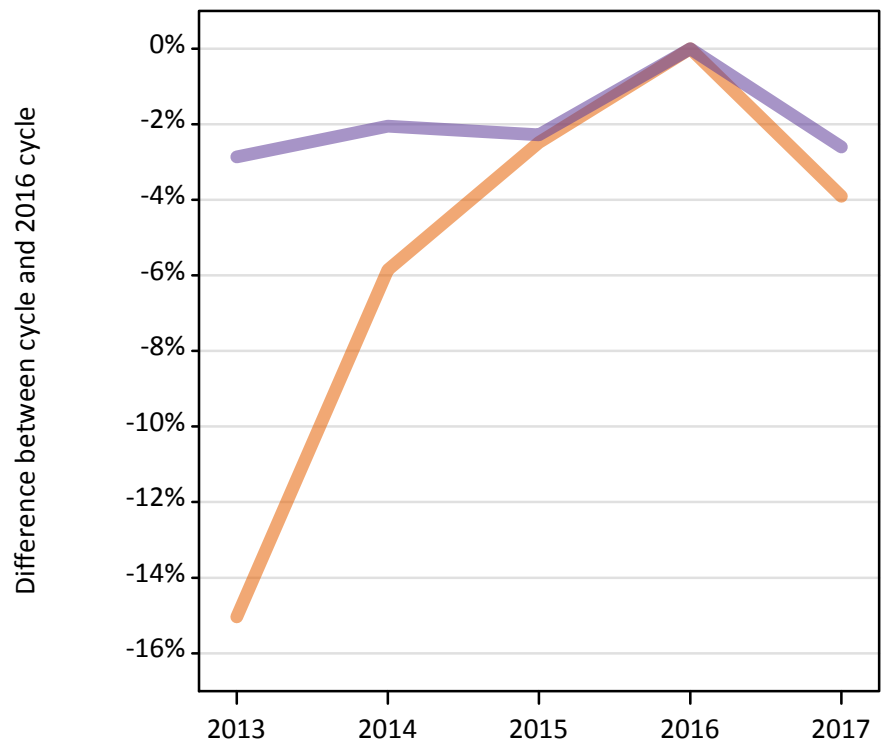
Selected provider countries: difference between cycle and 2016 cycle (at A level results day)

Country of provider	2013	2014	2015	2016	2017
England	-12%	-15%	-6%	0%	-6%
Scotland	-16%	-13%	-4%	0%	2%

B.28 Placed applicants at A level results day: domiciled in Wales

Selected provider countries: difference between cycle and 2016 cycle (at A level results day)

England
Wales



B.29 Placed applicants at A level results day: domiciled in Wales

Placed applicants by provider country (at A level results day)

Country of provider	2013	2014	2015	2016	2017
England	6,230	6,900	7,150	7,330	7,040
Northern Ireland	0	10	10	10	10
Scotland	90	90	90	110	110
Wales	8,920	8,990	8,970	9,180	8,940

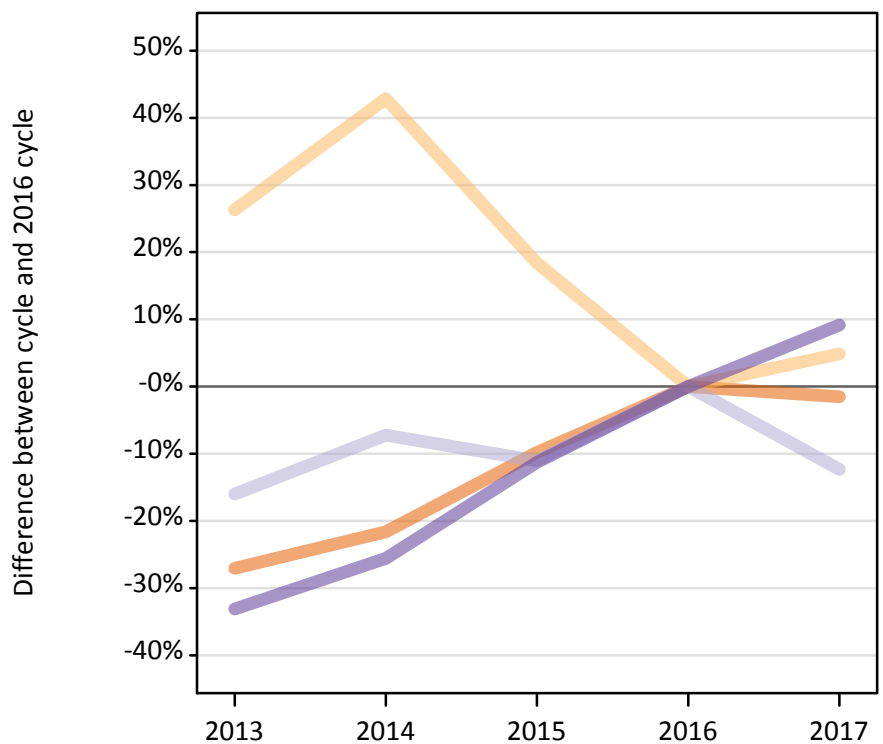
B.30 Placed applicants at A level results day: domiciled in Wales

Selected provider countries: difference between cycle and 2016 cycle (at A level results day)

Country of provider	2013	2014	2015	2016	2017
England	-15%	-6%	-2%	0%	-4%
Wales	-3%	-2%	-2%	0%	-3%

B.31 Placed applicants at A level results day: domiciled in EU (excluding UK)

Selected provider countries: difference between cycle and 2016 cycle (at A level results day)



B.32 Placed applicants at A level results day: domiciled in EU (excluding UK)

Placed applicants by provider country (at A level results day)

Country of provider	2013	2014	2015	2016	2017
England	15,330	16,470	18,960	21,010	20,690
Northern Ireland	340	380	320	270	280
Scotland	3,680	4,070	3,900	4,380	3,840
Wales	780	870	1,040	1,170	1,280

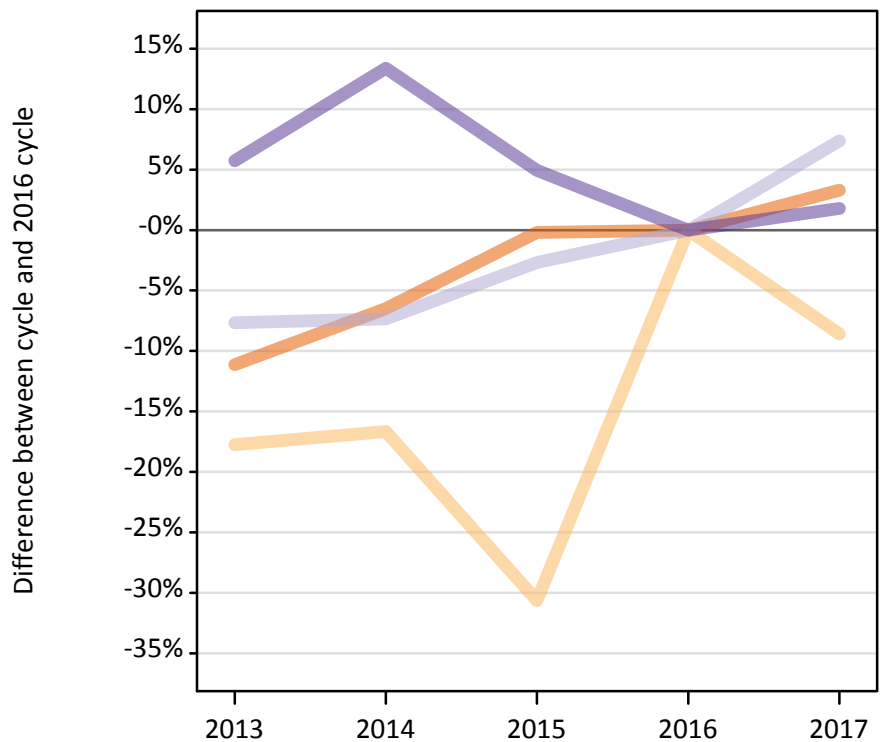
B.33 Placed applicants at A level results day: domiciled in EU (excluding UK)

Selected provider countries: difference between cycle and 2016 cycle (at A level results day)

Country of provider	2013	2014	2015	2016	2017
England	-27%	-22%	-10%	0%	-2%
Northern Ireland	26%	43%	18%	0%	5%
Scotland	-16%	-7%	-11%	0%	-12%
Wales	-33%	-26%	-11%	0%	9%

B.34 Placed applicants at A level results day: domiciled in Not EU

Selected provider countries: difference between cycle and 2016 cycle (at A level results day)



B.35 Placed applicants at A level results day: domiciled in Not EU

Placed applicants by provider country (at A level results day)

Country of provider	2013	2014	2015	2016	2017
England	22,990	24,190	25,820	25,870	26,730
Northern Ireland	150	160	130	190	170
Scotland	2,190	2,200	2,310	2,370	2,550
Wales	940	1,010	930	890	910

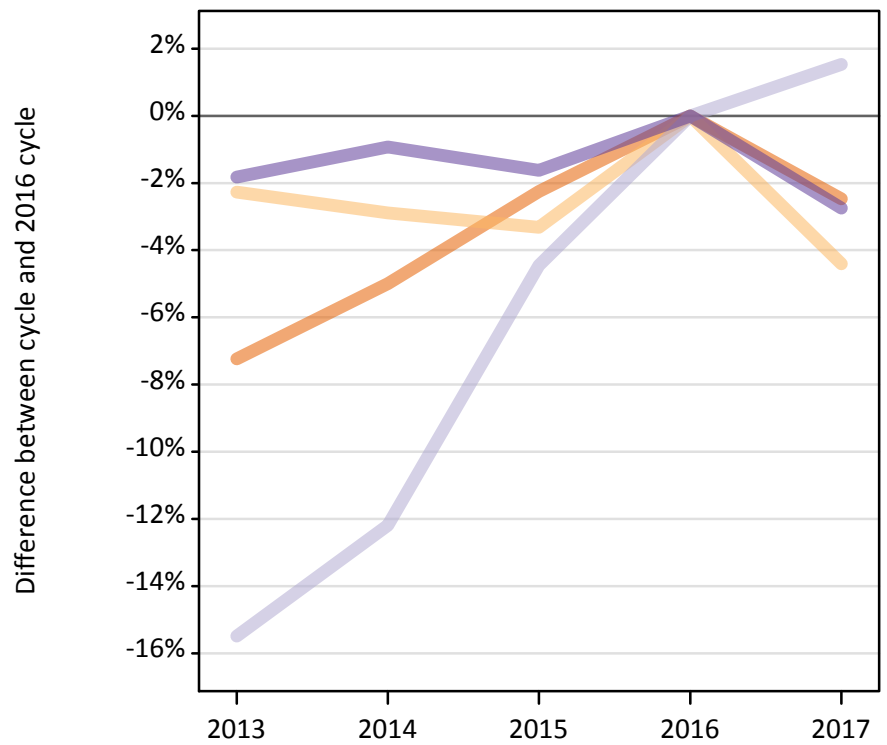
B.36 Placed applicants at A level results day: domiciled in Not EU

Selected provider countries: difference between cycle and 2016 cycle (at A level results day)

Country of provider	2013	2014	2015	2016	2017
England	-11%	-6%	-0%	0%	3%
Northern Ireland	-18%	-17%	-31%	0%	-9%
Scotland	-8%	-7%	-3%	0%	7%
Wales	6%	13%	5%	0%	2%

B.37 Placed applicants at A level results day: domiciled in UK

Selected provider countries: difference between cycle and 2016 cycle (at A level results day)



B.38 Placed applicants at A level results day: domiciled in UK

Placed applicants by provider country (at A level results day)

Country of provider	2013	2014	2015	2016	2017
England	284,210	291,070	299,480	306,390	298,810
Northern Ireland	7,540	7,490	7,460	7,720	7,380
Scotland	30,250	31,430	34,200	35,790	36,340
Wales	17,510	17,670	17,540	17,830	17,340

B.39 Placed applicants at A level results day: domiciled in UK

Selected provider countries: difference between cycle and 2016 cycle (at A level results day)

Country of provider	2013	2014	2015	2016	2017
England	-7%	-5%	-2%	0%	-2%
Northern Ireland	-2%	-3%	-3%	0%	-4%
Scotland	-15%	-12%	-4%	0%	2%
Wales	-2%	-1%	-2%	0%	-3%