

## B7 Nursing analysis at 00:05 on Tuesday 8 August 2017 (SQA results day)

### CB.1 Placed applicants to nursing by country of domicile and age group, 2017 cycle (SQA results day)

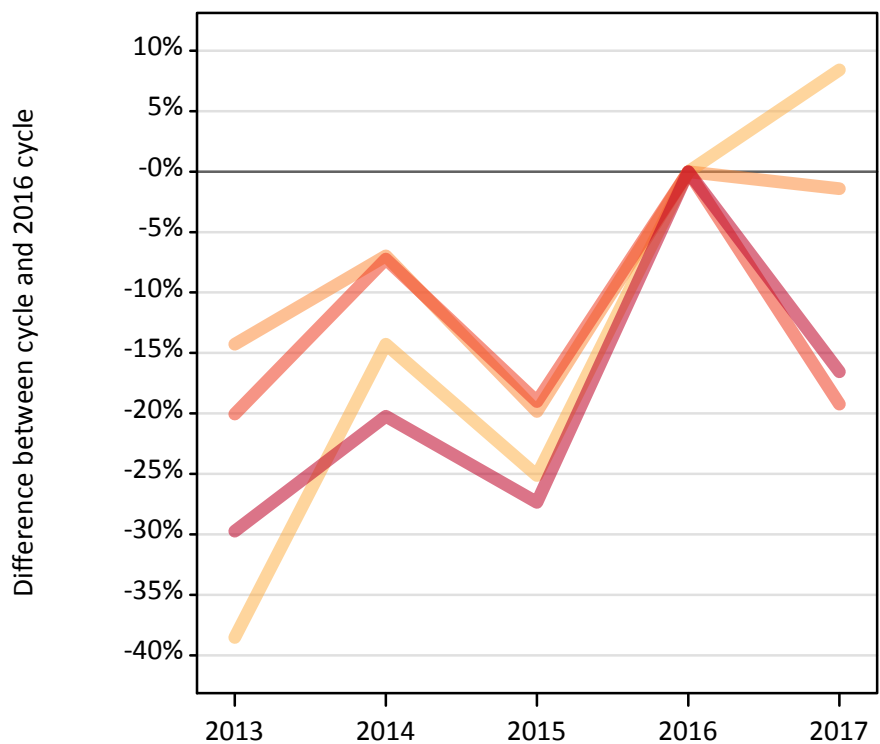
Domicile of applicant	Age group	2017
England	17 and under	0
	18	1,110
	19	1,330
	20 to 24	2,880
	25 and over	4,900
Northern Ireland	17 and under	0
	18	20
	19	80
	20 to 24	190
	25 and over	200
Scotland	17 and under	20
	18	500
	19	250
	20 to 24	640
	25 and over	1,110
Wales	17 and under	0
	18	40
	19	70
	20 to 24	160
	25 and over	200
UK	17 and under	20
	18	1,670
	19	1,730
	20 to 24	3,870
	25 and over	6,400

### CB.2 Proportion of 18 year old population placed by country of domicile, 2017 cycle (SQA results day)

Domicile of applicant	Age group	2017
England	18	0.2%
Northern Ireland	18	0.1%
Scotland	18	0.9%
Wales	18	0.1%

### CB.3 Placed applicants to nursing from England by age group at SQA results day

Selected age groups: difference between cycle and 2016 cycle



### CB.4 Placed applicants to nursing from England by age group at SQA results day

All age groups

Domicile of applicant	Age group	2013	2014	2015	2016	2017
England	17 and under	0	0	0	0	0
	18	630	880	770	1,020	1,110
	19	1,150	1,250	1,080	1,350	1,330
	20 to 24	2,850	3,310	2,890	3,570	2,880
	25 and over	4,120	4,680	4,260	5,870	4,900

### CB.5 Placed applicants to nursing from England by age group at SQA results day

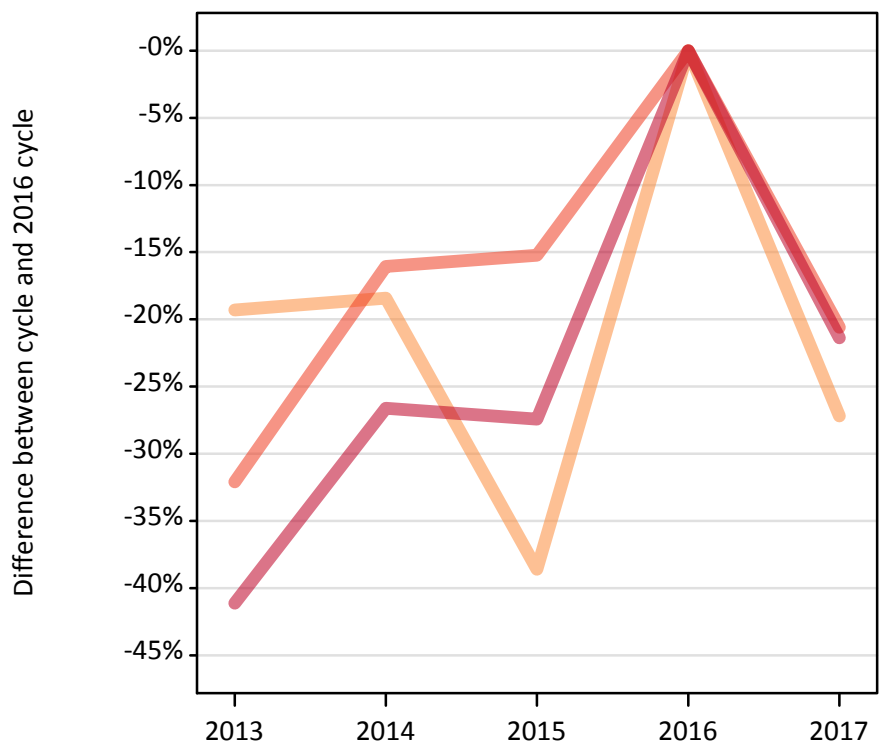
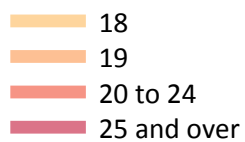
Selected age groups: difference between cycle and 2016 cycle

Domicile of applicant	Age group	2013	2014	2015	2016	2017
England	18	-39%	-14%	-25%	0%	8%
	19	-14%	-7%	-20%	0%	-1%
	20 to 24	-20%	-7%	-19%	0%	-19%
	25 and over	-30%	-20%	-27%	0%	-17%

Note: Percentage changes are not plotted for lines with, on average, fewer than 30 applicants per year. As a result, lines for some, or all, of the groups may be missing.

### CB.6 Placed applicants to nursing from Northern Ireland by age group at SQA results day

Selected age groups: difference between cycle and 2016 cycle



### CB.7 Placed applicants to nursing from Northern Ireland by age group at SQA results day

All age groups

Domicile of applicant	Age group	2013	2014	2015	2016	2017
Northern Ireland	17 and under	0	0	0	0	0
	18	20	20	20	30	20
	19	90	90	70	110	80
	20 to 24	170	200	210	240	190
	25 and over	150	180	180	250	200

### CB.8 Placed applicants to nursing from Northern Ireland by age group at SQA results day

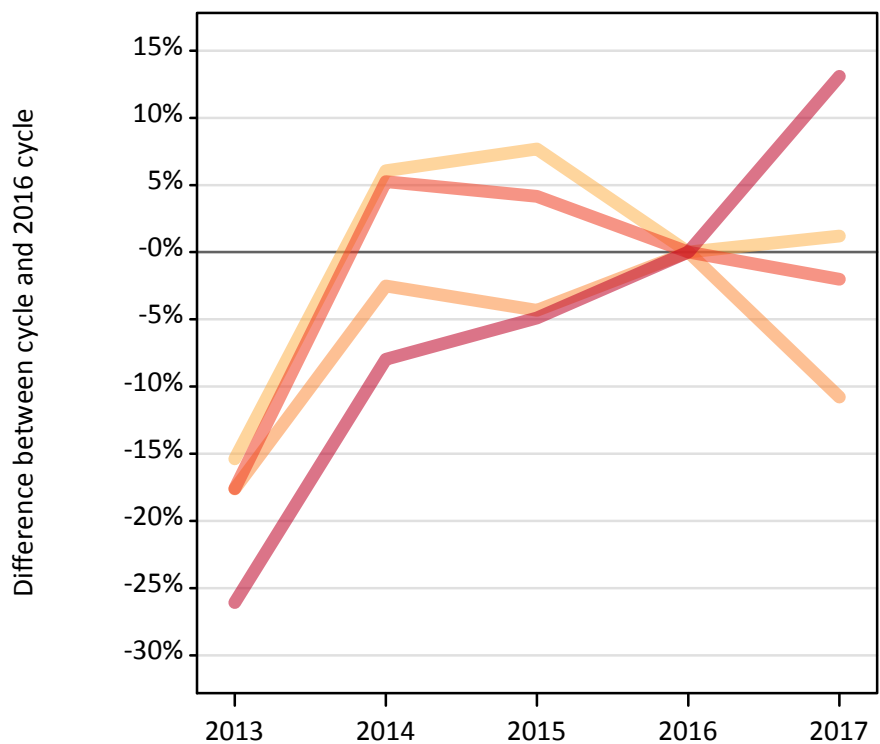
Selected age groups: difference between cycle and 2016 cycle

Domicile of applicant	Age group	2013	2014	2015	2016	2017
Northern Ireland	18	-50%	-33%	-23%	0%	-20%
	19	-19%	-18%	-39%	0%	-27%
	20 to 24	-32%	-16%	-15%	0%	-21%
	25 and over	-41%	-27%	-27%	0%	-21%

Note: Percentage changes are not plotted for lines with, on average, fewer than 30 applicants per year. As a result, lines for some, or all, of the groups may be missing.

### CB.9 Placed applicants to nursing from Scotland by age group at SQA results day

Selected age groups: difference between cycle and 2016 cycle



### CB.10 Placed applicants to nursing from Scotland by age group at SQA results day

All age groups

Domicile of applicant	Age group	2013	2014	2015	2016	2017
Scotland	17 and under	10	10	10	10	20
	18	420	520	530	490	500
	19	230	270	270	280	250
	20 to 24	530	680	680	650	640
	25 and over	720	900	930	980	1,110

### CB.11 Placed applicants to nursing from Scotland by age group at SQA results day

Selected age groups: difference between cycle and 2016 cycle

Domicile of applicant	Age group	2013	2014	2015	2016	2017
Scotland	18	-15%	6%	8%	0%	1%
	19	-18%	-3%	-4%	0%	-11%
	20 to 24	-18%	5%	4%	0%	-2%
	25 and over	-26%	-8%	-5%	0%	13%

Note: Percentage changes are not plotted for lines with, on average, fewer than 30 applicants per year. As a result, lines for some, or all, of the groups may be missing.

### CB.12 Placed applicants to nursing from Wales by age group at SQA results day

Selected age groups: difference between cycle and 2016 cycle



### CB.13 Placed applicants to nursing from Wales by age group at SQA results day

All age groups

Domicile of applicant	Age group	2013	2014	2015	2016	2017
Wales	17 and under	0	0	0	0	0
	18	20	30	20	40	40
	19	70	50	60	90	70
	20 to 24	130	120	140	210	160
	25 and over	150	140	200	240	200

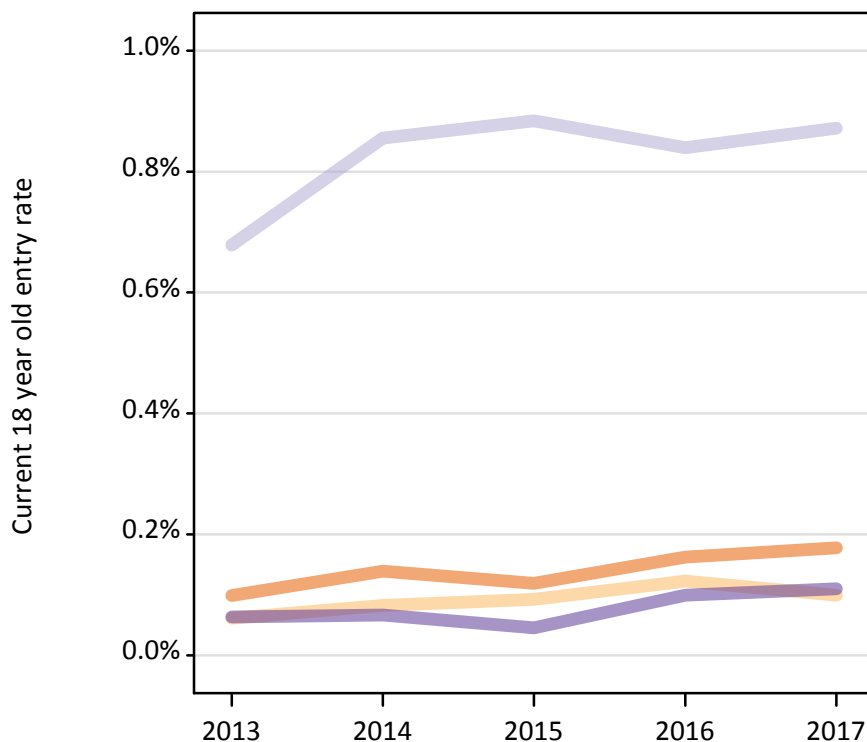
### CB.14 Placed applicants to nursing from Wales by age group at SQA results day

Selected age groups: difference between cycle and 2016 cycle

Domicile of applicant	Age group	2013	2014	2015	2016	2017
Wales	18	-33%	-31%	-53%	0%	8%
	19	-25%	-43%	-31%	0%	-20%
	20 to 24	-36%	-42%	-33%	0%	-21%
	25 and over	-38%	-42%	-18%	0%	-19%

Note: Percentage changes are not plotted for lines with, on average, fewer than 30 applicants per year. As a result, lines for some, or all, of the groups may be missing.

**CB.15 Entry rates for 18 year olds by UK country of domicile: SQA results day**  
Placed 18 year old applicants to nursing as a proportion of the 18 year old population



**CB.16 Entry rates for 18 year olds by UK country of domicile: SQA results day**  
Placed 18 year old applicants to nursing as a proportion of the 18 year old population

Domicile of applicant	Age group	2013	2014	2015	2016	2017
England	18	0.1%	0.1%	0.1%	0.2%	0.2%
Northern Ireland	18	0.1%	0.1%	0.1%	0.1%	0.1%
Scotland	18	0.7%	0.9%	0.9%	0.8%	0.9%
Wales	18	0.1%	0.1%	0.0%	0.1%	0.1%