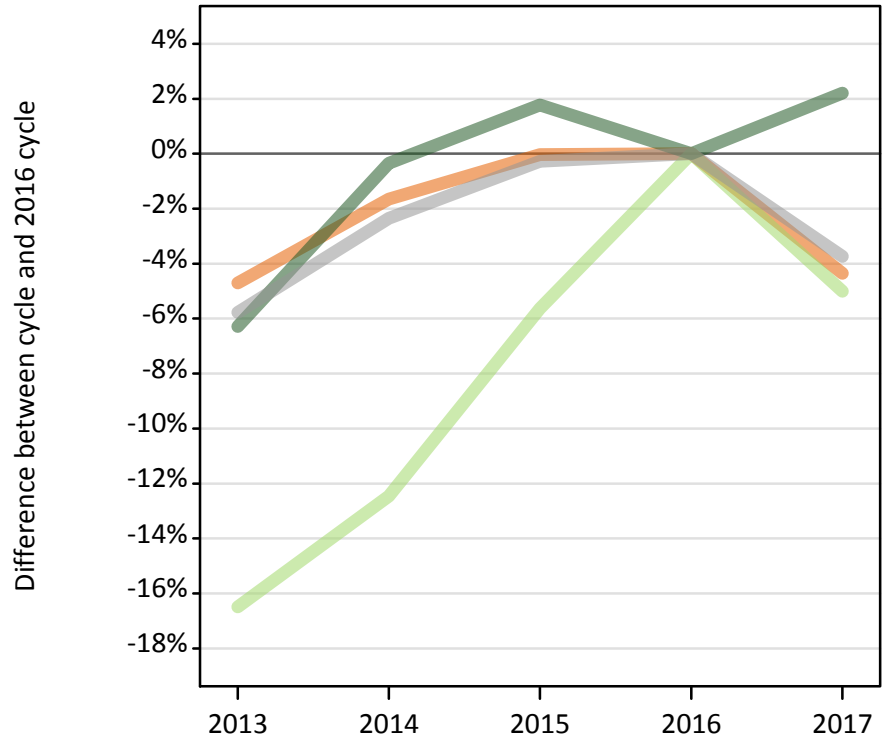


Applicants by domicile at the 30 June deadline

I.1.1 Applicants by domicile group

Difference between cycle and 2016 cycle

- UK
- EU (excluding UK)
- Not EU
- All domiciles



I.1.2 Applicants by domicile group

Domicile group of applicant	2013	2014	2015	2016	2017
UK	527,670	544,580	553,590	553,740	529,620
EU (excluding UK)	43,290	45,380	48,930	51,850	49,250
Not EU	64,940	69,060	70,530	69,300	70,830
All domiciles	635,910	659,030	673,040	674,890	649,700

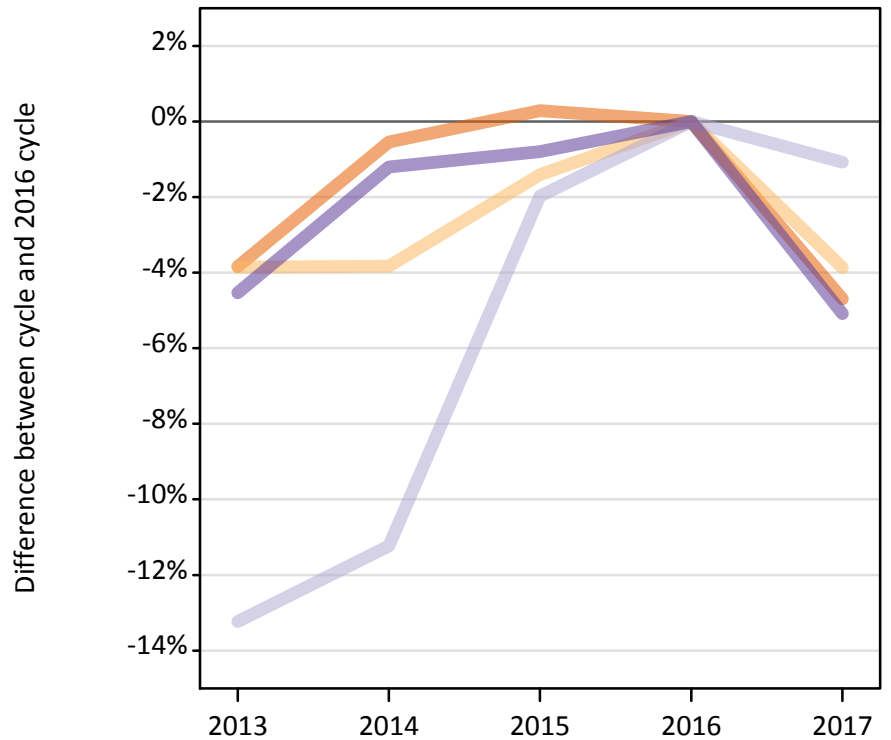
I.1.3 Applicants by domicile group

Difference between cycle and 2016 cycle

Domicile group of applicant	2013	2014	2015	2016	2017
UK	-5%	-2%	-0%	0%	-4%
EU (excluding UK)	-16%	-12%	-6%	0%	-5%
Not EU	-6%	-0%	2%	0%	2%
All domiciles	-6%	-2%	-0%	0%	-4%

I.1.4 Applicants by UK country of domicile

Difference between cycle and 2016 cycle



I.1.5 Applicants by UK country of domicile

Domicile group of applicant	2013	2014	2015	2016	2017
England	441,790	456,920	460,740	459,430	437,860
Northern Ireland	20,290	20,300	20,810	21,110	20,290
Scotland	42,930	43,910	48,490	49,470	48,940
Wales	22,660	23,450	23,550	23,740	22,530
UK	527,670	544,580	553,590	553,740	529,620

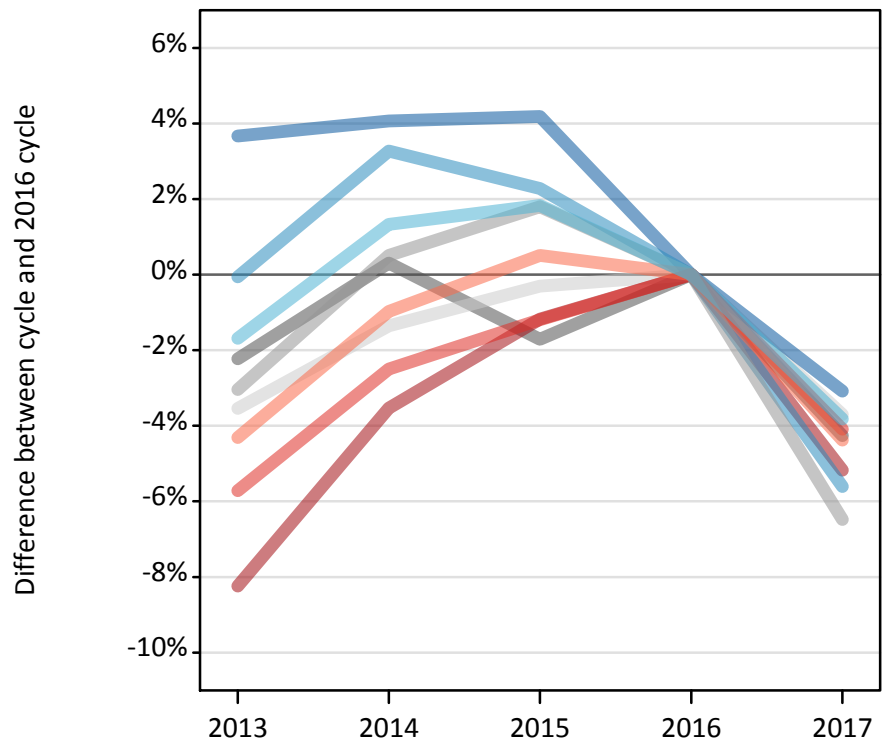
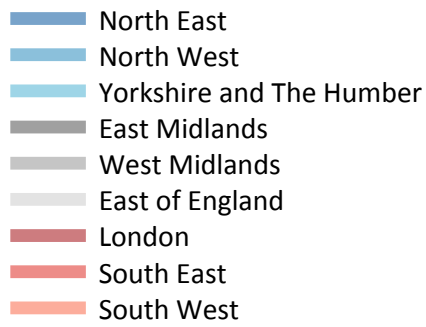
I.1.6 Applicants by UK country of domicile

Difference between cycle and 2016 cycle

Domicile group of applicant	2013	2014	2015	2016	2017
England	-4%	-1%	0%	0%	-5%
Northern Ireland	-4%	-4%	-1%	0%	-4%
Scotland	-13%	-11%	-2%	0%	-1%
Wales	-5%	-1%	-1%	0%	-5%
UK	-5%	-2%	-0%	0%	-4%

I.1.7 Applicants by English region of domicile

Difference between cycle and 2016 cycle



I.1.8 Applicants by English region of domicile

English region	2013	2014	2015	2016	2017
North East	19,760	19,840	19,860	19,060	18,470
North West	60,410	62,420	61,820	60,440	57,050
Yorkshire and The Humber	40,720	41,970	42,180	41,420	39,840
East Midlands	33,930	34,810	34,110	34,700	33,220
West Midlands	46,840	48,560	49,180	48,310	45,180
East of England	45,070	46,100	46,580	46,730	45,000
London	85,700	90,110	92,310	93,400	88,570
South East	69,230	71,600	72,560	73,430	70,430
South West	40,130	41,530	42,150	41,940	40,100

I.1.9 Applicants by English region of domicile

Difference between cycle and 2016 cycle

English region	2013	2014	2015	2016	2017
North East	4%	4%	4%	0%	-3%
North West	-0%	3%	2%	0%	-6%
Yorkshire and The Humber	-2%	1%	2%	0%	-4%
East Midlands	-2%	0%	-2%	0%	-4%
West Midlands	-3%	1%	2%	0%	-6%
East of England	-4%	-1%	-0%	0%	-4%
London	-8%	-4%	-1%	0%	-5%
South East	-6%	-2%	-1%	0%	-4%
South West	-4%	-1%	1%	0%	-4%

I.1.10 Applicants by declared country of domicile

Selected countries

Declared country of domicile	2013	2014	2015	2016	2017
Albania	70	80	90	110	80
Angola	90	110	210	170	80
Australia	540	570	590	570	590
Austria	570	590	620	640	580
Azerbaijan	290	380	300	170	140
Bahrain	380	380	350	360	430
Bangladesh	290	320	340	250	290
Barbados	80	90	110	70	100
Belgium	940	1,010	1,080	1,110	1,080
Bermuda	190	200	210	210	180
Botswana	110	120	170	160	160
Brazil	230	260	290	290	260
Brunei	730	840	540	440	370
Bulgaria	2,540	2,290	2,280	2,490	2,240
Burma (Myanmar)	60	80	90	130	90
Canada	2,330	2,270	2,390	2,270	2,230
Cayman Islands	110	120	100	120	120
China	10,690	10,730	11,540	12,450	13,390
Croatia	70	150	270	360	330
Cyprus (European Union)	3,300	3,280	3,220	3,060	3,230
Czech Republic	470	600	850	1,100	1,090
Denmark	460	450	480	500	540
Ecuador	50	100	80	160	140
Egypt	480	610	710	850	810
Estonia	610	520	500	460	400
Finland	820	920	1,010	1,000	860
France	3,850	4,370	4,910	5,220	5,110
Germany	3,150	3,150	3,300	3,570	3,230
Ghana	260	270	290	280	340
Gibraltar	310	300	290	290	290
Greece	2,420	2,360	2,320	2,370	2,340
Guernsey	300	300	320	330	260
Hong Kong	6,170	6,570	6,210	6,100	5,960
Hungary	770	770	830	930	910
India	3,790	3,990	4,130	4,280	4,790
Indonesia	480	510	570	610	640
Iran	270	260	230	250	330
Ireland	5,940	5,710	5,680	5,180	4,360
Isle of Man	490	500	460	490	500
Israel	140	110	130	140	110
Italy	3,150	3,990	4,660	4,920	4,420
Japan	490	540	490	450	450
Jersey	530	500	520	560	570
Jordan	410	410	420	410	480
Kazakhstan	360	370	360	310	250
Kenya	650	690	750	710	680
Korea (South)	1,390	1,380	1,520	1,590	1,560
Kuwait	450	480	540	560	700

Declared country of domicile	2013	2014	2015	2016	2017
Latvia	590	550	520	580	580
Lebanon	200	250	260	340	330
Libyan AR	90	130	110	100	30
Lithuania	2,110	1,910	1,820	1,890	2,030
Luxembourg	420	460	440	430	440
Macao	140	180	260	220	280
Malaysia	4,820	6,180	6,530	5,530	4,670
Malta	120	100	100	120	100
Mauritius	390	500	400	410	370
Mexico	160	150	170	210	170
Morocco	260	320	360	330	350
Nepal	120	100	80	80	80
Netherlands	800	820	890	930	940
New Zealand	150	170	180	200	190
Nigeria	2,280	2,150	1,990	1,670	1,560
Norway	2,150	2,180	2,080	1,520	1,570
Oman	250	330	340	320	360
Pakistan	1,760	1,750	1,810	1,840	2,000
Philippines	120	130	170	140	150
Poland	2,180	2,550	2,960	3,750	3,710
Portugal	860	930	1,200	1,430	1,740
Qatar	510	460	470	550	490
Romania	2,550	2,730	3,430	3,580	3,050
Russia	970	1,190	1,300	1,040	920
Saudi Arabia	1,020	980	1,060	1,010	940
Serbia	130	110	100	130	120
Singapore	4,090	4,290	4,130	3,630	3,460
Slovakia	500	600	590	820	680
Slovenia	130	160	160	160	160
South Africa	310	330	420	470	720
Spain	2,080	2,470	2,910	3,410	3,460
Sri Lanka	330	300	250	230	300
Sweden	1,580	1,560	1,490	1,400	1,240
Switzerland	1,120	1,130	1,280	1,300	1,270
Taiwan	310	330	370	340	430
Tanzania	190	200	170	160	140
Thailand	700	820	830	820	820
Trinidad and Tobago	170	170	200	200	180
Turkey	560	600	610	790	1,000
Uganda	200	140	170	160	180
Ukraine	300	320	280	240	230
United Arab Emirates	1,090	1,300	1,420	1,520	1,980
United States of America	3,450	3,770	3,800	4,040	4,400
Vietnam	660	580	470	390	410
Zambia	170	150	160	160	150
Zimbabwe	360	460	420	450	470

I.1.11 Applicants by declared country of domicile

Selected countries, difference between cycle and 2016 cycle

Declared country of domicile	2013	2014	2015	2016	2017
Albania	-35%	-27%	-22%	0%	-33%
Angola	-45%	-36%	22%	0%	-54%
Australia	-6%	-1%	2%	0%	2%
Austria	-12%	-8%	-3%	0%	-10%
Azerbaijan	67%	122%	75%	0%	-19%
Bahrain	5%	4%	-5%	0%	20%
Bangladesh	17%	28%	34%	0%	14%
Barbados	11%	21%	51%	0%	35%
Belgium	-15%	-9%	-3%	0%	-3%
Bermuda	-7%	-3%	-2%	0%	-12%
Botswana	-35%	-27%	2%	0%	-2%
Brazil	-23%	-12%	-3%	0%	-12%
Brunei	67%	94%	24%	0%	-15%
Bulgaria	2%	-8%	-8%	0%	-10%
Burma (Myanmar)	-50%	-36%	-28%	0%	-30%
Canada	2%	0%	5%	0%	-2%
Cayman Islands	-9%	4%	-15%	0%	6%
China	-14%	-14%	-7%	0%	8%
Croatia	-81%	-57%	-25%	0%	-10%
Cyprus (European Union)	8%	7%	5%	0%	6%
Czech Republic	-57%	-45%	-23%	0%	-1%
Denmark	-9%	-11%	-5%	0%	8%
Ecuador	-69%	-39%	-52%	0%	-11%
Egypt	-44%	-28%	-16%	0%	-4%
Estonia	31%	11%	9%	0%	-14%
Finland	-18%	-8%	1%	0%	-14%
France	-26%	-16%	-6%	0%	-2%
Germany	-12%	-12%	-8%	0%	-10%
Ghana	-10%	-6%	1%	0%	20%
Gibraltar	4%	0%	-1%	0%	-3%
Greece	2%	-0%	-2%	0%	-1%
Guernsey	-9%	-9%	-4%	0%	-21%
Hong Kong	1%	8%	2%	0%	-2%
Hungary	-17%	-18%	-11%	0%	-3%
India	-12%	-7%	-4%	0%	12%
Indonesia	-21%	-17%	-6%	0%	6%
Iran	5%	2%	-9%	0%	30%
Ireland	15%	10%	10%	0%	-16%
Isle of Man	-1%	1%	-7%	0%	1%
Israel	1%	-22%	-9%	0%	-22%
Italy	-36%	-19%	-5%	0%	-10%
Japan	9%	19%	9%	0%	-1%
Jersey	-5%	-11%	-7%	0%	1%
Jordan	0%	1%	2%	0%	17%
Kazakhstan	18%	20%	16%	0%	-18%
Kenya	-8%	-2%	6%	0%	-4%
Korea (South)	-12%	-13%	-4%	0%	-2%
Kuwait	-20%	-15%	-4%	0%	26%

Declared country of domicile	2013	2014	2015	2016	2017
Latvia	3%	-4%	-9%	0%	1%
Lebanon	-42%	-27%	-25%	0%	-5%
Libyan AR	-10%	29%	8%	0%	-68%
Lithuania	11%	1%	-4%	0%	7%
Luxembourg	-3%	6%	1%	0%	1%
Macao	-36%	-18%	17%	0%	26%
Malaysia	-13%	12%	18%	0%	-15%
Malta	-5%	-19%	-15%	0%	-15%
Mauritius	-4%	22%	-1%	0%	-10%
Mexico	-24%	-25%	-17%	0%	-16%
Morocco	-22%	-2%	10%	0%	7%
Nepal	59%	29%	3%	0%	0%
Netherlands	-13%	-12%	-4%	0%	1%
New Zealand	-24%	-16%	-11%	0%	-8%
Nigeria	37%	29%	20%	0%	-6%
Norway	42%	44%	37%	0%	3%
Oman	-20%	6%	9%	0%	13%
Pakistan	-4%	-5%	-1%	0%	9%
Philippines	-14%	-7%	20%	0%	5%
Poland	-42%	-32%	-21%	0%	-1%
Portugal	-40%	-35%	-16%	0%	22%
Qatar	-7%	-15%	-14%	0%	-10%
Romania	-29%	-24%	-4%	0%	-15%
Russia	-7%	14%	24%	0%	-12%
Saudi Arabia	1%	-3%	5%	0%	-6%
Serbia	4%	-10%	-24%	0%	-6%
Singapore	13%	18%	14%	0%	-5%
Slovakia	-39%	-27%	-28%	0%	-17%
Slovenia	-16%	0%	3%	0%	1%
South Africa	-34%	-29%	-11%	0%	52%
Spain	-39%	-28%	-15%	0%	1%
Sri Lanka	41%	31%	7%	0%	29%
Sweden	13%	12%	6%	0%	-11%
Switzerland	-14%	-13%	-2%	0%	-2%
Taiwan	-10%	-3%	8%	0%	26%
Tanzania	22%	28%	6%	0%	-9%
Thailand	-15%	0%	1%	0%	0%
Trinidad and Tobago	-15%	-17%	1%	0%	-10%
Turkey	-28%	-23%	-23%	0%	27%
Uganda	22%	-16%	2%	0%	10%
Ukraine	23%	33%	14%	0%	-4%
United Arab Emirates	-29%	-15%	-7%	0%	30%
United States of America	-15%	-7%	-6%	0%	9%
Vietnam	68%	47%	20%	0%	3%
Zambia	6%	-6%	1%	0%	-3%
Zimbabwe	-20%	2%	-7%	0%	4%

I.1.12 Technical notes and definitions

Applicants have been able to submit applications for all 2017 courses since early September.

People who submit their applications to UCAS by the January deadline are considered 'on time' applicants for the large majority of courses offered through UCAS. Some art and design courses have a later deadline of 24 March. By definition all main scheme applications have been received by the 30 June deadline.

Counts of the number of applicants reported have been rounded to the nearest 10 applicants, this may result in instances where totals do not equal the sum of the components. Proportional changes have been rounded to the nearest whole percentage point.

Age

This statistical release uses country-specific age definitions which align with the cut off points for school/college cohorts within the different administrations of the UK. For England and Wales ages are defined on the 31 August, for Northern Ireland on the 1 July and for Scotland on the 28 February the following year. Defining ages in this way matches the assignment of children to school cohorts. For applicants outside of the UK the cohort cut off for England and Wales has been used.

Applicant

A person who has made an application in the UCAS system during the cycle reported (including applications for deferred entry). Records of prior acceptance (RPAs) are excluded.

Application

An application to a course at a provider made by an applicant in the UCAS main scheme. Applicants may make up to five main scheme applications.

Country of provider

An applicant may be counted once for each provider country they have applied to in the main scheme. If an applicant has applied to providers in multiple countries then the applicant is counted once within each country of provider applied to.

This statistical release excludes a small number of applications to a provider based in the EU.

Domicile

Declared area of permanent residence. The Channel Islands and the Isle of Man have been assigned as 'Not EU'.

First time applicant

An applicant that did not apply to the UCAS scheme in the previous cycle.

Main scheme

The main UCAS application scheme through which up to five providers/courses can be applied to. This opens in September and closes to new applications on 30 June the following year.

Reapplicant

An applicant that applied to the UCAS scheme in the previous cycle.

Subject group

The JACS3 classification used to classify courses into subject groups.

Tariff group of provider

Providers are grouped as higher, medium or lower tariff based on their average levels of attainment of their accepted applicants (summarised through UCAS Tariff points) in recent cycles. Each group of providers accounted for around a third of all UK 18 year old acceptances in recent cycles.