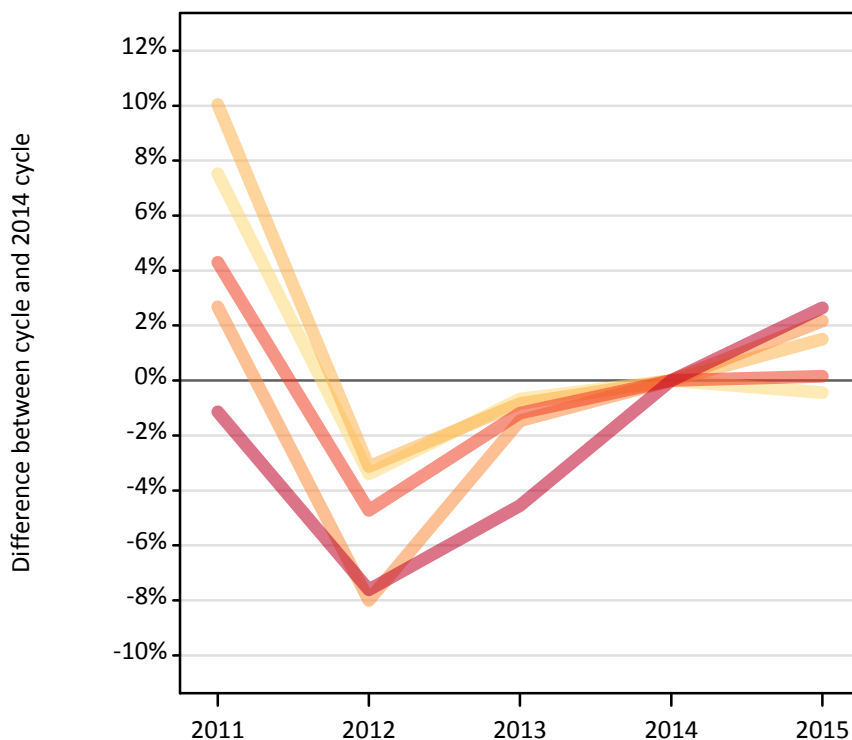
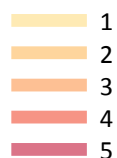


Applicants by number of applications at the 15 January deadline

D.4.1 Applicants by domicile and number of applications made : All domiciles

Difference between cycle and 2014 cycle



D.4.2 Applicants by domicile and number of applications made : All domiciles

Domicile and number of applications made by applicant		2011	2012	2013	2014	2015
All domiciles	1	44,970	40,410	41,550	41,830	41,640
	2	23,450	20,640	21,130	21,310	21,630
	3	31,210	27,960	29,950	30,390	31,050
	4	57,020	52,090	54,020	54,670	54,750
	5	426,880	398,930	412,170	431,810	443,210
	All	583,530	540,020	558,820	580,000	592,290

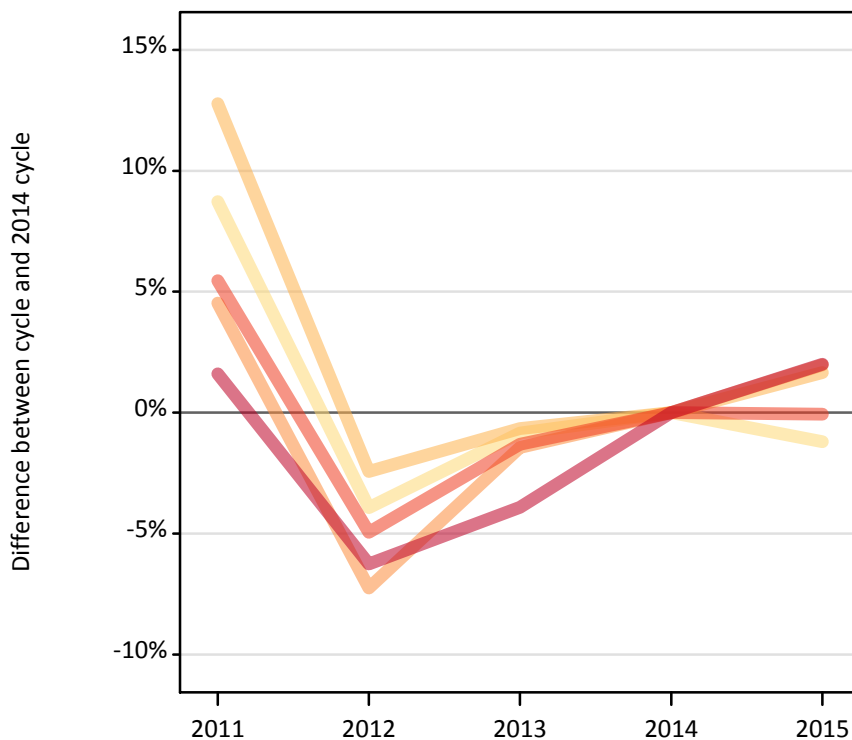
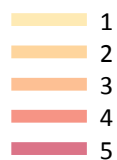
D.4.3 Applicants by domicile and number of applications made : All domiciles

Difference between cycle and 2014 cycle

Domicile and number of applications made by applicant		2011	2012	2013	2014	2015
All domiciles	1	8%	-3%	-1%	0%	-0%
	2	10%	-3%	-1%	0%	2%
	3	3%	-8%	-1%	0%	2%
	4	4%	-5%	-1%	0%	0%
	5	-1%	-8%	-5%	0%	3%
	All	1%	-7%	-4%	0%	2%

D.4.4 Applicants by domicile and number of applications made : UK

Difference between cycle and 2014 cycle



D.4.5 Applicants by domicile and number of applications made : UK

Domicile and number of applications made by applicant		2011	2012	2013	2014	2015
UK	1	38,520	34,030	35,130	35,430	35,000
	2	20,770	17,970	18,300	18,420	18,720
	3	27,480	24,380	25,910	26,290	26,810
	4	49,960	45,040	46,760	47,380	47,350
	5	368,250	339,760	348,220	362,420	369,670
	All	504,980	461,180	474,310	489,940	497,550

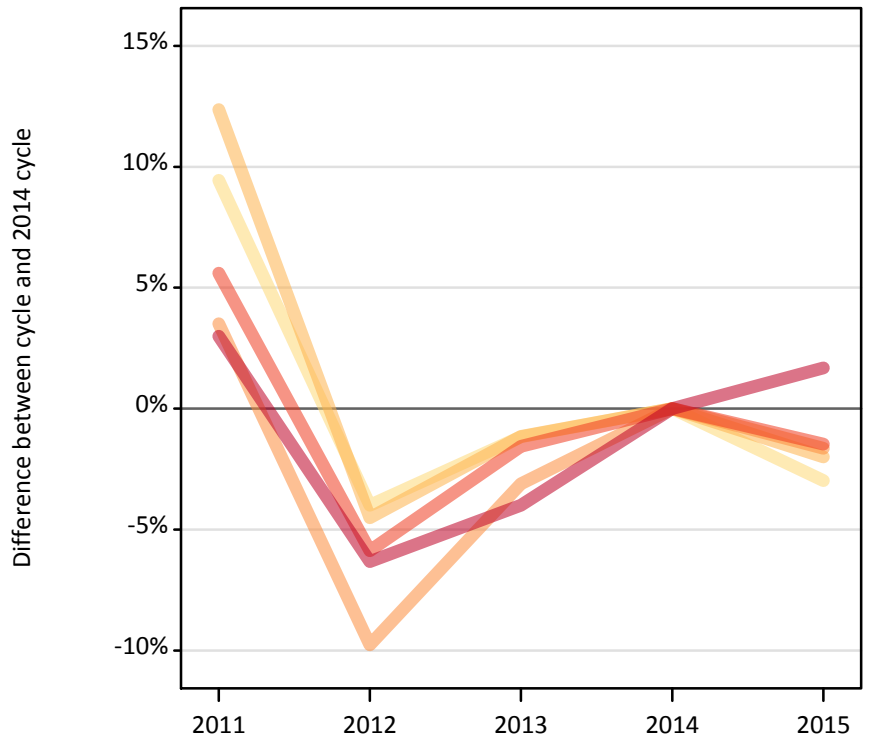
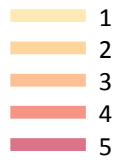
D.4.6 Applicants by domicile and number of applications made : UK

Difference between cycle and 2014 cycle

Domicile and number of applications made by applicant		2011	2012	2013	2014	2015
UK	1	9%	-4%	-1%	0%	-1%
	2	13%	-2%	-1%	0%	2%
	3	5%	-7%	-1%	0%	2%
	4	5%	-5%	-1%	0%	-0%
	5	2%	-6%	-4%	0%	2%
	All	3%	-6%	-3%	0%	2%

D.4.7 Applicants by domicile and number of applications made : England

Difference between cycle and 2014 cycle



D.4.8 Applicants by domicile and number of applications made : England

Domicile and number of applications made by applicant		2011	2012	2013	2014	2015
England	1	31,180	27,350	28,160	28,490	27,640
	2	15,880	13,490	13,970	14,130	13,850
	3	21,280	18,550	19,920	20,560	20,220
	4	40,560	36,150	37,810	38,410	37,850
	5	315,910	287,300	294,480	306,710	311,870
	All	424,800	382,840	394,330	408,300	411,420

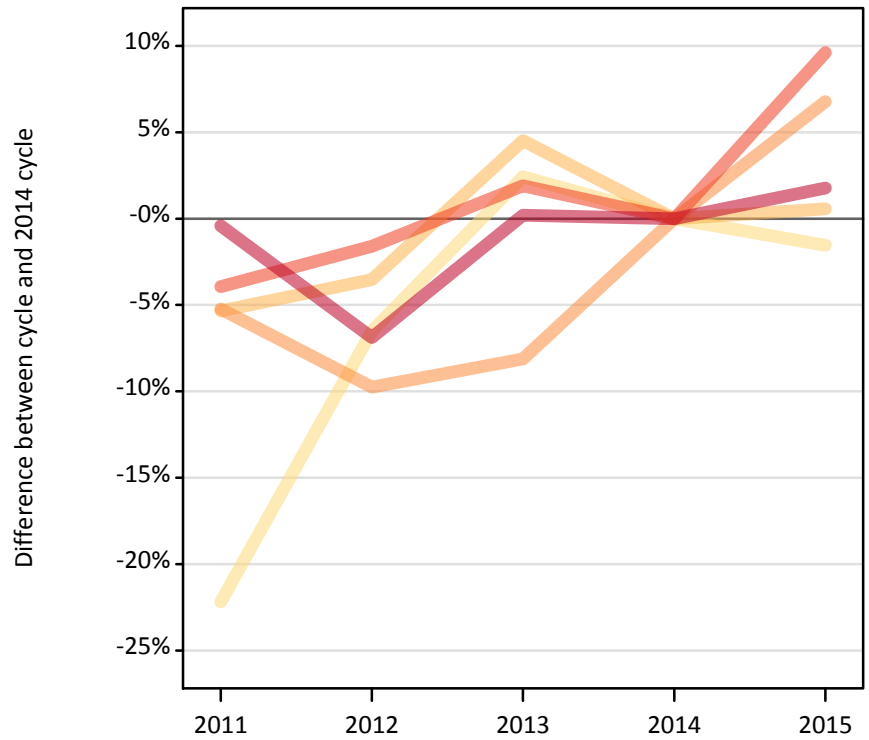
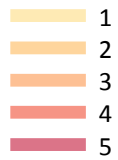
D.4.9 Applicants by domicile and number of applications made : England

Difference between cycle and 2014 cycle

Domicile and number of applications made by applicant		2011	2012	2013	2014	2015
England	1	9%	-4%	-1%	0%	-3%
	2	12%	-5%	-1%	0%	-2%
	3	4%	-10%	-3%	0%	-2%
	4	6%	-6%	-2%	0%	-1%
	5	3%	-6%	-4%	0%	2%
	All	4%	-6%	-3%	0%	1%

D.4.10 Applicants by domicile and number of applications made : Northern Ireland

Difference between cycle and 2014 cycle



D.4.11 Applicants by domicile and number of applications made : Northern Ireland

Domicile and number of applications made by applicant		2011	2012	2013	2014	2015
Northern Ireland	1	710	850	930	910	890
	2	670	690	740	710	710
	3	920	880	890	970	1,040
	4	1,610	1,650	1,710	1,680	1,840
	5	15,220	14,230	15,310	15,280	15,550
	All	19,130	18,290	19,590	19,550	20,040

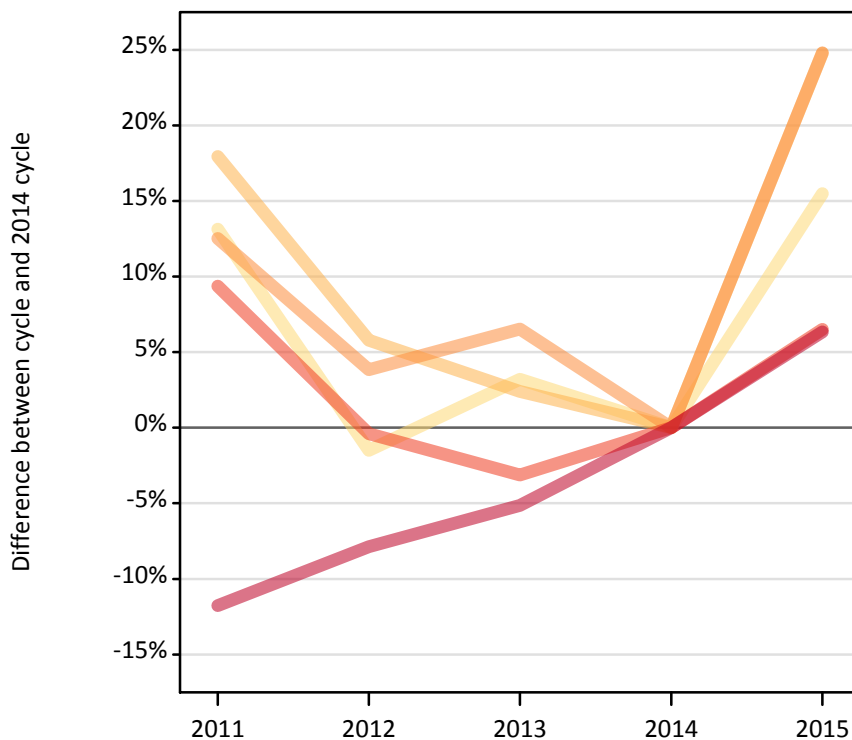
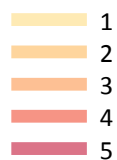
D.4.12 Applicants by domicile and number of applications made : Northern Ireland

Difference between cycle and 2014 cycle

Domicile and number of applications made by applicant		2011	2012	2013	2014	2015
Northern Ireland	1	-22%	-7%	2%	0%	-2%
	2	-5%	-4%	5%	0%	1%
	3	-5%	-10%	-8%	0%	7%
	4	-4%	-2%	2%	0%	10%
	5	-0%	-7%	0%	0%	2%
	All	-2%	-6%	0%	0%	2%

D.4.13 Applicants by domicile and number of applications made : Scotland

Difference between cycle and 2014 cycle



D.4.14 Applicants by domicile and number of applications made : Scotland

Domicile and number of applications made by applicant		2011	2012	2013	2014	2015
Scotland	1	4,570	3,980	4,170	4,040	4,660
	2	2,900	2,600	2,520	2,460	3,070
	3	3,570	3,290	3,380	3,170	3,960
	4	5,230	4,770	4,630	4,780	5,100
	5	23,500	24,540	25,260	26,630	28,320
	All	39,760	39,170	39,950	41,080	45,100

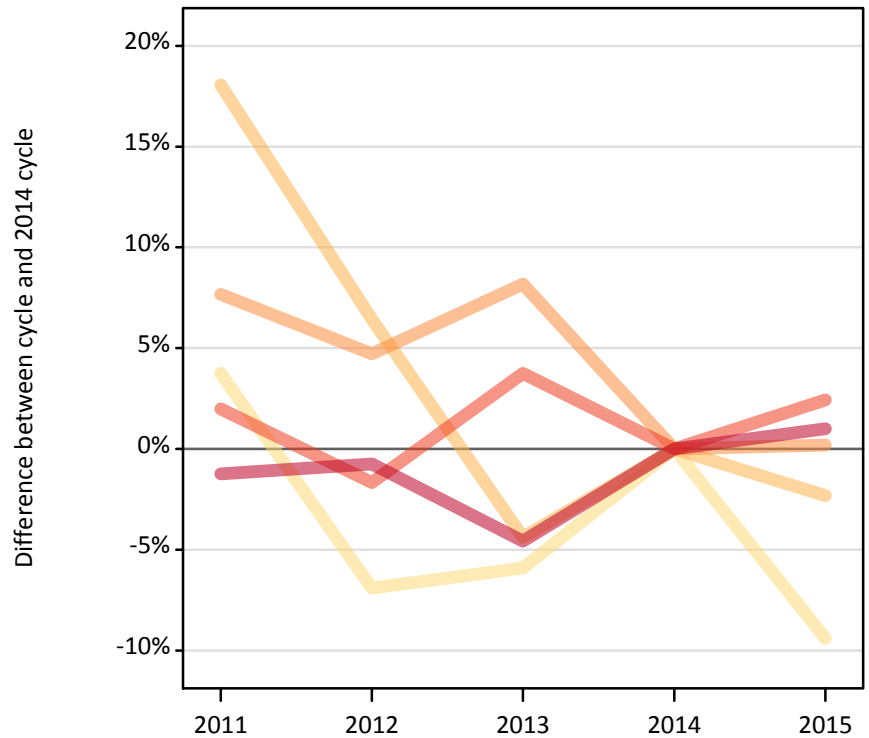
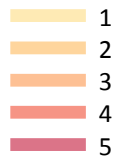
D.4.15 Applicants by domicile and number of applications made : Scotland

Difference between cycle and 2014 cycle

Domicile and number of applications made by applicant		2011	2012	2013	2014	2015
Scotland	1	13%	-1%	3%	0%	15%
	2	18%	6%	2%	0%	25%
	3	13%	4%	7%	0%	25%
	4	9%	-0%	-3%	0%	7%
	5	-12%	-8%	-5%	0%	6%
	All	-3%	-5%	-3%	0%	10%

D.4.16 Applicants by domicile and number of applications made : Wales

Difference between cycle and 2014 cycle



D.4.17 Applicants by domicile and number of applications made : Wales

Domicile and number of applications made by applicant		2011	2012	2013	2014	2015
Wales	1	2,070	1,860	1,880	2,000	1,810
	2	1,320	1,190	1,070	1,120	1,090
	3	1,710	1,660	1,720	1,590	1,590
	4	2,560	2,470	2,600	2,510	2,570
	5	13,630	13,700	13,170	13,800	13,940
	All	21,290	20,880	20,440	21,010	21,000

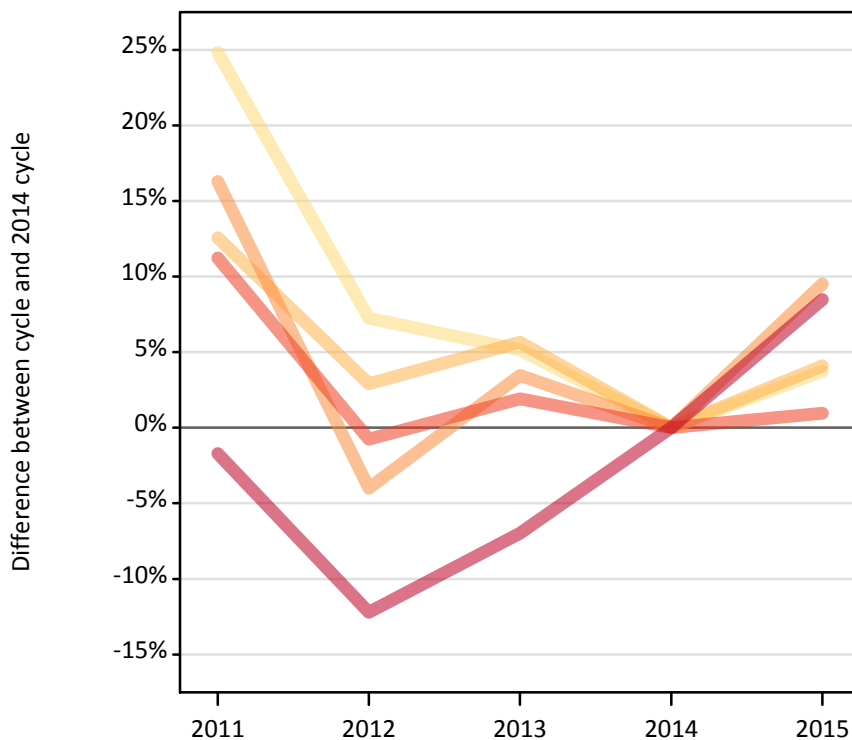
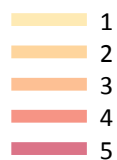
D.4.18 Applicants by domicile and number of applications made : Wales

Difference between cycle and 2014 cycle

Domicile and number of applications made by applicant		2011	2012	2013	2014	2015
Wales	1	4%	-7%	-6%	0%	-9%
	2	18%	6%	-4%	0%	-2%
	3	8%	5%	8%	0%	0%
	4	2%	-2%	4%	0%	2%
	5	-1%	-1%	-5%	0%	1%
	All	1%	-1%	-3%	0%	-0%

D.4.19 Applicants by domicile and number of applications made : EU (excluding UK)

Difference between cycle and 2014 cycle



D.4.20 Applicants by domicile and number of applications made : EU (excluding UK)

Domicile and number of applications made by applicant		2011	2012	2013	2014	2015
EU (excluding UK)	1	3,650	3,140	3,080	2,930	3,030
	2	1,510	1,380	1,420	1,340	1,400
	3	1,920	1,590	1,710	1,650	1,810
	4	3,660	3,270	3,360	3,290	3,330
	5	30,040	26,830	28,430	30,560	33,150
	All	40,790	36,210	37,990	39,780	42,720

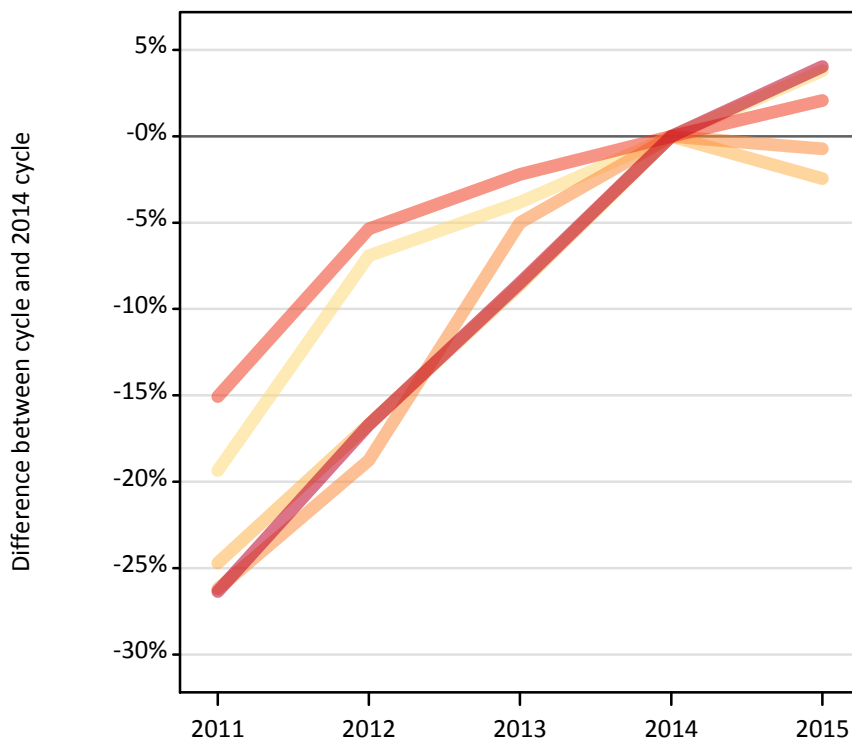
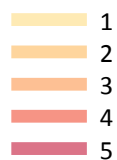
D.4.21 Applicants by domicile and number of applications made : EU (excluding UK)

Difference between cycle and 2014 cycle

Domicile and number of applications made by applicant		2011	2012	2013	2014	2015
EU (excluding UK)	1	25%	7%	5%	0%	4%
	2	13%	3%	6%	0%	4%
	3	16%	-4%	3%	0%	10%
	4	11%	-1%	2%	0%	1%
	5	-2%	-12%	-7%	0%	8%
	All	3%	-9%	-4%	0%	7%

D.4.22 Applicants by domicile and number of applications made : Not EU

Difference between cycle and 2014 cycle



D.4.23 Applicants by domicile and number of applications made : Not EU

Domicile and number of applications made by applicant		2011	2012	2013	2014	2015
Not EU	1	2,800	3,230	3,340	3,470	3,610
	2	1,160	1,290	1,410	1,550	1,510
	3	1,810	1,990	2,330	2,450	2,440
	4	3,390	3,780	3,910	4,000	4,080
	5	28,590	32,340	35,520	38,820	40,390
	All	37,760	42,640	46,510	50,290	52,020

D.4.24 Applicants by domicile and number of applications made : Not EU

Difference between cycle and 2014 cycle

Domicile and number of applications made by applicant		2011	2012	2013	2014	2015
Not EU	1	-19%	-7%	-4%	0%	4%
	2	-25%	-17%	-9%	0%	-2%
	3	-26%	-19%	-5%	0%	-1%
	4	-15%	-5%	-2%	0%	2%
	5	-26%	-17%	-9%	0%	4%
	All	-25%	-15%	-8%	0%	3%

D.4.25 Technical notes and definitions

Applicants have been able to submit applications for all 2015 courses since early September.

Applicants who submit their applications to UCAS by the January deadline are considered as 'on time' applicants for the large majority of courses offered through UCAS.

In 2015, around 125 courses relating to teacher training that historically would only have been available through UCAS Teacher Training, and therefore not previously counted in the scope of this statistical release, were brought into the undergraduate UCAS scheme. These courses are all offered by providers based in Scotland and are in the JACS3 detailed subject reporting grouping of 'X1'. The large majority of applications to these courses are from applicants living in Scotland.

To help comparisons through time, additional tables are available on the UCAS website that exclude any applications made by applicants to subject group 'X1' at Scottish providers. These tables provide a better 'like for like' comparison particularly when considering Scottish domiciled applicants and Scottish providers.

Counts of the number of applicants reported have been rounded to the nearest 10 applicants, this may result in instances where totals do not equal the sum of the components. Proportional changes have been rounded to the nearest whole percentage point.

Age

This statistical release uses country-specific age definitions which align with the cut off points for school/college cohorts within the different administrations of the UK. For England and Wales ages are defined on the 31 August, for Northern Ireland on the 1 July and for Scotland on the 28 February the following year. Defining ages in this way matches the assignment of children to school cohorts. For applicants outside of the UK the cohort cut off for England and Wales has been used.

Applicant

A person who has made an application in the UCAS system during the cycle reported, this includes those who submit applications for deferred entry.

Application

An application to a course at an institution made by an applicant. Applicants may make up to five applications.

Country of institution

The UK country of the institution applied to.

Domicile

Declared area of permanent residence. The Channel Islands and the Isle of Man have been assigned as 'Not EU'.

First time applicant

An applicant that did not apply to the UCAS scheme in the previous cycle.

Reapplicant

An applicant that applied to the UCAS scheme in the previous cycle.

Subject group

The JACS3 classification used to classify courses into subject groups.

Tariff group of institution

Institutions are grouped as higher, medium or lower tariff based on their average levels of attainment of their accepted applicants (summarised through UCAS Tariff points) in recent cycles. Each group of institutions accounted for around a third of all UK 18 year old acceptances in recent cycles.