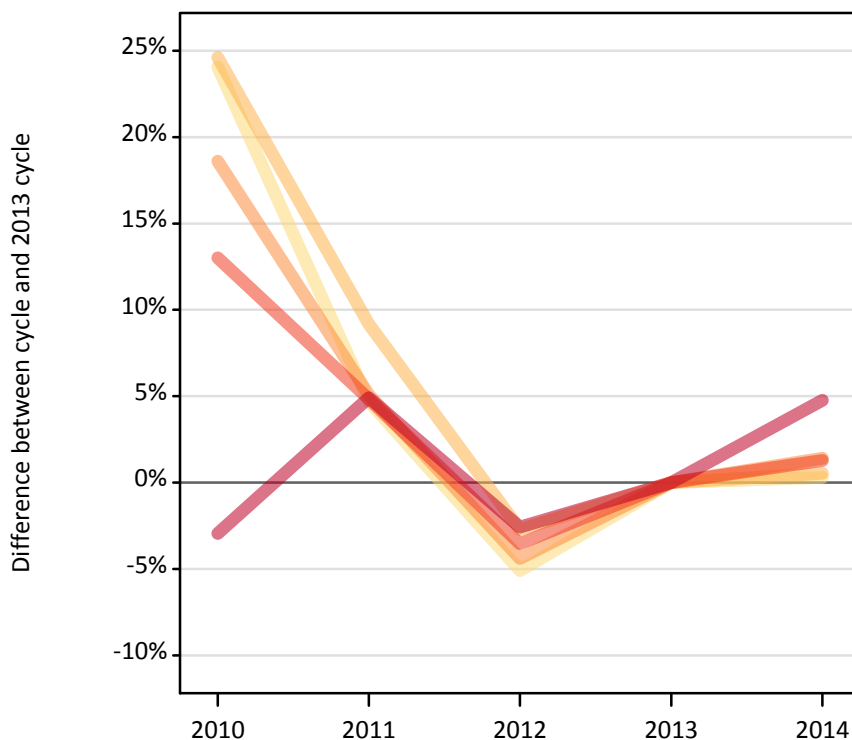
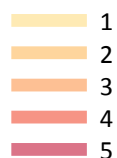


Applicants by number of applications at the 30 June deadline

I.4.1 Applicants by domicile and number of applications made : All domiciles

Difference between cycle and 2013 cycle



I.4.2 Applicants by domicile and number of applications made : All domiciles

Domicile and number of applications made by applicant		2010	2011	2012	2013	2014
All domiciles	1	82,360	69,510	63,000	66,390	66,590
	2	32,220	28,230	25,150	25,850	25,990
	3	39,890	35,340	32,150	33,630	34,100
	4	64,180	59,530	54,790	56,790	57,520
	5	439,920	475,540	441,610	453,240	474,830
	All	658,560	668,150	616,700	635,910	659,030

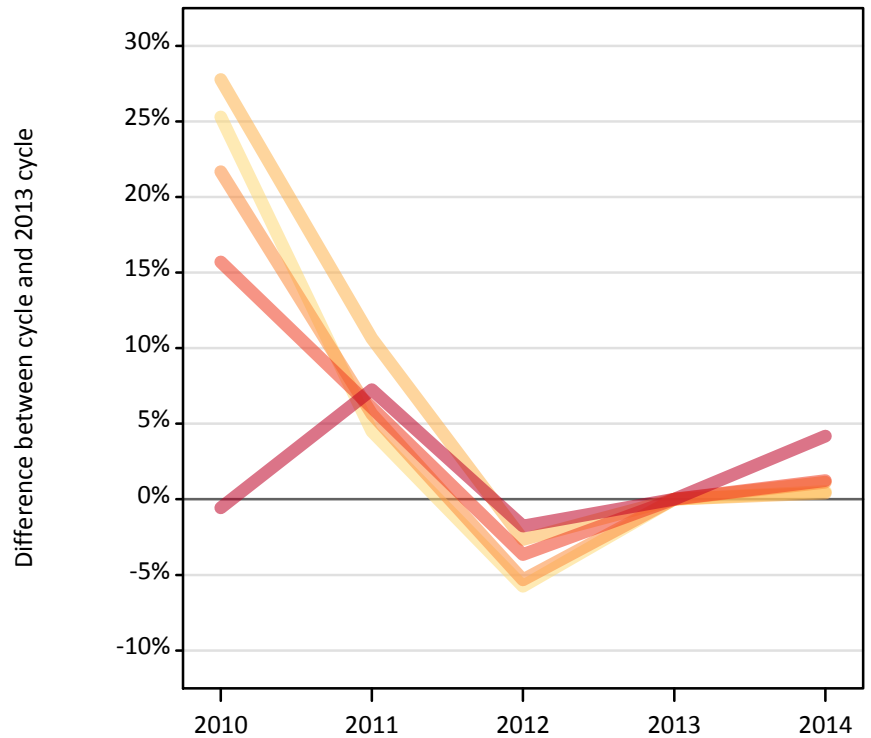
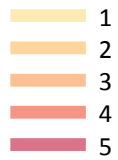
I.4.3 Applicants by domicile and number of applications made : All domiciles

Difference between cycle and 2013 cycle

Domicile and number of applications made by applicant		2010	2011	2012	2013	2014
All domiciles	1	24%	5%	-5%	0%	0%
	2	25%	9%	-3%	0%	1%
	3	19%	5%	-4%	0%	1%
	4	13%	5%	-4%	0%	1%
	5	-3%	5%	-3%	0%	5%
	All	4%	5%	-3%	0%	4%

I.4.4 Applicants by domicile and number of applications made : UK

Difference between cycle and 2013 cycle



I.4.5 Applicants by domicile and number of applications made : UK

Domicile and number of applications made by applicant		2010	2011	2012	2013	2014
UK	1	70,430	58,740	52,980	56,210	56,510
	2	28,030	24,270	21,360	21,940	22,030
	3	34,250	29,740	26,650	28,150	28,470
	4	55,770	51,130	46,440	48,200	48,800
	5	371,080	400,240	366,550	373,170	388,780
	All	559,570	564,120	513,970	527,670	544,580

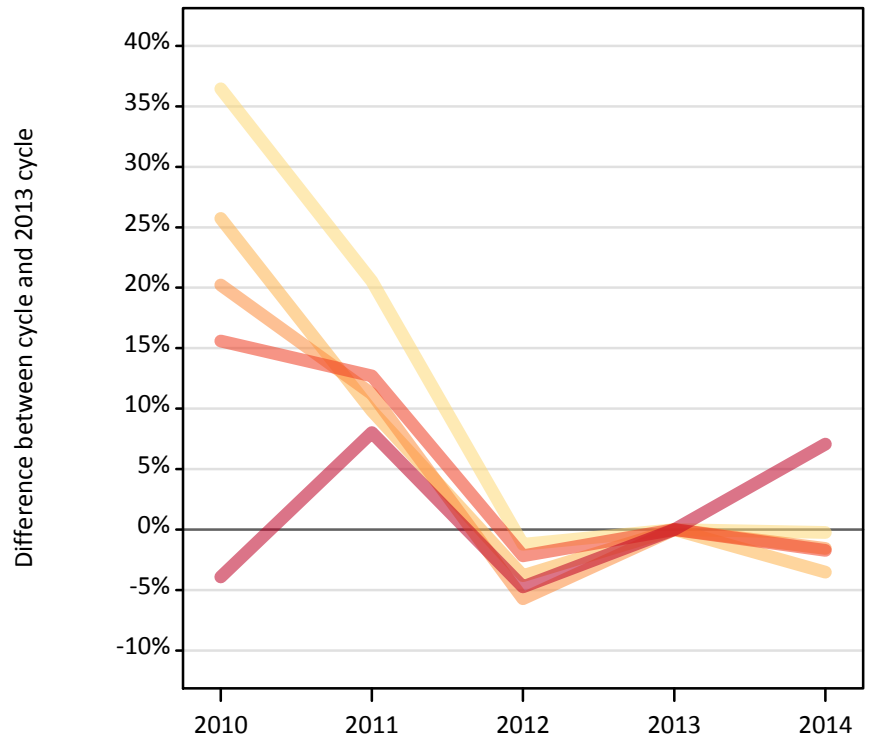
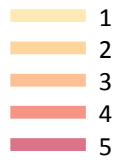
I.4.6 Applicants by domicile and number of applications made : UK

Difference between cycle and 2013 cycle

Domicile and number of applications made by applicant		2010	2011	2012	2013	2014
UK	1	25%	4%	-6%	0%	1%
	2	28%	11%	-3%	0%	0%
	3	22%	6%	-5%	0%	1%
	4	16%	6%	-4%	0%	1%
	5	-1%	7%	-2%	0%	4%
	All	6%	7%	-3%	0%	3%

I.4.7 Applicants by domicile and number of applications made : EU (excluding UK)

Difference between cycle and 2013 cycle



I.4.8 Applicants by domicile and number of applications made : EU (excluding UK)

Domicile and number of applications made by applicant		2010	2011	2012	2013	2014
EU (excluding UK)	1	5,800	5,130	4,200	4,250	4,240
	2	2,140	1,870	1,630	1,700	1,640
	3	2,310	2,140	1,810	1,920	1,890
	4	4,090	3,990	3,460	3,540	3,480
	5	30,640	34,440	30,370	31,880	34,130
	All	44,980	47,560	41,480	43,290	45,380

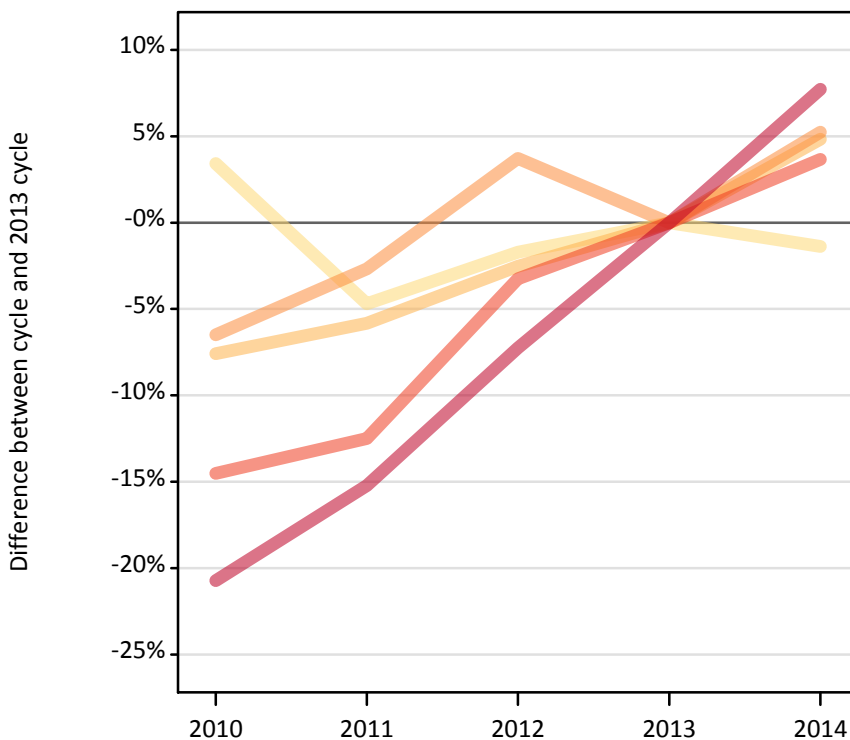
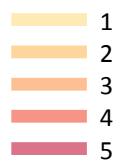
I.4.9 Applicants by domicile and number of applications made : EU (excluding UK)

Difference between cycle and 2013 cycle

Domicile and number of applications made by applicant		2010	2011	2012	2013	2014
EU (excluding UK)	1	36%	21%	-1%	0%	-0%
	2	26%	10%	-4%	0%	-4%
	3	20%	11%	-6%	0%	-2%
	4	16%	13%	-2%	0%	-2%
	5	-4%	8%	-5%	0%	7%
	All	4%	10%	-4%	0%	5%

I.4.10 Applicants by domicile and number of applications made : Not EU

Difference between cycle and 2013 cycle



I.4.11 Applicants by domicile and number of applications made : Not EU

Domicile and number of applications made by applicant		2010	2011	2012	2013	2014
Not EU	1	6,130	5,650	5,820	5,920	5,840
	2	2,050	2,090	2,160	2,220	2,320
	3	3,320	3,460	3,690	3,550	3,740
	4	4,320	4,420	4,890	5,060	5,240
	5	38,200	40,860	44,700	48,190	51,920
	All	54,020	56,470	61,260	64,940	69,060

I.4.12 Applicants by domicile and number of applications made : Not EU

Difference between cycle and 2013 cycle

Domicile and number of applications made by applicant		2010	2011	2012	2013	2014
Not EU	1	3%	-5%	-2%	0%	-1%
	2	-8%	-6%	-3%	0%	5%
	3	-7%	-3%	4%	0%	5%
	4	-15%	-13%	-3%	0%	4%
	5	-21%	-15%	-7%	0%	8%
	All	-17%	-13%	-6%	0%	6%

I.4.13 Technical notes and definitions

Applicants have been able to submit applications for all 2014 courses since early September.

Counts of the number of applicants reported have been rounded to the nearest 10 applicants, this may result in instances where totals do not equal the sum of the components. Proportional changes have been rounded to the nearest whole percentage point.

The Channel Islands and the Isle of Man are assigned as 'Not EU'. The previous June statistical release assigned the Channel Islands and Isle of Man in the 'UK' therefore the figures for earlier cycles may not match the previous June statistical release.

Age

This statistical release uses country-specific age definitions which align with the cut off points for school/college cohorts within the different administrations of the UK. For England and Wales ages are defined on the 31 August, for Northern Ireland on the 1 July and for Scotland on the 28 February the following year. Defining ages in this way matches the assignment of children to school cohorts. For applicants outside of the UK the cohort cut off for England and Wales has been used.

Applicant

A person who has made an application in the UCAS system during the cycle reported, this includes those who submit applications for deferred entry.

Application

An application to a course at an institution made by an applicant. Applicants may make up to five applications.

Country of institution

The UK country of the institution applied to.

Domicile

Declared area of permanent residence. The Channel Islands and the Isle of Man have been assigned as 'Not EU'.

First time applicant

An applicant that did not apply to the UCAS scheme in the previous cycle.

Reapplicant

An applicant that applied to the UCAS scheme in the previous cycle.

Subject group

The JACS3 classification used to classify courses into subject groups.

Tariff group of institution

Institutions are grouped as higher, medium or lower tariff based on their average levels of attainment of their accepted applicants (summarised through UCAS Tariff points) in recent cycles. Each group of institutions accounted for around a third of all UK 18 year old acceptances in recent cycles.